

C.A 6255

10 A MICRO-OHMMETER



Check the quality of your connections and bonds using low-resistance measurements!

- Optimized current generator on inductive objects
- Measurement up to 2,500 Ω , resolution 0.1 $\mu\Omega$
- Automatic compensation of stray voltages
- Calculation of R at a reference temperature - Pt100 Ω probe
- Automatic discharge after test
- Programmable alarms
- Storage of up to 1,500 measurements
- Communication with a PC



With its intuitive use, the **C.A 6255 "high-performance" micro-ohmmeter** is ideal for measuring very low resistance values with **very high accuracy: 0.1 $\mu\Omega$** .



Large backlit LCD screen with double display

4 safety terminals

INTERFACE for connection to a PC

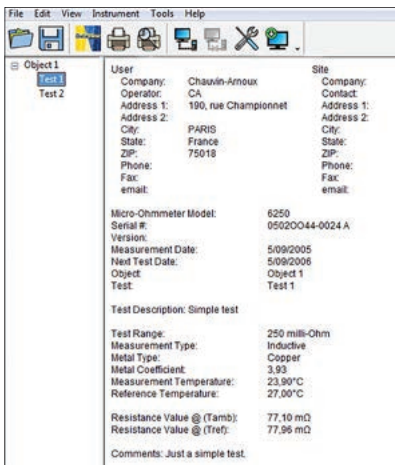
Wide measurement range with 7 calibres accessible using the rotary switch

Activation / deactivation of the temperature compensation function

Storage of up to 1,500 measurements / rereading of data

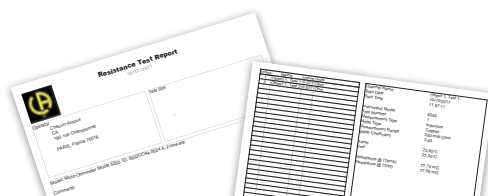
Choice of measurement mode / Selection of the metal for temperature compensation calculation

DataView® software platform for data processing



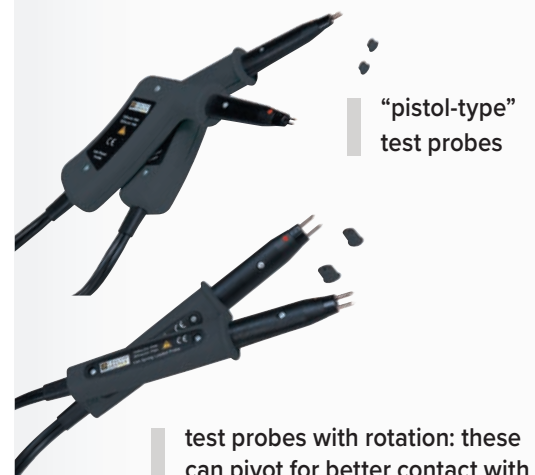
The **MOT module of DataView®** can be used to:

- Configure instruments connected to a PC
- Recover the measurement data stored in the instrument
- Back up the measurement files
- Open saved files
- Process the data and create reports
- Export the data into an Excel spreadsheet
- Export in .pdf format
- Manage the database



Kelvin 10 A clamps

Two models of retractable 10 A Kelvin test probes are available:



"pistol-type" test probes

test probes with rotation: these can pivot for better contact with the part to be measured

3 measurement modes



NON-INDUCTIVE MODE

for measurements on resistors with a time constant of a few ms (contacts, metallization, etc.)



INDUCTIVE MODE

for measurements on inductive components (transformers, motors, etc.)



NON-INDUCTIVE MODE with AUTOMATIC trigger

- for measurements on resistors without a time constant
- for repetitive measurements in production, helping to gain considerable time

Functions



TEMPERATURE COMPENSATION

The value of a resistance varies according to the temperature. For reliable supervision allowing the comparison of measurements which are comparable because they were made in the same conditions, it is a good idea always to express a measurement in terms of a given reference temperature. You can perform this calculation by simply pressing a key.



PROGRAMMABLE ALARMS

Because an audio signal is sometimes all you need to interpret and assess a measurement, it is possible to activate a high and/or low alarm. If it is overshoot, a buzzer sounds (adjustable volume).

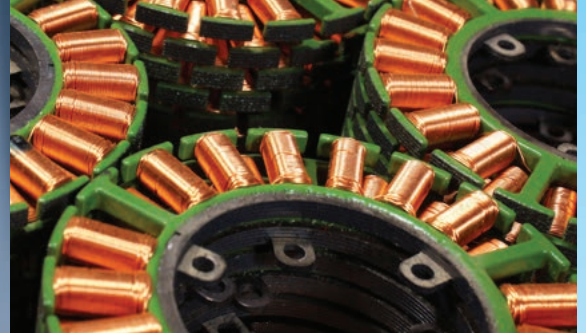


EXTENDED MEASUREMENT

The C.A 6255 is equipped with an internal memory capable of storing 1,500 measurements. They are memorized with two indices, OBJ (object) and TEST (test), which store the results in an ordered manner.

Numerous applications

- ▶ Measurements on windings (e.g. transformer) without overheating of the C.A 6255



- ▶ Surface finish and metallization
- ▶ Chassis-earth continuity/bonding test

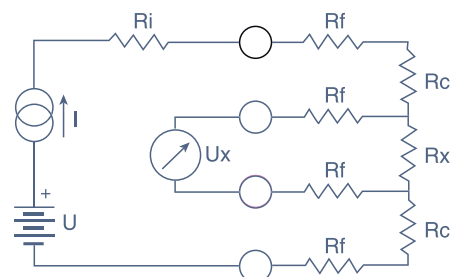


- ▶ Quality of the contacts (switches, relays)



- ▶ Resistance of cables
- ▶ Heating of motors and transformers
- ▶ Verification of mechanical linkage

4-wire Kelvin measurement method



Technical specifications

4-wire measurement method							
Calibre	5.0000 mΩ	25.000 mΩ	250.00 mΩ	2500.0 mΩ	25.000 Ω	250.00 Ω	2500.0 Ω
Resolution	0.1 μΩ	1 μΩ	10 μΩ	0.1 mΩ	1 mΩ	10 mΩ	100 mΩ
1-year accuracy	0.05 % + 1 μΩ	0.05 % + 3 μΩ	0.05 % + 30 μΩ	0.05 % + 0,3 mΩ	0.05 % + 3 mΩ	0.05 % + 30 mΩ	0.05 % + 300 mΩ
Measurement current	10 A	10 A	10 A	1 A	100 mA	10 mA	1 mA
Voltage drop	50 mV	250 mV	2,500 mV	2,500 mV	2,500 mV	2,500 mV	2,500 mV
Measurement modes	Inductive, non-inductive, non-inductive with automatic trigger						
Temperature compensation	By temperature sensor or manual						
Data storage	1,500 measurements						
Communication output	RS 232 link						
Power supply	NiMH rechargeable battery						
Dimensions / Weight	270 x 250 x 180 mm / approx. 4 kg						



Accessories

Double test probes and Kelvin clamps for micro-ohmmeters			Reference
	10 A Kelvin clamps (set of 2) • L = 3 m	Spade lug	P01101794
	Double 10 A "pistol" test probe (set of 2) • L = 3.15 m • Ø 2 mm test probes • Test-probe spacing: 3.5 mm	Spade lug and 4 mm banana	P01103065
	Double 10 A pivoting test probe (set of 2) • L = 3.15 m • Ø 3 mm test probes • Travel of probes: 10 mm	Spade lug and 4 mm banana	P01103063
	1 A Mini Kelvin clamps (set of 2)	Spade lug	P01101783
	Double 1 A test probe (set of 2) • L = 2.85 m	Spade lug and 4 mm banana	P01102056
Temperature			
	Pt 100 probe		P01102013



State at delivery

- Delivered with a bag containing:
- 1 set of cables 3 m long terminated by Kelvin clamps
 - 1 Euro mains power lead 2 m long
 - 9 user's manuals (1 per language)
 - 9 simplified user's manuals (1 per language)
 - MOT (Micro-Ohmmeter Transfer) data transfer software on CD-ROM
 - 1 x RS232 communication cable

Reference to order

C.A 6255 P01143221

FRANCE
Chauvin Arnoux
 190, rue Championnet
 75876 PARIS Cedex 18
 Tel: +33 1 44 85 44 38
 Fax: +33 1 46 27 95 59
 export@chauvin-arnoux.fr
 www.chauvin-arnoux.com

UNITED KINGDOM
Chauvin Arnoux Ltd
 Unit 1 Nelson Ct, Flagship Sq, Shaw Cross Business Pk
 Dewsbury, West Yorkshire - WF12 7TH
 Tel: +44 1924 460 494
 Fax: +44 1924 455 328
 info@chauvin-arnoux.co.uk
 www.chauvin-arnoux.com

Middle East
Chauvin Arnoux Middle East
 P.O. BOX 60-154
 1241 2020 JAL EL DIB - LEBANON
 Tel: +961 1 890 425
 Fax: +961 1 890 424
 camie@chauvin-arnoux.com
 www.chauvin-arnoux.com



X-ON Electronics

Largest Supplier of Electrical and Electronic Components

Click to view similar products for [Digital Multimeters](#) category:

Click to view products by [Chauvin Arnoux](#) manufacturer:

Other Similar products are found below :

[2727795](#) [2727486](#) [6111-517](#) [40705X](#) [3026976](#) [P 8100](#) [OW18D](#) [OW18E](#) [OW18B](#) [UT334A](#) [1833C](#) [UT611](#) [1832C](#) [BM2807CSE](#) [45218](#)
[MM200](#) [UT52](#) [FMHT82565-0](#) [UT802](#) [UT12E-EU](#) [SEFRAM7212](#) [UT8805E](#) [UT60EU](#) [BM2803CSE](#) [45215](#) [UT8804E](#) [RS3250](#)
[BM2805CSE](#) [STHT0-77364](#) [RS3251](#) [NP40 000M0](#) [NP45 100M0](#) [BK391B](#) [BK393B](#) [BK390B](#) [FLK-87VMAX-PVLEAD1](#) [1664FC](#) [SCH](#)
[FTT KIT](#) [BK394B](#) [KPS-MT720](#) [KPS-MT460](#) [KPS-MT440](#) [KPS-MT700](#) [KPS-MT480](#) [KPS-SL100](#) [KPS-MT920](#) [KPS-MT470](#) [RS3248](#)
[UT267B](#) [KPSMT490CBINT](#) [RS3252](#)