

F^{OC}CUSTM CCTTM

CLEAR CONNECTION TOOL

For Fast, Effective Fiber Connector End-Face Cleaning

- Cleans connections on backplanes and jumpers
- Uses Combination CleaningTM process (CCPTM) for first time cleaning, every time
- Effective for the widest range of contaminants
- Easy to use for quick and reliable cleaning
- Rugged and durable, great for all work sites
- Up to 800 cleanings per kit



CCT-125KIT
1.25mm for MU and LC connectors



CCT-250KIT
2.5mm for FC, SC and ST type connectors



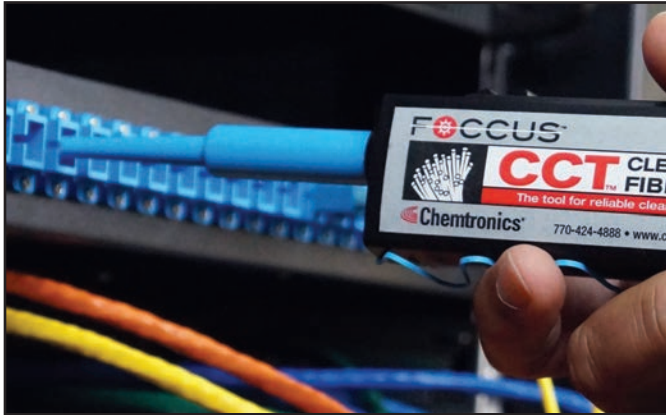
CCT-MPOKIT
For MPO connectors



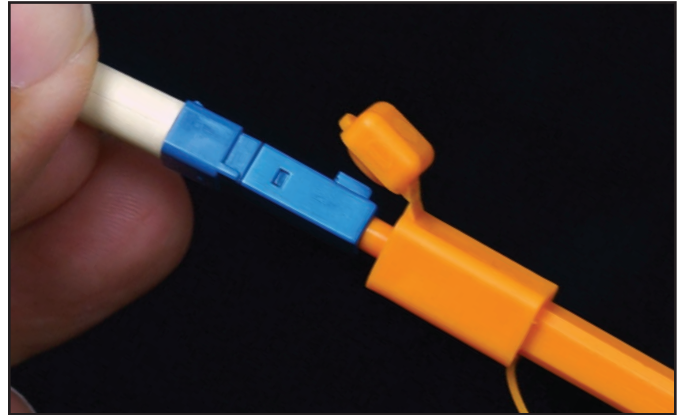
View the Combination CleaningTM Video and see the difference for yourself!

 **Chemtronics[®]**
Nothing Performs Like Chemtronics

CLEAR CONNECTION TOOL



Remove cap for cleaning adapters and bulkheads



Flip open cap for cleaning connectors

Fast, Effective Fiber Connector End-Face Cleaning

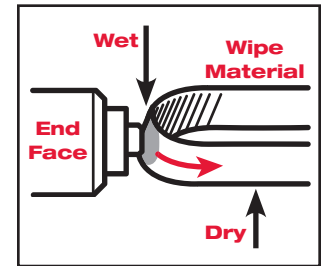
CCT™ Clear Connection Tool used with the FOCCUS™ MX Precision Cleaning Pen provides a fast, simple method of fiber optic cleaning. End faces in bulkheads or on cable assemblies are both effortlessly cleaned the first time . . . every time.

CCT has an easy to use mechanism that advances fabric over a cleaning tip with just a short push and click of the tool. Using the CCT with the FOCCUS MX Precision Cleaning Pen provides for fast, easy and repeatable Combination Cleaning™.

- Cleans connectors on back plane and on jumpers
- Uses Combination Cleaning™ process for first time cleaning, every time
- Effective for the widest range of contaminants
- Easy to use for quick and reliable cleaning
- Rugged and durable, great for all work sites
- Up to 800 cleanings per kit

Combination Cleaning™ process with CCT Clear Connection Kit

Wet the CCT fabric tip with the MX pen, insert the CCT tip into the connector, and push in the tool 2-3 clicks advancing the fabric from wet-to-dry, perfectly cleaning the end-face. Combination Cleaning™ eliminates all debris and contamination the first time, avoiding expensive rework and truck-rolls from bad connections.



Combination Cleaning™ is industry proven, exceeding IEC 61300-3-35, IEC TR62627-01, and meeting Telcordia GR-2923-CORE and SAE Aerospace AIR6031.



CCT-125 Clear Connection Tool
 Cleaning tool for MU and LC connectors

CCT-125KIT Clear Connection Kit
 Kit Contains:

- 1 1.25mm Clear Connection Tool (CCT-125)
- 1 MX Precision Cleaning Pen (FW2150)



CCT-250 Clear Connection Tool
 Cleaning tool for FC, SC and ST connectors

CCT-250KIT Clear Connection Kit
 Kit Contains:

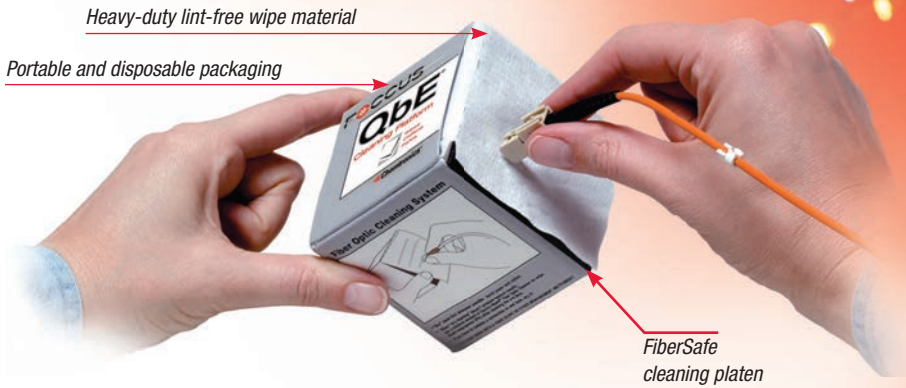
- 1 2.5mm Clear Connection Tool (CCT-250)
- 1 MX Precision Cleaning Pen (FW2150)



CCT-MPO Clear Connection Tool
 Cleaning tool for MPO connectors

CCT-MPOKIT Clear Connection Kit
 Kit Contains:

- 1 MPO Clear Connection Tool (CCT-MPO)
- 1 MX Precision Cleaning Pen (FW2150)



QbE® Cleaning Platforms

Portable and efficient, QbE® Cleaning Platforms offer more complete removal of microscopic contaminants, without the chance of damage to the optical fiber end face. Self-contained cleaning tools that can be used dry or wet, they are convenient and economical for use in field or OEM applications.

- Complete Fiber Optic Cleaning System — no refills to buy or investment in expensive mechanisms to maintain
- Up to 600 cleaning applications using the Combination Cleaning™ process
- Provides the optimum cleaning surface – FiberSafe™ cleaning platen is perfect for outside plant or OEM application
- Heavy duty lint-free wiping material — tough enough to remove buffer-gel and heavy soils, yet soft and compliant for safe end face cleaning
- Patented — U. S Patent Number 6,865,770 and foreign patents



QbE – Cleaning platform for SC, ST & FC connectors

QBE 600 perforated wipes per box
2.75" x 3" / 7.0 cm x 7.6 cm

QbE-R – Cleaning platform for SC, APC & MTP recessed connectors

QBE-R 600 perforated wipes per box
2.75" x 3" / 7.0 cm x 7.6 cm

p-QbE – Portable cleaning platform for SC, ST, FC, MT-type, APC and recessed connectors

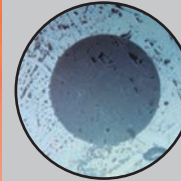
PQBE 400 perforated wipes per box
1.375" x 3" / 3.6 cm x 7.6 cm

QbE-2 – Portable cleaning platform for LC, SC, FC, MT-type and APC connectors

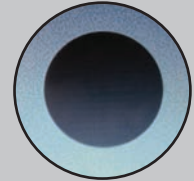
QBE-2 400 perforated wipes per box
1" x 2.5" / 2.54 cm x 6.35 cm

FOCCUS Combination Cleaning™

Clean first time... Every time!



Connector contaminated with dirt & oils



Connector after FOCCUS™ Combination Cleaning™

FOCCUS products are designed for optimal cleaning of connectors using Combination Cleaning™ process. The end face is passed through a lightly moistened spot on the lint-free wiper, then drawn into the dry area. The large cleaning platform assures the proper angle for UPC and APC connectors.



Effective on common soils:

- Finger oils
- Mineral oils and grease
- Gels & pulling lubricants
- Dust, dirt & carbon
- Water & salt residue & more

Combination Cleaning is industry proven, exceeding IEC 61300-3-35, IEC TR62627-01, and meeting Telcordia GR-2923-CORE and SAE Aerospace AIR6031.

Dry media can smear oils, not fully remove dry particulates, and can create a static field that attracts and holds onto additional debris. Wet cleaning can oversaturate connectors, drawing up contamination from around the ferrule. Without Combination Cleaning, additional cleaning passes, replacement jumpers or connectors may be required.



CCK4 FirstTime™ Fiber Optic Cleaning Tool Kit

Features & Benefits:

- Up to 600 applications
- Precision Clean SC/LC, UPC/APC, MT™ Female Connectors

Contains:

1 QbE-2 Cleaning Platform, 2 MX Precision Cleaning Pens (FW2150)

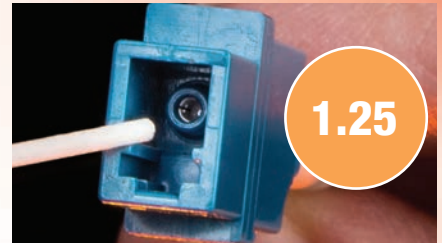


1.25mm Fiber Optic Sleeve Cleaning Swab

Ideal tool for cleaning 1.25 mm fiber optic sleeves, back plane connections, and polishing pucks

- Specifically designed to clean all 1.25 mm alignment sleeves, adapters and 1.25 mm back plane connections
- Free of fibers, adhesives, and binders that can generate residue
- Contains no seams or sharp surfaces that can generate particles or cause scratches
- Patented — US Patent 6,795,998 and foreign patents

25123X 100 swabs per bag **25125F** 15 swabs per tube **26122F** 50 swabs per tube



Swab Length	Handle Width	Head Length	Head Thickness	Head Width	Handle Material	Head Material
6.0" / 15.24 cm	0.08" / 2.0 mm	0.67" / 1.70 cm	0.05" / 1.25 mm	0.05" / 1.25 mm	Polypropylene	Proprietary Polyester



2.5 mm Torque-Tube Swab

Knurled grip handle swab for better gripping, cleaning end face and alignment sleeves

- Long, 6" super grip handle; 2.5mm precision swab tool for back plan
- Flexible swab head conforms to connector face
- No adhesives, binders, or fibers to leave residues

48062F 50 swabs per tube



Swab Length	Handle Width	Head Length	Head Thickness	Head Width	Handle Material	Head Material
6.0" / 15.2 cm	0.09" / 2.2 mm	0.41" / 10.5 mm	0.10" / 2.5 mm	0.12" / 3.0 mm	Polypropylene	Polyurethane Foam



MTP Connector Chamois Swab

Ideal chamois swab for MTP cleaning

- Seamless blunt design makes precise contact with MTP end face
- High absorbency swab quickly and safely removes contaminants
- Free of adhesives or binders; will not leave residue
- Patented — U. S. Patent Number 7,526,830 and foreign patents



Swab Length	Handle Width	Head Length	Head Width	Handle Material	Head Material
3.25" / 8.25 cm	0.38" / 9.6 mm	0.88" / 22.3 mm	0.38" / 9.6 mm	ABS	Synthetic Chamois
6" / 15.4 cm	0.38" / 9.6 mm	0.88" / 22.3 mm	0.38" / 9.6 mm	ABS	Synthetic Chamois



Chemtronics offers certification training for the Combination Cleaning process, teaching the right process with the right products.

✓ Call 1-800-645-5244 x 154 to schedule your hands-on training with our technical experts!



www.chemtronics.com
Chemtronics USA:
 8125 Cobb Center Drive, Kennesaw, GA
 770-424-4888 | 800-645-5244
askchemtronics@chemtronics.com

ITW Contamination Control EMEA:
 Saffierlaan 5, 2132 VZ Hoofddorp, The Netherlands
 +31 88 1307 400
info@itw-cc.com



X-ON Electronics

Largest Supplier of Electrical and Electronic Components

Click to view similar products for [Other Tools](#) category:

Click to view products by [Chemtronics](#) manufacturer:

Other Similar products are found below :

[CR-0AFL4--332K](#) [568681-1](#) [5800-0090](#) [58061-1](#) [59065-5](#) [59085](#) [00-8273-RDPP](#) [00-8729-WHPP](#) [593033](#) [593072](#) [593564100](#) [593575](#)
[593593](#) [011349-000](#) [CRCW08052740FRT1](#) [LUC-018S070DSP](#) [LUC-024S105DSP](#) [599-2021-3-NME](#) [599-JJ-2021-03](#) [00-5080-YWPP](#) [00-](#)
[9089-RDPP](#) [00-9300-RDPP](#) [CRCW2010331JR02](#) [601-JJ-06](#) [601-SPB](#) [601YSY](#) [602-JJ-03](#) [602SPB](#) [603-JJ-07-FP](#) [603-JJY-04](#) [M15570-25](#)
[CRTN1013](#) [CS16](#) [6-1579014-0](#) [6203](#) [62200-5709](#) [6240-1](#) [M43435 TY 2 SZ 3 FIN B BLK](#) [M43435 TY 5 SZ 3 FIN C NAT](#) [M-5Z](#) [M6816](#)
[M7298](#) [M7456](#) [M7976](#) [660-29ABT1](#) [662508-1](#) [CVHD-950X-93.333](#) [CW104-01X](#) [671-GP-04-KT39-73207](#) [CW307-01A](#)