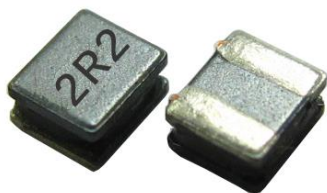


BWVN Series



BWVN series, an automatic assembly power inductor, is suitable for the portable DC-DC converter application.

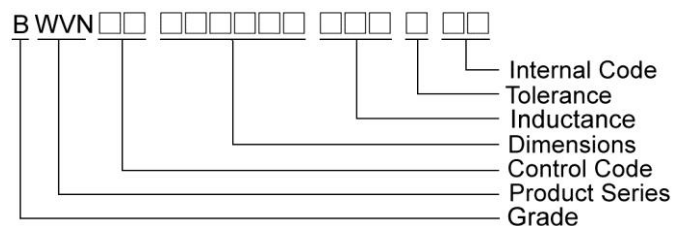
Features

- RoHS compliant
- Highly accurate dimensions can be mounted automatically
- Terminals are highly resistant to pull forces.
- Highly reliable in environments of sudden temperature change

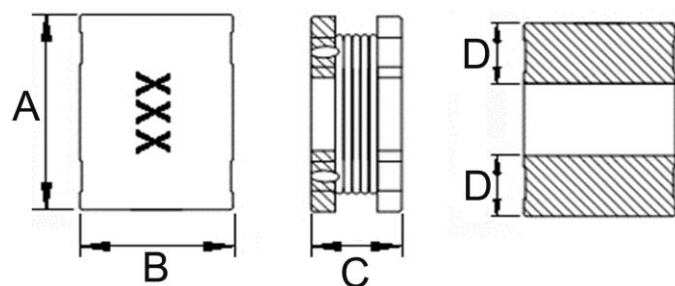
Applications

- Portable equipment such as, PDA,MP3,HDD, Mobil phone, DSC etc.
- Game Console.
- DC / DC converters.

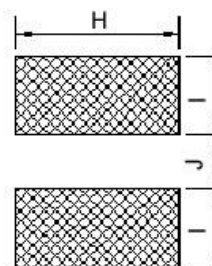
Product Identification



Shapes and Dimensions



Recommended Pattern



Dimensions in mm

TYPE	A	B	C	D	H	I	J
BWVN00322515	3.2±0.2	2.5±0.2	1.5±0.2	1.0	2.6	1.2	1.0

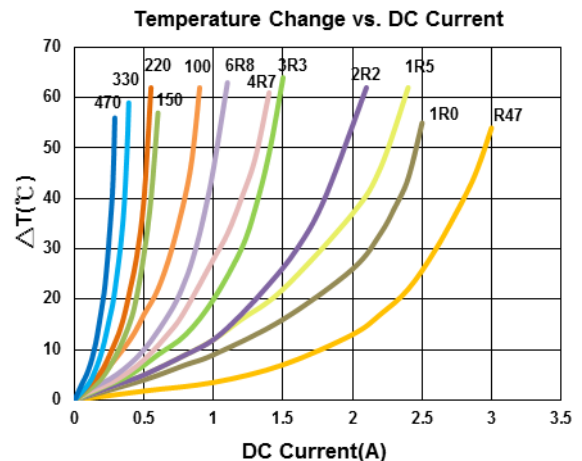
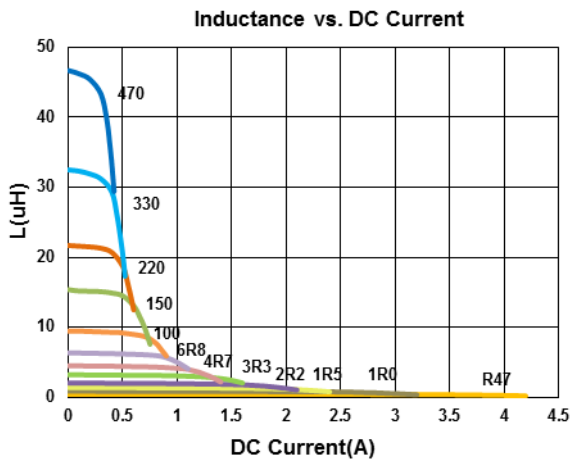
Electrical Characteristics

Part Number	Inductance (uH)	Tolerance (±%)	Test Frequency (MHz)	RDC (Ω) ±20%	Isat (A)Max	Irms (A)Max	Marking
BWVN00322515R47□00	0.47	30	1	0.030	3.40	2.55	R47
BWVN003225151R0□00	1.0	30	1	0.045	2.30	2.05	1R0
BWVN003225151R5□00	1.5	30	1	0.057	1.75	1.75	1R5
BWVN003225152R2□00	2.2	20, 30	1	0.076	1.55	1.60	2R2
BWVN003225153R3□00	3.3	20, 30	1	0.12	1.25	1.20	3R3
BWVN003225154R7□00	4.7	20, 30	1	0.18	1.00	1.00	4R7
BWVN003225156R8□00	6.8	20, 30	1	0.24	0.85	0.85	6R8
BWVN00322515100□00	10	20, 30	1	0.38	0.75	0.70	100
BWVN00322515150□00	15	20, 30	1	0.70	0.55	0.50	150
BWVN00322515220□00	22	20, 30	1	0.81	0.50	0.45	220
BWVN00322515330□00	33	20, 30	1	1.05	0.36	0.32	330
BWVN00322515470□00	47	20, 30	1	1.48	0.28	0.24	470

Note: When ordering, please specify tolerance code. Tolerance: M=±20% , T =±30%

- Operating temperature range - 40°C ~ 125°C(Including self - temperature rise)
- Isat for Inductance drop 30% from its value without current
- Iirms for a 40°C temperature rise from 25°C ambient with current
- Measure Equipment :
- L : Agilent/HP4287A+ Agilent/HP16197A, 1MHz 200mV
- RDC : DIGITAL MILLINHM METER CHROMA 16502, or equivalent
- Isat & Iirms : Agilent HP4284A

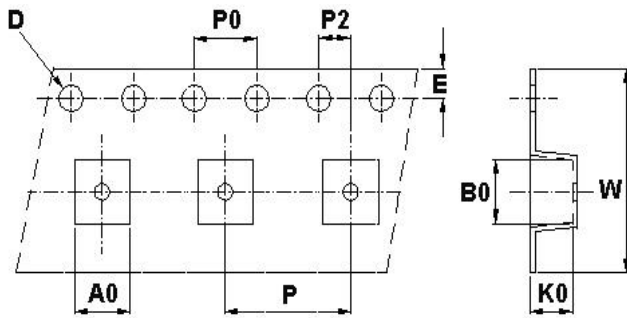
Test Instruments : HP4287A Material/Impedance Analyzer



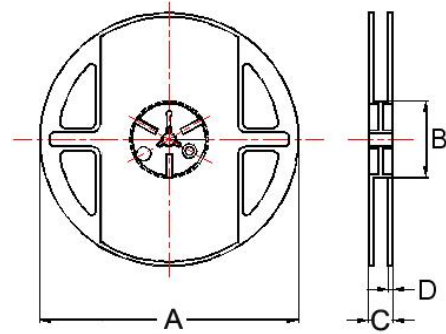
SMD Unshielded Power Inductors - BWVN Series

Packaging Specifications

Tape Dimensions



Reel Dimensions



Dimensions in mm

TYPE	Tape Dimensions									Reel Dimensions				Quantity
	A0	B0	K0	D	E	W	P	P0	P2	A	B	C	D	PCS / Reel
BWVN00322515	2.85	3.56	1.80	1.55	1.75	8	4	4	2	178	60	9	1.5	800

X-ON Electronics

Largest Supplier of Electrical and Electronic Components

Click to view similar products for [Fixed Inductors](#) category:

Click to view products by [Chilisin](#) manufacturer:

Other Similar products are found below :

[CR43NP-680KC](#) [CR54NP-470LC](#) [CR54NP-820KC](#) [CR54NP-8R5MC](#) [70F224AI](#) [MGDQ4-00004-P](#) [MHL1ECTTP18NJ](#) [MHQ1005P10NJ](#)
[MHQ1005P1N0S](#) [MHQ1005P2N4S](#) [MHQ1005P3N6S](#) [MHQ1005P5N1S](#) [MHQ1005P8N2J](#) [PE-51506NL](#) [PE-53601NL](#) [PE-53602NL](#) [PE-](#)
[53630NL](#) [PE-53824SNLT](#) [PE-92100NL](#) [PG0434.801NLT](#) [PG0936.113NLT](#) [9220-20](#) [9310-16](#) [PM06-2N7](#) [PM06-39NJ](#) [A01TK](#) [1206CS-](#)
[471XJ](#) [HC2LP-R47-R](#) [HC2-R47-R](#) [HC3-2R2-R](#) [HC3-R50-R](#) [HC8-1R2-R](#) [HCF1305-3R3-R](#) [1206CS-151XG](#) [RCH664NP-140L](#) [RCH664NP-](#)
[4R7M](#) [RCH8011NP-221L](#) [RCP1317NP-332L](#) [RCP1317NP-391L](#) [RCR1010NP-470M](#) [RCR110DNP-331L](#) [DH2280-4R7M](#) [DS1608C-106](#)
[ASPI-4020HI-R10M-T](#) [B10TJ](#) [B82498B3680J000](#) [ELJ-RE27NJF2](#) [1812CS-153XJ](#) [1812CS-183XJ](#) [1812CS-223XJ](#)