

Common Mode Choke CUW Series

**Automotive
AEC-Q200**

RoHS Compliant
Halogen Free
REACH Compliant



- Noise Suppression
- Unshield
- Wire Wound
- Ferrite
- General Signal line

Part Numbering

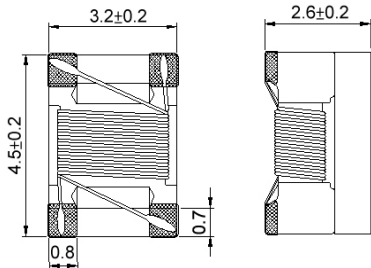
CUW	43	T	-	513	T	-	AU
Series Name	Dimensions Code (mm)	Category		Inductance (uH)	Tolerance		Internal Code
	43 4.5x3.2x2.6	T		513 51	T ±30%		
		M		104 100			

Common Mode Choke CUW Series

**Automotive
AEC-Q200**

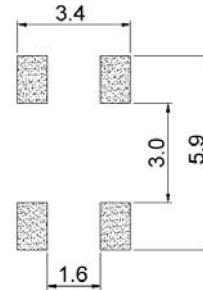
CUW43T - AU Type

■ Dimensions



unit:mm

■ Recommended Land Pattern



unit:mm

■ Electrical Characteristics

Part No.	Inductance (uH)	Test Freq.	Impedance (Ω)Min. (Ω)Typ.	Test Freq. (MHz)	RDC (Ω)Max.	Irms (mA)Max.	Rated Voltage (Vdc)Max.	Withstand Voltage (Vdc)	Insulation Resistance (MΩ)Min.	Tol. (±%)
CUW43T-113□-AU	11	100kHz,0.1V	300 600	10	0.6	250	50	125	10	30
CUW43T-223□-AU	22	100kHz,0.1V	500 1200	10	1	200	50	125	10	30
CUW43T-513□-AU	51	100kHz,0.1V	1000 2800	10	1	200	50	125	10	30
CUW43T-104□-AU	100	100kHz,0.1V	2000 5800	10	2	150	50	125	10	30

Note: When ordering, please specify tolerance code. Tolerance: T=±30%

- Operating temperature range - 40°C ~ 125°C(Including self - temperature rise)
- RDC: SINGLE WIRE TEST VALUE
- Irms for 40°C rise above 25°C ambient.
- Measure Equipment:
 Z: HP4286A / HP4287A / AgilentE4991A
 L: HP4284A+HP42841A/HP4285A+HP42841A
 RDC: CHROMA MILLIOM METER MODE 16502
 Irms: HP4284A+HP42841A/HP4285A+HP42841A
 Insulation Resistance: HP4339B

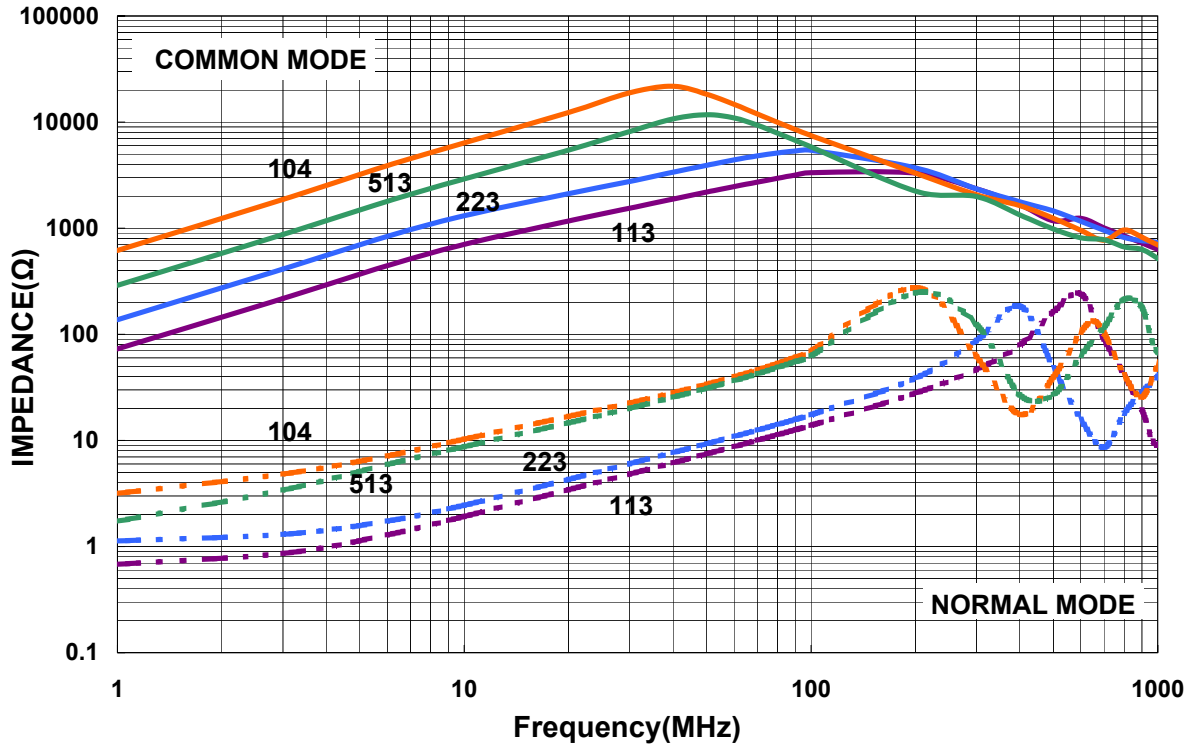
Common Mode Choke CUW Series

**Automotive
AEC-Q200**

CUW43T - AU Type

Characteristics Graph

Typical Impedance vs. Frequency Characteristics

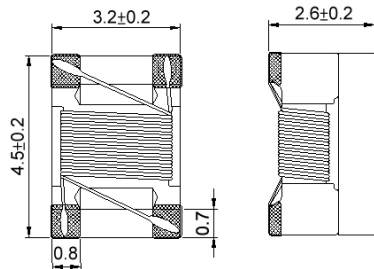


Common Mode Choke CUW Series

**Automotive
AEC-Q200**

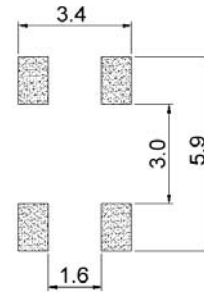
CUW43M - AU Type

■ Dimensions



unit:mm

■ Recommended Land Pattern



unit:mm

■ Electrical Characteristics

Part No.	Inductance (uH)	Test Freq.	RDC (Ω)Max.	I _{rms} (mA)Max.	Rated Voltage (Vdc)Max.	Withstand Voltage (Vdc)	Insulation Resistanc (MΩ)Min.	Tolerance (±%)
CUW43M-113□-AU	11	100kHz,100mV	0.5	360	50	125	10	30
CUW43M-223□-AU	22	100kHz,100mV	0.6	310	50	125	10	30
CUW43M-513□-AU	51	1MHz,200mV	1	230	50	125	10	30
CUW43M-104□-AU	100	1MHz,200mV	2	200	50	125	10	30

Note: When ordering, please specify tolerance code. Tolerance: T=±30%

1. Operating temperature range - 40°C ~ 125°C(Including self - temperature rise)

2. RDC: SINGLE WIRE TEST VALUE

3. I_{rms} for 40°C rise above 25°C ambient.

4. Measure Equipment:

L: HP4284A+HP42841A/HP4285A+HP42841A

RDC: CHROMA MILLIOM METER MODE 16502

I_{rms}: HP4284A+HP42841A/HP4285A+HP42841A

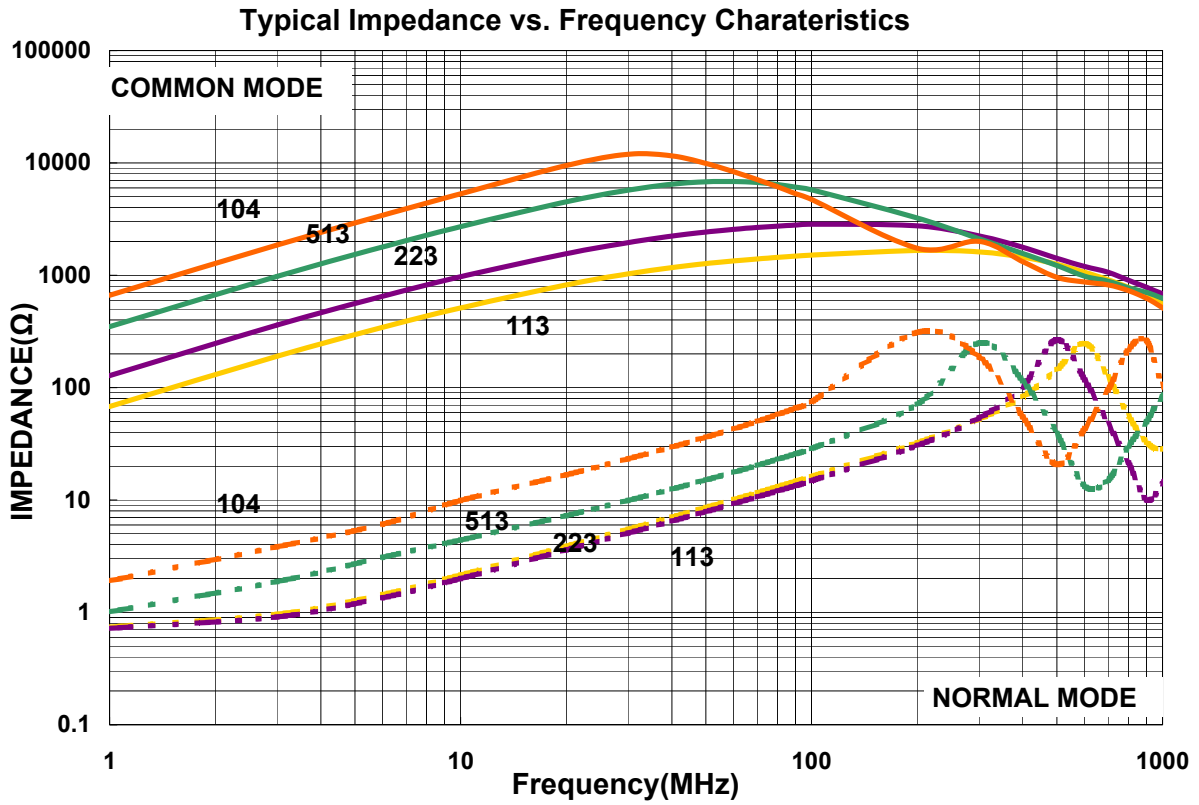
Insulation Resistance: HP4339B

Common Mode Choke CUW Series

**Automotive
AEC-Q200**

CUW43M - AU Type

Characteristics Graph

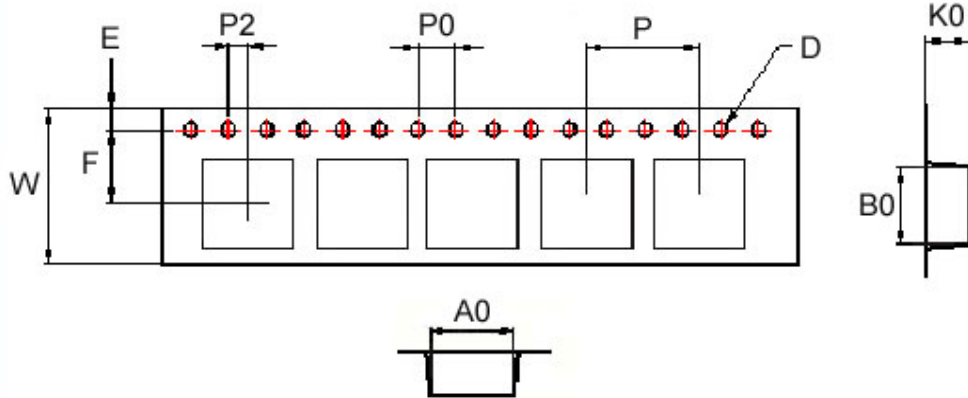


Common Mode Choke CUW Series

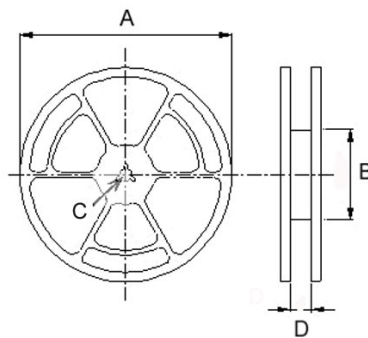
**Automotive
AEC-Q200**

■ Packaging

Tape Dimensions



Reel Dimensions



Dimensions in mm

TYPE	Tape Dimensions										Reel Dimensions				Quantity
	A0	B0	K0	D	E	F	W	P	P0	P2	A	B	C	D	PCS / REEL
CUW43	3.6	4.9	2.7	1.5	1.75	5.5	12	8	4	2	330	100	13	13.4	2500

X-ON Electronics

Largest Supplier of Electrical and Electronic Components

Click to view similar products for [Common Mode Chokes / Filters](#) category:

Click to view products by [Chilisin](#) manufacturer:

Other Similar products are found below :

[PE-64683](#) [RD5122-6-9M6](#) [ST6118T-R](#) [FE3X025-10-7NL](#) [T8114NLT](#) [TCM0806G-350-2P-T](#) [TCM0806G-650-2P-T](#) [IND-0110](#)
[UAL21VR0802000](#) [UALSC023000000](#) [UALSC1020JH000](#) [UALSU10VD20010](#) [UALSU9VD070100](#) [36-00037](#) [CM7060M132R-10](#)
[UALW21HS072450](#) [UALSU9H0208000](#) [UAL24VK06450CH](#) [PLT10HH501100PNB](#) [PLT10HH401100PNB](#) [PLT10HH1026R0PNB](#) [36-](#)
[00029-01](#) [PE-67531](#) [TLH10UB](#) [113 OR5](#) [2752045447](#) [CM8663Z161B-10](#) [7351V](#) [CMF16-153131](#) [T8116NLT](#) [CMS2-10-R](#) [FE2X10-4-2NL](#)
[T8003NLT](#) [CTX01-13663](#) [CTX66-19521-R](#) [RC212-0.5-10M](#) [RC112-0.4-15M](#) [RC212-0.6-6M8](#) [RC212-0.4-15M](#) [RC112-0.3-30M](#) [4534-3](#)
[WTCF2012Z0M751PB](#) [PH9408.814NLT](#) [B82498B3221J000](#) [PAC6006.364NLT](#) [PAC6006.444NLT](#) [PAC6006.204NLT](#) [PH9407.204NLT](#)
[PAC6006.264NLT](#) [PH9408.105NLT](#) [PH9408.494NLT](#)