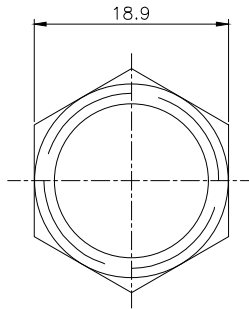
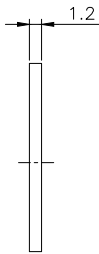
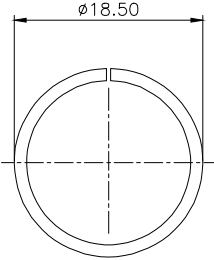


Specifications

Coupling: Threaded coupling
 Shell material: Brass with Nickel Plate
 Insert material: bakelite
 Contact material: copper Silver Plate/Nickel
 Termination: Solder
 Mating cycle: 500
 Cable diameter: -20°C +85°C

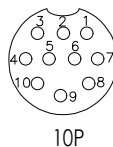
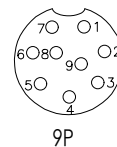
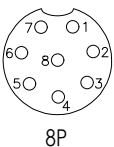
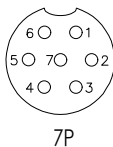
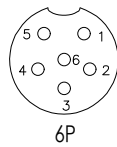
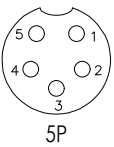
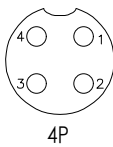
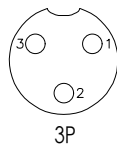
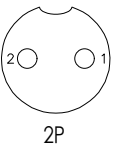


Ordering Information

XD - GX16 - NP - *

No. of Pin
2-10 Pin

Contact Type
F=Female
M=Male



NO. of contacts	芯数	2	3	4	5	6	7	8	9	10
Rated current (A)	额定电流	7A	7A	7A	7A	5A	5A	5A	5A	5A
Operation limit voltage (AC.V.rms)	工作电压 (AC.V) 分钟	220V	220V	125V	125V	125V	125V	125V	125V	125V
Withstanding voltage (AC.V.rms) 1 minute	耐电压	1500	1500	1500	1000	1000	1000	1000	1000	1000
Insulation resistance (mΩ)	绝缘阻抗	1500	1500	1500	1000	1000	1000	1000	1000	1000
Contact resistance (mΩ)	接触阻抗	3	3	3	4	5	5	4	5	5
Solder cup mouth aperture	焊杯口径 (mm)	φ1.4	φ1.4	φ1.4	φ1.2	φ0.8	φ0.8	φ0.8	φ0.8	φ0.8
Solder inter diameter	接触体孔径 (mm)	φ2.5	φ2.5	φ2.5	φ2.0	φ1.2	φ1.2	φ1.2	φ1.2	φ1.2

			GENERAL TOLERANCE	制图 DRAWING	深圳讯答科技有限公司 ShenzhenXundaTechnology Co.,Ltd			
			DIM TOL	审核 CHECK				
			X.X ±0.30	批准 APPROVAL	产品名称 TITLE	GX16 航空插头 公头	版本 REV.	A
			X.XX ±0.20	比例 SCALE	产品料号 PART NO.	XD-GX16-NP-M	单位 UNITS	mm
			X.XXX ±0.10	投影 Projection	材料 MATERIAL		页次 SHEET	1/1
			Angle ±3.0°					
序号 No.	变更内容 MODIFY CONTENT	日期 MODIFY DATE						

X-ON Electronics

Largest Supplier of Electrical and Electronic Components

Click to view similar products for [Standard Circular Connector](#) category:

Click to view products by [chxunda](#) manufacturer:

Other Similar products are found below :

[600273N007](#) [6134-336-13149](#) [6134-337-11149](#) [6134-337-2390](#) [6134-341-17149](#) [67-02E12-60PX](#) [680-SMG](#) [CXS3102A181S](#)

[D38999/20FC8SA L/C](#) [75-190216-08S](#) [75-190611-03S](#) [75-474014-05S](#) [75-474618-04S](#) [75-474620-07P](#) [799539-000](#) [805-005-07NF11-19PC](#)

[805-005-07NF15-7PA](#) [FMP.2M.310.XLCT](#) [836783-1](#) [862256-1](#) [866857-1](#) [867865-1](#) [PT08P-14-19S](#) [PT08P-14-5S](#) [QCM019PC2DC012B](#)

[121583-0217](#) [121667-0020](#) [RD10A16-19-P6CS051/1](#) [RD16A14-12-S6CS051/2](#) [1301240268](#) [1301240275](#) [1301860906](#) [DCU-08BFEA-](#)

[LL7001](#) [RM15WTP-CP\(5\)\(71\)](#) [14482](#) [16283-18](#) [1877910-1](#) [206039-3](#) [206323-1](#) [207002-2](#) [207682-1](#) [CA06COME14SA7P](#) [211777-1](#) [JL04-](#)

[1012CK\(05\)-R](#) [JL04V-2A28-11PE-R](#) [JL04V-2E10SL-3PE-B-R](#) [JL04V-2E20-15PE-B-R](#) [JL04V-2E20-4PE-B-R](#) [JL04V-2E24-10PE\(G\)-B-R](#)

[JL04V-6A24-11SE-EB-R](#)