



# CFM20 SERIES

## 20 WATT OPEN FRAME AC-DC MODULES



### Features

- \* Universal Input Range 85~264Vac
- \* Efficiency to 81%
- \* Industry Standard Pin Out
- \* Meets EN55032 Class B
- \* Continuous Short Circuit Protection
- \* PCB Mountable Type is Available



MODEL	OUTPUT VOLTAGE	MAX. LOAD	MIN. LOAD	RIPPLE & NOISE NOTE 1	VOLTAGE ACCURACY NOTE 2	LINE REGULATION NOTE 3	LOAD REGULATION NOTE 4	% EFF. (Typ.) NOTE 5
CFM2001S	5 V	4400 mA	0 A	1%	±1%	±0.5%	±1%	72%
CFM2002S	12 V	1800 mA	0 A	1%	±1%	±0.5%	±1%	79%
CFM2003S	15 V	1400 mA	0 A	1%	±1%	±0.5%	±1%	80%
CFM2005S	24 V	920 mA	0 A	1%	±1%	±0.5%	±1%	81%
CFM2007S	3.3 V	4400 mA	0 A	50mV	±1%	±0.5%	±1%	66%
CFM2009S	9 V	2450 mA	0 A	1%	±1%	±0.5%	±1%	76%

Specifications are subject to change without notice.

## Specifications

### INPUT SPECIFICATIONS:

Voltage	85~264Vac 120~370Vdc
Frequency	47 to 63Hz
Inrush Current	40A max. @230Vac
Conducted EMI	CISPR/FCC Class B
Leakage Current	3.5mA max.

### OUTPUT SPECIFICATIONS:

Holdup Time	16ms typ. @115Vac
Short Circuit Protection	Hiccup Mode (Auto Recovery)
Over Voltage Protection	TVS Component to Clamp
Temperature Coefficient	±0.05%/°C max.

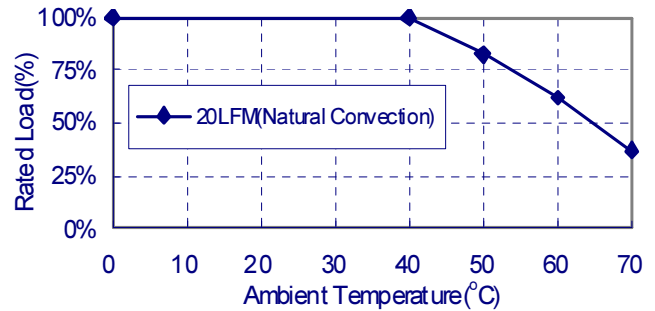
### GENERAL SPECIFICATIONS:

Isolation	Input to output = 4,242VDC
Operating Temperature	0 ~ 70°C (See Derating Curve)
Storage Temperature	-20~85°C
Humidity	93% RH max. Non Condensing
Cooling	Natural Convection
Switching Frequency	67KHz Typical
MTBF	MIL-HDBK-217F, GB, 25°C/115VAC 300Khrs min.
Altitude	2000m
Dimensions	3.501x2.000x0.906Inches (88.92x50.80x23.00mm) (CFM200XS-P) 3.501x2.000x1.000Inches (88.92x50.80x25.40mm)
Weight	100g (0.22 Pounds)

### SAFETY AND EMC:

Emission and Immunity	EN55032 Class B EN61000-6-3, EN61000-3-2, EN61000-3-3 EN55024, EN61204-3, EN61000-6-1
Safety	EN/IEC/UL 60950-1, EN/IEC/UL 62368-1

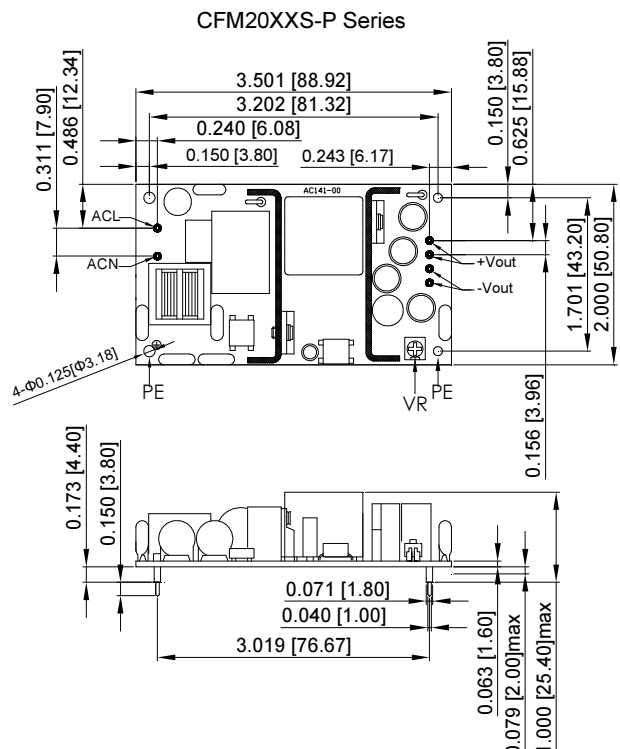
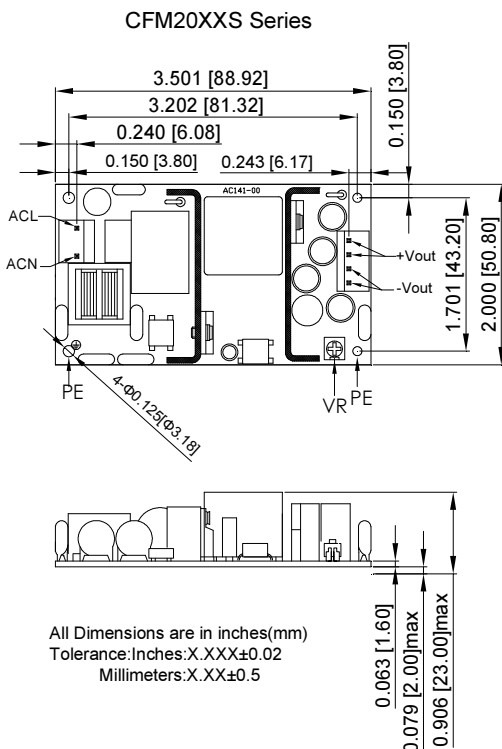
## CFM20S Series Derating Curve



### NOTE:

1. Add a 0.1uF ceramic capacitor and a 10uF E.L. capacitor to output for Ripple & Noise measuring @20MHz BW.
2. Voltage accuracy is set at 100% rated load and 25°C Ta.
3. Line regulation is measured from high line to low line with full load.
4. Load regulation is measured from full to 10% load.
5. Typical efficiency at 230VAC and full load at 25°C.
6. Standard input and output connectors wafer with LONG CHU P3060 series and mate with MOLEX housing 5195 series or equivalent.
7. Model "CFM200XS-P": Connectors with pcb mountable type.

## Mechanical Specification



Typical at 25°C, nominal line and 75% load, unless otherwise Specified

## X-ON Electronics

Largest Supplier of Electrical and Electronic Components

*Click to view similar products for [Switching Power Supplies](#) category:*

*Click to view products by [Cincon](#) manufacturer:*

Other Similar products are found below :

[70841011](#) [73-551-0005](#) [73-551-0048](#) [EVS57-5R3/A](#) [AAD600S-4-OP](#) [MS924](#) [HWS50A-5/RA](#) [KD0204](#) [LDIN100150](#) [FP80](#) [FRV7000G](#)  
[22929](#) [PS3E-F12F](#) [CQM1IA121](#) [VI-PU22-EXX](#) [LDIN5075](#) [432703037161](#) [09-160CFG](#) [LPM000-BBAR-08](#) [LPM000-BBAR-07](#) [08-30466-](#)  
[1055G](#) [DMB-EWG](#) [CQM1IPS01](#) [SP-300-5](#) [CQM1-IPS02](#) [VI-MUL-ES](#) [22829](#) [08-30466-0028G](#) [09-250CFG](#) [CA400](#) [H47251](#) [96PSR-](#)  
[A460WOTH-2](#) [VP-E2935648E](#) [G08-L](#) [G06-Q01](#) [GHA300F-12-SNF](#) [MTA040009A](#) [FSA150024A](#) [VI-RUR22-EWXX](#) [VI-PU03-EYW](#)  
[PM1-03B-48-2](#) [VI-LUF-EW](#) [VI-QCWB3-CSV](#) [HLS30ZE-NT8](#) [UT1404-7](#) [ERP-350-12](#) [S8FSG01512C](#) [S8FSG03012C](#) [VI-PU22-EYY](#)  
[XPFM201A+](#) [S8FS-G15015C](#)