



# FM SERIES

## 5 AMP

### FILTER MODULE

CE

## FEATURES

- \* Quarter-Brick Size Meet Industrial Standard
- \* PCB Mount
- \* 5A Filter Module
- \* 200VDC Input Voltage Maximum
- \* All Capacitors are Multi-Layer Ceramic
- \* Fire & Smoke Meets EN45545-2



MODEL NUMBER	INPUT VOLTAGE	INPUT SURGE VOLTAGE	OUTPUT RATED CURRENT	DC RESISTANCE (+Vin to +Vo)	DC RESISTANCE (-Vin to -Vo)
FM05D200P	200 VDC max.	250 VDC max.	5 A max.	34 mΩ typ.	34 mΩ typ.

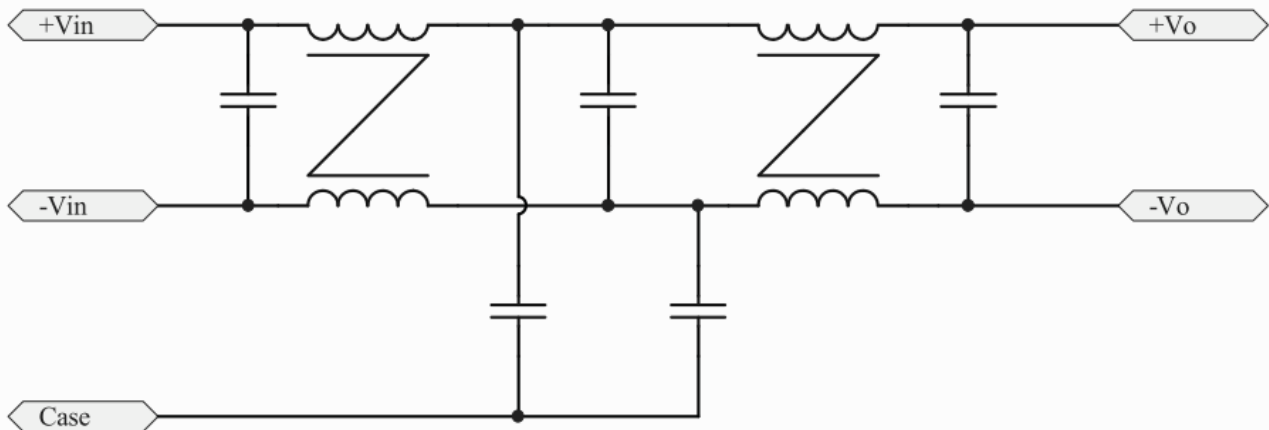


Figure1 Internal Schematic for FM05D200P Module

# SPECIFICATIONS

All Specifications Typical At Nominal Line, Full Load, and 25°C Unless Otherwise Noted

## INPUT SPECIFICATIONS:

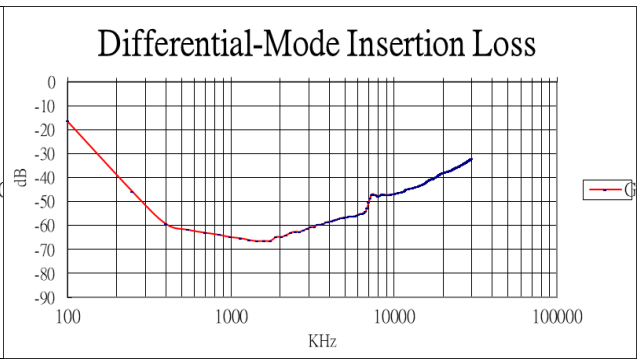
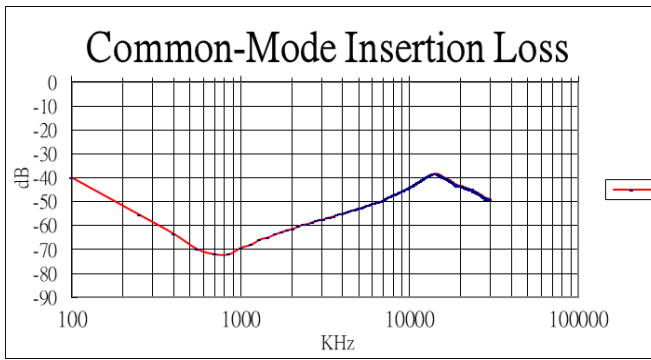
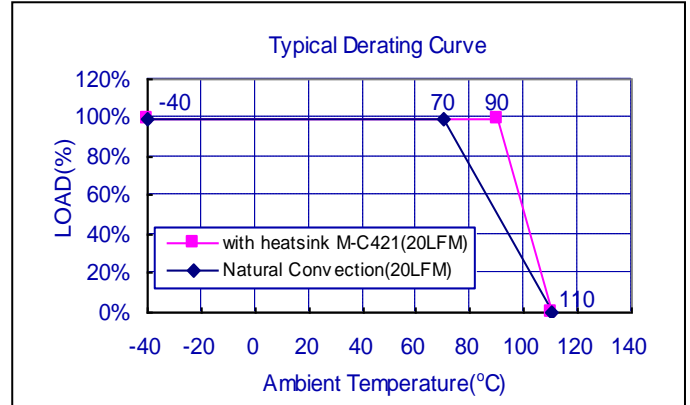
Input Voltage Range ..... 200Vdc max.  
 Input Surge Voltage ..... 250Vdc/1s  
 Input Rated Current (note 1) ..... 5A max

## GENERAL SPECIFICATIONS:

Isolation Voltage ..... (Input/Case, Output/Case) ..... 2250Vdc min.  
 1500Vac min.  
 Isolation Resistance .....(Input/Case, Output/Case)..... 10<sup>9</sup>ohm min  
 DC Resistance ..... See Table  
 Operating Case Temperature Range (note 1) ..... -40°C to +110°C  
 Storage Temperature Range ..... -55°C to +110°C  
 Dimensions ..... 2.28x1.45x0.50 inches (57.9x 36.8x12.7 mm)  
 Case Material ..... Aluminum Base-plate with Plastic Case  
 Potting.....Silicone Potting  
 Weight ..... 59g

## NOTE :

1. Maximum case temperature under any operating condition should not exceed 110°C.

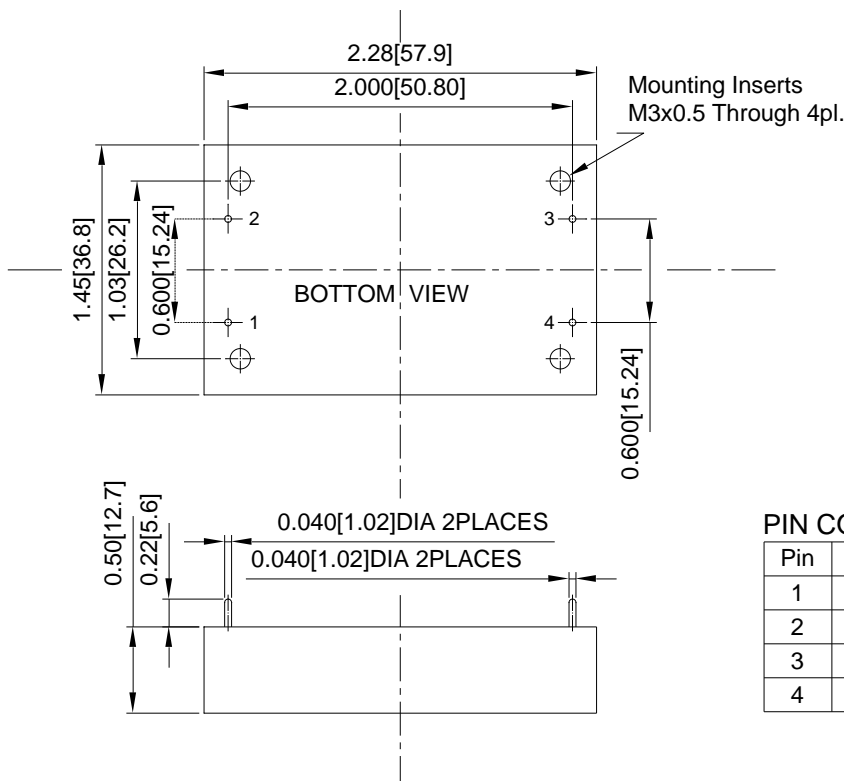


Typ common-mode and differential-mode insertion loss

All Dimensions In Inches (mm)

Tolerance Inches: X.XX= ±0.02 , X.XXX= ±0.010

Millimeters: X.X= ±0.5 , X.XX=±0.25



## PIN CONNECTION

Pin	Function
1	+V Input
2	-V Input
3	-V Output
4	+V Output

## X-ON Electronics

Largest Supplier of Electrical and Electronic Components

*Click to view similar products for [Power Line Filters](#) category:*

*Click to view products by [Cincon](#) manufacturer:*

Other Similar products are found below :

[6609019-3](#) [6609026-5](#) [6609030-6](#) [6609973-2](#) [D30A](#) [7-1609090-5](#) [F2810](#) [F4456A](#) [F7382Z](#) [F7863Z](#) [FAHAV3100ZC000](#) [806276](#) [FN2020B-1-06](#) [FN2080B-10-06](#) [FN2410H-32-33](#) [FN2410H-80-34](#) [FP144](#) [FS4153-20-06](#) [FS4353-500-99](#) [12-MMB-030-11-D](#) [DB4-393](#) [15811T200](#) [20B1](#) [LC630](#) [2B1](#) [1609080-2](#) [1609993-8](#) [1-6609070-1](#) [F1100AA02](#) [F1150CC10](#) [F1500CA10](#) [F1500CA15](#) [F4041Z](#) [F7585E](#) [1B1](#) [FN2070A-16-06](#) [FN2090A-20-06](#) [FN2090B-12-06](#) [FN2090Z-1-06](#) [FN2410H-25-33](#) [FN2410H-60-34](#) [FN2410H-8-44](#) [FN2412H-8-44](#) [FN323B-6-01](#) [FN3258H-130-35](#) [FN610R-3-06](#) [20EHQ7](#) [20EHZ7](#) [20K1](#) [30B6](#)