



FM SERIES

10 AMP and 20 AMP FILTER MODULE



FEATURES

- * Compact Size 2"x1", 2"x1.6"
- * PCB Mount
- * 10A and 20A Filter Module
- * 75VDC Input Voltage Maximum
- * Suitable for use with Half Brick And Quarter Brick Series



MODEL NUMBER	INPUT VOLTAGE	INPUT SURGE VOLTAGE	OUTPUT RATED CURRENT	DC RESISTANCE (+Vin to +Vo)	DC RESISTANCE (-Vin to -Vo)
FM10-100	75 VDC max.	100 VDC max.	10 A max.	11.5 mΩ typ.	4.5 mΩ typ.
FM20-100	75 VDC max.	100 VDC max.	20 A max.	9.5 mΩ typ.	5.7 mΩ typ.

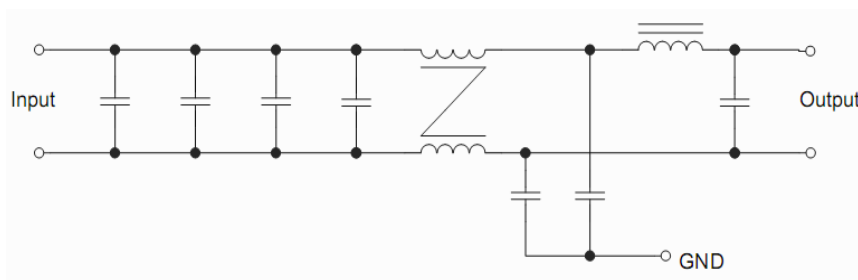


Figure1 Internal Schematic for FM10-100 Module

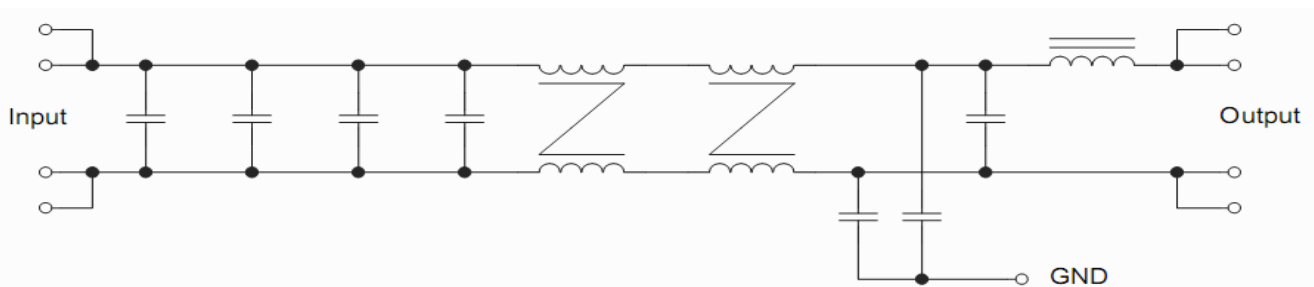


Figure2 Internal Schematic for FM20-100 Module

SPECIFICATIONS

All Specifications Typical At Nominal Line, Full Load, and 25°C Unless Otherwise Noted

INPUT SPECIFICATIONS:

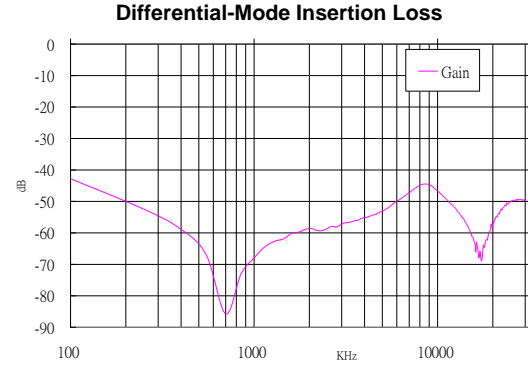
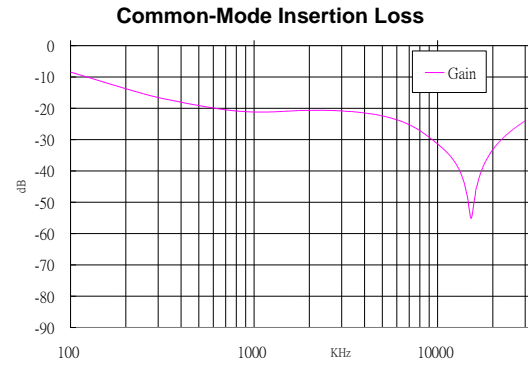
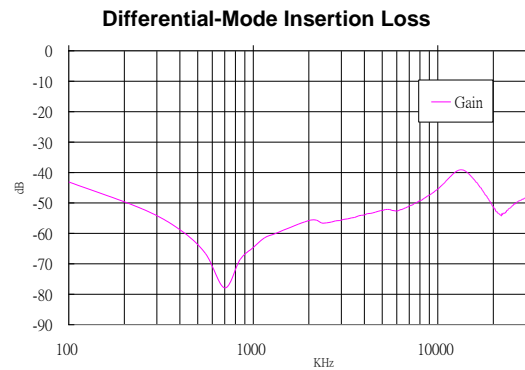
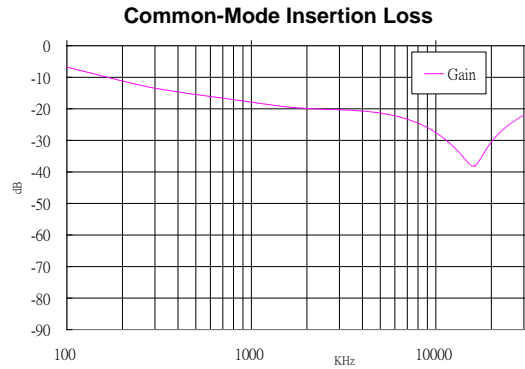
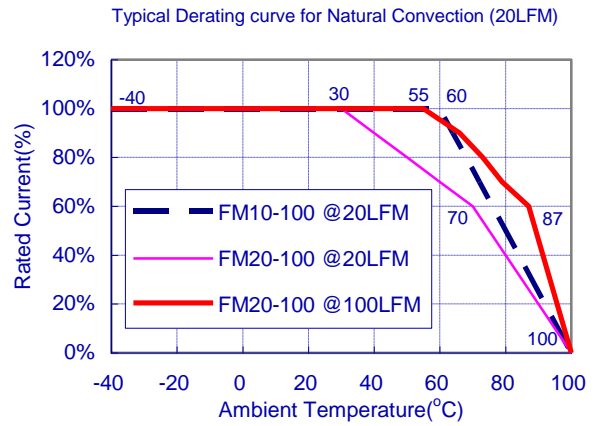
Input Voltage Range 75Vdc max.
 Input Surge Voltage 100Vdc/100ms
 Input Rated Current See Table

GENERAL SPECIFICATIONS:

Isolation VoltageInput/GND..... 1500Vdc min.
 Output/GND.....500Vdc min.
 Isolation Resistance.....10⁷ohm min.
 DC Resistance.....See Table
 Operating Case Temperature Range (note1) -40°C to +100°C
 Storage Temperature Range -55°C to +105°C
 Dimensions:
 FM10: 2.00x1.00x0.46inches (50.8x25.4x11.7 mm)
 FM20: 2.00x1.60x0.50inches (50.8x40.6x12.7 mm)
 Case Materials Plastic Case with Epoxy Potting
 Weight FM10: 30g
 FM20: 55g

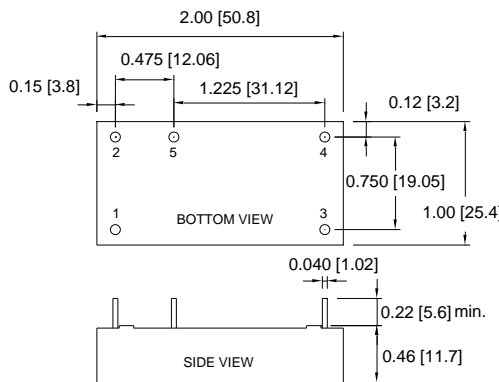
NOTE :

1. Maximum case temperature under any operating condition should not exceed 100°C.



Typical Common-mode and Differential-mode Loss for FM10-100

DIMENSIONS:
 NOTE: Pin Size is 0.04" Inch (1.02mm) DIA
 All Dimensions In Inches (mm)
 Tolerances Inches: X.XX= ±0.02 , X.XXX= ±0.010
 Millimeters: X.X= ±0.5 , X.XX=±0.25

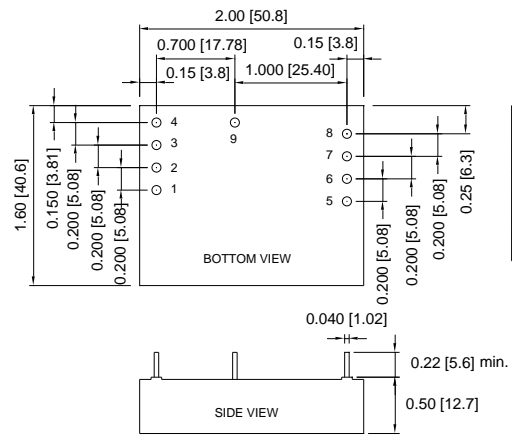


PIN CONNECTION	
Pin	Function
1	+V Input
2	-V Input
3	+V Output
4	-V Output
5	GND

FM10-100 Package

Typical Common-mode and Differential-mode Loss for FM20-100

DIMENSIONS:
 NOTE: Pin Size is 0.04" Inch (1.02mm) DIA
 All Dimensions In Inches (mm)
 Tolerances Inches: X.XX= ±0.02 , X.XXX= ±0.010
 Millimeters: X.X= ±0.5 , X.XX=±0.25



PIN CONNECTION	
Pin	Function
1,2	+V Input
3,4	-V Input
5,6	+V Output
7,8	-V Output
9	GND

FM20-100 Package

X-ON Electronics

Largest Supplier of Electrical and Electronic Components

Click to view similar products for [Power Line Filters](#) category:

Click to view products by [Cincon](#) manufacturer:

Other Similar products are found below :

[6609019-3](#) [6609026-5](#) [6609030-6](#) [6609973-2](#) [D30A](#) [7-1609090-5](#) [F2810](#) [F4456A](#) [F7382Z](#) [F7863Z](#) [FAHAV3100ZC000](#) [806276](#) [FN2020B-1-06](#) [FN2080B-10-06](#) [FN2410H-32-33](#) [FN2410H-80-34](#) [FP144](#) [FS4153-20-06](#) [FS4353-500-99](#) [12-MMB-030-11-D](#) [DB4-393](#) [15811T200](#) [20B1](#) [LC630](#) [2B1](#) [1609080-2](#) [1609993-8](#) [1-6609070-1](#) [F1100AA02](#) [F1150CC10](#) [F1500CA10](#) [F1500CA15](#) [F4041Z](#) [F7585E](#) [1B1](#) [FN2070A-16-06](#) [FN2090A-20-06](#) [FN2090B-12-06](#) [FN2090Z-1-06](#) [FN2410H-25-33](#) [FN2410H-60-34](#) [FN2410H-8-44](#) [FN2412H-8-44](#) [FN323B-6-01](#) [FN3258H-130-35](#) [FN610R-3-06](#) [20EHQ7](#) [20EHZ7](#) [20K1](#) [30B6](#)