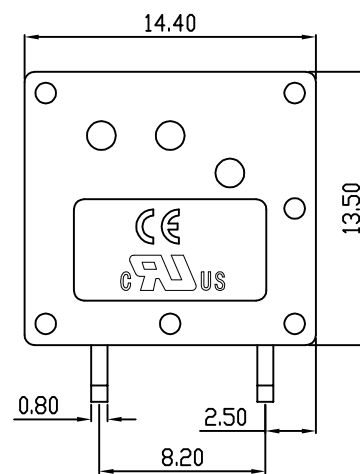
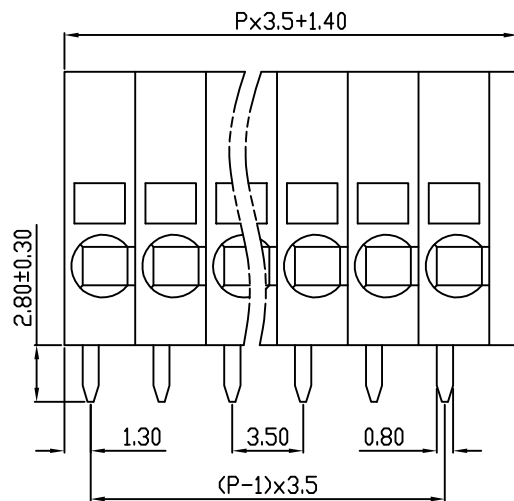
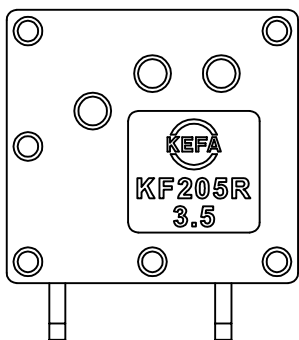
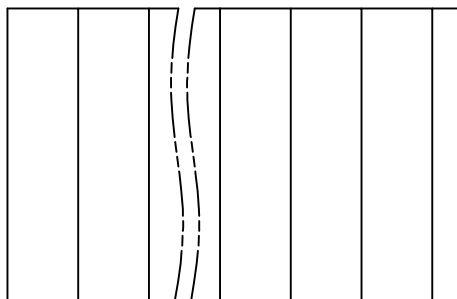
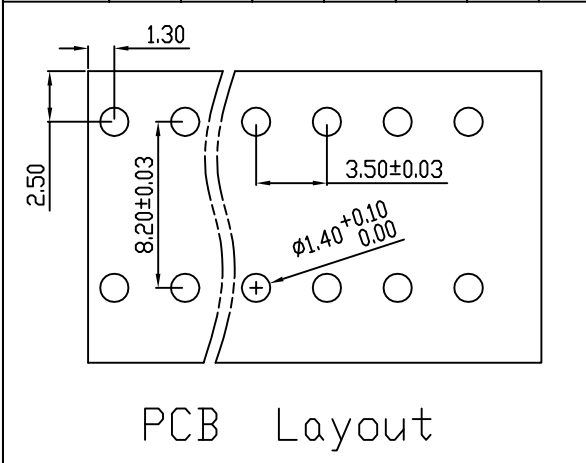


| linear dimension(Tolerances Standard GB/T 14486-2008) | | | | | | | | — | ∇ | \perp |
|---|-------|---------|----------|----------|-----------|------------|--------|------|----------|---------|
| variable range | to | over | over | over | over | over | over | to | over | over |
| | 6 | 6 to 10 | 10 to 30 | 30 to 60 | 60 to 100 | 100 to 160 | 160 to | | | |
| tolerance | ±0.20 | ±0.30 | ±0.50 | ±0.70 | ±1.00 | ±1.30 | ±1.60 | 0.10 | 0.30 | 0.60 |



| REVISION RECORD | | | | |
|-----------------|-------------|---------|----------|----------|
| REV. | DESCRIPTION | ECN No. | APPROVED | DATE |
| A | 新发行 | | CLF | 21.10.20 |
| | | | | |
| | | | | |

| UL/CUL 技术参数 | | | |
|-----------------------|---|------------------|---------|
| UL/CUL Technical Data | | | |
| 等级 | Use Group | B | C D |
| 额定电压 | Rated Voltage [V] | 300 | - 300 |
| 额定电流 | Rated Current [A] | 10 | - 10 |
| 接线范围 | Wire Range | 24-16 | |
| 单/多芯线 | Solid/Stranded [AWG] | | |
| 耐电压 | Withstanding Voltage | 1600V/1Min | |
| IEC 技术参数 | | | |
| IEC Technical Data | | | |
| 过电压类别 | Overvoltage Category | III | III II |
| 污染等级 | Contamination Class | 3 | 2 2 |
| 额定电压 | Rated Voltage [V] | 160 | 200 400 |
| 额定电流 | Rated Current [A] | 10 | 10 10 |
| 额定冲击电压 | Impulse withstand voltage ^a [KV] | 2.5 | 2.5 2.5 |
| 导线截面积 | Conductor cross section | 1.5 | |
| 硬质/柔性导线 | Solid/flexible [mm ²] | | |
| 材料 | | | |
| 绝缘材料 | Insulation Material | PA66 | |
| 阻燃等级 | Imflammability | UL94V-0 | |
| 导体材料 | Contactive Material | 铜合金 Copper alloy | |
| 导体表面镀层 | Contactive Coating | 镀锡 Tin Plated | |
| 一般参数 | | | |
| 间距 | Pitch [mm] | 3.5 | |
| 极数 | Poles [P] | 01~XX | |
| 剥线长度 | Stripping Length [mm] | 10 | |
| 螺丝 | Screw/扭矩 Torque(Max) [N.m] | - | |
| 工作温度 | Operating temperatur [°C] | -40~+105 | |
| 引针尺寸 | Pin Dimensions [mm] | 2.80 | |
| PCB板孔径 | PCB Hole Diameter [mm] | 1.40 | |

| | | | |
|------|-----|------|----------|
| DES. | SJD | DATE | 21.10.20 |
| CHK. | BY | DATE | 21.10.20 |
| APP. | CLF | DATE | 21.10.20 |

| | | | | | | | | |
|----------|----|---------|----|----------|-----|-----------------------------|------------|---|
| 单位/UNITS | mm | 尺寸/SIZE | A4 | 比例/SCALE | 1:1 | 第三视角/THIRD ANGLE PROJECTION | 版本/REV | A |
| | | | | | | 名称/TITLE | KF205R-3.5 | |



慈溪市科发电子有限公司
CIXI KEFA ELECTRONIC CO., LTD

X-ON Electronics

Largest Supplier of Electrical and Electronic Components

Click to view similar products for [Fixed Terminal Blocks](#) category:

Click to view products by [Cixi Kefa](#) manufacturer:

Other Similar products are found below :

[MBE-1512](#) [MBE-1520](#) [MBE-154](#) [MBE-156](#) [MBES-156](#) [MH-2512](#) [MHE-132](#) [MHE-163](#) [MI-254 \(35\)](#) [MPT-275](#) [ELM10110G](#) [BA311TU](#)
[BA411SU](#) [MV-254-D](#) [MV-255](#) [MV-493](#) [MVE-252](#) [MVE-253](#) [MVEB-153](#) [1705142](#) [1-796689-8](#) [1841320000](#) [S451](#) [29.007](#) [29.116](#) [30.204](#)
[30.503](#) [30.756](#) [30.853](#) [9872-0-00-15-00-00-33-0](#) [996750](#) [1710052](#) [20020316-G071B01LF](#) [20020327-C061B01LF](#) [29590](#) [30.652](#) [30.710](#)
[30.754](#) [30.757](#) [32.058](#) [37.206](#) [37.208](#) [37.507](#) [37.558](#) [38331-5812](#) [38331-8018](#) [38540-1910](#) [39.002](#) [MBE-1517](#) [MBE-153](#)