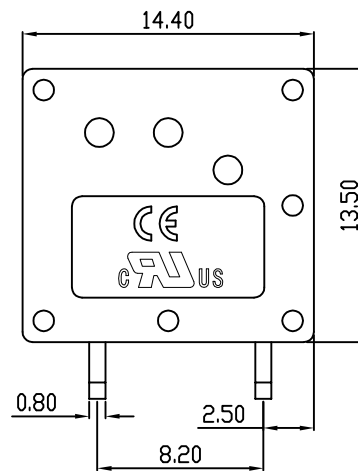
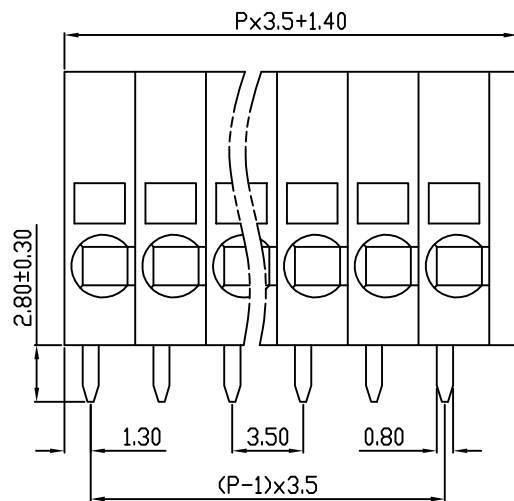
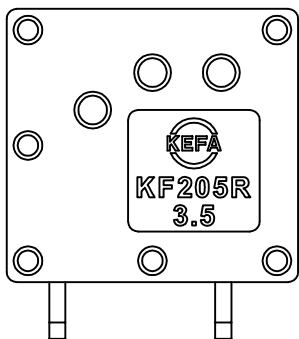
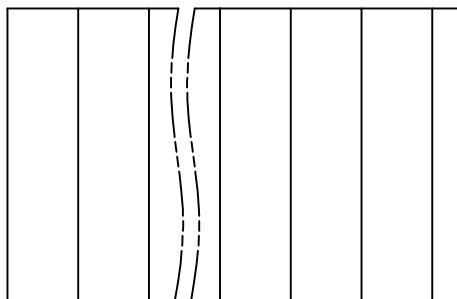
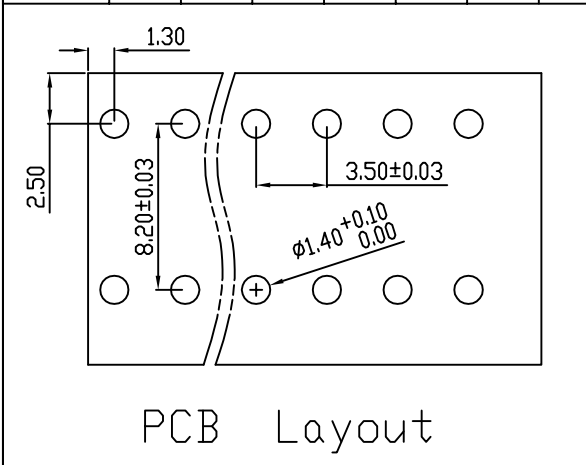


| linear dimension(Tolerances Standard GB/T 14486-2008) |       |         |          |          |           |            |        | —    |      |      |
|---|-------|---------|----------|----------|-----------|------------|--------|------|------|------|
| variable range  | to    | over    | over     | over     | over      | over       | over   | to   | over | over |
|   | 6     | 6 to 10 | 10 to 30 | 30 to 60 | 60 to 100 | 100 to 160 | 160 to |      |      |      |
| tolerance   | ±0.20 | ±0.30   | ±0.50    | ±0.70    | ±1.00     | ±1.30      | ±1.60  | 0.10 | 0.30 | 0.60 |



| REVISION RECORD |             |         |          |          |
|-----------------|-------------|---------|----------|----------|
| REV.            | DESCRIPTION | ECN No. | APPROVED | DATE     |
| A               | 新发行         |         | CLF      | 21.10.20 |
|                 |             |         |          |          |
|                 |             |         |          |          |

| UL/CUL 技术参数           |                                   |                  |         |
|-----------------------|-----------------------------------|------------------|---------|
| UL/CUL Technical Data |                                   |                  |         |
| 等级                    | Use Group                         | B                | C D     |
| 额定电压                  | Rated Voltage [V]                 | 300              | - 300   |
| 额定电流                  | Rated Current [A]                 | 10               | - 10    |
| 接线范围                  | Wire Range                        | 24-16            |         |
| 单/多芯线                 | Solid/Stranded [AWG]              |                  |         |
| 耐电压                   | Withstanding Voltage              | 1600V/1Min       |         |
| IEC 技术参数              |                                   |                  |         |
| IEC Technical Data    |                                   |                  |         |
| 过电压类别                 | Overvoltage Category              | III              | III II  |
| 污染等级                  | Contamination Class               | 3                | 2 2     |
| 额定电压                  | Rated Voltage [V]                 | 160              | 200 400 |
| 额定电流                  | Rated Current [A]                 | 10               | 10 10   |
| 额定冲击电压                | Impulse withstand voltagea [KV]   | 2.5              | 2.5 2.5 |
| 导线截面积                 | Conductor cross section           | 1.5              |         |
| 硬质/柔性导线               | Solid/flexible [mm <sup>2</sup> ] |                  |         |
| 材料                    |                                   |                  |         |
| 绝缘材料                  | Insulation Material               | PA66             |         |
| 阻燃等级                  | Imflamability                     | UL94V-0          |         |
| 导体材料                  | Contactur Material                | 铜合金 Copper alloy |         |
| 导体表面镀层                | Contactive Coating                | 镀锡 Tin Plated    |         |
| 一般参数                  |                                   |                  |         |
| 间距                    | Pitch [mm]                        | 3.5              |         |
| 极数                    | Poles [P]                         | 01~XX            |         |
| 剥线长度                  | Stripping Length [mm]             | 10               |         |
| 螺丝                    | Screw/扭矩 Torque(Max) [N.m]        | -                |         |
| 工作温度                  | Operating temperatur [°C]         | -40~+105         |         |
| 引针尺寸                  | Pin Dimensions [mm]               | 2.80             |         |
| PCB板孔径                | PCB Hole Diameter [mm]            | 1.40             |         |

|      |     |      |          |
|------|-----|------|----------|
| DES. | SJD | DATE | 21.10.20 |
| CHK. | BY  | DATE | 21.10.20 |
| APP. | CLF | DATE | 21.10.20 |

|          |    |         |    |          |     |                             |          |            |
|----------|----|---------|----|----------|-----|-----------------------------|----------|------------|
| 单位/UNITS | mm | 尺寸/SIZE | A4 | 比例/SCALE | 1:1 | 第三视角/THIRD ANGLE PROJECTION | 版本/REV   | A          |
|          |    |         |    |          |     |                             | 名称/TITLE | KF205R-3.5 |



慈溪市科发电子有限公司  
CIXI KEFA ELECTRONIC CO., LTD

## X-ON Electronics

Largest Supplier of Electrical and Electronic Components

*Click to view similar products for [Fixed Terminal Blocks](#) category:*

*Click to view products by [Cixi Kefa](#) manufacturer:*

Other Similar products are found below :

[MBE-1512](#) [MBE-1520](#) [MBE-154](#) [MBE-156](#) [MBES-156](#) [MH-2512](#) [MHE-132](#) [MHE-163](#) [MI-254 \(35\)](#) [MPT-275](#) [ELM10110G](#) [BA311TU](#)  
[BA411SU](#) [MV-254-D](#) [MV-255](#) [MV-493](#) [MVE-252](#) [MVE-253](#) [MVEB-153](#) [1705142](#) [1-796689-8](#) [1841320000](#) [S451](#) [29.007](#) [29.116](#) [30.204](#)  
[30.503](#) [30.756](#) [30.853](#) [9872-0-00-15-00-00-33-0](#) [996750](#) [1710052](#) [20020316-G071B01LF](#) [20020327-C061B01LF](#) [29590](#) [30.652](#) [30.710](#)  
[30.754](#) [30.757](#) [32.058](#) [37.206](#) [37.208](#) [37.507](#) [37.558](#) [38331-5812](#) [38331-8018](#) [38540-1910](#) [39.002](#) [MBE-1517](#) [MBE-153](#)