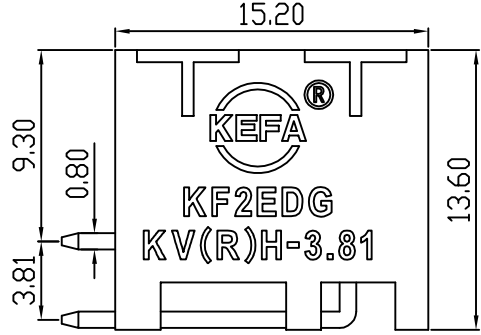
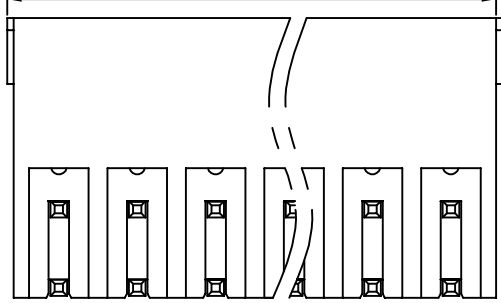
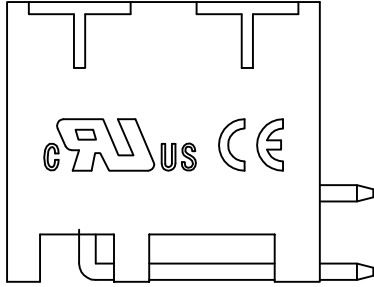
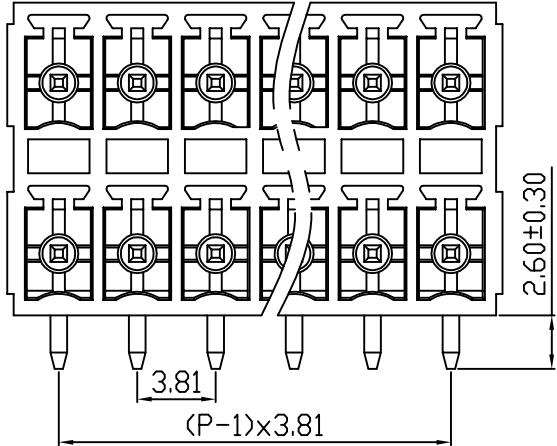
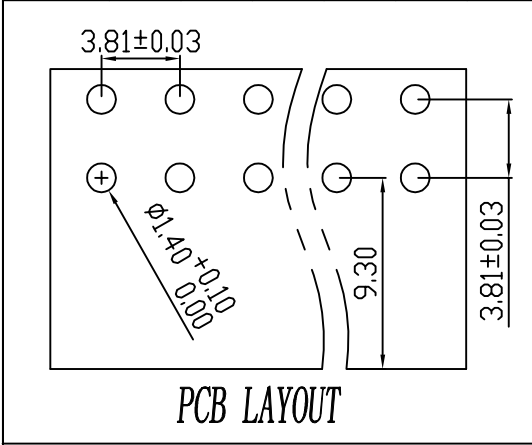


linear dimension(Tolerances Standard GB/T 14486-2008)								—	∇	\perp
variable range	to 6	over 6 to 10	over 10 to 30	over 30 to 60	over 60 to 100	over 100 to 160	over 160 to	to 10	over 10 to 100	over 100 to
tolerance	±0.20	±0.30	±0.50	±0.70	±1.00	±1.30	±1.60	0.10	0.30	0.60

REVISION RECORD				
REV.	DESCRIPTION	ECN No.	APPROVED	DATE
A	新发行		GLF	21.03.13



UL/CUL 技术参数 UL/CUL Technical Data								
等级	Use Group		B	C	D			
额定电压	Rated Voltage [V]		300	-	300			
额定电流	Rated Current [A]		8	-	10			
接线范围	Wire Range							
单/多芯线	Solid/Stranded [AWG]							
耐电压	Withstanding Voltage		1600V/1Min					
IEC 技术参数 IEC Technical Data								
过电压类别	Overvoltage Category		III	III	II			
污染等级	Contamination Class		3	2	2			
额定电压	Rated Voltage [V]		-	160	320			
额定电流	Rated Current [A]		-	7	7			
额定冲击电压	Impulse withstand voltagea [KV]		-	2.5	2.5			
导线截面积	Conductor cross section							
硬质/柔性导线	Solid/flexible [mm²]							
材料 Material								
绝缘材料	Insulation Material		PA66					
阻燃等级	Imflammability		UL94V-0					
导体材料	Contactive Material		铜合金 Copper alloy					
导体表面镀层	Contactive Coating		镀锡 Tin Plated					
一般参数 Other Data								
间距	Pitch [mm]		3.81					
极数	Poles [P]		2x(2-24)					
剥线长度	Stripping Length [mm]							
螺丝	Screw/扭矩 Torque(Max) [N.m]							
工作温度	Operating temperatur [°C]		-40~+105					
引针尺寸	Pin Dimensions [mm]		2.6					
PCB板孔径	PCB Hole Diameter [mm]		1.4					

DES.	FZM	DATE	21.03.13	单位/UNITS	mm	尺寸/SIZE	A4	比例/SCALE	1:1	第三视角/THIRD ANGLE PROJECTION	版本/REV	A
CHK.	SY	DATE	21.03.13	慈溪市科发电子有限公司 CIXI KEFA ELECTRONIC CO., LTD				名称/TITLE	KF2EDGKRH-3.81			
APP.	CLF	DATE	21.03.13									

X-ON Electronics

Largest Supplier of Electrical and Electronic Components

Click to view similar products for [Pluggable Terminal Blocks](#) category:

Click to view products by [Cixi Kefa](#) manufacturer:

Other Similar products are found below :

[57.510.0053](#) [MC 1.5/ 6-ST-3.5 GY AU](#) [ET02015000J0G](#) [860505](#) [860516](#) [860810](#) [GBPACX-12](#) [93.731.4953.0](#) [PV05-5,08-K](#) [PVP03-3,50](#)
[PVS02-5,00](#) [1-1986160-3](#) [1377680000](#) [1531000000](#) [1546228-5](#) [ELFP03110](#) [ELFP10210](#) [ELFT07250](#) [ELVD12100](#) [ELVF09400](#)
[ELVP03100](#) [ELXH071G0E](#) [1700410](#) [1746952](#) [1760336](#) [1800272](#) [1809474](#) [1855000000](#) [19346](#) [1946309](#) [1950227](#) [1973592](#) [19892](#)
[25.320.4053.1](#) [25.320.4553.9](#) [25.320.4753.1](#) [25.320.5453.1](#) [25.340.0353.1](#) [25.340.1053.1](#) [25.345.3553.0M001](#) [25.640.3553.1](#) [SH02-5,08](#)
[SH06-3,81](#) [SH08-5,08](#) [SH08-5,08-K](#) [SH12-5,08](#) [SHS04-5,00](#) [30.303](#) [30.305](#) [30.306](#)