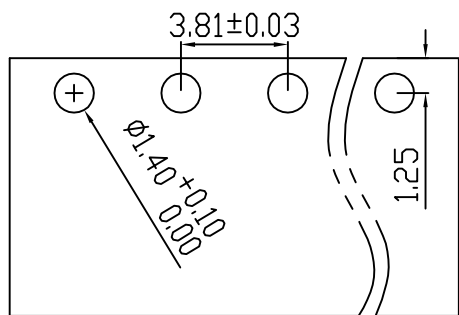


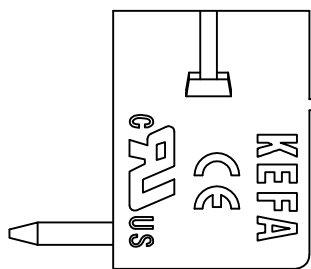
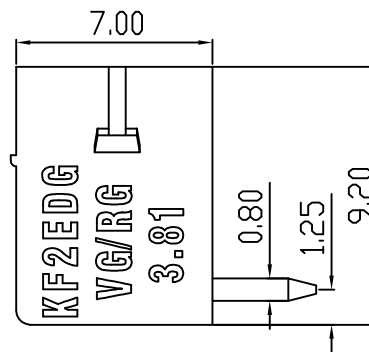
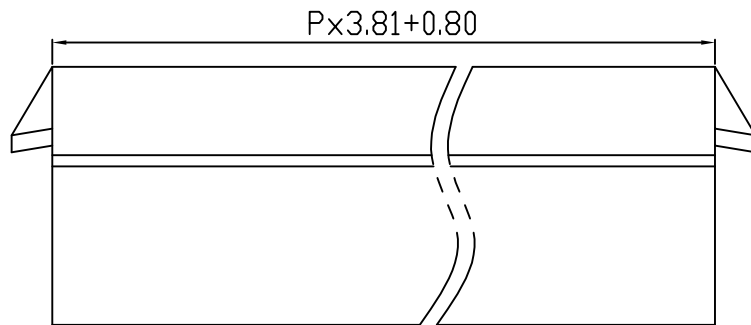
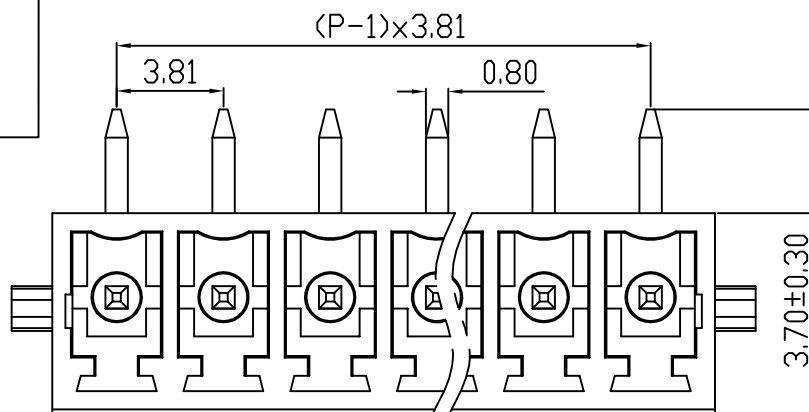
linear dimension(Tolerances Standard GB/T 14486-2008)



| variable range | to 6  | over 6 | over 10 | over 30 | over 60 | over 100 | over 160 | to 10 | over 10 | over 100 |
|----------------|-------|--------|---------|---------|---------|----------|----------|-------|---------|----------|
|                |       | to 10  | to 30   | to 60   | to 100  | to 160   | to 100   |       | to 100  |          |
| tolerance      | ±0.20 | ±0.30  | ±0.50   | ±0.70   | ±1.00   | ±1.30    | ±1.60    | 0.10  | 0.30    | 0.60     |



PCB LAYOUT



REVISION RECORD

| REV. | DESCRIPTION | ECN No. | APPROVED | DATE     |
|------|-------------|---------|----------|----------|
| A    | 新发行         |         | CLF      | 21.03.13 |
|      |             |         |          |          |
|      |             |         |          |          |

|                                      |                                 |                  |     |     |  |  |
|--------------------------------------|---------------------------------|------------------|-----|-----|--|--|
| UL/CUL 技术参数<br>UL/CUL Technical Data |                                 |                  |     |     |  |  |
| 等级                                   | Use Group                       | B                | C   |     |  |  |
| 额定电压                                 | Rated Voltage [V]               | 300              | -   | 300 |  |  |
| 额定电流                                 | Rated Current [A]               | 8                | -   | 10  |  |  |
| 接线范围                                 | Wire Range                      |                  |     |     |  |  |
| 单/多芯线                                | Solid/Stranded [AWG]            | -                |     |     |  |  |
| 耐电压                                  | Withstanding Voltage            | 1600V/1Min       |     |     |  |  |
| IEC 技术参数<br>IEC Technical Data       |                                 |                  |     |     |  |  |
| 过电压类别                                | Overvoltage Category            | III              | III |     |  |  |
| 污染等级                                 | Contamination Class             | 3                | 2   | 2   |  |  |
| 额定电压                                 | Rated Voltage [V]               | -                | 160 | 320 |  |  |
| 额定电流                                 | Rated Current [A]               | -                | 7   | 7   |  |  |
| 额定冲击电压                               | Impulse withstand voltagea [KV] | -                | 2.5 | 2.5 |  |  |
| 导线截面积                                | Conductor cross section         |                  |     |     |  |  |
| 硬质/柔性导线                              | Solid/flexible [mm²]            | -                |     |     |  |  |
| 材料<br>Material                       |                                 |                  |     |     |  |  |
| 绝缘材料                                 | Insulation Material             | PA66             |     |     |  |  |
| 阻燃等级                                 | Imflammability                  | UL94V-0          |     |     |  |  |
| 导体材料                                 | Contacting Material             | 铜合金 Copper alloy |     |     |  |  |
| 导体表面镀层                               | Contactive Coating              | 镀锡 Tin Plated    |     |     |  |  |
| 一般参数<br>Other Data                   |                                 |                  |     |     |  |  |
| 间距                                   | Pitch [mm]                      | 3.81             |     |     |  |  |
| 极数                                   | Poles [P]                       | 2-24             |     |     |  |  |
| 剥线长度                                 | Stripping Length [mm]           | -                |     |     |  |  |
| 螺丝                                   | Screw/扭矩 Torque(Max) [N.m]      | -                |     |     |  |  |
| 工作温度                                 | Operating temperatur [°C]       | -40~+105         |     |     |  |  |
| 引针尺寸                                 | Pin Dimensions [mm]             | 3.7              |     |     |  |  |
| PCB板孔径                               | PCB Hole Diameter [mm]          | 1.4              |     |     |  |  |

|      |     |      |          |
|------|-----|------|----------|
| DES. | GYF | DATE | 21.03.13 |
| CHK. | SY  | DATE | 21.03.13 |
| APP. | CLF | DATE | 21.03.13 |

|  |    |         |    |          |     |
|--|----|---------|----|----------|-----|
| 单位/UNITS                                     | mm | 尺寸/SIZE | A4 | 比例/SCALE | 1:1 |
| 慈溪市科发电子有限公司<br>CIXI KEFA ELECTRONIC CO., LTD |    |         |    |          |     |

|                             |        |               |
|-----------------------------|--------|---------------|
| 第三视角/THIRD ANGLE PROJECTION | 版本/REV | A             |
| 名称/TITLE                    |        | KF2EDGRG-3.81 |

## X-ON Electronics

Largest Supplier of Electrical and Electronic Components

*Click to view similar products for [Pluggable Terminal Blocks](#) category:*

*Click to view products by [Cixi Kefa](#) manufacturer:*

Other Similar products are found below :

[57.510.0053](#) [721-104/026-047](#) [721-204/026-045](#) [MC 1.5/ 6-ST-3.5 GY AU](#) [ET02015000J0G](#) [860505](#) [860516](#) [860810](#) [GBPACX-12](#)  
[93.731.4953.0](#) [PVP03-3,50](#) [PVS02-5,00](#) [1-1986160-3](#) [1377680000](#) [1531000000](#) [1546228-5](#) [ELFP03110](#) [ELFP10210](#) [ELFT07250](#)  
[ELVD12100](#) [ELVF09400](#) [ELXH071G0E](#) [1725220000](#) [1760336](#) [1855000000](#) [19346](#) [1946309](#) [1973592](#) [19892](#) [25.320.4053.1](#) [25.320.4553.9](#)  
[25.320.4753.1](#) [25.320.5453.1](#) [25.340.0353.1](#) [25.340.1053.1](#) [25.345.3553.0M001](#) [25.640.3553.1](#) [SH02-5,08](#) [SH06-3,81](#) [SH08-5,08](#) [SH08-](#)  
[5,08-K](#) [SH12-5,08](#) [SHS04-5,00](#) [30.303](#) [30.305](#) [30.306](#) [PHP09-5,08](#) [25.193.0453.0](#) [25.320.4653.1](#) [25.332.2453.1](#)