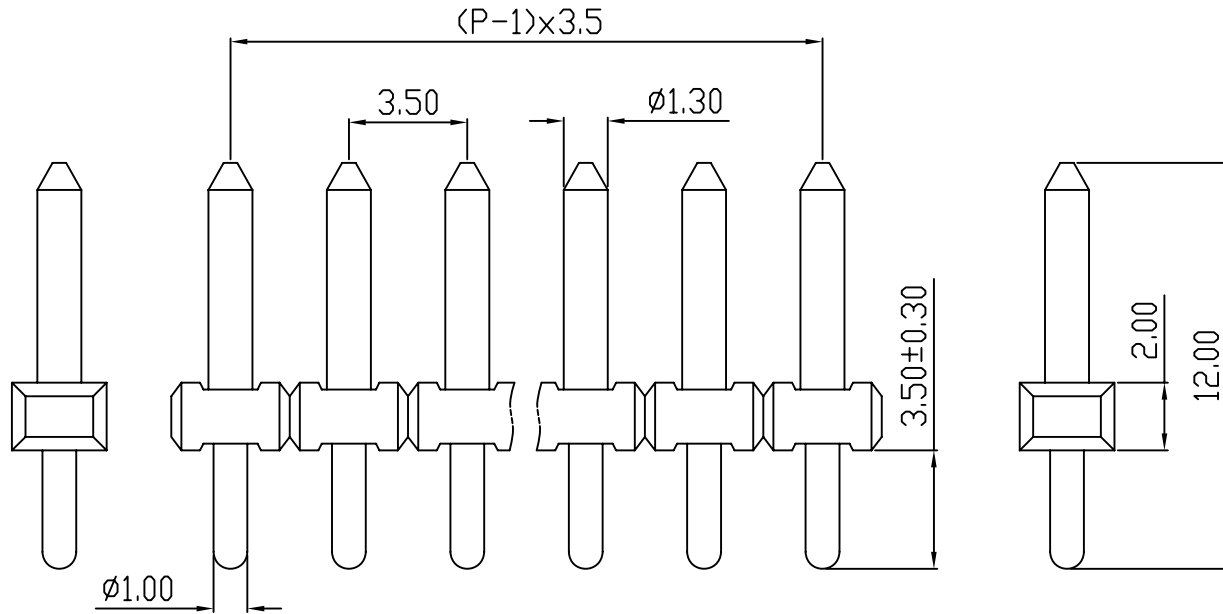
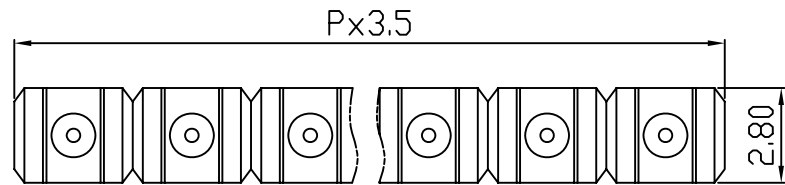
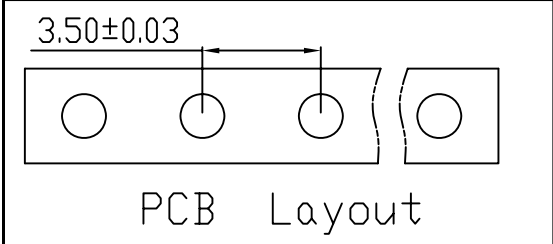


linear dimension(Tolerances Standard GB/T 14486-2008)								—	$\square$	$\perp$
variable range	to 6	over 6 to 10	over 10 to 30	over 30 to 60	over 60 to 100	over 100 to 160	over 160 to	to 10	over 10 to 100	over 100 to
tolerance	±0.20	±0.30	±0.50	±0.70	±1.00	±1.30	±1.60	0.10	0.30	0.60

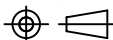


REVISION RECORD				
REV.	DESCRIPTION	ECN No.	APPROVED	DATE
A	新发行		CLF	21.09.19

UL/CUL 技术参数 UL/CUL Technical Data					
等级	Use Group		B	C	D
额定电压	Rated Voltage	[V]	300	-	300
额定电流	Rated Current	[A]	8	-	10
接线范围	Wire Range				
单/多芯线	Solid/Stranded	[AWG]	-		
耐电压	Withstanding Voltage		1600V/1Min		
IEC 技术参数 IEC Technical Data					
过电压类别	Overvoltage Category		III	III	II
污染等级	Contamination Class		3	2	2
额定电压	Rated Voltage	[V]	160	200	400
额定电流	Rated Current	[A]	10	10	10
额定冲击电压	Impulse withstand voltage	[KV]	2.5	2.5	4.0
导线截面积	Conductor cross section		-		
硬质/柔性导线	Solid/flexible	[mm <sup>2</sup> ]	-		
材料					
绝缘材料	Insulation Material		PBT		
阻燃等级	Imflammability		UL94V-0/UL94V-2		
导体材料	Contact Material		铜合金 Copper alloy		
导体表面镀层	Contactive Coating		镀锡 Tin Plated		
一般参数					
间距	Pitch	[mm]	3.5		
极数	Poles	[P]	2-24		
剥线长度	Stripping Length	[mm]	-		
螺丝	Screw/扭矩	Torque(Max) [N.m]	-		
工作温度	Operating temperatur	[°C]	-30~+120		
引脚尺寸	Pin Dimensions	[mm]	3.5		
PCB板孔径	PCB Hole Diameter	[mm]	1.2		

DES.	LQQ	DATE	21.09.19
CHK.	BY	DATE	21.09.19
APP.	CLF	DATE	21.09.19

单位/UNITS	mm	尺寸/SIZE	A4	比例/SCALE	1:1
 慈溪市科发电子有限公司 CIXI KEFA ELECTRONIC CO., LTD					

第三视角/THIRD ANGLE PROJECTION		版本/REV	A
		名称/TITLE	KF332J-3.5

## X-ON Electronics

Largest Supplier of Electrical and Electronic Components

*Click to view similar products for [Headers & Wire Housings](#) category:*

*Click to view products by [Cixi Kefa](#) manufacturer:*

Other Similar products are found below :

[0015917161](#) [0022155065](#) [57102-F02-18ULF](#) [58102-G61-06LF](#) [582553-1](#) [01.001.5753.1](#) [0050291907](#) [02.125.8002.8](#) [609-3404](#) [61062-3](#)  
[CSU011177004](#) [622-0430](#) [622-3653LF](#) [63453-116](#) [636-1030](#) [636-1427](#) [636-3427](#) [636-4007](#) [641938-9](#) [65495-038](#) [65692-001LF](#) [65781-018](#)  
[65781-047](#) [65817-010LF](#) [65817-015LF](#) [67095-007LF](#) [67601157](#) [68631-112](#) [68645-018](#) [699319-000](#) [70.362.1628.0](#) [70-4210](#) [70-4226B](#) [70-](#)  
[4853B](#) [71.350.2428.0](#) [733-134](#) [733-162](#) [760-3052](#) [MHR-64-VUAL](#) [80.063.4001.1](#) [800-90-001-10-001000](#) [801-43-002-10-013000](#)  
[801-43-006-10-002000](#) [803-43-024-10-001000](#) [803-93-012-10-001000](#) [8-1437020-4](#) [819-22-004-30-001101](#) [820-22-006-30-001101](#)  
[820-22-008-30-001101](#) [821-22-002-10-001101](#)