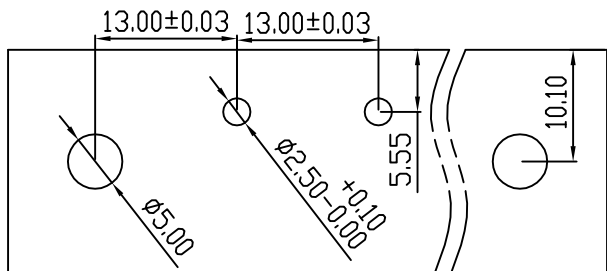
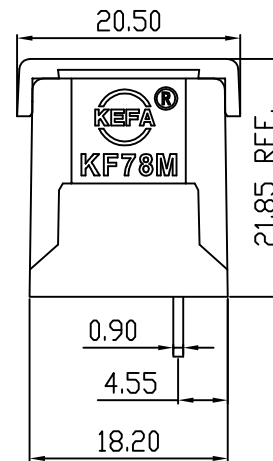
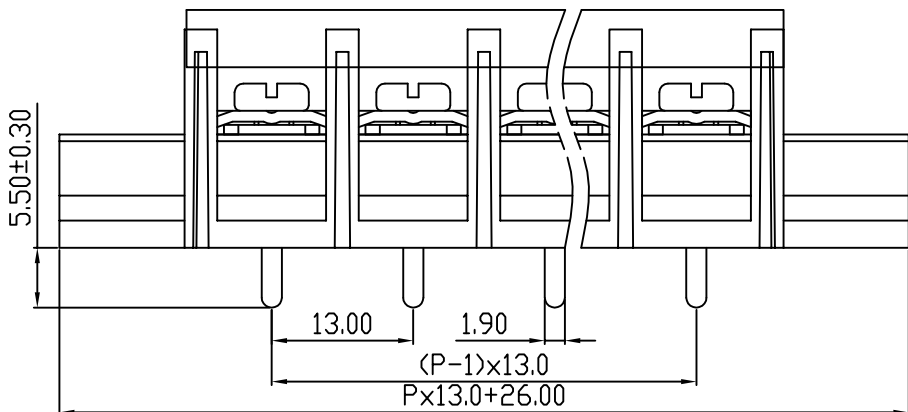
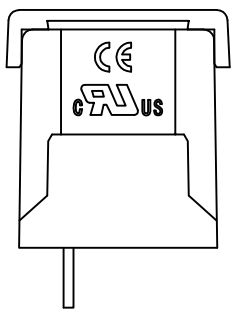
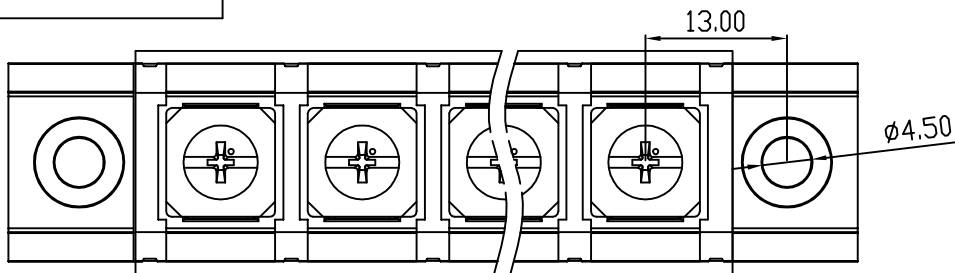


linear dimension(Tolerances Standard GB/T 14486-2008)								—	∇	\perp
variable range	to	over 6 to 10	over 10 to 30	over 30 to 60	over 60 to 100	over 100 to 160	over 160 to	to	over 10 to 100	over 100 to
tolerance	± 0.20	± 0.30	± 0.50	± 0.70	± 1.00	± 1.30	± 1.60	0.10	0.30	0.60



PCB LAYOUT



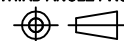
REVISION RECORD				
REV.	DESCRIPTION	ECN No.	APPROVED	DATE
A	新发行		CLF	21.12.10

UL/CUL 技术参数					
UL/CUL Technical Data					
等级	Use Group		B	C	D
额定电压	Rated Voltage	[V]	600	-	-
额定电流	Rated Current	[A]	30	-	-
接线范围	Wire Range		18-10		
单/多芯线	Solid/Stranded	[AWG]			
IEC 技术参数					
IEC Technical Data					
额定电压	Rated Voltage	[V]	750		
额定电流	Rated Current	[A]	40		
耐电压	Withstanding Voltage		3000V/1Min		
导线截面积	Conductor cross section		6.0		
硬质/柔性导线	Solid/flexible	[mm ²]			
材料					
绝缘材料	Insulation Material		PA66		
阻燃等级	Imflammability		UL94V-0		
导体材料	Contactur Material		铜合金 Copper alloy		
导体表面镀层	Contactive Coating		镀锡 Tin plated		
一般参数					
间距	Pitch	[mm]	13.0		
极数	Poles	[P]	02-24		
剥线长度	Stripping Length	[mm]	-		
螺丝	Screw/扭矩 Torque(Max)	[N.m]	M4/1.2		
工作温度	Operating temperatur	[°C]	-40~-105		
引针尺寸	Pin Dimensions	[mm]	5.5		
PCB板孔径	PCB Hole Diameter	[mm]	2.5		

DES.	LQQ	DATE	21.12.10	单位/UNITS	mm	尺寸/SIZE	A4	比例/SCALE	1:1	第三视角/THIRD ANGLE PROJECTION	版本/REV	A
CHK.	BY	DATE	21.12.10							名称/TITLE	KF78SM-13.0	
APP.	CLF	DATE	21.12.10									



慈溪市科发电子有限公司
CIXI KEFA ELECTRONIC CO., LTD



X-ON Electronics

Largest Supplier of Electrical and Electronic Components

Click to view similar products for [Barrier Terminal Blocks](#) category:

Click to view products by [Cixi Kefa](#) manufacturer:

Other Similar products are found below :

[CR151D20104](#) [670A-RZ-15-KT20](#) [6C1N03](#) [6PCR-02](#) [6PCR-02-008](#) [6PCR-05-008](#) [6PCR-08-008](#) [6PCR-09-008](#) [6PCR-13-006](#) [6PCR-15-006](#) [6PCV-06-008](#) [6PCV-06-716](#) [6PCV-09-001](#) [6PCV-15-008](#) [6PCV-17-1206](#) [6PCV-20-323](#) [6STR-06-006](#) [6STR-08-006](#) [6STR-12-008](#) [6STR-13-006](#) [6STR-14-008](#) [6STR-16-008](#) [6STR-17-008](#) [6STR-21-008](#) [6STR-25-008](#) [6STR-27-008](#) [6STV-03-008](#) [6STV-09-006](#) [6STV-10-006](#) [6WWV-11-008](#) [6WWV-12-008](#) [6WWV-16-008](#) [71502-50](#) [71507-47-50](#) [72504-C-50](#) [72506-C](#) [72507-C-50](#) [72508-56](#) [73203](#) [75505-C-50](#) [812-GP-3/4ST-09](#) [812-GPZ-03PSB](#) [8-1437402-5](#) [8-1437402-7](#) [8PCR-06-006](#) [8PCR-11-006](#) [8PCV-04-001](#) [8PCV-05-008](#) [8PCV-09-006](#) [8PCV-15-006](#)