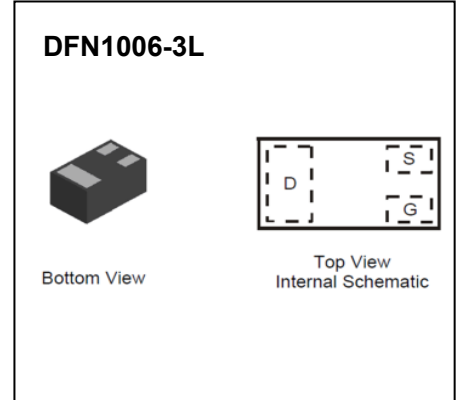


DFN1006-3L Plastic-Encapsulate MOSFETs

CJBA7002K N-Channel MOSFET

$V_{(BR)DSS}$	$R_{DS(on)MAX}$	I_D
60V	1.5Ω@10V	0.41A
	1.8Ω@4.5V	



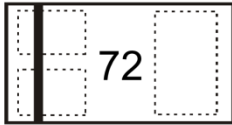
FEATURE

- Low On-Resistance
- Low Threshold Voltage
- Fast Switching Speed
- ESD Protected Gate

APPLICATION

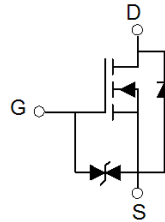
- Load Switch
- Portable Applications
- Power Management Functions

MARKING:



Top View
Bar Denotes Gate
and Source Side

Equivalent Circuit



ABSOLUTE MAXIMUM RATINGS ($T_a=25^\circ\text{C}$ unless otherwise noted)

Parameter	Symbol	Value	Unit
Drain-Source Voltage	V_{DS}	60	V
Gate-Source Voltage	V_{GS}	±20	V
Continuous Drain Current	I_D	$T_a=25^\circ\text{C}$	0.41
		$T_a=85^\circ\text{C}$	0.30
Pulsed Drain Current	I_{DM}	1.2	A
Power Dissipation	P_D	0.1	W
Thermal Resistance from Junction to Ambient	$R_{\theta JA}$	1250	$^\circ\text{C/W}$
Storage Temperature	T_{STG}	-55~ +150	$^\circ\text{C}$

MOSFET ELECTRICAL CHARACTERISTICS

MOSFET ELECTRICAL CHARACTERISTICS($T_a=25^{\circ}\text{C}$ unless otherwise noted)

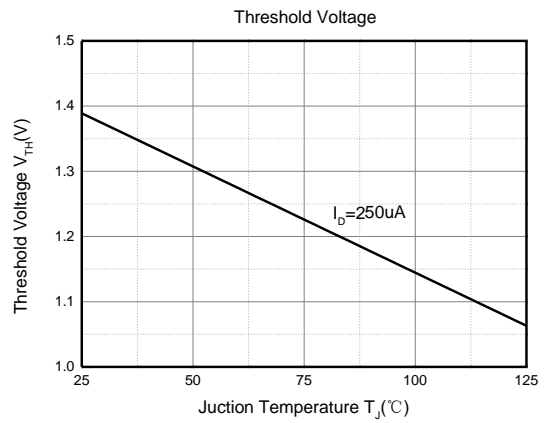
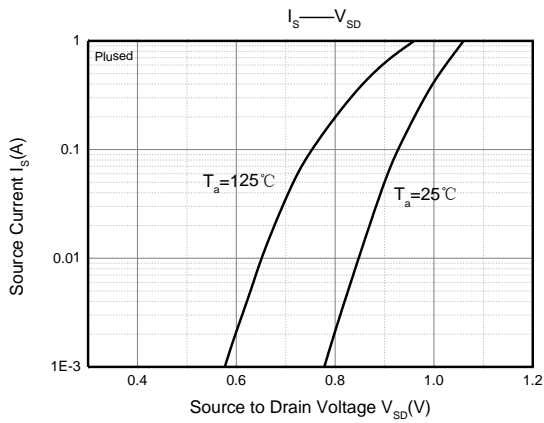
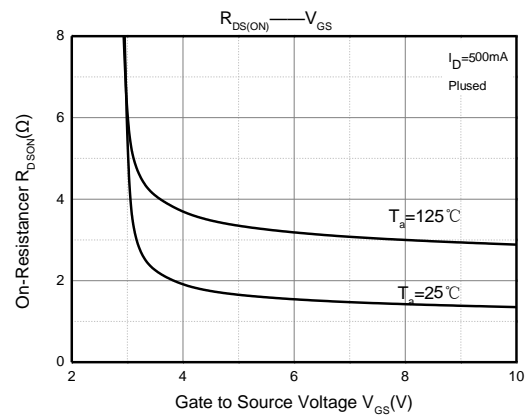
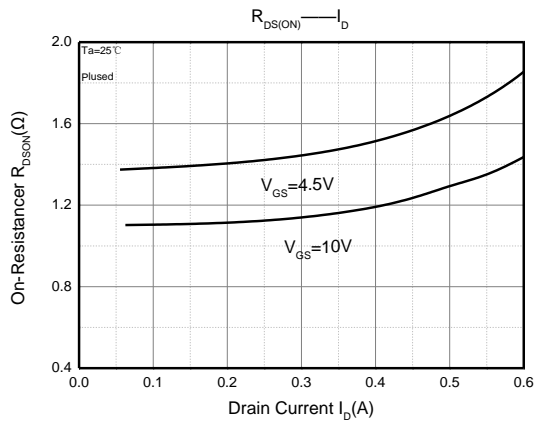
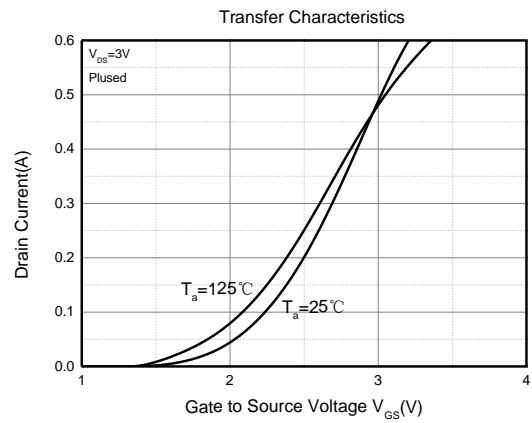
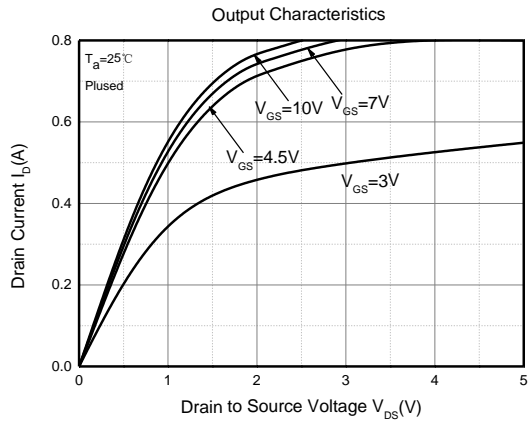
Parameter	Symbol	Test Condition	Min	Type	Max	Unit
Static Characteristics						
Drain-source breakdown voltage	$V_{(BR)DSS}$	$V_{GS} = 0V, I_D = 250\mu A$	60			V
Zero gate voltage drain current	I_{DSS}	$V_{DS} = 60V, V_{GS} = 0V$			100	nA
Gate-body leakage current	I_{GSS}	$V_{GS} = \pm 20V, V_{DS} = 0V$			± 10	μA
		$V_{GS} = \pm 5V, V_{DS} = 0V$			± 1	
Gate threshold voltage	$V_{GS(th)}$	$V_{DS} = V_{GS}, I_D = 250\mu A$	1.3	1.4	2.3	V
Drain-source on-resistance ^a	$R_{DS(on)}$	$V_{GS} = 10V, I_D = 40mA$		1.2	1.5	Ω
		$V_{GS} = 4.5V, I_D = 35mA$		1.3	1.8	
Forward transconductance ^a	g_{fs}	$V_{DS} = 5V, I_D = 40mA$	100			mS
Diode forward voltage	V_{SD}	$V_{DS} = 0V, I_S = 300mA$		0.84	1.1	V
Dynamic characteristics						
Input Capacitance ^b	C_{iss}	$V_{DS} = 40V, V_{GS} = 0V, f = 1MHz$		41	80	μF
Output Capacitance ^b	C_{oss}			3.6	7	
Reverse Transfer Capacitance ^b	C_{rss}			2.9	5.6	
Gate resistance	R_g	$V_{DS} = 0V, V_{GS} = 0V, f = 1MHz$		81	200	Ω
Total Gate Charge	Q_g	$V_{GS} = 4.5V$	$V_{DS} = 50V, I_D = 1A$	0.72	1.5	nC
Gate-Source Charge	Q_{gs}	$V_{GS} = 10V$		1.41	2.8	
Gate-Drain Charge	Q_{gd}			0.24	0.4	
Turn-on delay time ^b	$t_{d(on)}$				0.24	
Turn-on rise time ^b	t_r	$V_{DS} = 50V, I_D = 1A,$ $V_{GS} = 10V, R_G = 6\Omega$		3.98	10	ns
Turn-off delay time ^b	$t_{d(off)}$			4.95	10	
Turn-off fall time ^b	t_f			18.52	40	
				11.94	25	

Notes:

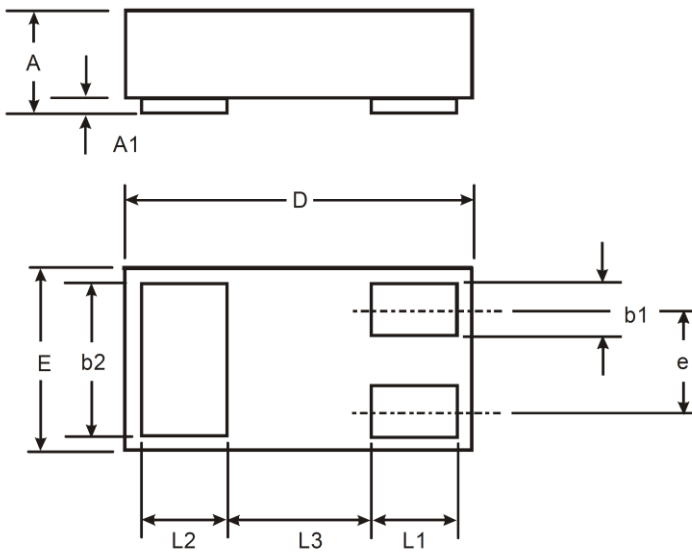
a. Pulse Test : Pulse width $\leq 300\mu s$, duty cycle $\leq 2\%$.

b. These parameters have no way to verify.

Typical Characteristics



DFN1006-3L Package Outline Dimensions



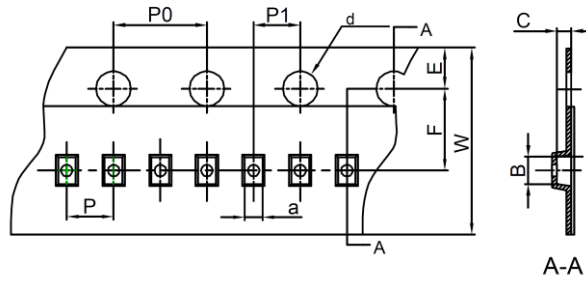
X1-DFN1006-3			
Dim	Min	Max	Typ
A	0.47	0.53	0.50
A1	0	0.05	0.03
b1	0.10	0.20	0.15
b2	0.45	0.55	0.50
D	0.95	1.075	1.00
E	0.55	0.675	0.60
e	—	—	0.35
L1	0.20	0.30	0.25
L2	0.20	0.30	0.25
L3	—	—	0.40
All Dimensions in mm			

NOTICE

JSCJ reserves the right to make modifications, enhancements, improvements, corrections or other changes without further notice to any product herein. JSCJ does not assume any liability arising out of the application or use of any product described herein.

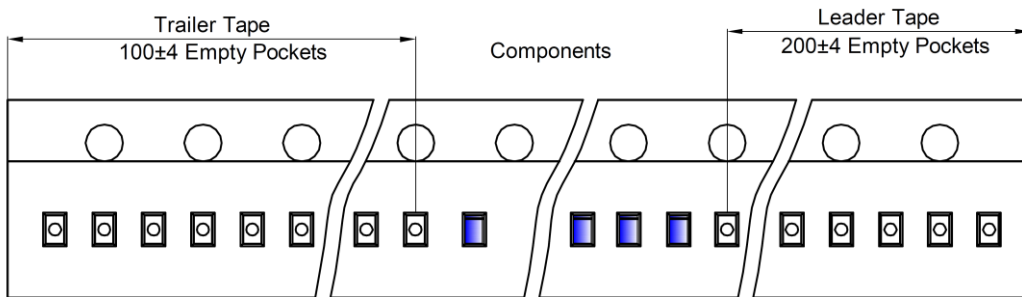
DFN1006-3L Tape and Reel

DFN1006-3L Embossed Carrier Tape

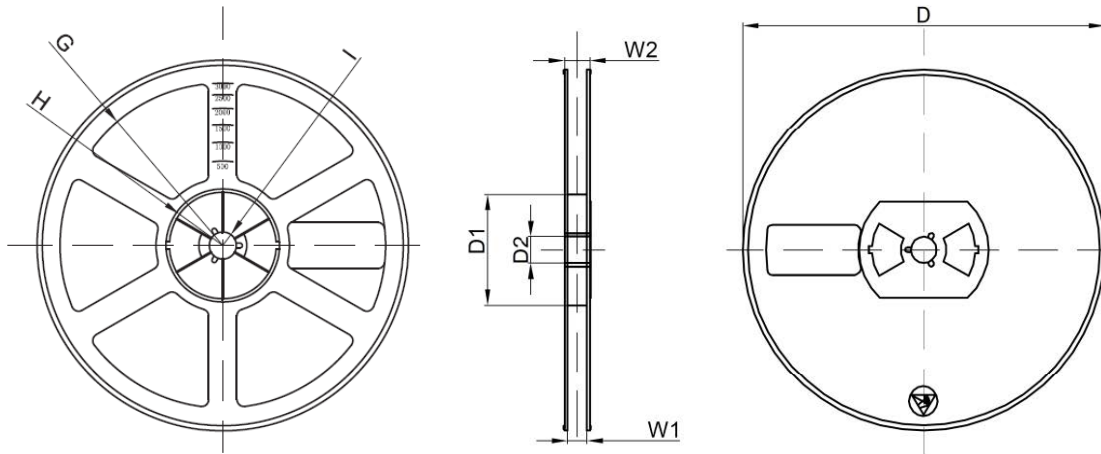


Dimensions are in millimeter										
Pkg type	a	B	C	d	E	F	P0	P	P1	W
DFN1006-3L	0.66	1.15	0.66	Ø1.50	1.75	3.50	4.00	2.00	2.00	8.00

DFN1006-3L Tape Leader and Trailer



DFN1006-3L Reel



Dimensions are in millimeter								
Reel Option	D	D1	D2	G	H	I	W1	W2
7" Dia	Ø178.00	54.40	13.00	R78.00	R25.60	R6.50	9.50	12.30

REEL	Reel Size	Box	Box Size(mm)	Carton	Carton Size(mm)	G.W.(kg)
10000 pcs	7 inch	100,000 pcs	203×203×195	400,000 pcs	438×438×220	

X-ON Electronics

Largest Supplier of Electrical and Electronic Components

Click to view similar products for [MOSFET](#) category:

Click to view products by [CJ](#) manufacturer:

Other Similar products are found below :

[614233C](#) [648584F](#) [MCH3443-TL-E](#) [MCH6422-TL-E](#) [FDPF9N50NZ](#) [FW216A-TL-2W](#) [FW231A-TL-E](#) [APT5010JVR](#) [NTNS3A92PZT5G](#)
[IRF100S201](#) [JANTX2N5237](#) [2SK2464-TL-E](#) [2SK3818-DL-E](#) [FCA20N60_F109](#) [FDZ595PZ](#) [STD6600NT4G](#) [FSS804-TL-E](#) [2SJ277-DL-E](#)
[2SK1691-DL-E](#) [2SK2545\(Q,T\)](#) [D2294UK](#) [405094E](#) [423220D](#) [MCH6646-TL-E](#) [TPCC8103,L1Q\(CM](#) [367-8430-0972-503](#) [VN1206L](#)
[424134F](#) [026935X](#) [051075F](#) [SBVS138LT1G](#) [614234A](#) [715780A](#) [NTNS3166NZT5G](#) [751625C](#) [873612G](#) [IRF7380TRHR](#)
[IPS70R2K0CEAKMA1](#) [RJK60S3DPP-E0#T2](#) [RJK60S5DPK-M0#T0](#) [APT5010JVFR](#) [APT12031JFLL](#) [APT12040JVR](#) [DMN3404LQ-7](#)
[NTE6400](#) [JANTX2N6796U](#) [JANTX2N6784U](#) [JANTXV2N5416U4](#) [SQM110N05-06L-GE3](#) [SIHF35N60E-GE3](#)