

1

Pushbutton, opaque, mounting hole diameter 18.2 mm, 250 V/2 A



Pict.: green

Mounting hole

Technical data

General information

Form of lens protruding lens
 Colour of lens see order block
 Form of collar round

Dimensions

Diameter of collar 22 mm
 Overall height 10.5 mm
 Mounting depth 34 mm
 Mounting hole 18.2 mm

Mechanical design

Mounting ring nut
 Terminals see order block
 Contact system sliding bridge contact
 Contact function momentary
 Contact arrangement see order block
 Contact materials Ag
 Illuminability no
 Lamp socket no

Mechanical characteristics

Operating force max. 9.5 N
 Operating travel 5 mm
 Switching travel NC 2.1 mm
 Switching travel NO 3.7 mm
 Robustness min. 100 N

Electrical characteristics

Rated voltage AC max. 250 V
 Rated current max. 2 A
 Contact resistance acc. to life max. 200 mΩ

Other specifications

Operating life 50000
 Degree of protection from front side IP40 (IP65 with sealing cap)
 Ambient temp. operating min. -25 °C
 Ambient temp. operating max. +85 °C
 Storage temperature min. -40 °C
 Storage temperature max. +90 °C
 Resistance to constant environment according to IEC 600 68-2-3 and 2-30
 Resistance at variable environment according to IEC 600 68-2-14 and 2-33
 Weight 14 g
 Flame class acc. to UL 94 V 0
 Hot wire ignition acc. to IEC 60695-2-1 yes

Other Pushb.

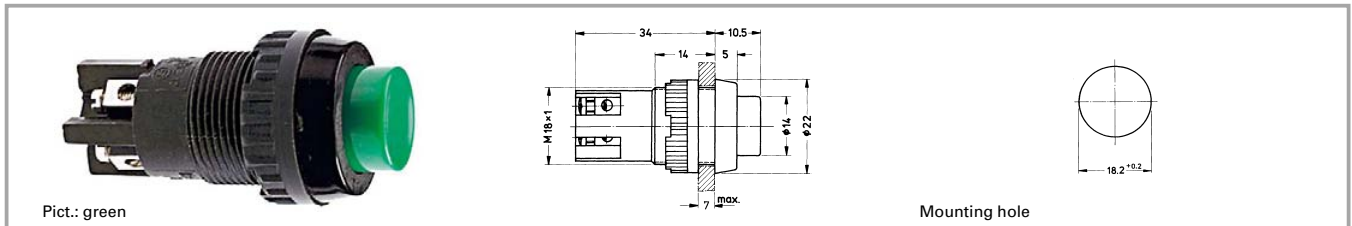
Accessories Pushbutton, opaque, mounting hole diameter 18.2 mm, 250 V/2 A

| Description | Photo | Order no. | Page |
|---------------------------------|-------|--------------------------|------|
| Neoprene sealing cap, black | | 5.52.008.061/0100 | |
| Neoprene sealing cap, red | | 5.52.008.061/0300 | |
| Neoprene sealing cap, green | | 5.52.008.061/0500 | |
| Protective sleeve for terminals | | 5.52.011.028/0100 | |

Accessories Pushbutton, opaque, mounting hole diameter 18.2 mm, 250 V/2 A

| Description | Photo | Order no. | Page |
|---------------------------|--|--------------------------|--------|
| Fixing spanner M 18, M 19 |  | 5.58.002.017/0105 | 5 - 23 |

Pushbutton, opaque, mounting hole diameter 18.2 mm, 250 V/2 A



| Contact arrangement | Contact function | Illuminability | Terminals | Colour of lens | Order no. |
|---------------------|------------------|----------------|-----------------|----------------|--------------------------|
| 2 NO | momentary | no | screw terminals | opaque black | 1.01.102.001/0104 |
| 2 NO | momentary | no | screw terminals | opaque red | 1.01.102.001/0301 |
| 2 NO | momentary | no | screw terminals | opaque green | 1.01.102.001/0507 |
| 1 NC + 1 NO | momentary | no | screw terminals | opaque black | 1.01.102.011/0104 |
| 1 NC + 1 NO | momentary | no | screw terminals | opaque white | 1.01.102.011/0205 |
| 1 NC + 1 NO | momentary | no | screw terminals | opaque red | 1.01.102.011/0301 |
| 1 NC + 1 NO | momentary | no | screw terminals | opaque green | 1.01.102.011/0507 |

Technical data see page 1 - 82

X-ON Electronics

Largest Supplier of Electrical and Electronic Components

Click to view similar products for [Pushbutton Switches](#) category:

Click to view products by [C&K](#) manufacturer:

Other Similar products are found below :

[8940K2012](#) [LW1L-M1C10V-A](#) [LW1L-M1C70-A](#) [LW2L-A1C20M-GD](#) [LW2L-M1C20M-A](#) [60324L](#) [M22-D-R-GB0/K11](#) [M7E-HRN2](#)
[67021K512](#) [67081K512X](#) [701PB580](#) [7199K101](#) [810K12910](#) [810KSV30B](#) [MML21EA2ADK](#) [MML21KA3ABK](#) [MML23KA3AC05K-001](#)
[MML23KW3AA01W](#) [8418K2](#) [8442K3](#) [8450K1](#) [860K11911T01A](#) [861901](#) [861K11911T01A07](#) [861K13810T00A14](#) [861K13911](#)
[8646AB6X718UL](#) [8646ABUL](#) [9001KXRK](#) [907AYY100](#) [PMHD155A1](#) [9533CD4+U574+U4922](#) [95-414.000](#) [99-450.837](#) [99-453.837](#)
[PV3H2B0NN-341](#) [1203MRA](#) [A22NZBGANGA](#) [A22NZBNANGA](#) [A22NZMPATRA](#) [A2PMA1X03EC56](#) [A3A-5123-02](#) [A3A-7140](#) [A3A-7310](#) [A3A-7340](#) [A3U-TMW-A2C-5M](#) [A595](#) [12037A2ULCSA](#) [ABD122N-B](#) [1211390004](#)