

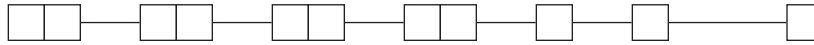


F Series Pushbutton Switches

Pushbutton

A

European Order Code - Switch Only



Designation

SF F Series
ZF Central mounted F series

Contact Arrangement

2U 2PDT
4U 4PDT
6U 6PDT
8U 8PDT

Mechanical Function

OA Momentary
EE Alternate (push-push)
GR Interlock

Terminal Style

(NONE) Solder lugs & PC pins

LB Cut solder lugs
PB Cut PC pins, for other configurations, consult factory

Electrical Function

(NONE) BBM

Contact Material

(NONE) Silver, AG
P Gold

Dress nut*

*Central mounted F series only

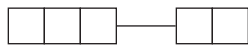
(NONE) No dress nut

B Black
C Chrome

*Minimum order quantities apply.

Order Code - Buttons

Solid Buttons



Style

F01 FMR
F02 FG*
F12 FSC
F13 FSD
F14 FU12
F15 FSB
F16 FE
F19 FA
F21 F001

Button Color

01 Black
02 White
03 Red
04 Light gray

Mechanical Indicator Buttons



Style

F01 FA100
F02 FA101
F07 FA120
F08 FA201
F11 FA200*

Shell Color

01 Black

Out Position Color

01 Black

In Position Color

02 White
06 Yellow
07 Blue
08 Green
12 Orange

*Button options for central mounting configurations, use 'FG' for central mount with chrome dress nut, use 'FA200' for central mount with black dress nut.

BUTTON REMOVAL

A button of a push-push switch should only be removed in the "OFF" non-latching position.

Order Code - Chassis

To order a switch with chassis, create the switch part number listed above and add the Chassis part number configurator information at the end of the part number.

Note: We do not guarantee or recommend interlocking beyond 10 stations.



No. of Stations

01 thru 23 Comes with standard .094 (2,4mm) mounting holes
Note: Single station chassis available with special mounting configurations, consult factory.

Spacing between Stations

00 Single station
10 10mm
12.5 12.5mm
15 15mm
17.5 17.5mm
20 20mm

Special Acknowledgements

See note

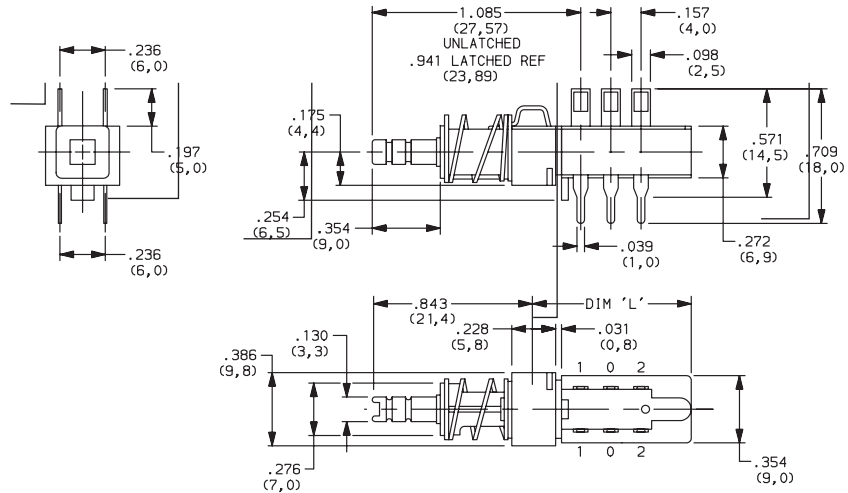
*Minimum order quantities apply.



SWITCHES WITH STANDARD OPTIONS

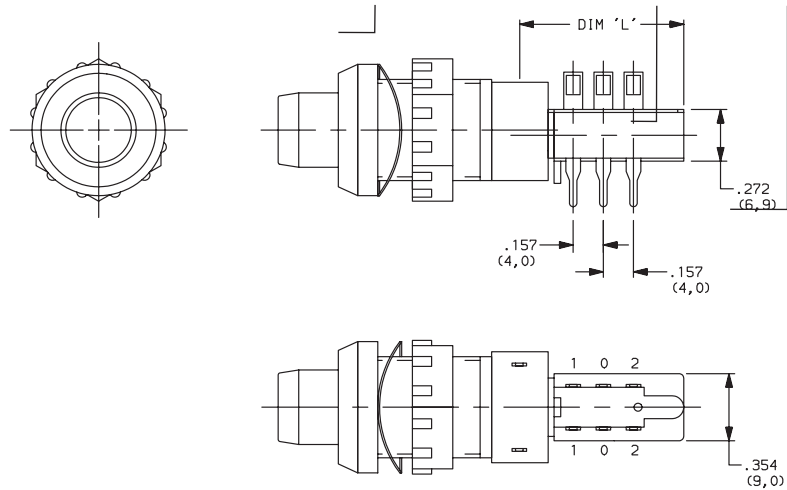
F2UEE

| CONTACT ARRANGEMENT | LENGTH DIM 'L' |
|---------------------|----------------|
| 2U | 0.827 (21,00) |
| 4U | 1.300 (33,00) |
| 6U | 1.770 (45,00) |
| 8U | 2.240 (57,00) |
| 10U | 2.720 (69,00) |



ZF2UEEBF11010108

| CONTACT ARRANGEMENT | LENGTH DIM 'L' |
|---------------------|----------------|
| 2U | 0.827 (21,00) |
| 4U | 1.300 (33,00) |
| 6U | 1.770 (45,00) |
| 8U | 2.240 (57,00) |
| 10U | 2.720 (69,00) |



DESIGNATION

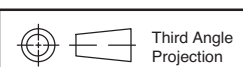


Designation, North America

- F** F Series
- FLT** Light touch F series
- ZF** Central mounted F series

Designation, Europe

- SF** F Series
- ZF** Central mounted F series

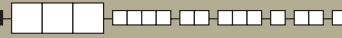


Third Angle Projection
Dimensions are shown: Inches (mm)
Specifications and dimensions subject to change



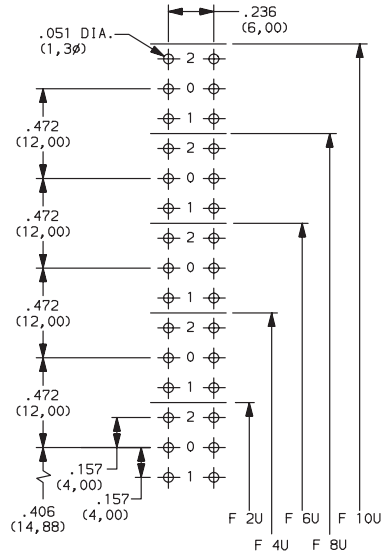
F Series Pushbutton Switches

CONTACT ARRANGEMENT



| OPTION CODE | NO. OF POLES | SCHEMATIC |
|-------------|--------------|-----------|
| 2U | 2PDT | |
| 4U | 4PDT | 2X |
| 6U | 6PDT | 3X |
| 8U | 8PDT | 4X |
| 10U | 10PDT | 5X |

PC MOUNTING



MECHANICAL FUNCTION



North America

| OPTION CODE | FUNCTION |
|-------------|------------------------|
| OA | Momentary |
| EE | Alternate (push-push) |
| GR | Interlock |
| AOR | Central release |
| OASP | Momentary with lockout |
| GRSP | Interlock with lockout |

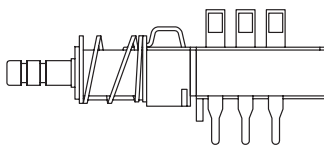
Europe

| OPTION CODE | FUNCTION |
|-------------|-----------------------|
| OA | Momentary |
| EE | Alternate (push-push) |
| GR | Interlock |

TERMINAL SEALING

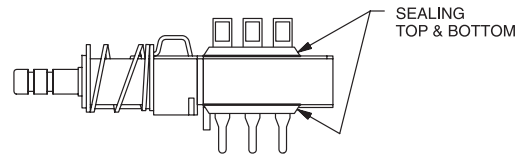


(NONE) NO SEAL



F2UEE shown in example above.

TB TOP & BOTTOM



NOTE: Available for North America only



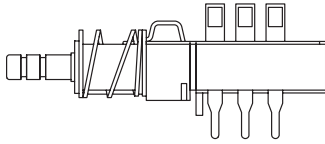
Dimensions are shown: Inches (mm)
Specifications and dimensions subject to change



TERMINAL STYLE

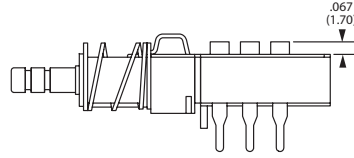


(NONE) SOLDER LUGS & PC PINS



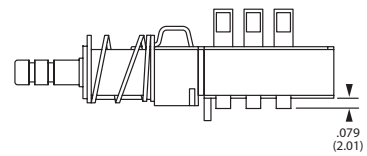
01A CUT SOLDER LUGS (North America)

LB CUT SOLDER LUGS (Europe)



01B CUT PC PINS (North America)

PB CUT PC PINS (Europe)



ELECTRICAL FUNCTION



| OPTION CODE | FUNCTION |
|---------------|-----------------------------------|
| (NONE) | BBM Non-shorting |
| M | MBB Shorting (North America only) |

CONTACT MATERIAL



| NORTH AMERICA OPTION CODE | EUROPE OPTION CODE | RoHS COMPLIANT * | RoHS COMPATIBLE * | MATERIAL | RATING |
|---------------------------|--------------------|------------------|-------------------|------------|------------------------------------|
| (NONE) | (NONE) | YES | YES | SILVER, AG | 50 VA/15 W; 125/30 V; 0.5/0.5 A |
| AU | P | YES | YES | GOLD | 1 VA/300mW; 50/30 V; 0.04 A/0.01 A |

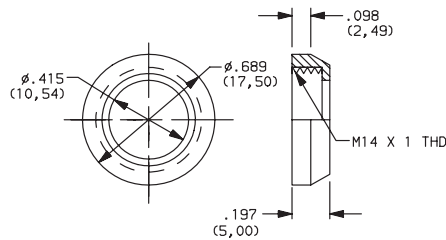
* Note: See Technical Data section of this catalog for RoHS compliant and compatible definitions and specifications.

DRESS NUT

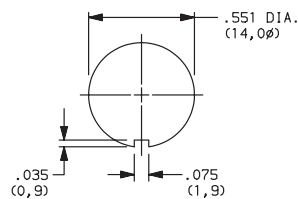


(NONE) NO DRESS NUT FOR F & F/LT DESIGNATIONS

B BLACK

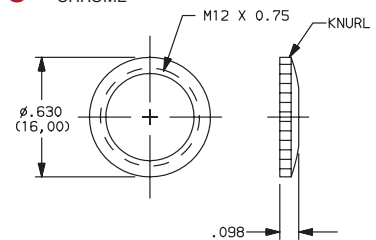


PANEL CUTOUT

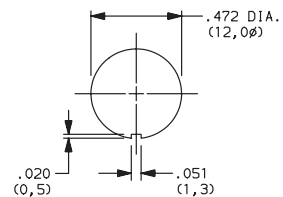


NOTE: Available with ZF designation and FA200 buttons.

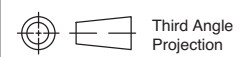
C CHROME



PANEL CUTOUT



NOTE: Available with ZF designation and FG button.



Third Angle Projection



F Series Pushbutton Switches

Pushbutton

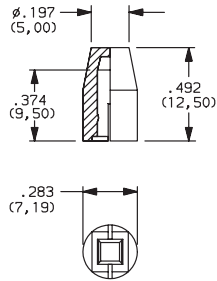
A

SOLID BUTTON

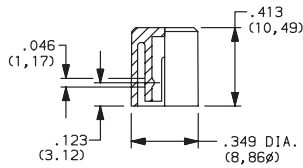


STYLE

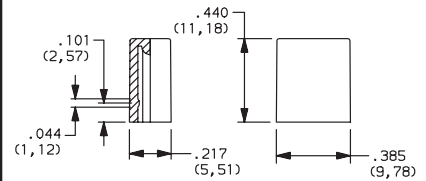
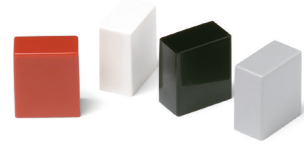
F01 FMR



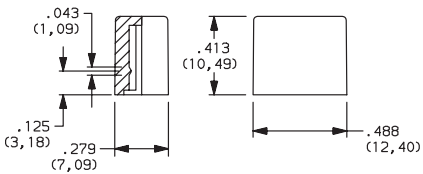
F02 FG



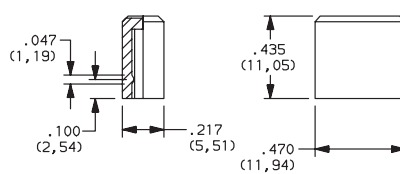
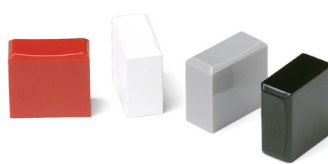
F12 FSC



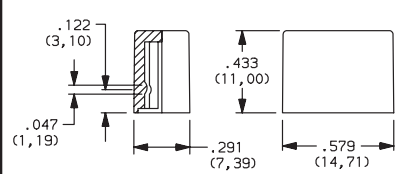
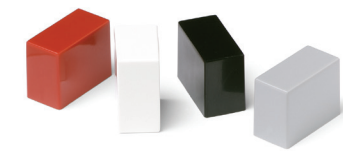
F13 FSD



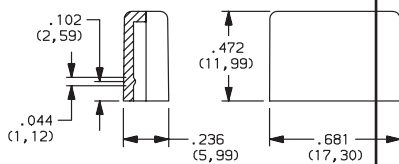
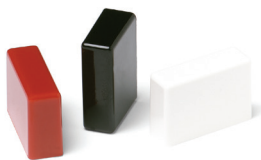
F14 FU12



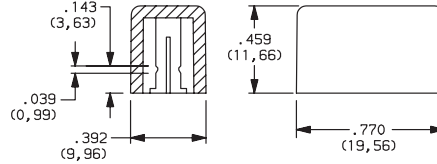
F15 FSB



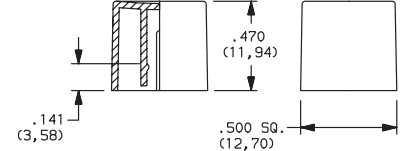
F16 FE



F19 FA



F21 F001



| OPTION CODE | COLOR |
|-------------|----------|
| 01 | BLACK |
| 02 | WHITE |
| 03 | RED |
| 04 | LT. GRAY |

F Series Pushbutton Switches



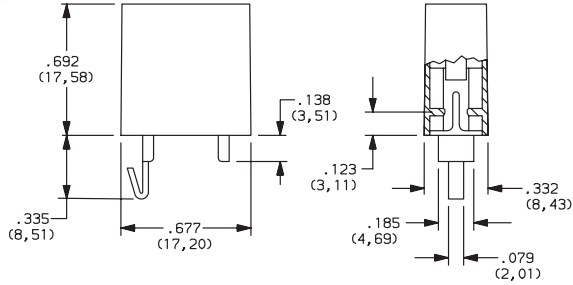
A Pushbutton

MECHANICAL BUTTON

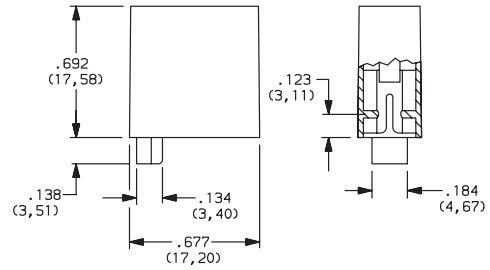


STYLE

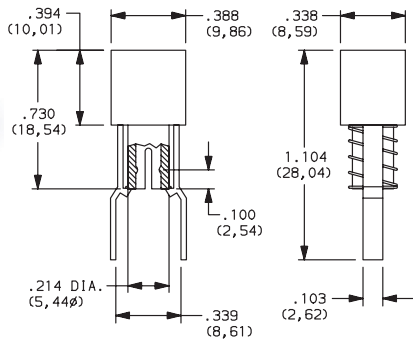
F01 FA100



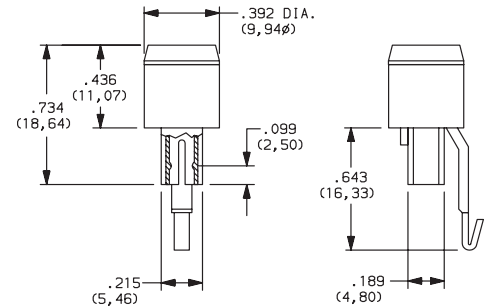
F02 FA101



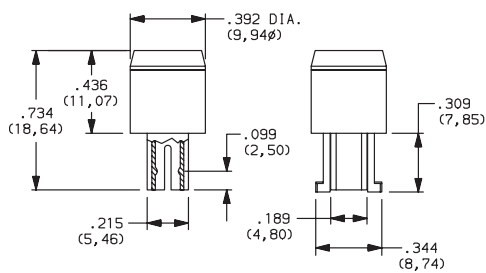
F07 FA120



F08 FA201



F11 FA200



SHELL COLOR

01 BLACK

OUT POSITION COLOR

01 BLACK

IN POSITION COLOR

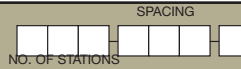
| OPTION CODE | COLOR |
|-------------|--------|
| 02 | WHITE |
| 06 | YELLOW |
| 07 | BLUE |
| 08 | GREEN |
| 12 | ORANGE |



F Series Pushbutton Switches

Pushbutton
A

CHASSIS



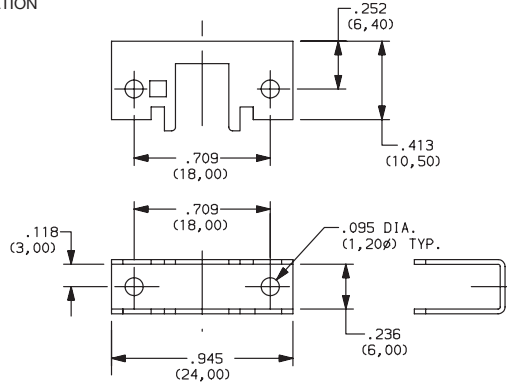
NUMBER OF STATIONS

C00 Thru C10 Comes with standard 0.094 (2,44mm) mounting holes

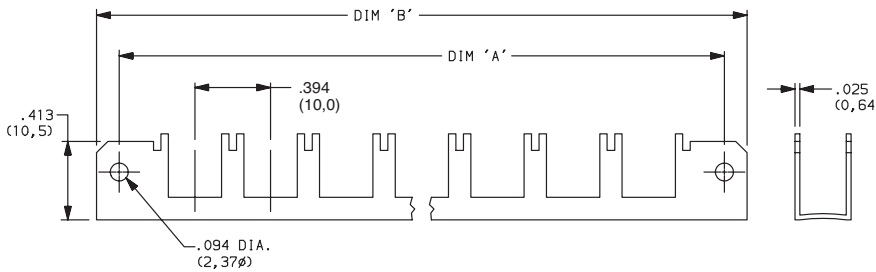
NOTE: Single station chassis available with mounting configurations, consult factory.

SPACING

00 SINGLE STATION

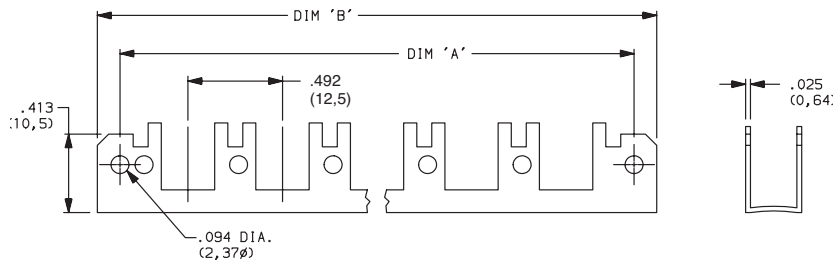


10 10mm

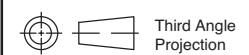


| No. of Stations | Dim. 'A' | Dim. 'B' | Tolerance |
|-----------------|-------------------|-------------------|-----------|
| 2 | 1.182 (30,02) | 1.418 (36,02) | 0.005 |
| 3 | 1.575 (40,01) | 1.811 (46,00) | 0.010 |
| 4 | 1.969 (50,01) | 2.205 (56,01) | 0.010 |
| 5 | 2.363 (60,02) | 2.599 (66,01) | 0.010 |
| 6 | 2.757 (70,03) | 2.993 (76,02) | 0.015 |
| 7 | 3.150 (80,01) | 3.386 (86,00) | 0.015 |
| 8 | 3.544 (90,02) | 3.780 (96,01) | 0.015 |
| 9 | 3.938 (100,03) | 4.174 (106,02) | 0.015 |
| 10 | 4.331 (110,01) | 4.567 (116,00) | 0.015 |

12.5 12.5mm



| No. of Stations | Dim. 'A' | Dim. 'B' | Tolerance |
|-----------------|-------------------|-------------------|-----------|
| 2 | 1.200 (30,48) | 1.436 (36,47) | 0.005 |
| 3 | 1.692 (42,98) | 1.928 (48,97) | 0.010 |
| 4 | 2.184 (55,47) | 2.420 (61,47) | 0.010 |
| 5 | 2.676 (67,97) | 2.912 (73,96) | 0.010 |
| 6 | 3.169 (80,49) | 3.405 (86,49) | 0.015 |
| 7 | 3.661 (92,99) | 3.897 (98,98) | 0.015 |
| 8 | 4.153 (105,49) | 4.389 (111,48) | 0.015 |
| 9 | 4.645 (117,98) | 4.881 (123,98) | 0.015 |
| 10 | 5.137 (130,48) | 5.373 (136,47) | 0.015 |



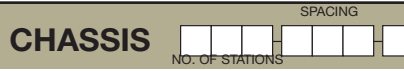
29 may 19

Dimensions are shown: Inches (mm)
Specifications and dimensions subject to change

F Series Pushbutton Switches



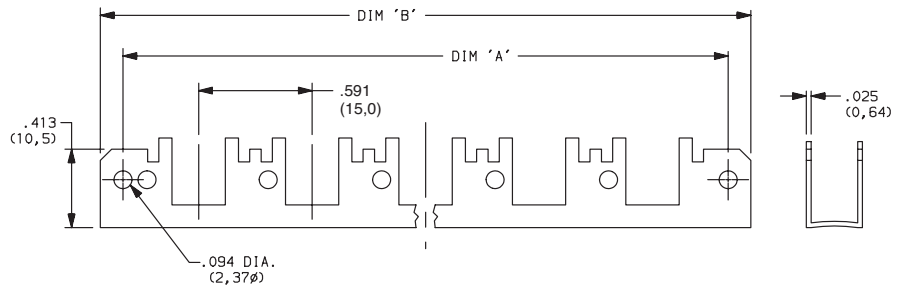
A
Pushbutton



SPACING

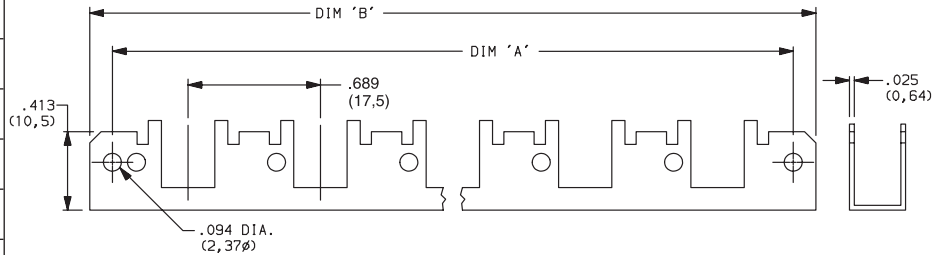
15 15mm

| No. of Stations | Dim. 'A' | Dim. 'B' | Tolerance |
|-----------------|-------------------|-------------------|-----------|
| 2 | 1.374 (34,90) | 1.615 (41,02) | 0.005 |
| 3 | 1.969 (50,01) | 2.205 (56,01) | 0.010 |
| 4 | 2.560 (65,02) | 2.796 (71,02) | 0.010 |
| 5 | 3.150 (80,01) | 3.386 (86,00) | 0.010 |
| 6 | 3.741 (95,02) | 3.977 (101,02) | 0.015 |
| 7 | 4.332 (110,03) | 4.568 (116,03) | 0.015 |
| 8 | 4.922 (125,02) | 5.158 (131,01) | 0.015 |
| 9 | 5.513 (140,03) | 5.749 (146,02) | 0.015 |
| 10 | 6.103 (155,02) | 6.339 (161,01) | 0.015 |



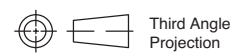
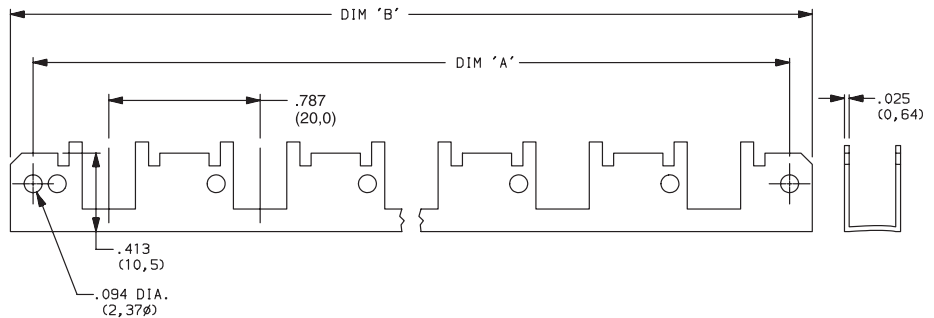
17.5 17.5mm

| No. of Stations | Dim. 'A' | Dim. 'B' | Tolerance |
|-----------------|-------------------|-------------------|-----------|
| 2 | 1.477 (37,52) | 1.713 (43,51) | 0.005 |
| 3 | 2.166 (55,02) | 2.402 (61,01) | 0.010 |
| 4 | 2.855 (75,52) | 3.091 (78,51) | 0.010 |
| 5 | 3.544 (90,02) | 3.780 (96,01) | 0.010 |
| 6 | 4.233 (107,52) | 4.469 (113,51) | 0.015 |
| 7 | 4.922 (125,02) | 5.158 (131,01) | 0.015 |
| 8 | 5.611 (142,52) | 5.847 (148,51) | 0.015 |
| 9 | 6.300 (160,02) | 6.536 (166,01) | 0.015 |
| 10 | 6.989 (177,52) | 7.225 (183,52) | 0.015 |



20 20mm

| No. of Stations | Dim. 'A' | Dim. 'B' | Tolerance |
|-----------------|-------------------|-------------------|-----------|
| 2 | 1.575 (40,01) | 1.811 (46,00) | 0.005 |
| 3 | 2.363 (60,02) | 2.599 (66,01) | 0.010 |
| 4 | 3.150 (80,01) | 3.386 (86,00) | 0.010 |
| 5 | 3.938 (100,03) | 4.174 (106,02) | 0.010 |
| 6 | 4.725 (120,02) | 4.961 (126,01) | 0.015 |
| 7 | 5.512 (140,00) | 5.748 (146,00) | 0.015 |
| 8 | 6.300 (160,02) | 6.536 (166,01) | 0.015 |
| 9 | 7.087 (180,01) | 7.323 (186,00) | 0.015 |
| 10 | 7.875 (200,03) | 8.111 (206,02) | 0.015 |



X-ON Electronics

Largest Supplier of Electrical and Electronic Components

Click to view similar products for [Gate Drivers](#) category:

Click to view products by [C&K](#) manufacturer:

Other Similar products are found below :

[00053P0231](#) [8967380000](#) [56956](#) [CR7E-30DB-3.96E\(72\)](#) [57.404.7355.5](#) [LT4936](#) [57.904.0755.0](#) [5803-0901](#) [58410](#) [5882900001](#) [00600P0005](#)
[00-9050-LRPP](#) [00-9090-RDPP](#) [5951900000](#) [01-1003W-10/32-15](#) [LTLA6E-1S-WH-RC-FN12VXCR1](#) [0131700000](#) [00-2240](#) [LTP70N06](#)
[LVP640](#) [0158-624-00](#) [5J0-1000LG-SIL](#) [020017-13](#) [LY1D-2-5S-AC120](#) [LY2-0-US-AC120](#) [LY2-US-AC240](#) [LY3-UA-DC24](#) [00-5150](#)
[00576P0020](#) [00600P0010](#) [LZNQ2M-US-DC5](#) [LZNQ2-US-DC12](#) [LZP40N10](#) [00-8196-RDPP](#) [00-8274-RDPP](#) [00-8275-RDNP](#) [00-8609-](#)
[RDPP](#) [00-8722-RDPP](#) [00-8728-WHPP](#) [00-8869-RDPP](#) [00-9051-RDPP](#) [00-9091-LRPP](#) [00-9291-RDPP](#) [0207100000](#) [0207400000](#) [60100564](#)
[01312](#) [0134220000](#) [6035](#) [M15730061](#)