

8600 Series Microminiature Pushbutton Switches



A
Pushbutton

Features/Benefits

- Available with overtravel
- Normally closed models available
- Microminiature size ideal for applications where space is limited
- RoHS compliant

Typical Applications

- Detection
- Telecommunications and networking equipment
- Computers and peripherals



Models Available

Specifications

CONTACT RATING: Q contact material (8631, 8632 Models): 500 mA @ 120 V AC or 28 V DC; 250 mA @ 250 V AC; (8633 Model): 250 mA @ 120 V AC or 28 V DC; 125 mA @ 250 V AC. See page A-73 for additional ratings.

ELECTRICAL LIFE:

8631 and 8633 MODELS: 250,000 actuations at full load.
8632 MODEL: 100,000 actuations at full load.

CONTACT RESISTANCE:

Below 30 mΩ typ. initial @ 2-4 V DC, 100 mA, for both silver and gold plated contacts.

INSULATION RESISTANCE:

109 Ω min.

DIELECTRIC STRENGTH:

500 Vrms min. @ sea level.

OPERATING TEMPERATURE:

-30°C to 65°C.

SOLDERABILITY:

Per MIL-STD-202F method 208D, or EIA RS-186E method 9.

Materials

CASE: Glass filled phenolic or diallyl phthalate (DAP), (UL94V-0).

PLUNGER: Glass filled nylon (UL94V-0), black standard.

BUSHING: Brass, nickel plated.

CONTACTS: Q contact material: Coin silver, silver plated.

See page A-73 for additional contact materials.

TERMINALS:

8631, 8632 MODELS: Copper alloy, silver plated.

8633 MODEL: Q contact material: Coin silver.

See page A-73 for additional contact materials.

TERMINAL SEAL:

8633 MODEL: Epoxy.

8631, 8632 MODELS: Terminals insert molded.

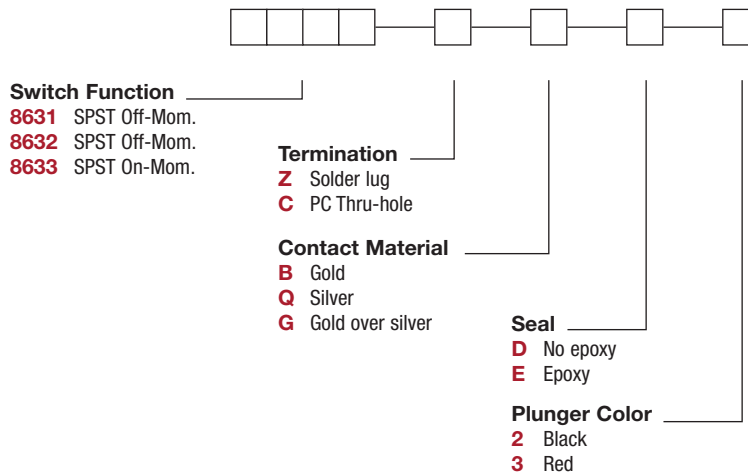
HARDWARE: Nut: Brass, nickel plated.

NOTE: Any models supplied with Q, B or G contact material are RoHS compliant.

NOTE: Specifications and materials listed above are for switches with standard options. For information on specific and custom switches, consult Customer Service Center.

Build-A-Switch

To order, simply select desired option from each category and place in the appropriate box. Available options are shown and described on pages A-72 and A-73. For additional options not shown in catalog, consult Customer Service Center.



Dimensions are shown: Inches (mm)
Specifications and dimensions subject to change



8600 Series Microminiature Pushbutton Switches

Pushbutton

SWITCH FUNCTION

| NO. POLES | MODEL NO. | SWITCH FUNCTION | | TOTAL TRAVEL | ACTUATION FORCE | SCHEMATIC | |
|---|-------------|-----------------|--------|------------------|-------------------------------------|---------------------|----------------------|
| | | POS. 1 | POS. 2 | | | | |
| SP | 8631 | OFF | MOM. | .040 (1,02) TYP. | 5 oz (140g) TYP. | N.O. | |
| SPST <p>Part number shown: 8631ZQD2</p> <p>Terminals Insert Molded</p> | | | | | | | |
| SP | 8632 | OFF | MOM. | .106 (2,69) TYP. | with overtravel .024 (0,61) TYP. | 6.25 oz (177g) TYP. | N.O. with overtravel |
| SPST <p>Part number shown: 8632ZQD2</p> <p>Terminals Insert Molded</p> | | | | | | | |
| SP | 8633 | ON | MOM. | .048 (1,22) TYP. | 5 oz (140g) TYP. | N.C. | |
| SPST <p>Part number shown: 8633ZQE2</p> | | | | | | | |

MOM. = Momentary

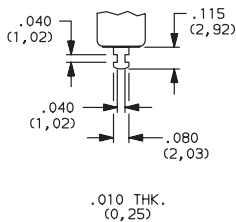
NOTE: Caps available for plunger options, see page A-73.

TERMINATIONS

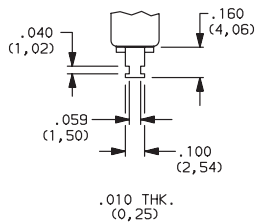
Z SOLDER LUG

C PC THRU-HOLE

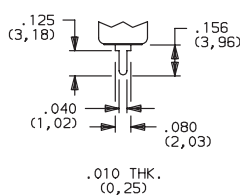
8631, 8632 models only.



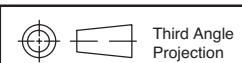
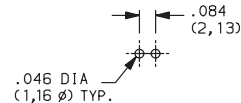
8633 models only.



8631, 8632 models only.



PC MOUNTING



Dimensions are shown: Inches (mm)
Specifications and dimensions subject to change



8600 Series Microminiature Pushbutton Switches



A
Pushbutton

CONTACT MATERIAL

| OPTION CODE | RoHS COMPLIANT * | RoHS COMPATIBLE * | CONTACT MATERIAL | TERMINAL PLATING | RATINGS | |
|-------------|------------------|-------------------|-----------------------|------------------|-----------------------------------|--|
| | | | | | | |
| B | YES | YES | GOLD 1 | GOLD 1 | LOW LEVEL/ DRY CIRCUIT | 0.4 VA MAX. @ 20 V AC OR DC MAX. |
| Q | YES | YES | SILVER 4 | SILVER 5 | POWER | 8631, 8632 MODELS: 500 mA @ 120 V AC OR 28 V DC; 250 mA @ 250 V AC. 8633 MODELS: 250 mA @ 120 V AC OR 28 V DC; 125 mA @ 250 V AC. |
| G | YES | YES | GOLD OVER SILVER 4 | GOLD 3 | LOW LEVEL/DRY CIRCUIT OR POWER | 0.4 VA MAX @ 20 V AC OR DC MAX. OR 8631, 8632 MODELS: 500 mA @ 120 V AC OR 28 V DC; 250 mA @ 250 V AC. 8633 MODELS: 250 mA @ 120 V AC OR 28 V DC; 125 mA @ 250 V AC. |

* Note: See Technical Data section of this catalog for RoHS compliant and compatible definitions and specifications.

1 CONTACTS & TERMINALS: Copper alloy, with gold plate over nickel plate.

2 CONTACTS: Coin silver, with gold plate over nickel plate.

3 TERMINALS: Copper alloy, with gold plate over nickel plate.
8633 model only: Coin silver, with gold plate over nickel plate.

4 CONTACTS: Coin silver, silver plated.

5 TERMINALS: Copper alloy, silver plated. 8633 model only: coin silver.

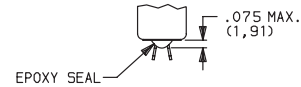
NOTE: Any models supplied with Q, B or G contact material are RoHS compliant.

8631, 8632 models with all options when ordered with G or Q contact material.
Q contact material standard with C, Z terminations.

SEAL

D NO EPOXY SEAL

E EPOXY SEAL



Not available on 8633 model.
Standard on 8631, 8632 models.

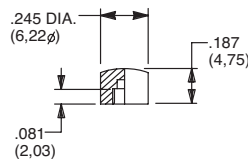
Not available on 8631, 8632 models.
Standard on 8633 model only.

PLUNGER COLOR

| OPTION CODE | COLOR |
|-------------|-------|
| 2 | BLACK |
| 3 | RED |

AVAILABLE HARDWARE

Cap



PART NO.

785101000 WHITE
785102000 BLACK
785103000 RED

Material: Nylon
Finish: Gloss

NOTE: Other cap colors available, consult Customer Service Center.



Dimensions are shown: Inches (mm)
Specifications and dimensions subject to change



X-ON Electronics

Largest Supplier of Electrical and Electronic Components

Click to view similar products for [Switch Bezels](#) / [Switch Caps](#) category:

Click to view products by [C&K](#) manufacturer:

Other Similar products are found below :

[896809000](#) [LW1A-B2-R](#) [LW2A-B1-G](#) [704.604.4](#) [704.955.3](#) [F1403](#) [7527](#) [760203000](#) [760503000](#) [766601000](#) [785105000](#) [785106000](#)
[79211759](#) [MG12KB](#) [MH11](#) [MH13](#) [MHU31](#) [MJ1216](#) [MJ1226](#) [MJ33](#) [MJ612](#) [MJ626](#) [MJ627](#) [9001T8BK](#) [908-1634](#) [92-343.200](#) [92-343.400](#)
[95804.920](#) [95CAP-011](#) [95CAP-112](#) [11-932.7](#) [99-901.9](#) [99-902.9](#) [99-909.4](#) [99-909.5](#) [99-920.8](#) [A0261A](#) [11-931.2](#) [11-932.5](#) [11-936](#)
[AKTSC22B](#) [AT496H](#) [AW-RF8](#) [161006](#) [1825068-6](#) [184-1872](#) [187-1872](#) [188-1471](#) [18-920.1](#) [1DFBLK](#)