

# ATP16 Series Anti-Vandal Sealed Pushbutton Switch

## Features/Benefits

- Momentary or Lock version
- IP67 sealed
- Rated at 2A / 36 Vdc
- 1,000,000 life cycle
- Various colors of LED illuminate indicator
- Choices of actuator with ring or power logo
- RoHS compliant

## Typical Applications

- Alarm, safety and security systems
- Intercom "push-to-talk" devices
- Automatic food and drink vending machines
- Parking lot ticket machines & ticket paying stations
- Industrial Instruments



## Specifications

FUNCTION: SPST  
CONTACT ARRANGEMENT: N.O.  
MOUNTING TYPE: Threaded front panel mount  
TORQUE FOR THREADED BODY: 11.5 kgf/cm

## Mechanical

OPERATING LIFE: Momentary 1,000,000 cycles  
Lock 100,000 cycles  
TOTAL TRAVEL: Momentary 2.0 mm; Lock 2.3 mm  
OPERATING FORCE: 4.5 ± 1.5N

## Electrical

CONTACT RATING: 2A / 36Vdc  
OPERATING LIFE: Make-and-break cycles at full load  
200,000 (Momentary)  
100,000 (Lock)  
DIELECTRIC STRENGTH: 2,000 V RMS @ sea level  
INSULATION RESISTANCE: 1,000 MΩ min. @ 500 VDC  
INITIAL CONTACT RESISTANCE : 50 mΩ max @1A 12VDC

## Materials

BUSHING: Stainless steel / Aluminum alloy, anodized  
BASE: PBT (UL 94-A0), Nylon 6/6 (lock version)  
ACTUATOR: PC (UL 94-V2); POM (lock version)  
INTERNAL ASSEMBLY: POM / PA66  
SPRING: Steel  
SEALING / O-ring: Silicone (Translucent) / Silicone  
TERMINALS / CONTACT: Brass, Silver or gold plated  
HEX NUT: Brass (Nickel plated)

## Operating Environment

OPERATING TEMPERATURE: -20°C to +70°C  
SEALING / PROTECTION: IP67

**NOTE:** Specifications and materials listed above are for switches with standard options.  
For information on specific and custom switches, please contact Customer Service.

## Build-A-Switch

To order, simply select desired option from each category and place in the appropriate box.



Designation  
**ATP16** Series

Actuator Style  
**D** Dome\*  
**S** Standard\*\*

Actuator Indicator  
**L1** Ring  
**L5** Ring & Power logo

### LED Illumination

Color	Dual color
<b>0</b> Without LED	<b>A</b> Red & Green
<b>2</b> White	<b>R</b> RGB***
<b>3</b> Red	
<b>4</b> Orange***	
<b>5</b> Yellow	
<b>6</b> Green	
<b>7</b> Blue	

LED voltage DC  
**00** 0V without resistor  
**03** 3V  
**06** 6V  
**12** 12V  
**24** 24V

Terminal plating  
**G** Gold flash

Termination  
**04** Solder lug  
**W1** Wire lead 500mm \*\*\*\*

Mechanical function  
**A** Momentary (Double D bushing)  
**E** Lock (D shape bushing)

Contact arrangement  
**S** SPST

### Bushing type

<b>B3</b> Al alloy (Black anodized)
<b>B4</b> Al alloy (Natural anodized)
<b>M0</b> Stainless (Natural), Round***
<b>M4</b> Stainless (Natural), Double D***

\* For bushing type B3 and B4 only.

\*\* Available on bushing type M0 & M4 only.

\*\*\* Available on momentary function only.

\*\*\*\* Available upon request, please consult your sales representative for details.

# ATP16 Series Anti-Vandal Sealed Pushbutton Switch

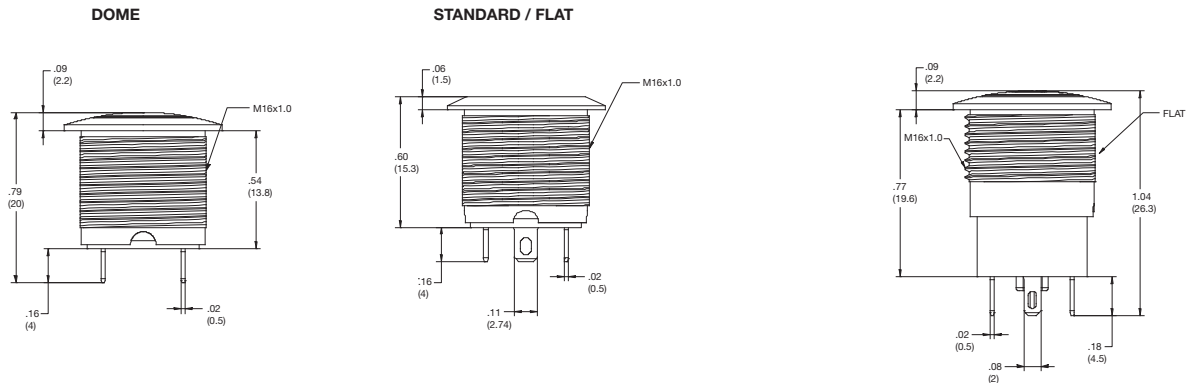


A  
Pushbutton

## STANDARD VIEW

### MOMENTARY

### LOCK



## ACTUATOR STYLE

### D DOME

### S STANDARD / FLAT



## ACTUATOR INDICATOR

### L1 RING

### L5 RING & POWER





# ATP16 Series Anti-Vandal Sealed Pushbutton Switch

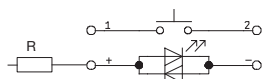
Pushbutton

A

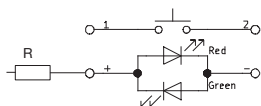
## CIRCUIT

### MOMENTARY

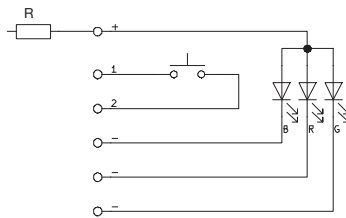
#### SINGLE COLOR LED



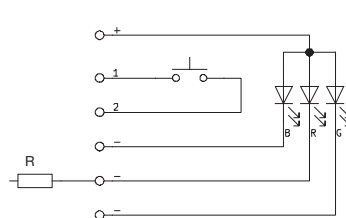
#### DUAL COLOR LED



#### RGB LED



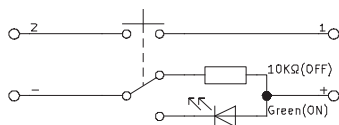
6 / 12 / 24V LED



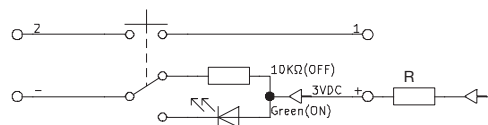
3V LED

### LOCK

#### SINGLE COLOR LED

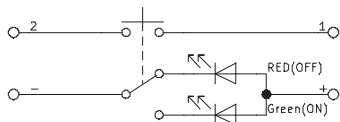


3V LED

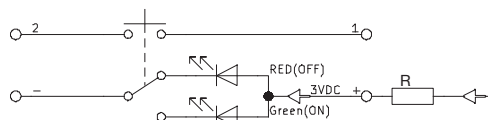


6 / 12 / 24V LED

#### DUAL COLOR LED



3V LED



6 / 12 / 24V LED

R: Resistor value is according to the LED voltage applied.

Resistor value (Apply LED Voltage)
LED input 3 VDC, 47 ohms (Red/Yellow/Orange LED type only)
LED input 6 VDC, 180 ohms
LED input 12 VDC, 470 ohms
LED input 24 VDC, 1000 ohms

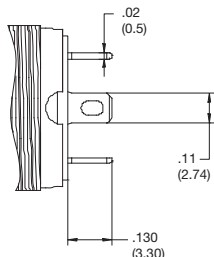
Ohms value of resistance tolerance:  $\pm 5\%$



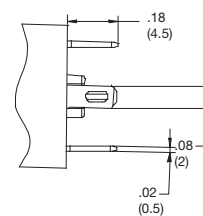
### TERMINATION

#### 04 SOLDER LUG

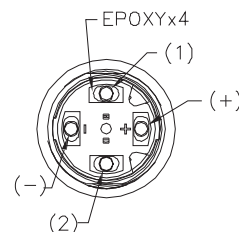
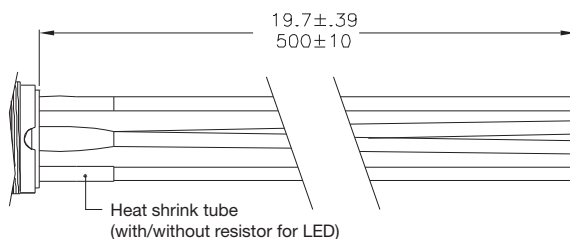
MOMENTARY



LOCK



#### W1 WIRE LEAD 500MM\*

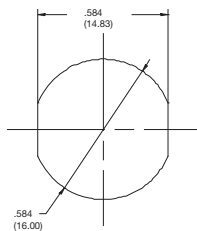


\* Available upon request, please consult your sales representative for details.

### PANEL CUTOUT

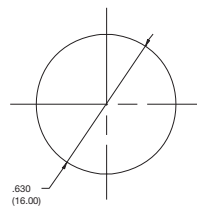
#### B3, B4 & M4

DOUBLE D



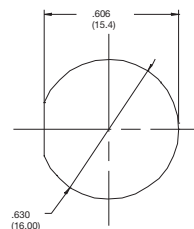
#### M0

ROUND



#### B3 & B4

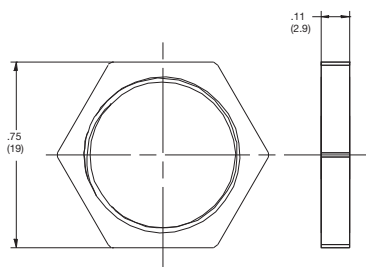
D SHAPE



### HARDWARE

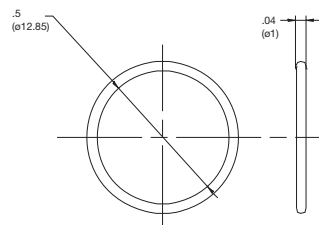
#### HEX NUT

Order PN: ATP16-HN



#### O RING

Order PN: ATP16-OR



## X-ON Electronics

Largest Supplier of Electrical and Electronic Components

*Click to view similar products for [Pushbutton Switches](#) category:*

*Click to view products by [C&K](#) manufacturer:*

Other Similar products are found below :

[8940K2012](#) [LW1L-M1C10V-A](#) [LW1L-M1C70-A](#) [LW2L-A1C20M-GD](#) [LW2L-M1C20M-A](#) [60324L](#) [M22-D-R-GB0/K11](#) [M7E-HRN2](#)  
[67021K512](#) [67081K512X](#) [701PB580](#) [7199K101](#) [810K12910](#) [810KSV30B](#) [MML21EA2ADK](#) [MML21KA3ABK](#) [MML23KA3AC05K-001](#)  
[MML23KW3AA01W](#) [8418K2](#) [8442K3](#) [8450K1](#) [860K11911T01A](#) [861901](#) [861K11911T01A07](#) [861K13810T00A14](#) [861K13911](#)  
[8646AB6X718UL](#) [8646ABUL](#) [9001KXRK](#) [907AYY100](#) [PMHD155A1](#) [9533CD4+U574+U4922](#) [95-414.000](#) [99-450.837](#) [99-453.837](#)  
[PV3H2B0NN-341](#) [1203MRA](#) [A22NZBGANGA](#) [A22NZBNANGA](#) [A22NZMPATRA](#) [A2PMA1X03EC56](#) [A3A-5123-02](#) [A3A-7140](#) [A3A-7310](#) [A3A-7340](#) [A3U-TMW-A2C-5M](#) [A595](#) [12037A2ULCSA](#) [ABD122N-B](#) [1211390004](#)