



ATPS22 Series Anti-Vandal Short-Body Sealed Pushbutton Switch

NEW

Pushbutton A

Features/Benefits

- Momentary
- IP67 sealed & IK10 (Stainless steel bushing)
- Rated at 2A / 36 Vdc
- 1,000,000 mechanical lifecycles
- Various colors of LED illuminate indicator
- Choices of actuator with ring or power logo
- RoHS compliant

Typical Applications

- Alarm, safety & security systems
- Intercom "push-to-talk" devices
- Automatic food & drink vending machines
- Parking lot ticket machines & ticket paying stations
- Industrial instruments



Specifications

FUNCTION: SPST
CONTACT ARRANGEMENT: N.O.
MOUNTING TYPE: Threaded front panel mount
TORQUE FOR THREADED BODY: 11.5 kgf/cm

Mechanical

MECHANICAL LIFE: 1,000,000 cycles
TOTAL TRAVEL: 1.8 ± 0.2 mm
OPERATING FORCE: 4.5 ± 1.5N

Electrical

CONTACT RATING: 2A / 36Vdc
ELECTRICAL LIFE: Make-and-break cycles at full load
200,000
DIELECTRIC STRENGTH: 2,000 V RMS @ sea level
INSULATION RESISTANCE: 1,000 MΩ min. @ 500 VDC
INITIAL CONTACT RESISTANCE : 50 mΩ max @1A 12VDC

Materials

BUSHING: Stainless steel
BASE: PA66, white (UL 94-V0)
ACTUATOR: PC, translucent (UL 94-V2), std steel
INTERNAL ASSEMBLY: PC, transparent (UL 94V2)
SPRING: Steel
SEALING / O-ring: Silicone (Translucent) / Silicone
TERMINALS / CONTACT: Brass, gold flash plated / Brass, silver alloy
HEX NUT: Brass (Nickel plated)

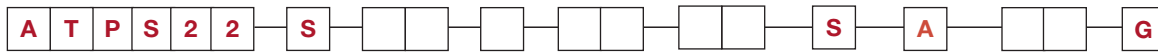
Operating Environment

OPERATING TEMPERATURE: -20°C to +70°C
SEALING / PROTECTION: IP67

NOTE: Specifications and materials listed above are for switches with standard options. For information on specific and custom switches, please contact Customer Service.

Build-A-Switch

To order, simply select desired option from each category and place in the appropriate box.



Designation _____
ATPS22 Series

Actuator Style _____
S Standard

Actuator Indicator _____
L0 Without LED
L1 Ring
L5 Ring & Power logo

LED Illumination _____

Color	Dual Color
0 Without LED	A Red & Green
2 White	B Red & Blue
3 Red	
5 Yellow	
6 Green	
7 Blue	

LED Voltage DC

00	0V without resistor
03	3V (47Ω with red/yellow LED)
06	6V (180Ω)
12	12V (470Ω)
24	24V (1000Ω)

Bushing type

M0	Stainless (Natural), Round
M2	Stainless (Natural), D shape
M4	Stainless (Natural), Double D

Terminal Plating
G Gold flash

Termination
04 Solder lug
W1 Wire lead 500mm

Mechanical Function
A Momentary

Contact Arrangement
S SPST

NEW

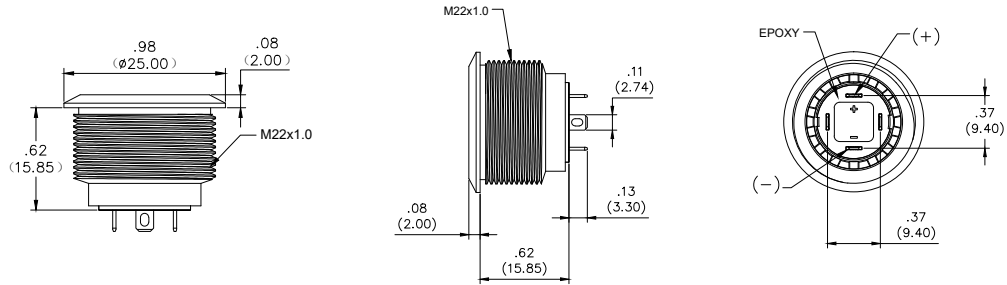
ATPS22 Series Anti-Vandal Short-Body Sealed Pushbutton Switch



A
Pushbutton

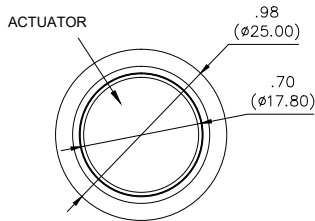
STANDARD VIEW

STANDARD

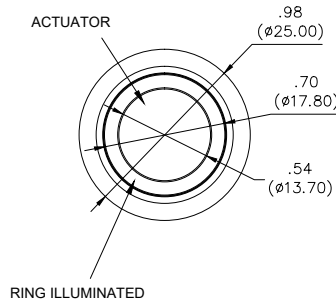


ACTUATOR INDICATOR

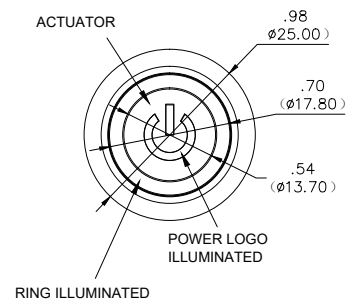
L0 WITHOUT LED



L1 RING



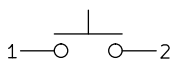
L5 RING & POWER



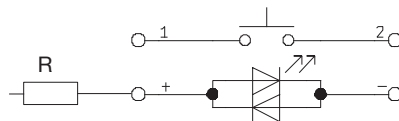
CIRCUIT

MOMENTARY

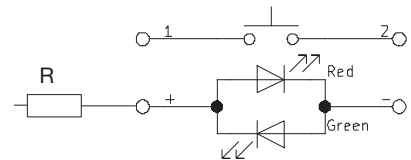
WITHOUT LED



SINGLE COLOR LED



DUAL COLOR LED



R: Resistor value is according to the LED voltage applied.

Resistor value (Apply LED Voltage)
LED input 3 VDC, 47 ohms (Red/Yellow LED type only)
LED input 6 VDC, 180 ohms
LED input 12 VDC, 470 ohms
LED input 24 VDC, 1000 ohms

Ohms value of resistance tolerance: ±5%



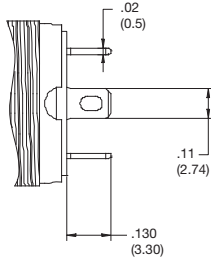
ATPS22 Series Anti-Vandal Short-Body Sealed Pushbutton Switch **NEW**

Pushbutton

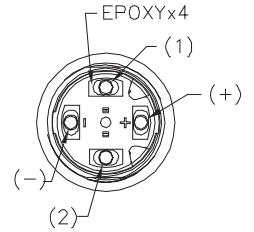
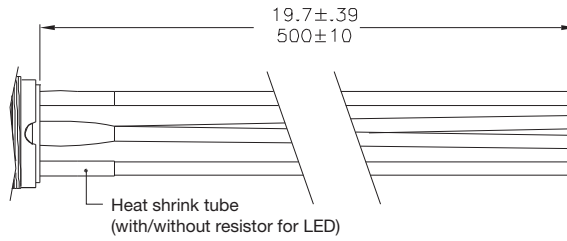
A

TERMINATION

04 SOLDER LUG



W1 WIRE LEAD 500MM* (Multi-wire lead AWG20, Section 0.6 mm², UL approved)

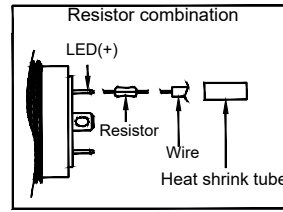


Non-LED

Description	Wire color
Terminal 1	Black
Terminal 2	Black

With LED

Description	Wire color
Terminal 1	Black
Terminal 2	Black
LED+	Red
LED-	Green

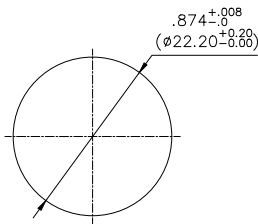


* Special length, please consult your sales representative for details.

PANEL CUTOUT

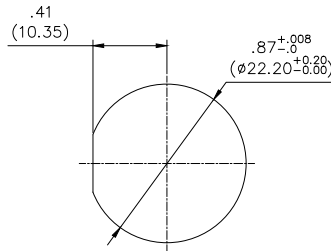
M0

ROUND



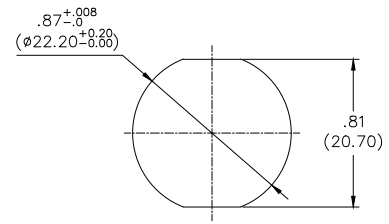
M2

D SHAPE



M4

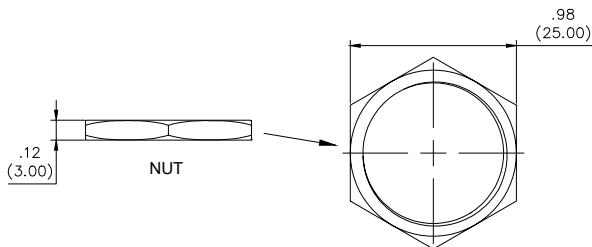
DOUBLE D



HARDWARE

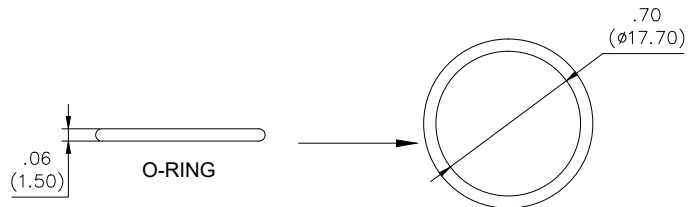
HEX NUT

Order PN: ATP22-HN



O RING

Order PN: ATP22-OR



X-ON Electronics

Largest Supplier of Electrical and Electronic Components

Click to view similar products for [Pushbutton Switches](#) category:

Click to view products by [C&K](#) manufacturer:

Other Similar products are found below :

[8940K2012](#) [LW1L-M1C10V-A](#) [LW1L-M1C70-A](#) [LW2L-A1C20M-GD](#) [LW2L-M1C20M-A](#) [60324L](#) [M22-D-R-GB0/K11](#) [M7E-HRN2](#)
[67021K512](#) [67081K512X](#) [701PB580](#) [7199K101](#) [810K12910](#) [810KSV30B](#) [MML21EA2ADK](#) [MML21KA3ABK](#) [MML23KA3AC05K-001](#)
[MML23KW3AA01W](#) [8418K2](#) [8442K3](#) [8450K1](#) [860K11911T01A](#) [861901](#) [861K11911T01A07](#) [861K13810T00A14](#) [861K13911](#)
[8646AB6X718UL](#) [8646ABUL](#) [9001KXRK](#) [907AYY100](#) [PMHD155A1](#) [9533CD4+U574+U4922](#) [95-414.000](#) [99-450.837](#) [99-453.837](#)
[PV3H2B0NN-341](#) [1203MRA](#) [A22NZBGANGA](#) [A22NZBNANGA](#) [A22NZMPATRA](#) [A2PMA1X03EC56](#) [A3A-5123-02](#) [A3A-7140](#) [A3A-7310](#) [A3A-7340](#) [A3U-TMW-A2C-5M](#) [A595](#) [12037A2ULCSA](#) [ABD122N-B](#) [1211390004](#)