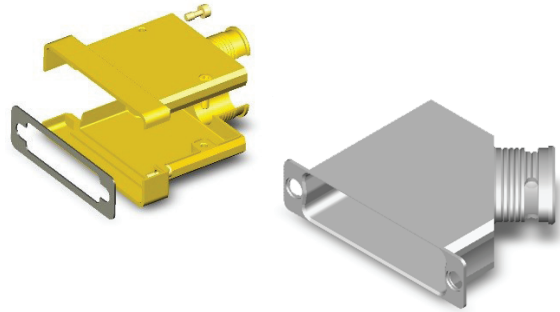


Features and Benefits

- **Ultra-light weight**
- **Solid fully machined aluminium alloy material**
- **Non magnetic**
- **EMI Application**

Typical Applications

- **Space equipment (engineering model)**
- **Satellites harnesses**
- **Avionics / Military**



Specification

- High performance D-SUB Lightweight Backshell meet stringent tests for residual magnetism and are suitable for use in Space Engineering Model, Avionics and Military applications.
- Suitable for Board to Cable or Cable to Cable applications.
- Sizes available: E, A, B, C, D and F.
- Outlets:
 - 90° circular (right and left) - Pages 2 & 3
 - Top circular - Page 4
 - Top elliptical - Page 5
 - 90° elliptical (right and left) - Pages 6 & 7
 - Top Saddle Clamp - Page 8
 - Closed - Extra Shorting Can - Page 9
 - Closed - Shorting Can - Page 10
 - Top circular (Rear Mounting) EMI Application - Pages 11 & 12
 - Top circular (Front Mounting) EMI Application - Pages 13 & 14

Characteristics

CHARACTERISTIC	SPECIFICATION
Operating temperature range	-55 / +125°C
Storage temperature range	-55 / +125°C
Residual magnetism level	200 Gamma max.

Quality Level

- “Commercial Space Grade”
- C&K Specification CS FR022, for low cost products manufactured:
 - In the same ESA qualified site
 - Through the same piece parts
 - With lighter controls, documentation and traceability

The backshells are totally compatible, interchangeable and intermateable with ESA quality level connectors ESCC 3401/001 (D*M connectors), 3401/002 (D*MA connectors) and 3401/072 (Backshells).

Options

- Male screwlock with clip (be ordered separately).

Packaging

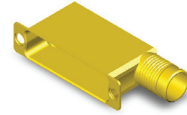
- Individual packaging.

MATERIALS AND FINISHES

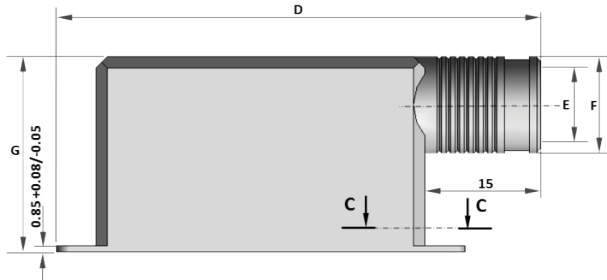
COMPONENT	MATERIAL	FINISH
Shell	Aluminium Alloy 6061-T6	Code A174: 25.4 µm min. electroless Nickel Code FR172: 0.7 µm min. Gold over 25.4 µm min. electroless Nickel
Screws	Brass	0.7 µm Gold over 1 µm min. Cu
Gasket	Silicone conductive elastomer	None

90° CIRCULAR ENTRY RIGHT OUTLET

(Our design accepts right or left mounting)

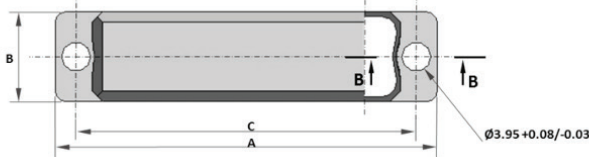


DIMENSIONS AND WEIGHT

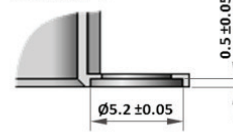


SIZE	A ±0.2	B ±0.15	C ±0.13	D ±0.5	ØE ±0.15	ØF ±0.15	G ±0.5	WEIGHT (GRAMS)
E	30.68	12.50	24.99	40.6	7.00	9.00	25.4	7
A	39.01	12.50	33.32	49.0	10.00	12.00	25.4	10
B	52.91	12.50	47.04	62.7	10.50	12.50	25.4	13.5
C	69.19	12.50	63.50	79.2	10.50	12.50	25.4	18
D	66.80	15.30	61.11	76.7	13.30	15.30	25.4	23
F	69.30	17.30	63.50	79.9	15.30	17.30	35.4	28

Configuration Sizes E-A-B-C-D



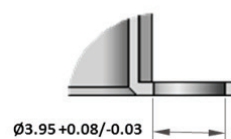
Detail B-B




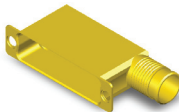
Configuration Size F



Detail A-A



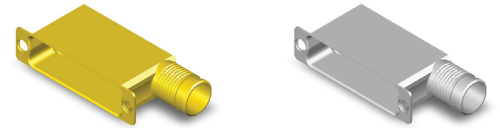
DESCRIPTION AND PART NUMBERS

SHELL FINISH	SIZE	C&K DESCRIPTION	C&K P/N
 Electroless Nickel	E	DE-BCKS-05-NMB-A174-FR022	C115366-2606B
	A	DA-BCKS-05-NMB-A174-FR022	C115366-2607B
	B	DB-BCKS-05-NMB-A174-FR022	C115366-2608B
	C	DC-BCKS-05-NMB-A174-FR022	C115366-2609B
	D	DD-BCKS-05-NMB-A174-FR022	C115366-2610B
	F	DF-BCKS-05-NMB-A174-FR022	C115366-2691B
 Gold	E	DE-BCKS-05-NMB-FR172-FR022	C115366-2606A
	A	DA-BCKS-05-NMB-FR172-FR022	C115366-2607A
	B	DB-BCKS-05-NMB-FR172-FR022	C115366-2608A
	C	DC-BCKS-05-NMB-FR172-FR022	C115366-2609A
	D	DD-BCKS-05-NMB-FR172-FR022	C115366-2610A
	F	DF-BCKS-05-NMB-FR172-FR022	C115366-2691A

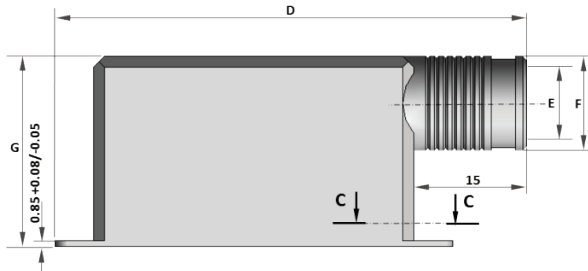
90° CIRCULAR ENTRY

LEFT OUTLET

(Our design accepts right or left mounting)

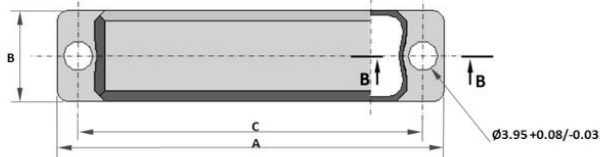


DIMENSIONS AND WEIGHT

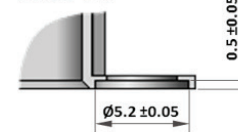


SIZE	A ±0.2	B ±0.15	C ±0.13	D ±0.5	ØE ±0.15	ØF ±0.15	G ±0.5	WEIGHT (GRAMS)
E	30.68	12.50	24.99	40.6	7.00	9.00	25.4	6.5
A	39.01	12.50	33.32	49.0	10.00	12.00	25.4	10
B	52.91	12.50	47.04	62.7	10.50	12.50	25.4	13.5
C	69.19	12.50	63.50	79.2	10.50	12.50	25.4	18
D	66.80	15.30	61.11	76.7	13.30	15.30	25.4	23
F	69.30	17.30	63.50	79.9	15.30	17.30	35.4	28

Configuration Sizes E-A-B-C-D



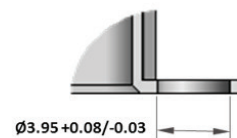
Detail B-B




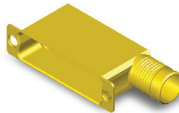
Configuration Size F



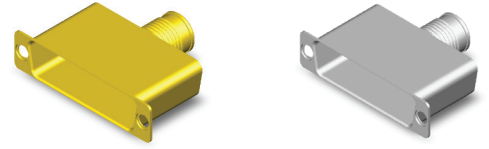
Detail A-A



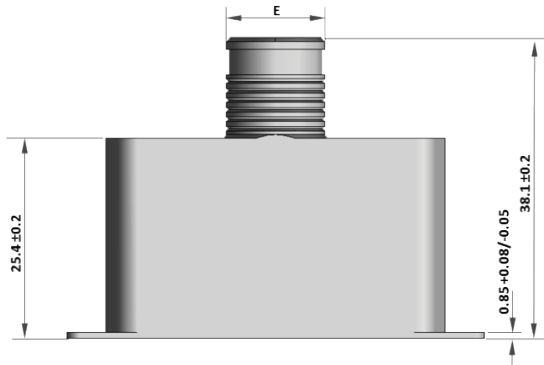
DESCRIPTION AND PART NUMBERS

SHELL FINISH	SIZE	C&K DESCRIPTION	C&K P/N
 Electroless Nickel	E	DE-BCKS-06-NMB-A174-FR022	C115366-2611B
	A	DA-BCKS-06-NMB-A174-FR022	C115366-2612B
	B	DB-BCKS-06-NMB-A174-FR022	C115366-2613B
	C	DC-BCKS-06-NMB-A174-FR022	C115366-2614B
	D	DD-BCKS-06-NMB-A174-FR022	C115366-2615B
	F	DF-BCKS-05-NMB-A174-FR022	C115366-2691B
 Gold	E	DE-BCKS-06-NMB-FR172-FR022	C115366-2611A
	A	DA-BCKS-06-NMB-FR172-FR022	C115366-2612A
	B	DB-BCKS-06-NMB-FR172-FR022	C115366-2613A
	C	DC-BCKS-06-NMB-FR172-FR022	C115366-2614A
	D	DD-BCKS-06-NMB-FR172-FR022	C115366-2615A
	F	DF-BCKS-05-NMB-FR172-FR022	C115366-2691A

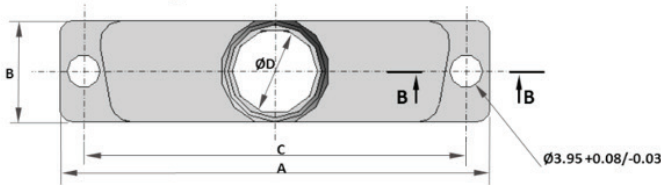
TOP CIRCULAR ENTRY



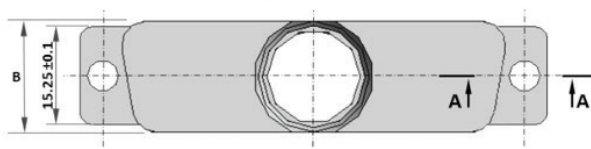
DIMENSIONS AND WEIGHT



Configuration Sizes E-A-B-C-D

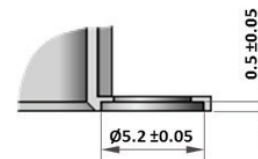


Configuration Size F

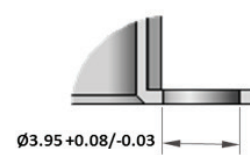


SIZE	A ±0.2	B ±0.15	C ±0.13	D ±0.2	ØE ±0.15	WEIGHT (GRAMS)
E	30.68	12.50	24.99	7.00	9.00	6.5
A	39.01	12.50	33.32	10.00	12.00	8.5
B	52.91	12.50	47.04	10.50	12.50	11.5
C	69.19	12.50	63.50	10.50	12.50	13.5
D	66.80	15.30	61.11	13.30	15.30	14.5
F	69.30	17.30	63.50	15.30	17.30	16.5


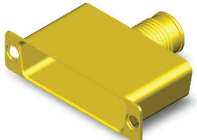
Detail B-B



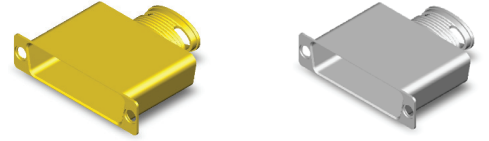
Detail A-A



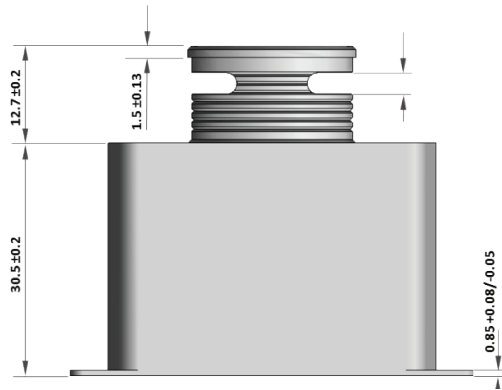
DESCRIPTION AND PART NUMBERS

SHELL FINISH	SIZE	C&K DESCRIPTION	C&K P/N
 Electroless Nickel	E	DE-BCKS-07-NMB-A174-FR022	C115366-2616B
	A	DA-BCKS-07-NMB-A174-FR022	C115366-2617B
	B	DB-BCKS-07-NMB-A174-FR022	C115366-2618B
	C	DC-BCKS-07-NMB-A174-FR022	C115366-2619B
	D	DD-BCKS-07-NMB-A174-FR022	C115366-2620B
	F	DF-BCKS-07-NMB-A174-FR022	C115366-2692B
 Gold	E	DE-BCKS-07-NMB-FR172-FR022	C115366-2616A
	A	DA-BCKS-07-NMB-FR172-FR022	C115366-2617A
	B	DB-BCKS-07-NMB-FR172-FR022	C115366-2618A
	C	DC-BCKS-07-NMB-FR172-FR022	C115366-2619A
	D	DD-BCKS-07-NMB-FR172-FR022	C115366-2620A
	F	DF-BCKS-07-NMB-FR172-FR022	C115366-2692A

TOP ELLIPTICAL ENTRY

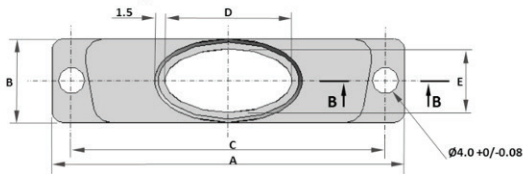


DIMENSIONS AND WEIGHT

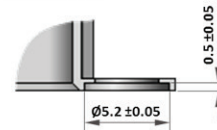


SIZE	A ±0.2	B ±0.15	C ±0.13	D ±0.38	E ±0.15	WEIGHT (GRAMS)
E	30.68	12.50	24.99	12.70	9.50	8
A	39.01	12.50	33.32	15.87	9.50	13
B	52.91	12.50	47.04	19.05	9.50	18
C	69.19	12.50	63.50	25.40	9.50	23
D	66.80	15.30	61.11	22.22	12.30	28
F	69.30	17.30	63.50	32.00	14.30	33

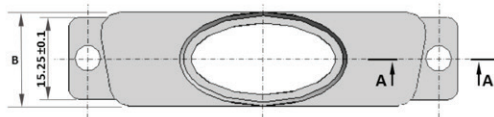
Configuration Sizes E-A-B-C-D



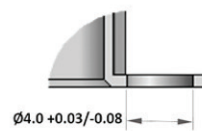
Detail B-B



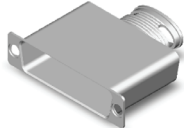
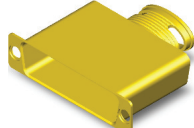
Configuration Size F



Detail A-A

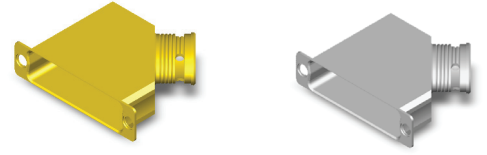


DESCRIPTION AND PART NUMBERS

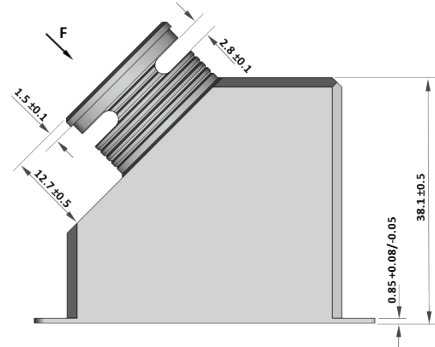
SHELL FINISH	SIZE	C&K DESCRIPTION	C&K P/N
 Electroless Nickel	E	DE-BCKS-11-NMB-A174-FR022	C115366-2622B
	A	DA-BCKS-11-NMB-A174-FR022	C115366-2623B
	B	DB-BCKS-11-NMB-A174-FR022	C115366-2624B
	C	DC-BCKS-11-NMB-A174-FR022	C115366-2625B
	D	DD-BCKS-11-NMB-A174-FR022	C115366-2626B
	F	DF-BCKS-11-NMB-A174-FR022	C115366-2693B
 Gold	E	DE-BCKS-11-NMB-FR172-FR022	C115366-2622A
	A	DA-BCKS-11-NMB-FR172-FR022	C115366-2623A
	B	DB-BCKS-11-NMB-FR172-FR022	C115366-2624A
	C	DC-BCKS-11-NMB-FR172-FR022	C115366-2625A
	D	DD-BCKS-11-NMB-FR172-FR022	C115366-2626A
	F	DF-BCKS-11-NMB-FR172-FR022	C115366-2693A

45° ELLIPTICAL ENTRY RIGHT OUTLET

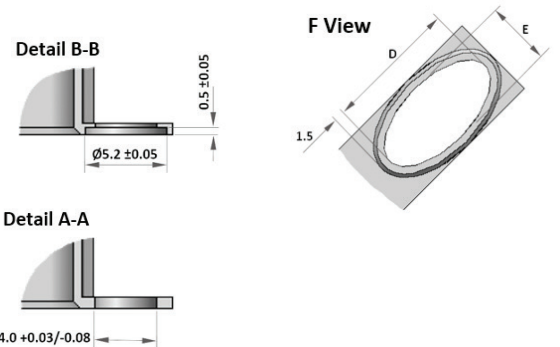
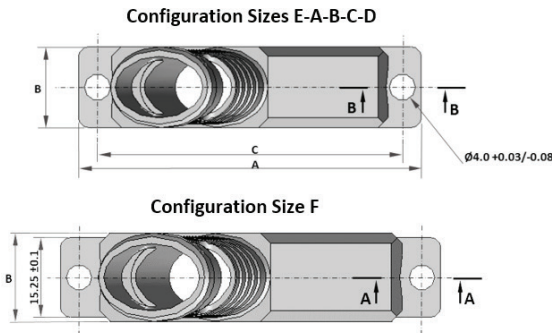
(Our design accepts right or left mounting)



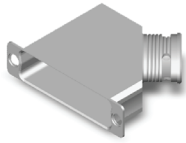
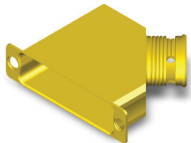
DIMENSIONS AND WEIGHT



SIZE	A ±0.2	B ±0.15	C ±0.13	D ±0.38	ØE ±0.15	WEIGHT (GRAMS)
E	30.68	12.50	24.99	12.70	9.50	10
A	39.01	12.50	33.32	15.87	9.50	14
B	52.91	12.50	47.04	19.05	9.50	20
C	69.19	12.50	63.50	25.40	9.50	26
D	66.80	15.30	61.11	22.22	12.30	33
F	69.30	17.30	63.50	29.00	14.30	40

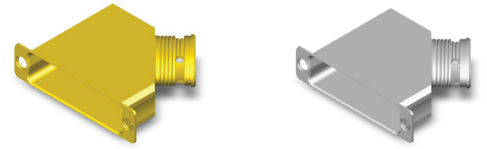


DESCRIPTION AND PART NUMBERS

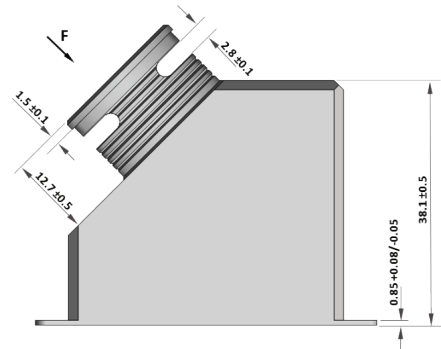
SHELL FINISH	SIZE	C&K DESCRIPTION	C&K P/N
 Electroless Nickel	E	DE-BCKS-08-NMB-A174-FR022	C115366-2627B
	A	DA-BCKS-08-NMB-A174-FR022	C115366-2628B
	B	DB-BCKS-08-NMB-A174-FR022	C115366-2629B
	C	DC-BCKS-08-NMB-A174-FR022	C115366-2630B
	D	DD-BCKS-08-NMB-A174-FR022	C115366-2631B
	F	DF-BCKS-08-NMB-A174-FR022	C115366-2694B
 Gold	E	DE-BCKS-08-NMB-FR172-FR022	C115366-2627A
	A	DA-BCKS-08-NMB-FR172-FR022	C115366-2628A
	B	DB-BCKS-08-NMB-FR172-FR022	C115366-2629A
	C	DC-BCKS-08-NMB-FR172-FR022	C115366-2630A
	D	DD-BCKS-08-NMB-FR172-FR022	C115366-2631A
	F	DF-BCKS-08-NMB-FR172-FR022	C115366-2694A

45° ELLIPTICAL ENTRY LEFT OUTLET

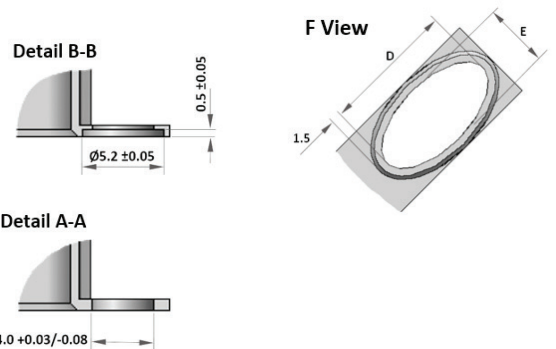
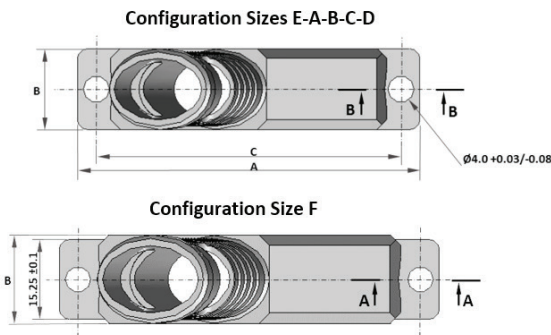
(Our design accepts right or left mounting)



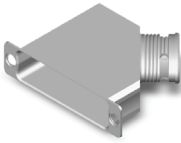
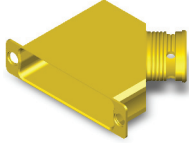
DIMENSIONS AND WEIGHT



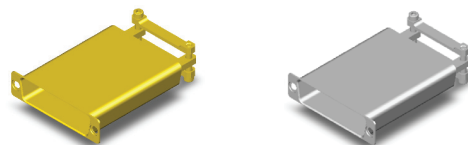
SIZE	A ±0.2	B ±0.15	C ±0.13	D ±0.38	ØE ±0.15	WEIGHT (GRAMS)
E	30.68	12.50	24.99	12.70	9.50	10
A	39.01	12.50	33.32	15.87	9.50	14
B	52.91	12.50	47.04	19.05	9.50	20
C	69.19	12.50	63.50	25.40	9.50	26
D	66.80	15.30	61.11	22.22	12.30	33
F	69.30	17.30	63.50	29.00	14.30	40



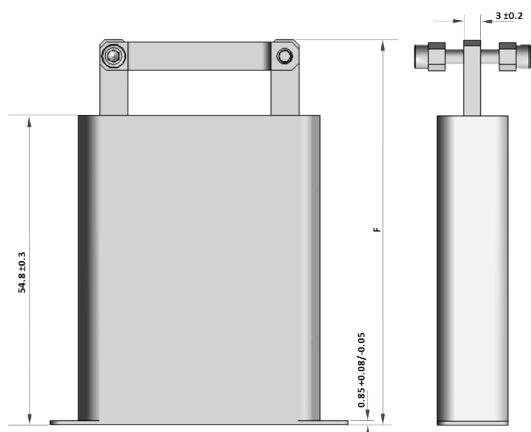
DESCRIPTION AND PART NUMBERS

SHELL FINISH	SIZE	C&K DESCRIPTION	C&K P/N
 Electroless Nickel	E	DE-BCKS-09-NMB-A174-FR022	C115366-2632B
	A	DA-BCKS-09-NMB-A174-FR022	C115366-2633B
	B	DB-BCKS-09-NMB-A174-FR022	C115366-2634B
	C	DC-BCKS-09-NMB-A174-FR022	C115366-2635B
	D	DD-BCKS-09-NMB-A174-FR022	C115366-2636B
	F	DF-BCKS-08-NMB-A174-FR022	C115366-2694B
 Gold	E	DE-BCKS-09-NMB-FR172-FR022	C115366-2632A
	A	DA-BCKS-09-NMB-FR172-FR022	C115366-2633A
	B	DB-BCKS-09-NMB-FR172-FR022	C115366-2634A
	C	DC-BCKS-09-NMB-FR172-FR022	C115366-2635A
	D	DD-BCKS-09-NMB-FR172-FR022	C115366-2636A
	F	DF-BCKS-08-NMB-FR172-FR022	C115366-2694A

SADDLE CLAMP TOP ENTRY

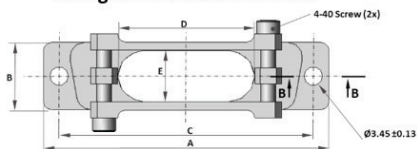


DIMENSIONS AND WEIGHT

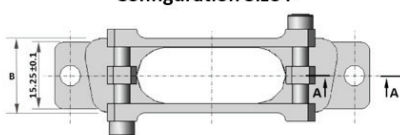


SIZE	A ±0.2	B ±0.15	C ±0.13	D ±0.3	E ±0.25	F ±0.50	WEIGHT (GRAMS)
E	30.68	12.50	24.99	9.50	9.50	66.75	15.5
A	39.01	12.50	33.32	18.10	9.50	66.75	19
B	52.91	12.50	47.04	25.40	9.50	68.35	23
C	69.19	12.50	63.50	34.90	9.50	68.35	29
D	66.80	15.30	61.11	35.70	11.90	68.35	33
F	69.30	17.30	63.50	47.00	13.90	68.35	37

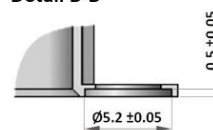
Configuration Sizes E-A-B-C-D



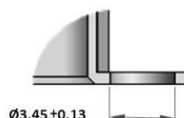
Configuration Size F



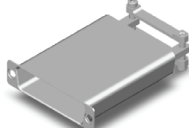
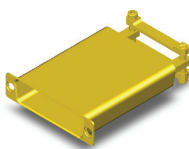
Detail B-B



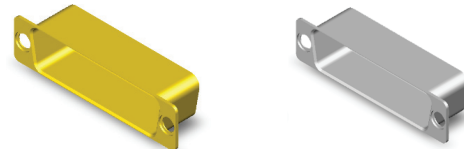
Detail A-A



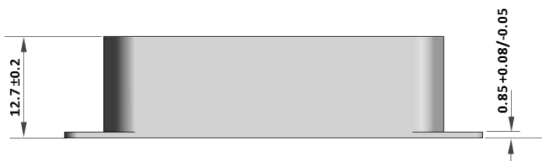
DESCRIPTION AND PART NUMBERS

SHELL FINISH	SIZE	C&K DESCRIPTION	C&K P/N
 Electroless Nickel	E	DE-BCKS-01-NMB-A174-FR022	C115366-2586B
	A	DA-BCKS-01-NMB-A174-FR022	C115366-2587B
	B	DB-BCKS-01-NMB-A174-FR022	C115366-2588B
	C	DC-BCKS-01-NMB-A174-FR022	C115366-2589B
	D	DD-BCKS-01-NMB-A174-FR022	C115366-2590B
	F	DF-BCKS-01-NMB-A174-FR022	C115366-2687B
 Gold	E	DE-BCKS-01-NMB-FR172-FR022	C115366-2586A
	A	DA-BCKS-01-NMB-FR172-FR022	C115366-2587A
	B	DB-BCKS-01-NMB-FR172-FR022	C115366-2588A
	C	DC-BCKS-01-NMB-FR172-FR022	C115366-2589A
	D	DD-BCKS-01-NMB-FR172-FR022	C115366-2590A
	F	DF-BCKS-01-NMB-FR172-FR022	C115366-2687A

CLOSED - EXTRA SHORTING CAN

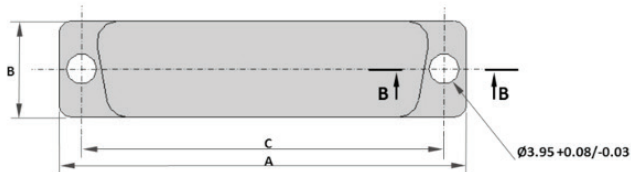


DIMENSIONS AND WEIGHT

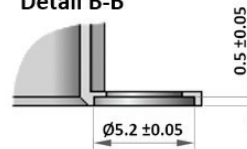


SIZE	A ±0.2	B ±0.15	C ±0.13	WEIGHT (GRAMS)
E	30.68	12.50	24.99	8
A	39.01	12.50	33.32	10
B	52.91	12.50	47.04	14
C	69.19	12.50	63.50	20
D	66.80	15.30	61.11	26
F	69.30	17.30	63.50	30

Configuration Sizes E-A-B-C-D



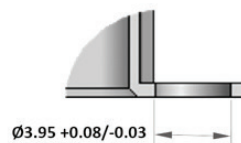
Detail B-B




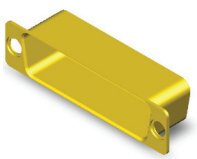
Configuration Size F



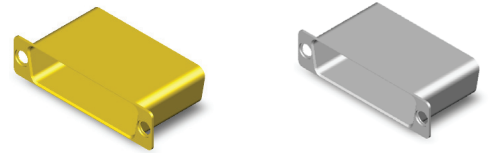
Detail A-A



DESCRIPTION AND PART NUMBERS

SHELL FINISH	SIZE	C&K DESCRIPTION	C&K P/N
 Electroless Nickel	E	DE-BCKS-10-NMB-A174-FR022	C115366-2637B
	A	DA-BCKS-10-NMB-A174-FR022	C115366-2638B
	B	DB-BCKS-10-NMB-A174-FR022	C115366-2639B
	C	DC-BCKS-10-NMB-A174-FR022	C115366-2640B
	D	DD-BCKS-10-NMB-A174-FR022	C115366-2641B
	F	DF-BCKS-10-NMB-A174-FR022	C115366-2695B
 Gold	E	DE-BCKS-10-NMB-FR172-FR022	C115366-2637A
	A	DA-BCKS-10-NMB-FR172-FR022	C115366-2638A
	B	DB-BCKS-10-NMB-FR172-FR022	C115366-2639A
	C	DC-BCKS-10-NMB-FR172-FR022	C115366-2640A
	D	DD-BCKS-10-NMB-FR172-FR022	C115366-2641A
	F	DF-BCKS-10-NMB-FR172-FR022	C115366-2695A

CLOSED - SHORTING CAN

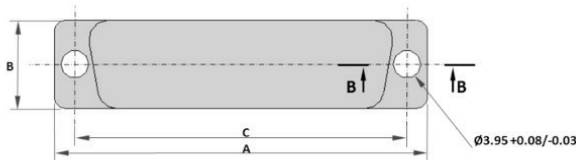


DIMENSIONS AND WEIGHT

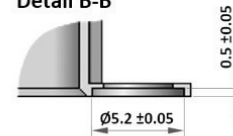


SIZE	A ±0.2	B ±0.15	C ±0.13	WEIGHT (GRAMS)
E	30.68	12.50	24.99	8
A	39.01	12.50	33.32	10
B	52.91	12.50	47.04	14
C	69.19	12.50	63.50	20
D	66.80	15.30	61.11	26
F	69.30	17.30	63.50	30

Configuration Sizes E-A-B-C-D



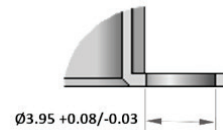
Detail B-B




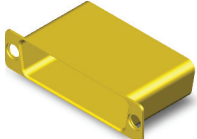
Configuration Size F



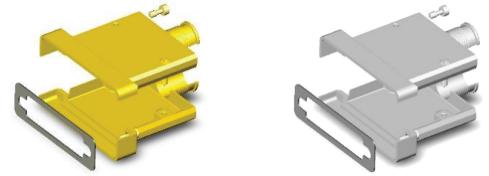
Detail A-A



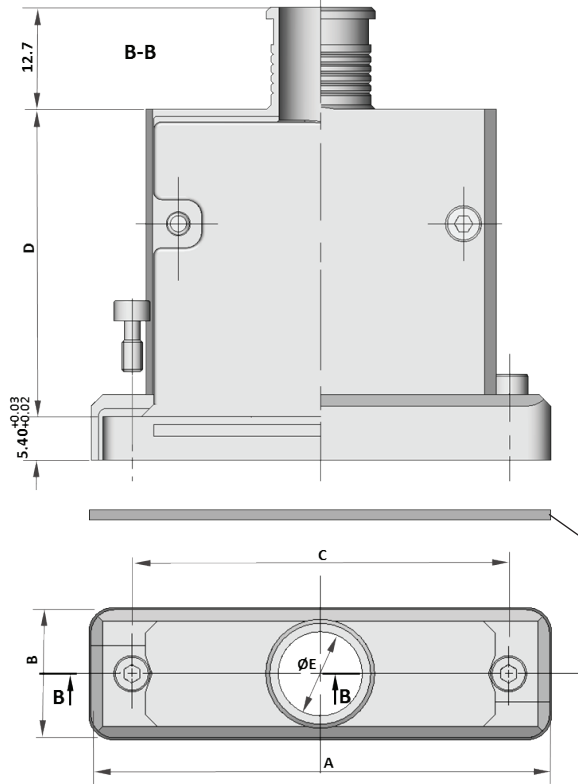
DESCRIPTION AND PART NUMBERS

SHELL FINISH	SIZE	C&K DESCRIPTION	C&K P/N
 Electroless Nickel	E	DE-BCKS-02-NMB-A174-FR022	C115366-2591B
	A	DA-BCKS-02-NMB-A174-FR022	C115366-2592B
	B	DB-BCKS-02-NMB-A174-FR022	C115366-2593B
	C	DC-BCKS-02-NMB-A174-FR022	C115366-2594B
	D	DD-BCKS-02-NMB-A174-FR022	C115366-2595B
	F	DF-BCKS-02-NMB-A174-FR022	C115366-2688B
 Gold	E	DE-BCKS-02-NMB-FR172-FR022	C115366-2591A
	A	DA-BCKS-02-NMB-FR172-FR022	C115366-2592A
	B	DB-BCKS-02-NMB-FR172-FR022	C115366-2593A
	C	DC-BCKS-02-NMB-FR172-FR022	C115366-2594A
	D	DD-BCKS-02-NMB-FR172-FR022	C115366-2595A
	F	DF-BCKS-02-NMB-FR172-FR022	C115366-2688A

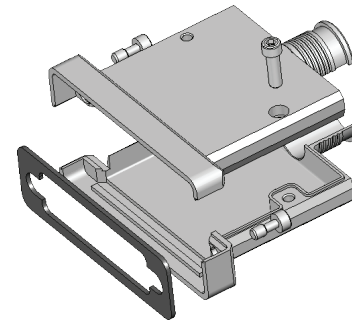
TOP CYLINDRICAL ENTRY - EMI APPLICATION REAR MOUNTING



DIMENSIONS AND WEIGHT



SIZE	A ±0.25	B ±0.25	C ±0.13	D ±0.30	E ±0.25	WEIGHT (GRAMS)
E	35.03	15.98	24.99	32.70	6.73	21
A	43.36	15.98	33.32	32.70	9.90	26
B	57.25	15.98	47.04	38.30	10.54	30
C	73.53	15.98	63.50	38.30	10.54	35
D	71.14	18.75	61.11	38.30	13.33	40
F	73.50	20.80	63.50	38.30	15.40	45



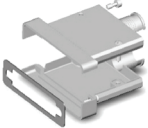
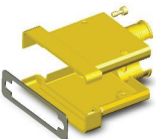
EMI Gaskets (3x):

- 1.40±0.1mm - to use with panel thickness within 0.77mm and 1.16mm
- 1.00±0.1mm - to use with panel thickness within 1.16mm and 1.55mm
- 0.60±0.1mm - to use with panel thickness within 1.55mm and 1.98mm

Backshell delivered with:

- 3 EMI gaskets to use according to panel thickness
- 2 Jackscrews 4-40 NC 2A Hexagonal Hole Head
- 2 screwlocks to fix the shells

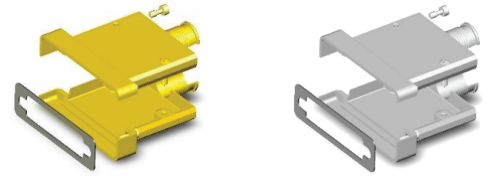
DESCRIPTION AND PART NUMBERS

SHELL FINISH	SIZE	C&K DESCRIPTION	C&K P/N
 Electroless Nickel	E	DE-BCKS-04-NMB-A174-FR022	C115366-2601B
	A	DA-BCKS-04-NMB-A174-FR022	C115366-2602B
	B	DB-BCKS-04-NMB-A174-FR022	C115366-2603B
	C	DC-BCKS-04-NMB-A174-FR022	C115366-2604B
	D	DD-BCKS-04-NMB-A174-FR022	C115366-2605B
	F	DF-BCKS-04-NMB-A174-FR022	C115366-2690B
 Gold	E	DE-BCKS-04-NMB-FR172-FR022	C115366-2601A
	A	DA-BCKS-04-NMB-FR172-FR022	C115366-2602A
	B	DB-BCKS-04-NMB-FR172-FR022	C115366-2603A
	C	DC-BCKS-04-NMB-FR172-FR022	C115366-2604A
	D	DD-BCKS-04-NMB-FR172-FR022	C115366-2605A
	F	DF-BCKS-04-NMB-FR172-FR022	C115366-2690A

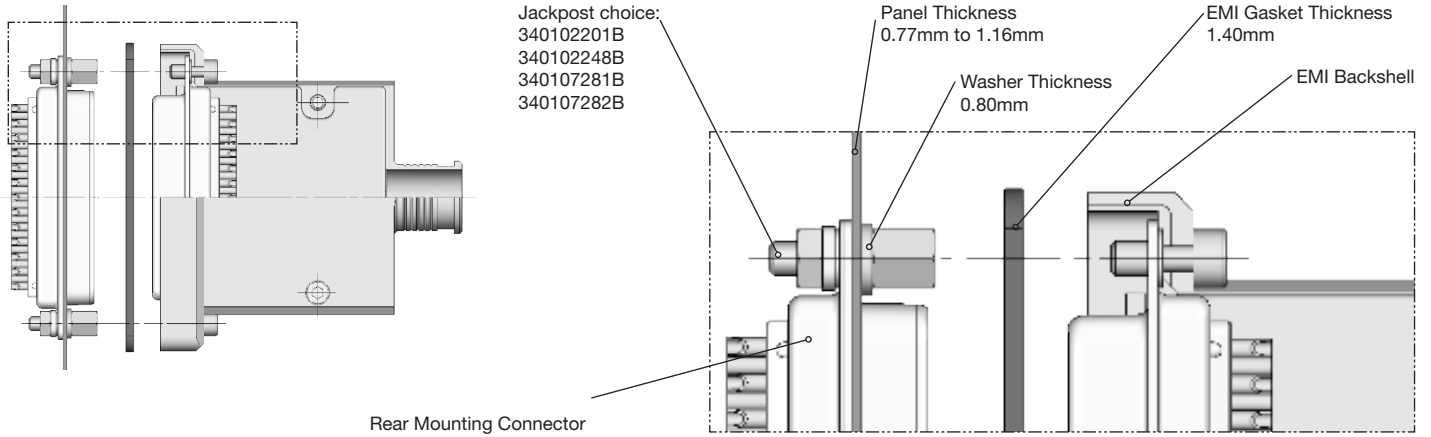


Dimensions shown in: mm
Specifications and dimensions subject to change

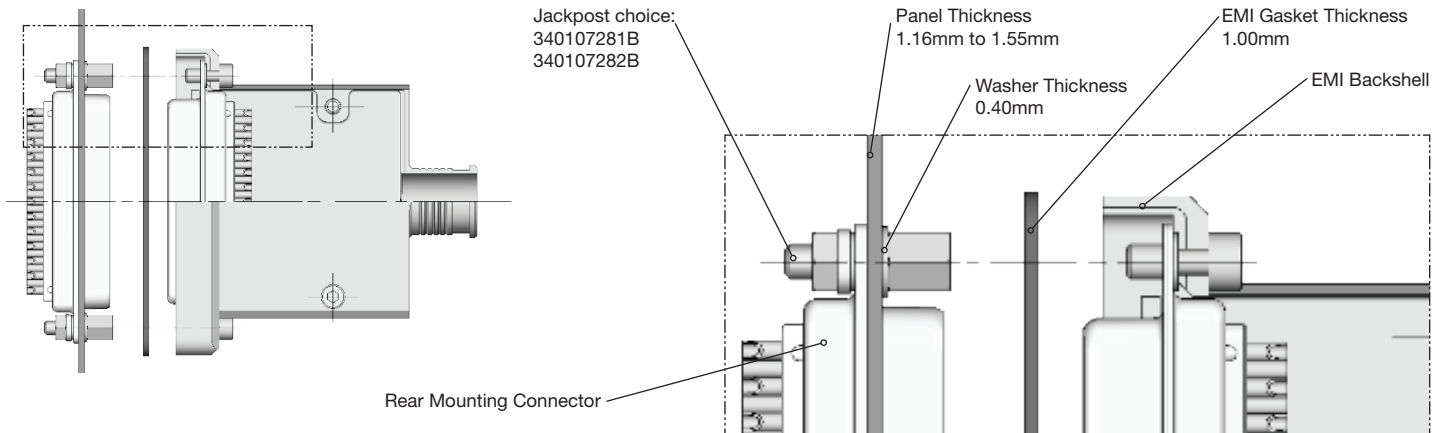
TOP CYLINDRICAL ENTRY - EMI APPLICATION REAR MOUNTING



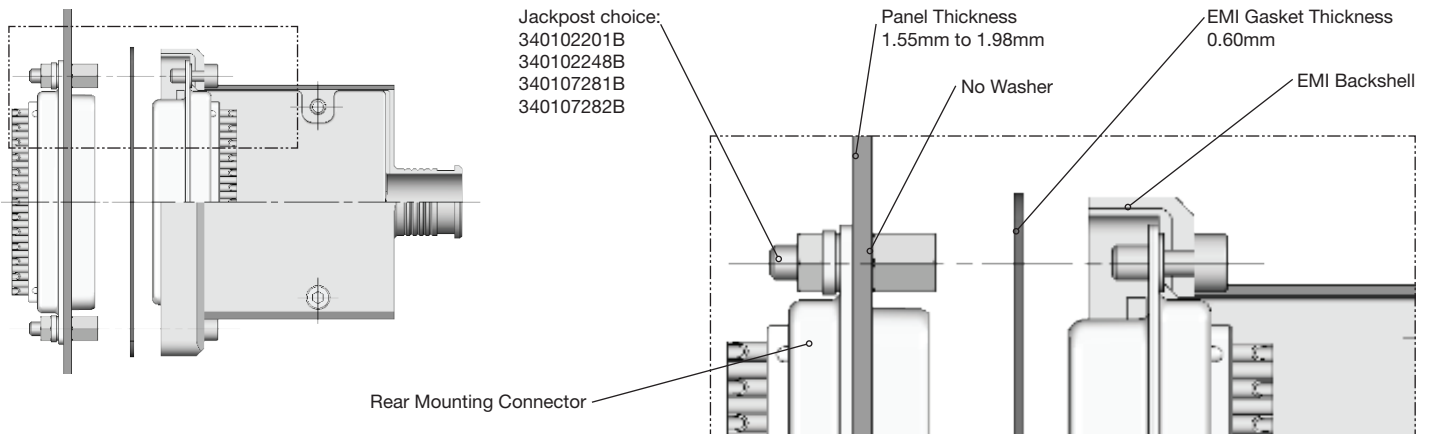
MOUNTING RECOMMENDATION - PANEL THICKNESS WITHIN 0.77MM AND 1.16MM



MOUNTING RECOMMENDATION - PANEL THICKNESS WITHIN 1.16MM AND 1.55MM

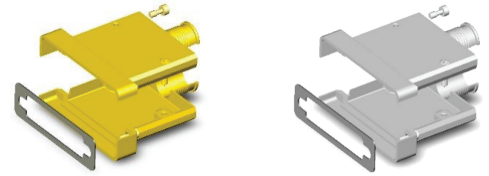


MOUNTING RECOMMENDATION - PANEL THICKNESS WITHIN 1.55MM AND 1.98MM

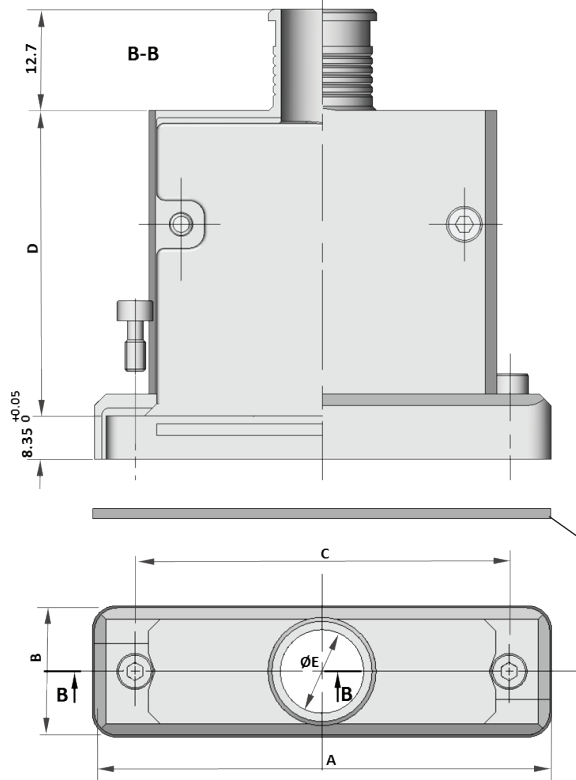


Dimensions shown in: mm
Specifications and dimensions subject to change

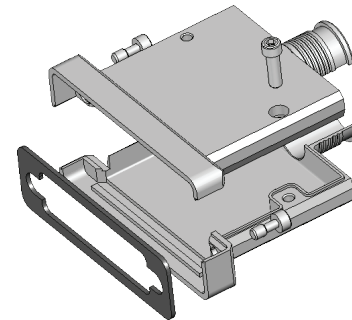
TOP CYLINDRICAL ENTRY - EMI APPLICATION FRONT MOUNTING



DIMENSIONS AND WEIGHT



SIZE	A ±0.25	B ±0.25	C ±0.13	D ±0.30	E ±0.25	WEIGHT (GRAMS)
E	35.03	15.98	24.99	32.70	6.73	21
A	43.36	15.98	33.32	32.70	9.90	26
B	57.25	15.98	47.04	38.30	10.54	30
C	73.53	15.98	63.50	38.30	10.54	35
D	71.14	18.75	61.11	38.30	13.33	40
F	73.50	20.80	63.50	38.30	15.40	45

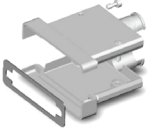
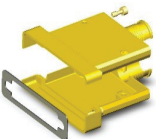


EMI Gaskets:
0.60±0.1mm thickness

Backshell delivered with:

- 1 EMI gasket
- 2 Jackscrews 4-40 NC 2A Hexagonal Hole Head
- 2 screwlocks to fix the shells

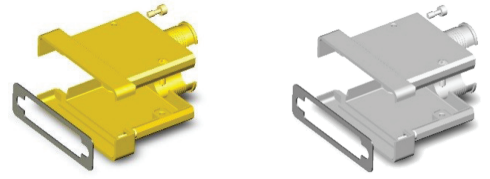
DESCRIPTION AND PART NUMBERS

SHELL FINISH	SIZE	C&K DESCRIPTION	C&K P/N
 Electroless Nickel	E	DE-BCKS-03-NMB-A174-FR022	C115366-2596B
	A	DA-BCKS-03-NMB-A174-FR022	C115366-2597B
	B	DB-BCKS-03-NMB-A174-FR022	C115366-2598B
	C	DC-BCKS-03-NMB-A174-FR022	C115366-2599B
	D	DD-BCKS-03-NMB-A174-FR022	C115366-2600B
	F	DF-BCKS-03-NMB-A174-FR022	C115366-2689B
 Gold	E	DE-BCKS-03-NMB-FR172-FR022	C115366-2596A
	A	DA-BCKS-03-NMB-FR172-FR022	C115366-2597A
	B	DB-BCKS-03-NMB-FR172-FR022	C115366-2598A
	C	DC-BCKS-03-NMB-FR172-FR022	C115366-2599A
	D	DD-BCKS-03-NMB-FR172-FR022	C115366-2600A
	F	DF-BCKS-03-NMB-FR172-FR022	C115366-2689A

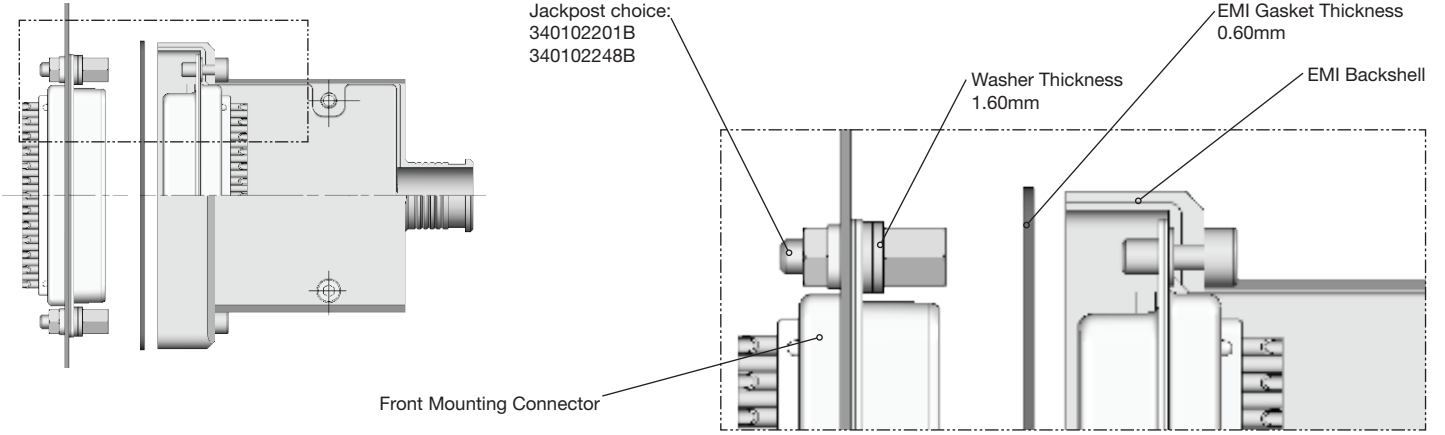


*Dimensions shown in: mm
Specifications and dimensions subject to change*



TOP CYLINDRICAL ENTRY - EMI APPLICATION FRONT MOUNTING



MOUNTING RECOMMENDATION





UNIVERSAL MALE SCREWLOCK - SLOTTED HEAD	C&K DESCRIPTION	C&K P/N
	D115440-0165-FR022	C115440-0165A
UNIVERSAL MALE SCREWLOCK - HEXAGONAL HOLE HEAD	ESA/ESCC DESCRIPTION	C&K P/N
	D115440-0167-FR022	C115440-0167A

AMERICAS

Tel: +1.617.969.3700

ASIA

Tel: +852.3713.5288

EUROPE

Tel: +33.1.60.24.51.51



X-ON Electronics

Largest Supplier of Electrical and Electronic Components

Click to view similar products for [Switch Accessories](#) category:

Click to view products by [C&K](#) manufacturer:

Other Similar products are found below :

[896809000](#) [01500](#) [01010](#) [01501](#) [7101MD9V30B](#) [7103KZBE](#) [7103P3YAVGE](#) [7209MD9ABE](#) [7209SY9AQE](#) [7209SYCBE](#) [7303KZQE](#)
[F1302](#) [F1403](#) [760201000](#) [764300000](#) [785105000](#) [785106000](#) [789009000](#) [7T0062](#) [7T0073](#) [MJ1216](#) [MJ33](#) [MJ612](#) [849PT01A](#)
[91321314655637182-1-MEV](#) [A0107X](#) [A0141A](#) [A0141E](#) [A0142M2SP](#) [A0142N5](#) [A0143G](#) [A0143H](#) [A0161G](#) [A0162A](#) [A0162F](#) [A019307](#)
[A01RTC8](#) [A0214X](#) [A0215X](#) [A02504](#) [A02512](#) [A0261A](#) [A0263D](#) [A029303](#) [A02MXB](#) [A168P1](#) [A274](#) [A3A-7310](#) [A3PA571124E](#) [A466](#)