

# DS Series Detect Switch

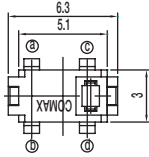


## Features/Benefits

- Compact design
- Low actuation force
- Detect mechanical movement
- Left and right options
- Right angle options

## Typical Applications

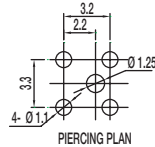
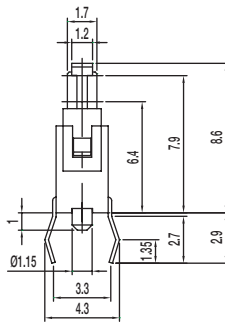
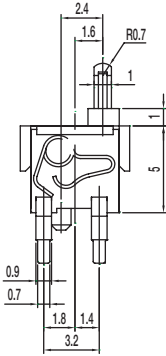
- Computer peripherals
- Office equipment
- Consumer electronics
- Appliances
- Audio and visual equipment



PART NUMBER	PACKAGING	SCHEMATIC
<b>DS-02005</b>	1,000 pieces	1P-1T

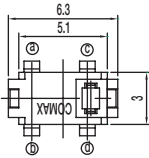
## Specifications

CONTACT ARRANGEMENT: SPST, NO  
 CONTACT RATING: 100mA @ 30 VDC  
 OPERATING LIFE: 50,000 cycles  
 OPERATING FORCE: 50 gf max.  
 PRE-TRAVEL: 0.7 mm  
 TOTAL TRAVEL: 2.6 mm  
 INITIAL CONTACT RESISTANCE: 1  $\Omega$  max.  
 INSULATION RESISTANCE: 100 M  $\Omega$  min. @ 100 VDC 60 sec.  
 DIELECTRIC STRENGTH: 100 V AC (50-60Hz) 60 sec.  
 OPERATING TEMPERATURE: -40°C to +85°C.



## Materials

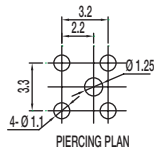
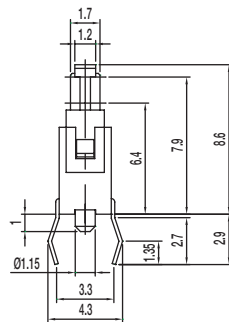
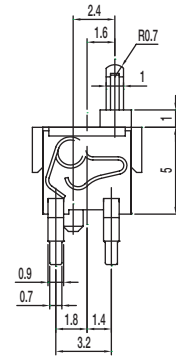
KNOB: PA  
 COVER: PA  
 SPRING: Gold plated, copper alloy  
 HOUSING: PA  
 TERMINAL: Silver plated, copper alloy



PART NUMBER	PACKAGING	SCHEMATIC
<b>DS-02005 (30)</b>	1,000 pieces	1P-1T

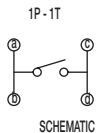
## Specifications

CONTACT ARRANGEMENT: SPST, NO  
 CONTACT RATING: 100mA @ 30 VDC  
 OPERATING LIFE: 50,000 cycles  
 OPERATING FORCE: 30 gf max.  
 PRE-TRAVEL: 0.7 mm  
 TOTAL TRAVEL: 2.2 mm  
 INITIAL CONTACT RESISTANCE: 1  $\Omega$  max.  
 INSULATION RESISTANCE: 100 M  $\Omega$  min. @ 100 VDC 60 sec.  
 DIELECTRIC STRENGTH: 100 V AC (50-60Hz) 60 sec.  
 OPERATING TEMPERATURE: -40°C to +85°C.



## Materials

KNOB: PA  
 COVER: PA  
 SPRING: Gold plated, copper alloy  
 HOUSING: PA  
 TERMINAL: Silver plated, copper alloy



Detect

# DS Series Detect Switch



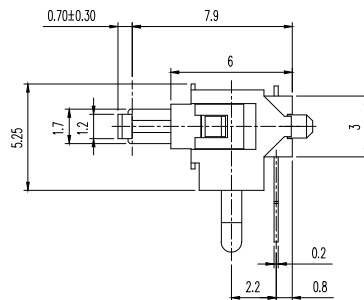
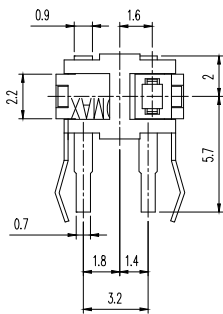
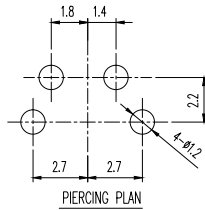
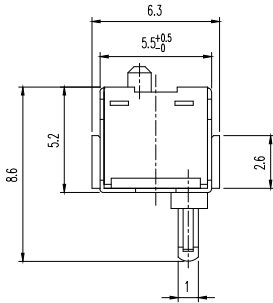
PART NUMBER	PACKAGING	SCHEMATIC
<b>DS-02005-A</b>	1,000 pieces	1P-1T N.O.

## Specifications

CONTACT ARRANGEMENT: SPST, NO  
 CONTACT RATING: 100mA @ 30 VDC  
 OPERATING LIFE: 50,000 cycles  
 OPERATING FORCE: 50 gf max.  
 PRE-TRAVEL: 0.7 mm  
 TOTAL TRAVEL: 2.6 mm  
 INITIAL CONTACT RESISTANCE: 1 Ω max.  
 INSULATION RESISTANCE: 100 M Ω min. @ 100 VDC 60 sec.  
 DIELECTRIC STRENGTH: 100 V AC (50-60Hz) 60 sec.  
 OPERATING TEMPERATURE: -40°C to +85°C.

## Materials

KNOB: PA  
 COVER: PA  
 SPRING: Gold plated, copper alloy  
 HOUSING: PA  
 TERMINAL: Silver plated, copper alloy



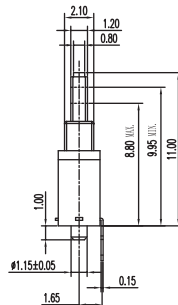
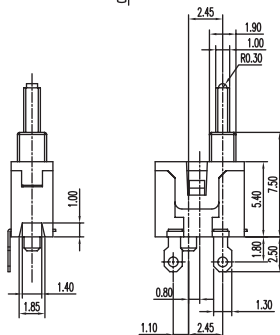
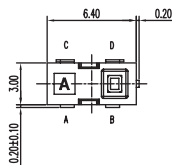
PART NUMBER	PACKAGING	SCHEMATIC
<b>DS-21805</b>	2,500 pieces	C D A B N.O.

## Specifications

CONTACT ARRANGEMENT: SPDT  
 CONTACT RATING: 5mA @ 5 VDC  
 OPERATING LIFE: 100,000 cycles  
 OPERATING FORCE: 36 gf  
 TOTAL TRAVEL: 2.20 mm  
 INITIAL CONTACT RESISTANCE: 1 Ω max.  
 INSULATION RESISTANCE: 100 M Ω min. @ 100 VDC 60 sec.  
 DIELECTRIC STRENGTH: 100 V AC (50-60Hz) 60 sec.  
 OPERATING TEMPERATURE: -20°C to +70°C.

## Materials

KNOB: POM  
 COVER: PA46  
 SPRING: Silver plated  
 HOUSING: PPS  
 TERMINAL: Silver plated

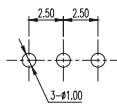
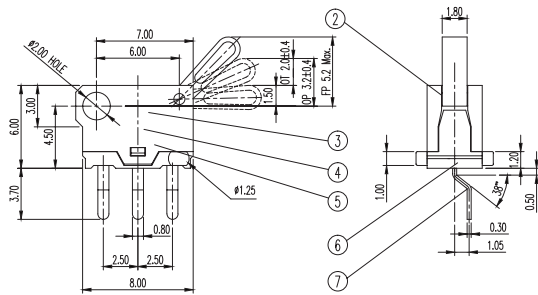
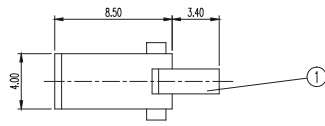




# DS Series Detect Switch



PART NUMBER	PACKAGING	SCHEMATIC
<b>DS-080</b>	1,000 pieces	1P - 2T  1P - 2T 2 1 N.O.



PIERCING PLAN

## Specifications

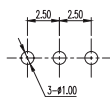
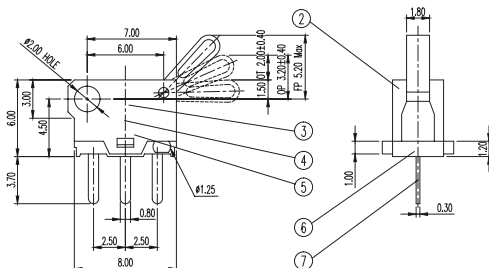
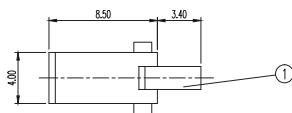
CONTACT ARRANGEMENT: SPDT  
 CONTACT RATING: 100mA @ 30 VDC  
 OPERATING LIFE: 20,000 cycles  
 OPERATING FORCE: 30 ± 20 gf  
 OVER TRAVEL: 2.0 ± 0.40 mm  
 INITIAL CONTACT RESISTANCE: 200 m Ω max.  
 INSULATION RESISTANCE: 10 M Ω min. @ 250 VDC 60 sec.  
 DIELECTRIC STRENGTH: 250 V AC (50-60Hz) 60 sec.  
 OPERATING TEMPERATURE: -20°C to +70°C.

## Materials

KNOB: POM  
 COVER: PA46  
 SLIDER: PBT  
 HOUSING: PA46  
 TERMINAL: Silver plated



PART NUMBER	PACKAGING	SCHEMATIC
<b>DS-080-C PA</b>	1,000 pieces	1P - 2T  1P - 2T 2 1 N.O.



PIERCING PLAN

## Specifications

CONTACT ARRANGEMENT: SPDT  
 CONTACT RATING: 100mA @ 30 VDC  
 OPERATING LIFE: 20,000 cycles  
 OPERATING FORCE: 30 ± 20 gf  
 OVER TRAVEL: 2.0 ± 0.40 mm  
 INITIAL CONTACT RESISTANCE: 200 m Ω max.  
 INSULATION RESISTANCE: 10 M Ω min. @ 250 VDC 60 sec.  
 DIELECTRIC STRENGTH: 250 V AC (50-60Hz) 60 sec.  
 OPERATING TEMPERATURE: -20°C to +70°C.

## Materials

KNOB: POM  
 COVER: PA46  
 SLIDER: PBT  
 HOUSING: PA46  
 TERMINAL: Silver plated

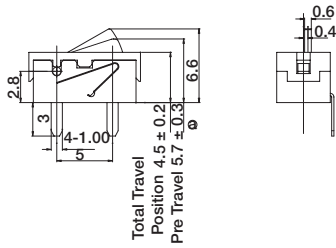
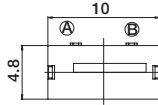


Detect

# DS Series Detect Switch



PART NUMBER	PACKAGING	SCHEMATIC
<b>DS-09005-02 BK</b>	500 pieces	 N.O.



## Specifications

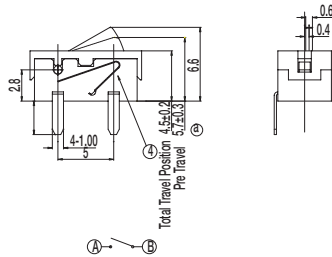
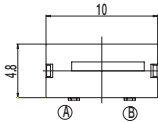
CONTACT ARRANGEMENT: SPST  
 CONTACT RATING: 1mA @ 5 VDC  
 OPERATING LIFE: 100,000 cycles  
 OPERATING FORCE: 50 gf max.  
 TOTAL TRAVEL: 4.5±0.2 mm  
 INITIAL CONTACT RESISTANCE: 500 m Ω max.  
 INSULATION RESISTANCE: 100 M Ω min. @ 500 VDC 60 sec.  
 DIELECTRIC STRENGTH: 500 V AC (50-60Hz) 60 sec.  
 OPERATING TEMPERATURE: -20°C to +70°C.

## Materials

LEVER: POM  
 COVER: PA  
 HOUSING: PA  
 TERMINAL: Silver plated



PART NUMBER	PACKAGING	SCHEMATIC
<b>DS-09005-02 RP</b>	500 pieces	 N.O.



## Specifications

CONTACT ARRANGEMENT: SPST  
 CONTACT RATING: 1mA @ 5 VDC  
 OPERATING LIFE: 100,000 cycles  
 OPERATING FORCE: 50 gf max.  
 TOTAL TRAVEL: 4.5±0.2 mm  
 INITIAL CONTACT RESISTANCE: 500 m Ω max.  
 INSULATION RESISTANCE: 100 M Ω min. @ 500 VDC 60 sec.  
 DIELECTRIC STRENGTH: 500 V AC (50-60Hz) 60 sec.  
 OPERATING TEMPERATURE: -20°C to +70°C.

## Materials

LEVER: POM  
 COVER: PA  
 HOUSING: PA  
 TERMINAL: Silver plated



Detect

Detect

## X-ON Electronics

Largest Supplier of Electrical and Electronic Components

*Click to view similar products for [Switch Accessories](#) category:*

*Click to view products by [C&K](#) manufacturer:*

Other Similar products are found below :

[896809000](#) [01500](#) [01010](#) [01501](#) [7101MD9V30B](#) [7103KZBE](#) [7103P3YAVGE](#) [7209MD9ABE](#) [7209SY9AQE](#) [7209SYCBE](#) [7303KZQE](#)  
[F1302](#) [F1403](#) [760201000](#) [764300000](#) [785105000](#) [785106000](#) [789009000](#) [7T0062](#) [7T0073](#) [MJ1216](#) [MJ33](#) [MJ612](#) [849PT01A](#)  
[91321314655637182-1-MEV](#) [A0107X](#) [A0141A](#) [A0141E](#) [A0142M2SP](#) [A0142N5](#) [A0143G](#) [A0143H](#) [A0161G](#) [A0162A](#) [A0162F](#) [A019307](#)  
[A01RTC8](#) [A0214X](#) [A0215X](#) [A02504](#) [A02512](#) [A0261A](#) [A0263D](#) [A029303](#) [A02MXB](#) [A168P1](#) [A274](#) [A3A-7310](#) [A3PA571124E](#) [A466](#)