

# HDP Series Micro Mini Side Actuated Surface Mount Detect Switches



## Features/Benefits

- Low profile
- Side actuation
- Right and left options available
- Low actuation force
- Lead free and halogen free

## Typical Applications

- Consumer electronics
- Computers
- Medical devices
- Mobile Communications
- ATCA and MicroTCA devices

## Specifications

CONTACT RATING: 1 mA 5 VDC  
 MECHANICAL AND ELECTRICAL LIFE: 100,000 cycles min.  
 CONTACT RESISTANCE: < 500 m Ω initial.  
 INSULATION RESISTANCE: > 100 M Ω  
 OPERATING TEMPERATURE: -20°C to + 70°C  
 STORAGE TEMPERATURE: -30°C to + 80°C  
 PACKAGING: tape & reel; 2,500 per reel.  
 TRAVEL:  
 Pre-travel 0.15 mm min.  
 "ON" starting position 2.96 +/- 0.25 mm  
 Total: 1.3 mm  
 Mechanical: 1.9 mm

## Materials

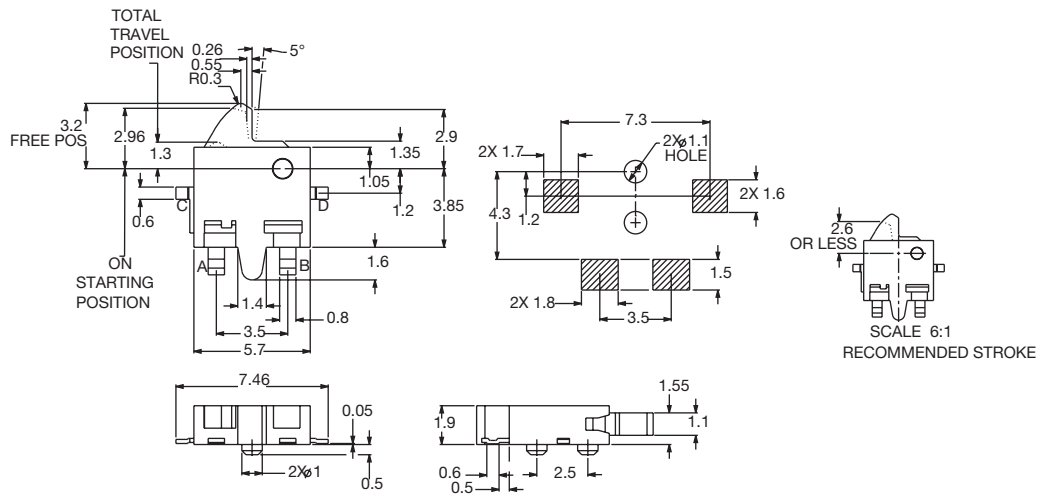
BASE: PA 46 (UL94HB) - halogen free  
 ACTUATOR: PA 46 (UL94HB) - halogen free  
 HDP001R - black body/actuator  
 HDP001L - grey body/actuator  
 MOVABLE CONTACTS: Stainless Steel, Silver over nickel plate.  
 FIXED CONTACTS/TERMINALS: Phosphor Bronze, Silver plate.

**NOTE:** Specifications and materials listed above are for switches with standard options. For information on specific and custom switches, consult Customer Service Center.

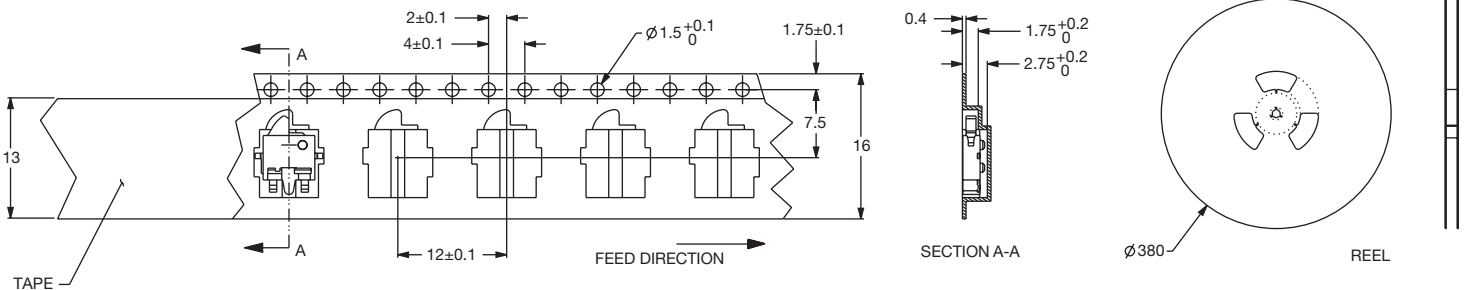
## Build-A-Switch

Complete part numbers for HDP Series are shown below.

PART NUMBER	PACKAGING	SCHEMATIC
<b>HDP001R</b> Black body/ actuator	TAPE & REEL	



Detect

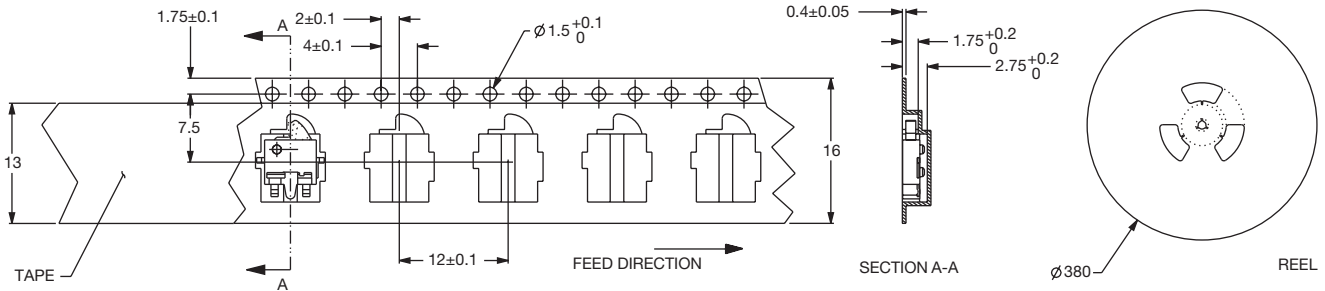
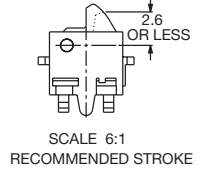
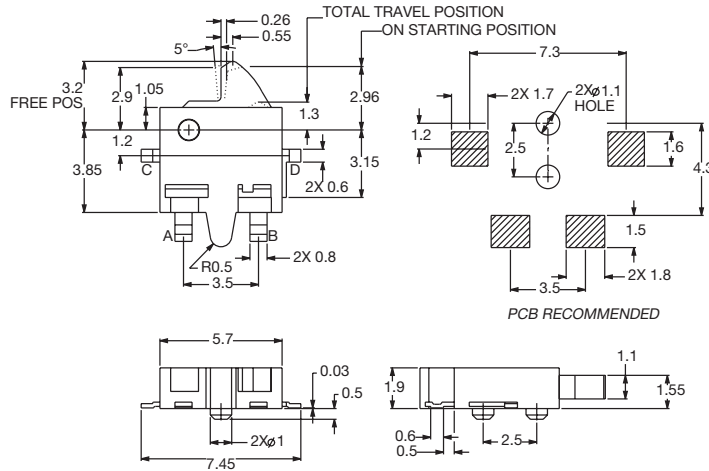


Dimensions are shown: mm  
 Specifications and dimensions subject to change

# HDP Series Micro Mini Side Actuated Surface Mount Detect Switches



PART NUMBER	PACKAGING	SCHEMATIC
<b>HDP001L</b>	TAPE & REEL	
Grey body/ actuator		



## X-ON Electronics

Largest Supplier of Electrical and Electronic Components

*Click to view similar products for [Detector Switches](#) category:*

*Click to view products by [C&K](#) manufacturer:*

Other Similar products are found below :

[E3S-LS5C4S](#) [SPVQ850300](#) [21075-6](#) [SPVQ860100](#) [K2CU-F20A-F AC220](#) [D3DM0005H](#) [D3DM0001E](#) [D3DM0003A](#) [HARB0012](#) [PP2-7H1-2D2](#) [PP1-FB7-2D2](#) [PP2-7U1-2B2](#) [PP1-ET7-2B2](#) [MR1000AWA](#) [MR1000BWA](#) [ESE-31R11T](#) [ESE-23F101](#) [ESE-13V01D](#) [ESE-13V01C](#) [ESE-13V01A](#) [ESE-13H01B](#) [ESE-11MH1T](#) [ESE-11MH2T](#) [ESE-11MV1](#) [ESE-31L11T](#) [HDS001R](#) [SPVL110102](#) [ESE-11MV1T](#) [ESE-13V01B](#) [ESE-23J101](#) [SPPW811200](#) [ESE-58R61B](#) [SPVQ361300](#) [ESE-58R11B](#) [SPVT210201](#) [SPVL120101](#) [ESE-24CMV9T](#) [DS080](#) [DS0900502RP](#) [T0-SCB22MP1NC1](#) [T0-SCB22MP1NSX](#) [ESE-13H01A](#) [ESE-13H01C](#) [ESE-13H01D](#) [ESE-18R63D](#) [ESE-24CMH6T](#) [SPVN210101](#) [SPPB110300](#) [SPPB120200](#) [SPPB1A0100](#)