

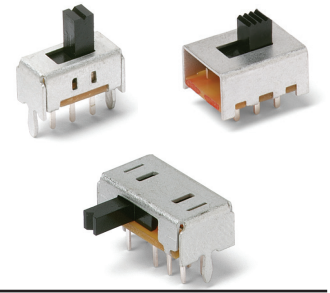
# OS Series Miniature Slide Switches

## Features/Benefits

- Variety of actuators & terminations
- PC and panel mounting
- Shorting or non-shorting contacts
- RoHS compliant
- Halogen free material

## Typical Applications

- Test & measurement equipment
- Computer peripherals & network products
- Consumer products



## Specifications

CONTACT RATING: See individual parts.  
 MECHANICAL & ELECTRICAL LIFE: 10,000 cycles.  
 CONTACT RESISTANCE: 20 m Ω or less.  
 INSULATION RESISTANCE: 100 M Ω min. at 500 VDC.  
 DIELECTRIC STRENGTH: 500 VAC for 1 minute.  
 OPERATING TEMPERATURE: -30°C to +70°C.  
 PACKAGING: Bulk

\* For RoHS compatible switches contact customer service.

## Materials

BASE: Phenolic resin.  
 ACTUATOR: Standard: POM, Black.  
 High Temperature Option: PA46, Black.  
 HOUSING: SPCC Sn plated.  
 MOVABLE CONTACT: Copper alloy, silver plated.  
 STATIONARY CONTACTS: Brass, silver plated.  
 TERMINALS: Brass, silver plated.  
 TERMINAL SEALED.

**NOTE:** Specifications and materials listed above are for switches with standard options. For information on specific and custom switches, consult Customer Service Center.

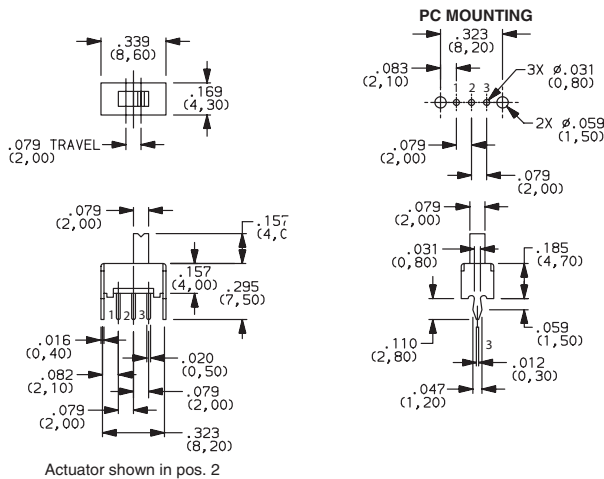
## How To Order

Complete part numbers for OS Series Slide Switches are shown on pages I-37 through I-43.

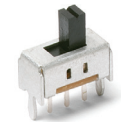
| PART NUMBER                               | RoHS      |            | SWITCH FUNCTION |       |
|---|-----------|------------|-----------------|-------|
|   | Compliant | Compatible | POS.1           | POS.2 |
| <b>OS102011MS2QN1</b><br>(non-shorting)   | YES       | NO         | ON              | ON    |
| <b>OS102011MS2QN1C*</b><br>(non-shorting) | YES       | YES        | ON              | ON    |
| <b>OS102011MS2QS1</b><br>(shorting)       | YES       | NO         | ON              | ON    |
| <b>OS102011MS2QS1C*</b><br>(shorting)     | YES       | YES        | ON              | ON    |
| CONN. TERMINALS                           |           |            | 1-2             | 2-3   |
| SCHEMATIC                                 |           |            |                 |       |
|   |           |            |                 |       |
| <b>SPDT</b>                               |           |            |                 |       |

CONTACT RATING: 0.1A @ 12 VDC

\* "C" option at the end of part number designates high temperature actuators



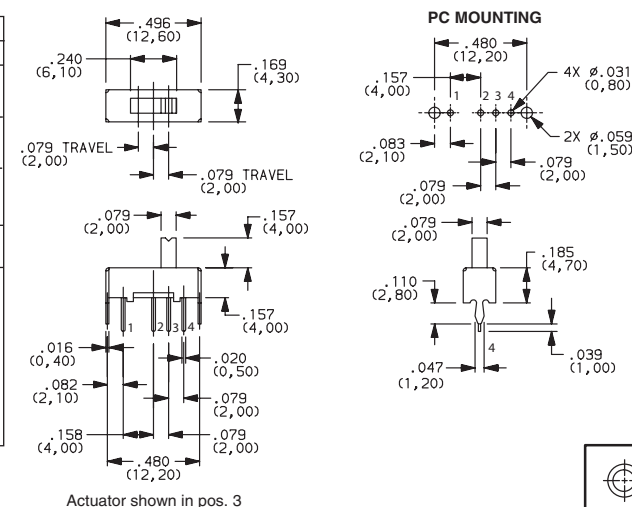
OS102011MS2QN1  
SPDT



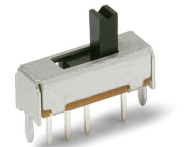
| PART NUMBER                                | RoHS      |            | SWITCH FUNCTION |       |       |
|--|-----------|------------|-----------------|-------|-------|
|  | Compliant | Compatible | POS.1           | POS.2 | POS.3 |
| <b>OS103011MS8QP1</b><br>(Non-specified)   | YES       | NO         | ON              | ON    | ON    |
| <b>OS103011MS8QP1C*</b><br>(Non-specified) | YES       | YES        | ON              | ON    | ON    |
| CONN. TERMINALS                            |           |            | 1-2             | 2-3   | 2-4   |
| SCHEMATIC                                  |           |            |                 |       |       |
|  |           |            |                 |       |       |
| <b>SP3T</b>                                |           |            |                 |       |       |

CONTACT RATING: 0.1A @ 12 VDC

\* "C" option at the end of part number designates high temperature actuators



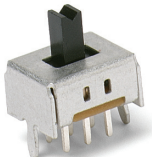
OS103011MS8QP1  
SP3T



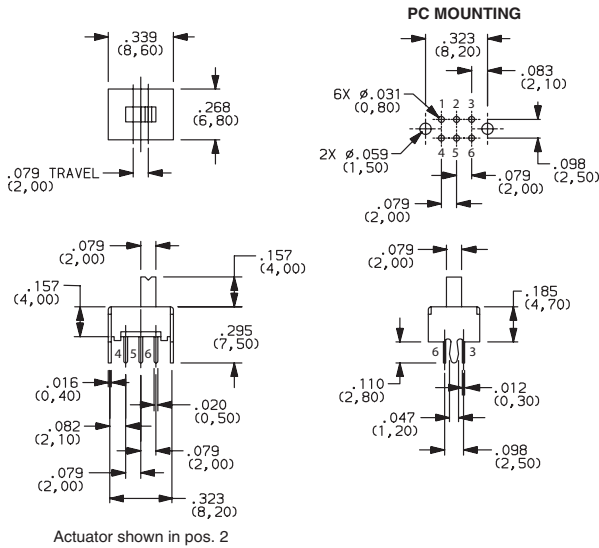
Dimensions are shown: Inches (mm)  
 Specifications and dimensions subject to change

# OS Series Miniature Slide Switches

Slide

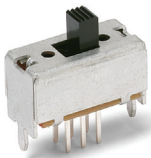


OS202011MS2QS1  
DPDT

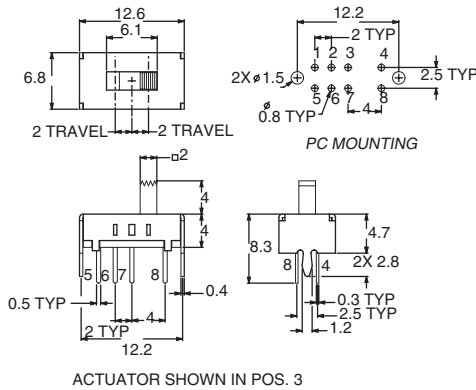


| PART NUMBER                   | RoHS Compliant | RoHS Compatible | SWITCH FUNCTION |          |
|-------------------------------|----------------|-----------------|-----------------|----------|
|                               |                |                 | POS.1           | POS.2    |
| OS202011MS2QS1 (Shorting)     | YES            | NO              | ON              | ON       |
| OS202011MS2QN1 (Non-shorting) | YES            | NO              | ON              | ON       |
| CONN. TERMINALS               |                |                 | 1-2, 4-5        | 2-3, 5-6 |
| SCHEMATIC                     |                |                 |                 |          |
| <b>DPDT</b>                   |                |                 |                 |          |

CONTACT RATING: 0.1A @ 12 VDC

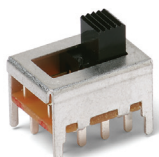


OS203011MS1QP1  
DP3T

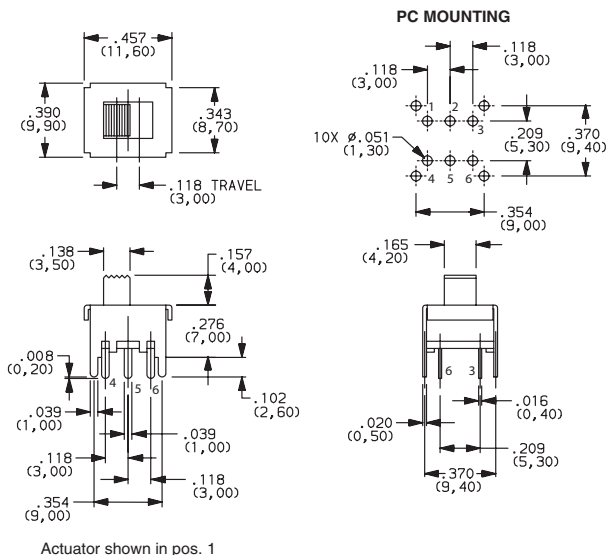


| PART NUMBER                    | ROHS Compliant | ROHS Compatible | SWITCH FUNCTION |          |          |
|--------------------------------|----------------|-----------------|-----------------|----------|----------|
|                                |                |                 | POS.1           | POS.2    | POS.3    |
| OS203011MS1QP1 (Non-specified) | YES            | NO              | ON              | ON       | ON       |
| CONN. TERMINALS                |                |                 | 1-3, 5-7        | 2-3, 6-7 | 3-4, 7-8 |
| SCHEMATIC                      |                |                 |                 |          |          |
| <b>DP3T</b>                    |                |                 |                 |          |          |

CONTACT RATING: 0.3A @ 30 VDC

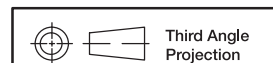


OS202013MT5QN1  
DPDT



| PART NUMBER                   | RoHS Compliant | RoHS Compatible | SWITCH FUNCTION |          |
|-------------------------------|----------------|-----------------|-----------------|----------|
|                               |                |                 | POS.1           | POS.2    |
| OS202013MT5QN1 (Non-shorting) | YES            | NO              | ON              | ON       |
| CONN. TERMINALS               |                |                 | 1-2, 4-5        | 2-3, 5-6 |
| SCHEMATIC                     |                |                 |                 |          |
| <b>DPDT</b>                   |                |                 |                 |          |

CONTACT RATING: 0.3A @ 30 VDC

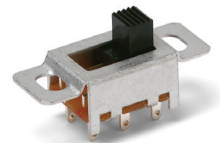
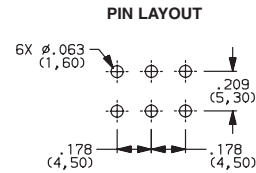
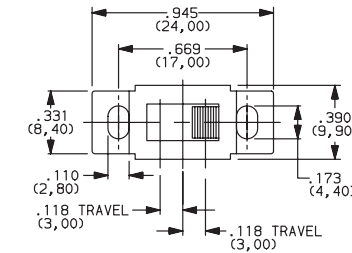


Dimensions are shown: Inch (mm)  
Specifications and dimensions subject to change

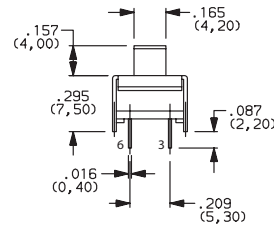
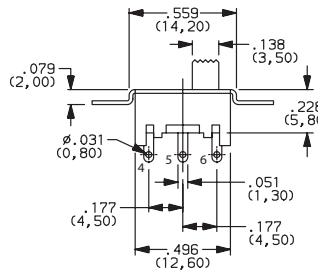
# OS Series Miniature Slide Switches

| PART NUMBER                             | ROHS Compliant | ROHS Compatible | SWITCH FUNCTION |       |          |
|---|----------------|-----------------|-----------------|-------|----------|
|   |                |                 | POS.1           | POS.2 | POS.3    |
| <b>OS203013MT7QN1</b><br>(Non-shorting) | YES            | NO              | ON              | OFF   | ON       |
| CONN. TERMINALS                         |                |                 | 1-2, 4-5        |       | 2-3, 5-6 |
| SCHEMATIC                               |                |                 |                 |       |          |
|   |                |                 |                 |       |          |
| <b>DP3T</b>                             |                |                 |                 |       |          |

CONTACT RATING: 0.3A @ 30 VDC



OS203013MT7QN1  
**DP3T**



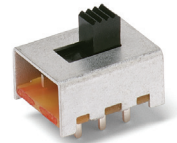
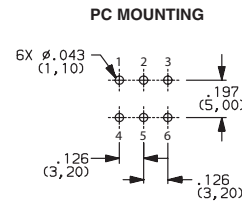
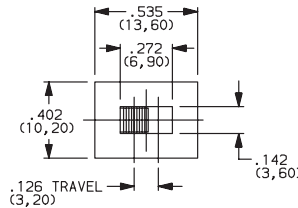
Actuator shown in pos. 3



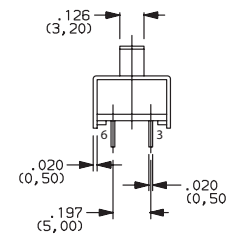
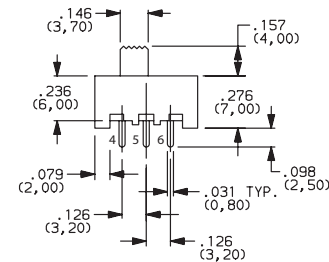
Slide

| PART NUMBER                             | RoHS Compliant | RoHS Compatible | SWITCH FUNCTION |          |
|---|----------------|-----------------|-----------------|----------|
|   |                |                 | POS.1           | POS.2    |
| <b>OS202013MT8QN1</b><br>(Non-shorting) | YES            | NO              | ON              | ON       |
| CONN. TERMINALS                         |                |                 | 1-2, 4-5        | 2-3, 5-6 |
| SCHEMATIC                               |                |                 |                 |          |
|   |                |                 |                 |          |
| <b>DPDT</b>                             |                |                 |                 |          |

CONTACT RATING: 0.3A @ 30 VDC



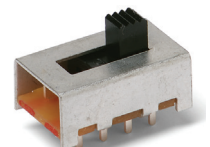
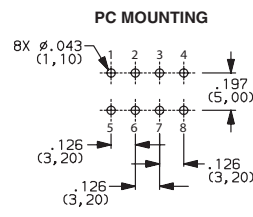
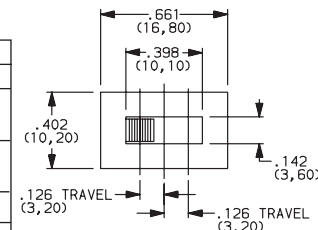
OS202013MT8QN1  
**DPDT**



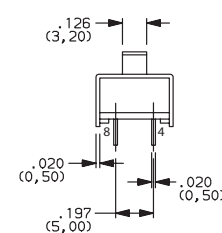
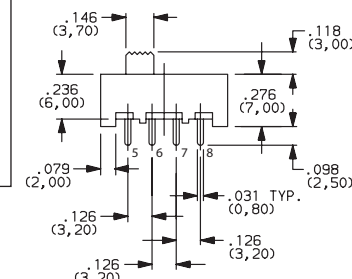
Actuator shown in pos. 1

| PART NUMBER                             | ROHS Compliant | ROHS Compatible | SWITCH FUNCTION |          |          |
|---|----------------|-----------------|-----------------|----------|----------|
|   |                |                 | POS.1           | POS.2    | POS.3    |
| <b>OS203013MT8QN1</b><br>(Non-shorting) | YES            | NO              | ON              | ON       | ON       |
| CONN. TERMINALS                         |                |                 | 1-2, 5-6        | 2-3, 6-7 | 3-4, 7-8 |
| SCHEMATIC                               |                |                 |                 |          |          |
|   |                |                 |                 |          |          |
| <b>DP3T</b>                             |                |                 |                 |          |          |

CONTACT RATING: 0.3A @ 30 VDC



OS203013MT8QN1  
**DP3T**



Actuator shown in pos. 1

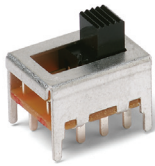


Third Angle Projection  
Dimensions are shown: Inches (mm)  
Specifications and dimensions subject to change

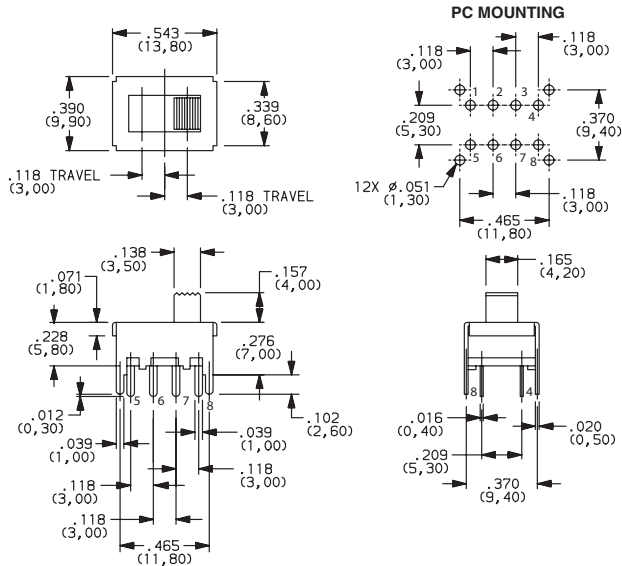


11 Nov 20

# OS Series Miniature Slide Switches



OS203013MT6QN1  
DP3T



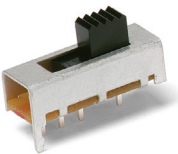
Actuator shown in pos. 3

| PART NUMBER                             | ROHS      |            | SWITCH FUNCTION |          |          |
|---|-----------|------------|-----------------|----------|----------|
|   | Compliant | Compatible | POS.1           | POS.2    | POS.3    |
| <b>OS203013MT6QN1</b><br>(Non-shorting) | YES       | NO         | ON              | ON       | ON       |
| CONN. TERMINALS                         |           |            | 1-2, 5-6        | 2-3, 6-7 | 3-4, 7-8 |
| SCHEMATIC                               |           |            |                 |          |          |
|   |           |            |                 |          |          |
| <b>DP3T</b>                             |           |            |                 |          |          |

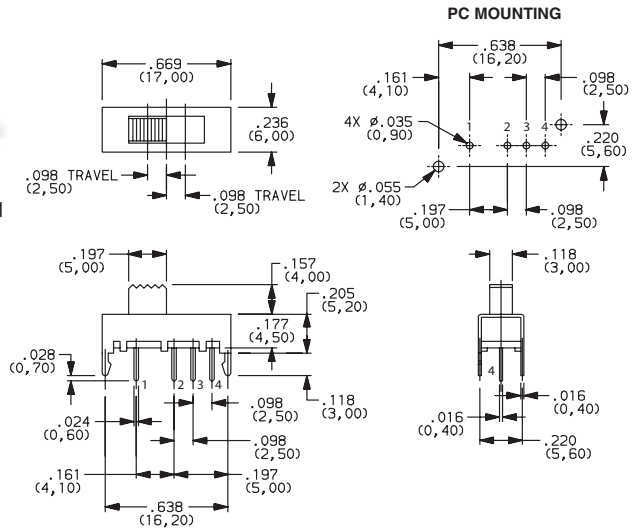
CONTACT RATING: 0.2A @ 30 VDC



Slide



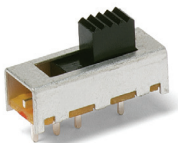
OS103012MU1QP1  
SP3T



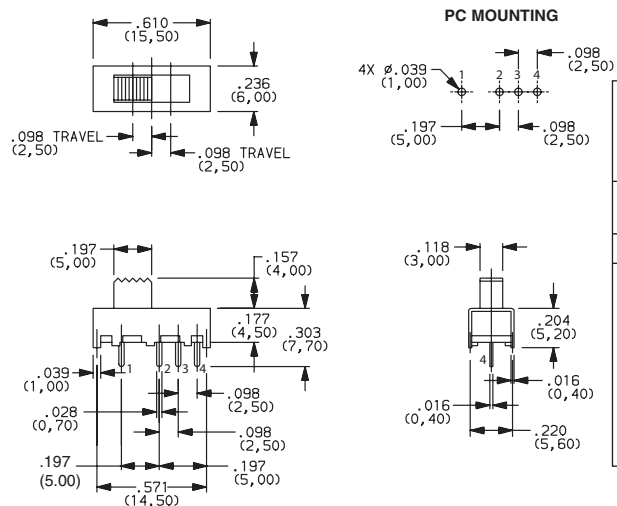
Actuator shown in pos. 1

| PART NUMBER                             | ROHS      |            | SWITCH FUNCTION |       |       |
|---|-----------|------------|-----------------|-------|-------|
|   | Compliant | Compatible | POS.1           | POS.2 | POS.3 |
| <b>OS103012MU1QP1</b><br>(Non-shorting) | YES       | NO         | ON              | ON    | ON    |
| CONN. TERMINALS                         |           |            | 1-2             | 2-3   | 2-4   |
| SCHEMATIC                               |           |            |                 |       |       |
|   |           |            |                 |       |       |
| <b>SP3T</b>                             |           |            |                 |       |       |

CONTACT RATING: 0.2A @ 30 VDC



OS103012MU2QP1  
SP3T



Actuator shown in pos. 1

| PART NUMBER                             | ROHS      |            | SWITCH FUNCTION |       |       |
|---|-----------|------------|-----------------|-------|-------|
|   | Compliant | Compatible | POS.1           | POS.2 | POS.3 |
| <b>OS103012MU2QP1</b><br>(Non-shorting) | YES       | NO         | ON              | ON    | ON    |
| CONN. TERMINALS                         |           |            | 1-2             | 2-3   | 2-4   |
| SCHEMATIC                               |           |            |                 |       |       |
|   |           |            |                 |       |       |
| <b>SP3T</b>                             |           |            |                 |       |       |

CONTACT RATING: 0.2A @ 30 VDC



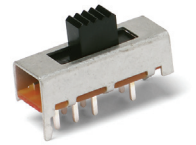
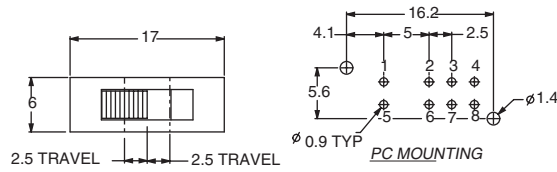
Third Angle Projection

Dimensions are shown: Inch (mm)  
Specifications and dimensions subject to change

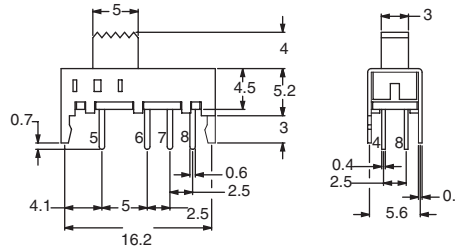
# OS Series Miniature Slide Switches

| PART NUMBER                              | ROHS      |            | SWITCH FUNCTION |          |          |
|--|-----------|------------|-----------------|----------|----------|
|  | Compliant | Compatible | POS.1           | POS.2    | POS.3    |
| <b>OS203012MU5QP1</b><br>(Non-specified) | YES       | NO         |                 |          |          |
| CONN. TERMINALS                          |           |            | 1-2, 5-6        | 2-3, 6-7 | 2-4, 6-8 |
| SCHEMATIC                                |           |            |                 |          |          |
|  |           |            |                 |          |          |
| <b>DP3T</b>                              |           |            |                 |          |          |

CONTACT RATING: 0.1A @ 30 VDC



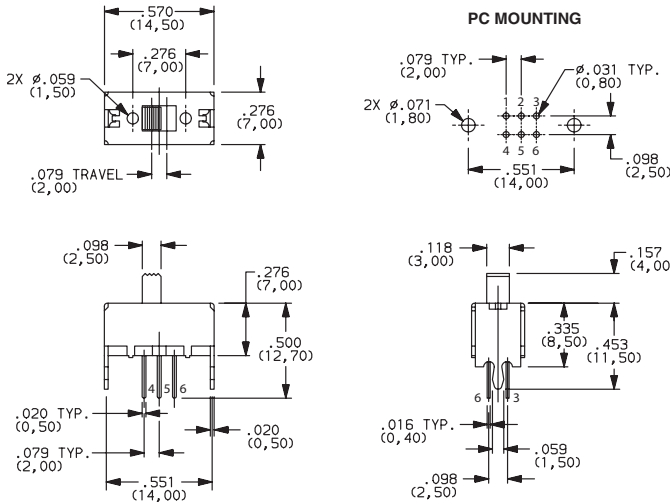
OS203012MU5QP1  
**DP3T**



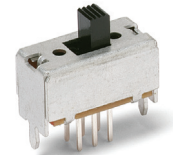
ACTUATOR SHOWN IN POS. 1

| PART NUMBER                             | ROHS      |            | SWITCH FUNCTION |          |
|---|-----------|------------|-----------------|----------|
|   | Compliant | Compatible | POS.1           | POS.2    |
| <b>OS202011MV4QN1</b><br>(Non-shorting) | YES       | NO         |                 |          |
| <b>OS202011MV4QS1</b><br>(Shorting)     | YES       | NO         |                 |          |
| CONN. TERMINALS                         |           |            | 1-2, 4-5        | 2-3, 5-6 |
| SCHEMATIC                               |           |            |                 |          |
|   |           |            |                 |          |
| <b>DPDT</b>                             |           |            |                 |          |

CONTACT RATING: 0.1A @ 30 VDC



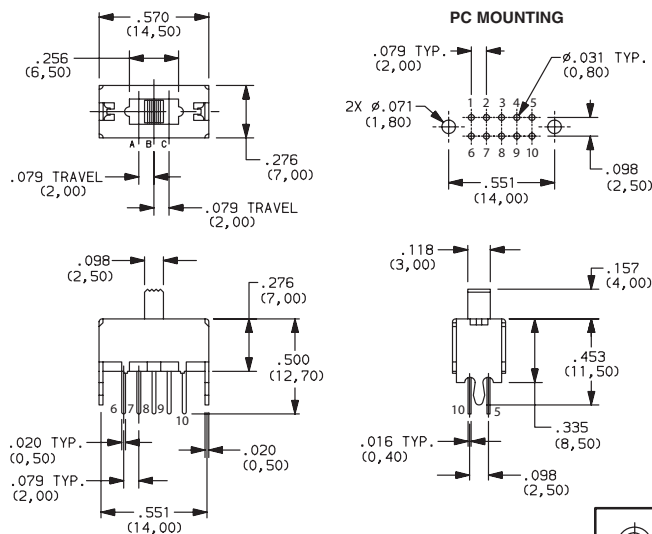
Actuator shown in pos. 1



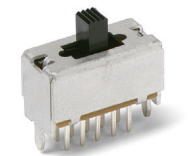
OS202011MV4QN1  
**DPDT**

| PART NUMBER                             | ROHS      |            | SWITCH FUNCTION |                 |                 |
|---|-----------|------------|-----------------|-----------------|-----------------|
|   | Compliant | Compatible | POS.1           | POS.2           | POS.3           |
| <b>OS203011MV9QS1</b><br>(Shorting)     | YES       | NO         |                 |                 |                 |
| <b>OS203011MV9QN1</b><br>(Non-Shorting) | YES       | NO         |                 |                 |                 |
| CONN. TERMINALS                         |           |            | 1-2-5<br>6-7-10 | 1-3-5<br>6-8-10 | 1-4-5<br>6-9-10 |
| SCHEMATIC                               |           |            |                 |                 |                 |
|   |           |            |                 |                 |                 |
| <b>DP3T</b>                             |           |            |                 |                 |                 |

CONTACT RATING: 0.1A @ 30 VDC



Actuator shown in pos. 2(A)



OS203011MV9QS1  
**DP3T**



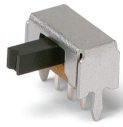
Third Angle Projection

Dimensions are shown: Inches (mm)  
Specifications and dimensions subject to change



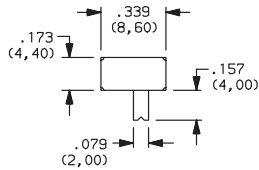
11 Nov 20

# OS Series Miniature Slide Switches

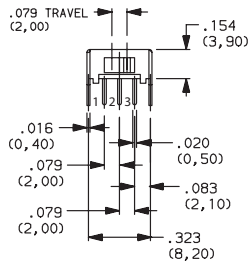
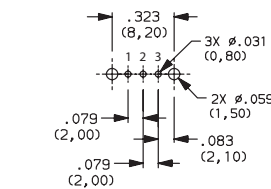


OS102011MA1QN1

SPDT



PC MOUNTING



Actuator shown in pos. 2

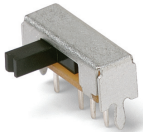
| PART NUMBER                               | RoHS Compliant | RoHS Compatible | SWITCH FUNCTION |       |
|---|----------------|-----------------|-----------------|-------|
|   |                |                 | POS.1           | POS.2 |
| <b>OS102011MA1QN1</b><br>(Non-shorting)   | YES            | NO              | ON              | ON    |
| <b>OS102011MA1QN1C*</b><br>(Non-shorting) | YES            | YES             | ON              | ON    |
| <b>OS102011MA1QS1</b><br>(Shorting)       | YES            | NO              | ON              | ON    |
| <b>OS102011MA1QS1C*</b><br>(Shorting)     | YES            | YES             | ON              | ON    |
| CONN. TERMINALS                           |                |                 | 1-2             | 2-3   |
| SCHEMATIC                                 |                |                 |                 |       |
|   |                |                 |                 |       |
| <b>SPDT</b>                               |                |                 |                 |       |

CONTACT RATING: 0.1A @ 12 VDC

\* "C" option at the end of part number designates high temperature actuators

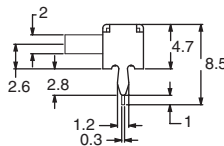
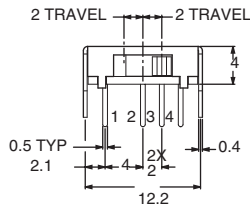
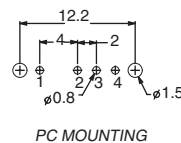
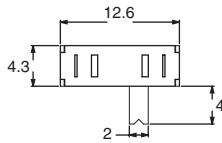


Slide



OS103011MA7QP1

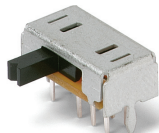
SP3T



| PART NUMBER                                | ROHS Compliant | ROHS Compatible | SWITCH FUNCTION |       |       |
|--|----------------|-----------------|-----------------|-------|-------|
|  |                |                 | POS.1           | POS.2 | POS.3 |
| <b>OS103011MA7QP1</b><br>(Non-specified)   | YES            | NO              | ON              | ON    | ON    |
| <b>OS103011MA7QP1C*</b><br>(Non-specified) | YES            | YES             | ON              | ON    | ON    |
| CONN. TERMINALS                            |                |                 | 1-2             | 2-3   | 2-4   |
| SCHEMATIC                                  |                |                 |                 |       |       |
|  |                |                 |                 |       |       |
| <b>SP3T</b>                                |                |                 |                 |       |       |

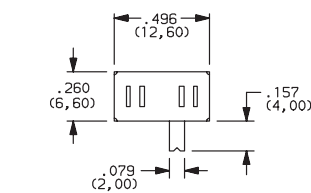
CONTACT RATING: 0.1A @ 12 VDC

\* "C" option at the end of part number designates high temperature actuators

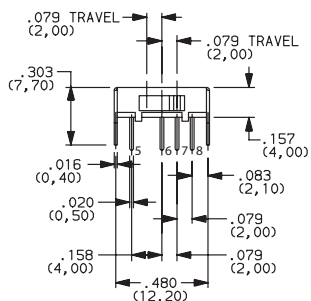
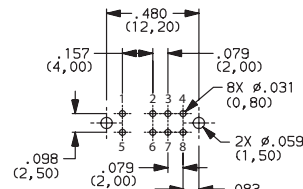


OS203011MA2QP1

DP3T



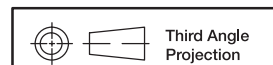
PC MOUNTING



Actuator shown in pos. 3

| PART NUMBER                              | RoHS Compliant | RoHS Compatible | SWITCH FUNCTION |          |          |
|--|----------------|-----------------|-----------------|----------|----------|
|  |                |                 | POS.1           | POS.2    | POS.3    |
| <b>OS203011MA2QP1</b><br>(Non-specified) | YES            | NO              | ON              | ON       | ON       |
| CONN. TERMINALS                          |                |                 | 1-2, 5-6        | 2-3, 6-7 | 2-4, 6-8 |
| SCHEMATIC                                |                |                 |                 |          |          |
|  |                |                 |                 |          |          |
| <b>DP3T</b>                              |                |                 |                 |          |          |

CONTACT RATING: 0.1A @ 12 VDC



Dimensions are shown: Inch (mm)

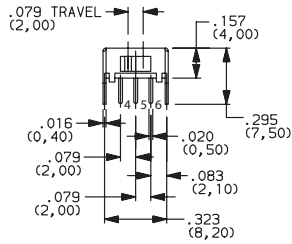
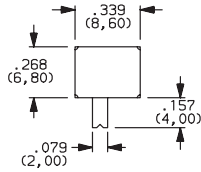
Specifications and dimensions subject to change



# OS Series Miniature Slide Switches

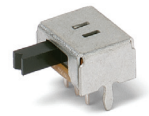
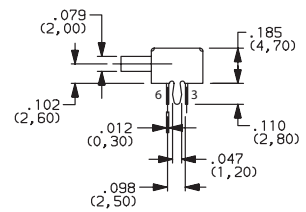
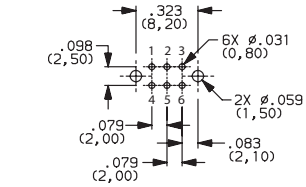
| PART NUMBER                             | RoHS<br>Compliant | RoHS<br>Compatible | SWITCH FUNCTION |          |
|---|-------------------|--------------------|-----------------|----------|
|   |                   |                    | POS.1           | POS.2    |
| <b>OS202011MA0QN1</b><br>(Non-shorting) | YES               | NO                 | ON              | ON       |
| <b>OS202011MA0QS1</b><br>(Shorting)     | YES               | NO                 | ON              | ON       |
| CONN. TERMINALS                         |                   |                    | 1-2, 4-5        | 2-3, 5-6 |
| SCHEMATIC                               |                   |                    |                 |          |
|   |                   |                    |                 |          |
| <b>DPDT</b>                             |                   |                    |                 |          |

CONTACT RATING: 0.1A @ 12 VDC



Actuator shown in pos. 1

## PC MOUNTING



OS202011MA0QN1  
DPDT



Slide



## X-ON Electronics

Largest Supplier of Electrical and Electronic Components

*Click to view similar products for [Slide Switches](#) category:*

*Click to view products by [C&K](#) manufacturer:*

Other Similar products are found below :

[6-1437581-1](#) [M43R](#) [MHS123K15D](#) [MHS133K](#) [MHSS1104A](#) [MMD](#) [GH49S010001](#) [MSS12A](#) [EPS1PC1](#) [1825074-1](#) [1825160-3](#) [1825167-2](#)  
[1825289-7](#) [K232CB](#) [25139NLDB](#) [25449NAH](#) [SLB1240R45](#) [1825078-1](#) [1825080-4](#) [1825269-1](#) [1825270-2](#) [STS141RA04](#) [T2215BEN506](#)  
[GH46P000001](#) [GH46W000001](#) [GH49P010001](#) [25339NA](#) [M42A](#) [TG36P000000](#) [TG36P000050](#) [AYZ0202AG](#) [47227LFE](#) [49331L](#) [50208L](#)  
[L203091MS02Q](#) [4-1437581-7](#) [X2225CR-437W](#) [49329L](#) [1101M1S3ZB8E2](#) [1-1437581-1](#) [MSS2225G04](#) [TG39W000000](#) [1825075-1](#)  
[MSS42G](#) [TG36WS80065](#) [T105S1CWZBE](#) [SLB124145](#) [SLB1280R5](#) [SLB1340R45](#) [25136NLDB](#)