



PWR SERIES POWER PUSHBUTTON

Features / Benefits

- Tactile feel with quiet detent
- High-power, redundant (double break) contacts
- SMD package eliminates secondary processing
- Patent pending
- Momentary, SPST function
- IP65 sealing
- RoHS compliant

Typical Applications

- White goods and appliance main power switch
- Computer and peripherals power ON
- Multiple automotive power functions
- Industrial panel applications

Key Specifications

MECHANICAL

Operating Force:	7N
Pre-travel to 'ON':	1.0mm
Total Travel:	1.6mm
Operating Life –	
Mechanical:	100,000 cycles
Electrical:	1A/250 VAC; 2A/125 VAC 25k; 5A/12VDC 100k

ELECTRICAL

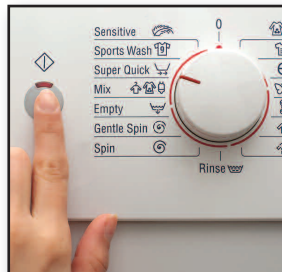
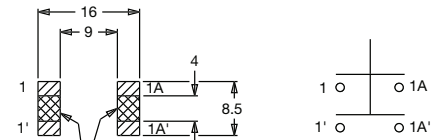
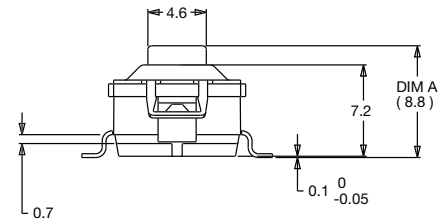
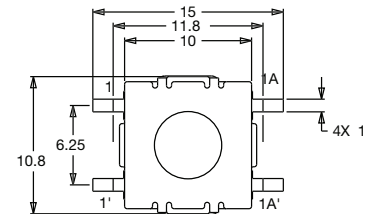
Min/Max Voltage:	100-250 VAC; 5-30 VDC
Min/Max Current:	10mA – 2A AC, (5A DC)
Contact Resistance:	100mΩ max. initial
Dielectric Strength:	1500 VRMS min.
Insulation Resistance:	100 MΩ min.
Operating Temperature:	-20C to 85C
Packaging:	Tape & Reel

OTHER NOTES

RoHS:	Compliant and Compatible
REACH:	Compliant
UL Recognition (AC):	61058

NOTE: Specifications and materials listed above are for switches with standard options. For information on specific and custom switches, please contact Customer Service.

Dimensions



X-ON Electronics

Largest Supplier of Electrical and Electronic Components

Click to view similar products for [Pushbutton Switches](#) category:

Click to view products by [C&K](#) manufacturer:

Other Similar products are found below :

[LW1L-M1C10V-A](#) [LW2L-A1C20M-GD](#) [LW2L-M1C20M-A](#) [60324L](#) [M7E-HRN2](#) [67021K512](#) [67081K512X](#) [701PB580](#) [719-5504-000](#)
[MDPSSGLFS](#) [810KSV30B](#) [FLT 2U EE 01A](#) [MML21KA3ABK](#) [MML23KA3AC05K-001](#) [MML23KW3AA01W](#) [8418K2](#) [8646AB6X718UL](#)
[8646ABUL](#) [FSDWH](#) [9001KXRK](#) [9001T8BK](#) [9533CD4+U574+U4922](#) [1203MRA](#) [A22EM01S](#) [A595](#) [12037A2ULCSA](#) [1203A2UL](#)
[ABD122N-B](#) [1211390004](#) [ABN111-Y](#) [ABN400-R](#) [1211500044](#) [1211580012](#) [1212MRA](#) [1232A6NF](#) [1241.1183.7047](#) [1241.2511](#) [1241.3428](#)
[1223A2ULCSA](#) [1223MRA](#) [1232AX2119](#) [1241.1183.8000](#) [1241.1183.8029](#) [1241.2506](#) [1241.2606](#) [12MA6](#) [1301940184](#)
[RELBARF6X10\(PLASTIC\)](#) [13435AG](#) [13440AD2G25X822+U4546](#)