

# RTF Series 7.2mm x 7.2mm Low Profile Rotary DIP Switches



H

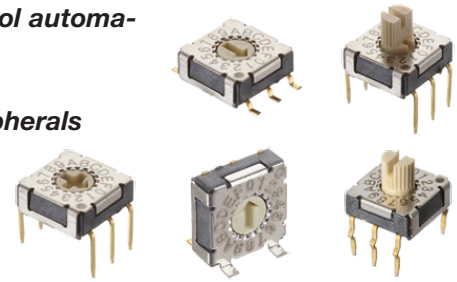
DIP

## Features/Benefits

- New generation
- Most compact rotary DIP switch
- Thru-hole, Crimped, J-Bend, Angled and Surface Mount Models
- New designs with different actuators
- IP67
- RoHS compatible and compliant

## Typical Applications

- Industrial and control automation
- Automotive
- Computer and peripherals
- Instrumentation
- Security devices



## Specifications

CONTACT RATING: 100mA, DC 5V (switching)  
100mA, DC 50V (non-switching)

MECHANICAL & ELECTRICAL LIFE: 10,000 cycles  
INITIAL CONTACT RESISTANCE: 100 milliohms max.  
INSULATION RESISTANCE: 100 megohms min.  
OPERATING TEMPERATURE: -40°C to 85°C.  
STORAGE TEMPERATURE: -40°C to 85°C.  
OPERATING FORCE: 200 gf max.

### SOLDER CONDITIONS:

- Iron soldering: C/K/S/A/J termination: 3s/350°C
- Wave soldering: C/K/A termination: 5s/280°C
- Reflow soldering: S/J termination: 10s/260°C

SOLDERABILITY: Dip and look solderability testing per C&K spec #448

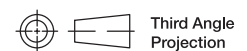
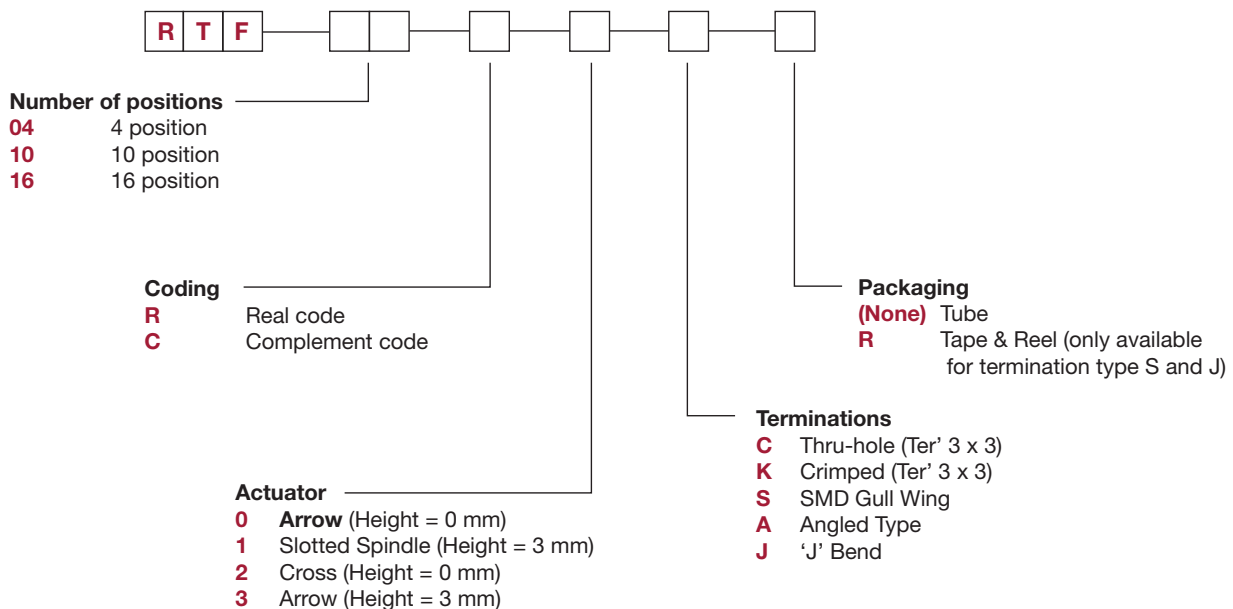
PACKAGING: Switches are supplied in rigid dispensing tubes in full-tube quantities only, this may affect order quantities. Number of switches per tube varies with model. Tape and reel packing is only available with "S" and "J" type terminations.

## Materials

COVER: Stainless steel  
BASE: LCP  
ACTUATOR: LCP  
CONTACTS: Phosphor bronze, gold plated  
SPRING & GUIDE PLATE: Stainless steel  
TERMINALS: Brass, gold plated  
O-RING: Silicon

## How To Order

The Build-A Switch concept allows you to mix and match options to create the switch you need. Below is a complete listing of options shown in catalog. To order, simply select desired option from each category and place in the appropriate box.



Third Angle  
Projection

# RTF Series

## 7.2mm x 7.2mm Low Profile Rotary DIP Switches

### CODING

#### R Real Code

04 POSITION

		Real Code				
		C	1	2	4	8
04 POSITION	0	●				
	1	●	●			
	2	●	●	●		
	3	●	●	●	●	

10 POSITION

		Real Code				
		C	1	2	4	8
10 POSITION	0	●				
	1	●	●			
	2	●	●	●		
	3	●	●	●	●	
	4	●	●	●	●	●
	5	●	●	●	●	●
	6	●	●	●	●	●
	7	●	●	●	●	●
	8	●	●	●	●	●
	9	●	●	●	●	●

16 POSITION

		Real Code				
		C	1	2	4	8
16 POSITION	0	●				
	1	●	●			
	2	●	●	●		
	3	●	●	●	●	
	4	●	●	●	●	●
	5	●	●	●	●	●
	6	●	●	●	●	●
	7	●	●	●	●	●
	8	●	●	●	●	●
	9	●	●	●	●	●
	A	●	●	●	●	●
	B	●	●	●	●	●
	C	●	●	●	●	●
	D	●	●	●	●	●
	E	●	●	●	●	●
	F	●	●	●	●	●

#### C Complement Code

04 POSITION

		Complement Code				
		C	1	2	4	8
04 POSITION	0		●	●	●	●
	1			●	●	●
	2				●	●
	3					●

10 POSITION

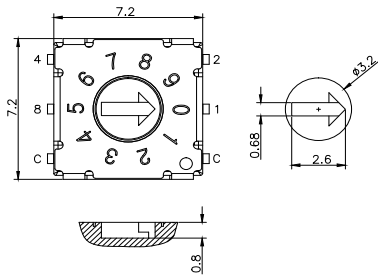
		Complement Code				
		C	1	2	4	8
10 POSITION	0		●	●	●	●
	1			●	●	●
	2				●	●
	3					●
	4					
	5					
	6					
	7					
	8					
	9					

16 POSITION

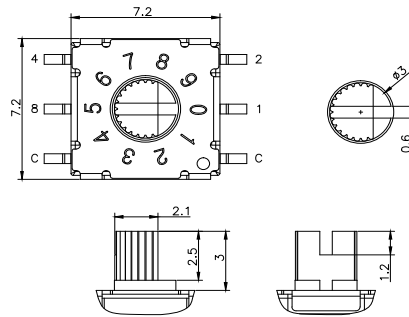
		Complement Code				
		C	1	2	4	8
16 POSITION	0		●	●	●	●
	1			●	●	●
	2				●	●
	3					●
	4					
	5					
	6					
	7					
	8					
	9					
	A					
	B					
	C					
	D					
	E					
	F					

### ACTUATOR

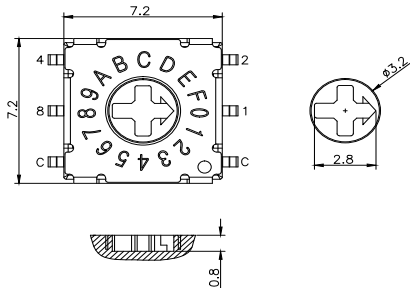
#### 0 Arrow (Height = 0 mm)



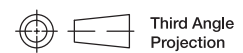
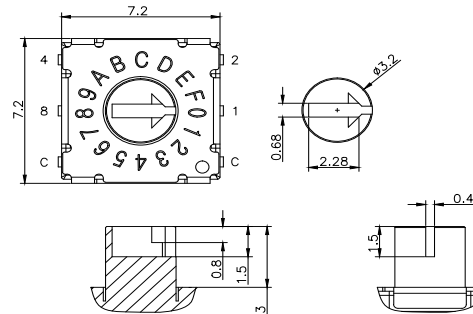
#### 1 Slotted Spindle (Height = 3 mm)



#### 2 Cross (Height = 0 mm)



#### 3 Arrow (Height = 3 mm)

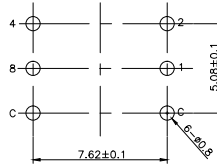
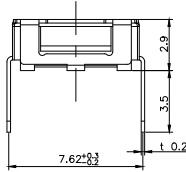
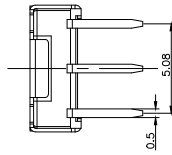
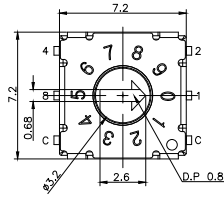


Dimensions are shown: Inch (mm)  
Specifications and dimensions subject to change

# RTF Series 7.2mm x 7.2mm Low Profile Rotary DIP Switches

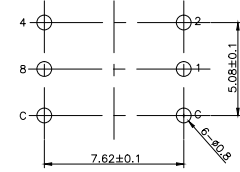
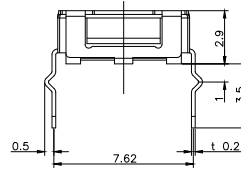
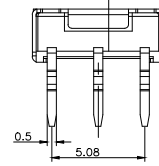
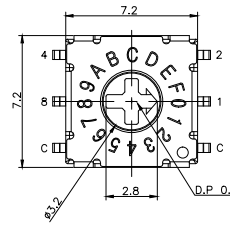
## TERMINATIONS

### C Thru-hole



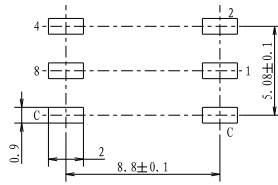
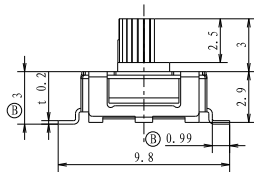
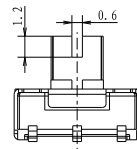
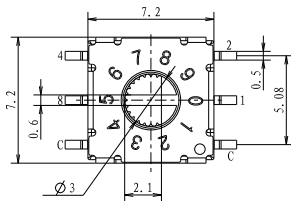
P.C.B DIMENSION

### K Crimped (Ter' 3 x 3)



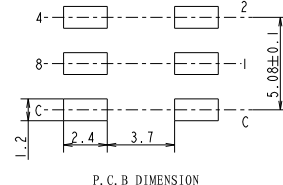
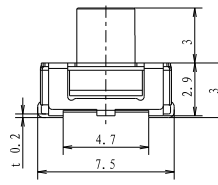
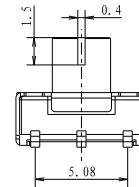
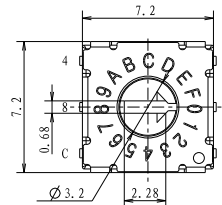
P.C.B DIMENSION

### S SMD Gull Wing



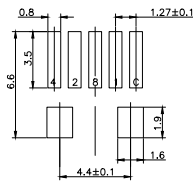
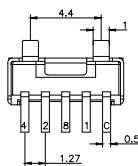
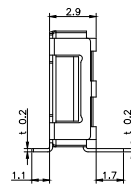
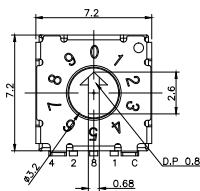
P. C. B DIMENSION

### J Bend SMD



P. C. B DIMENSION

### A Angled Type



P.C.B DIMENSION



Third Angle  
Projection

Dimensions are shown: Inch (mm)  
Specifications and dimensions subject to change

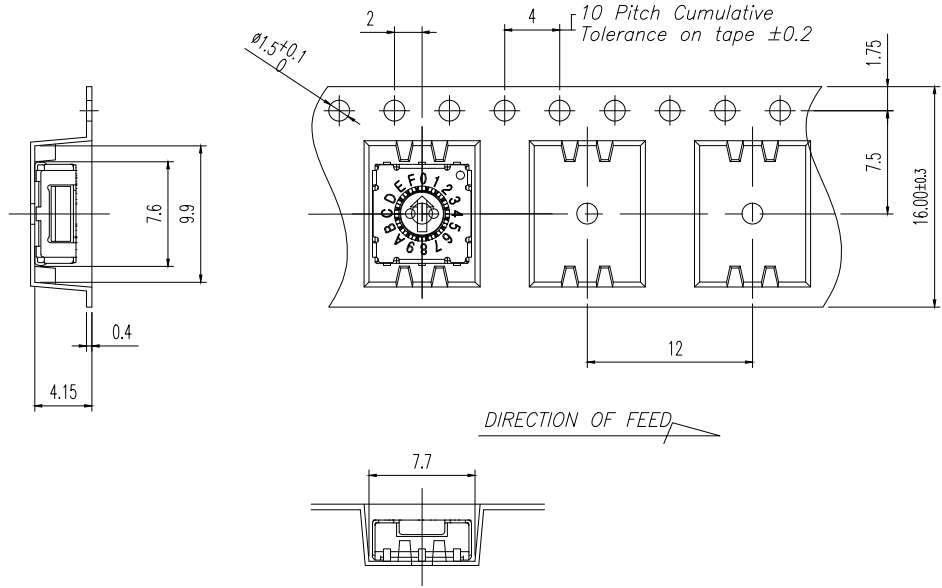
# RTF Series

## 7.2mm x 7.2mm Low Profile Rotary DIP Switches

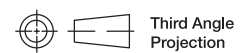
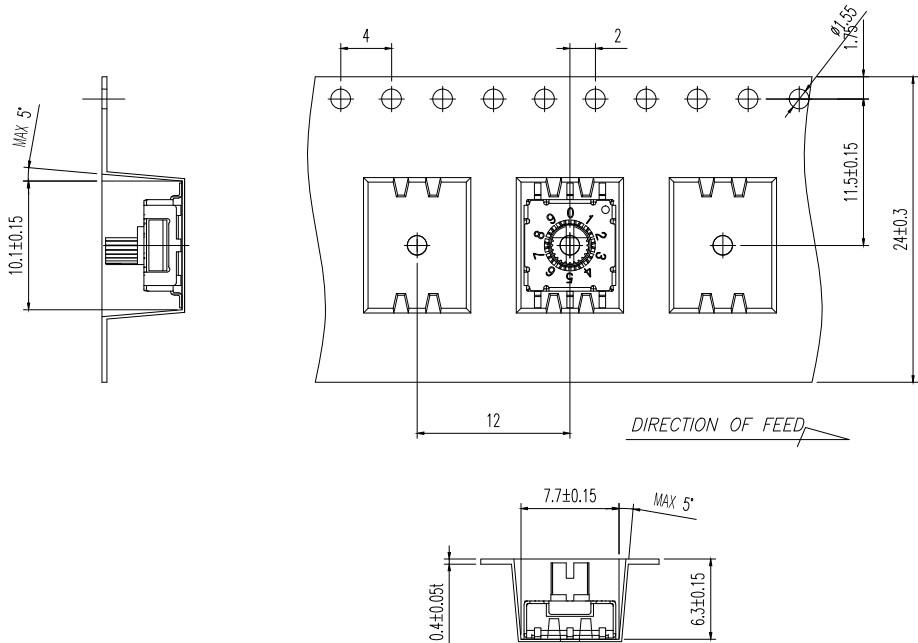
### TAPE & REEL

DIP

The tape and reel is applicable for  
 Actuator 0 or 2 with  
 Termination S or J  
 1300 pcs/reel



The tape and reel is applicable for  
 Actuator 1 or 3 with  
 Termination S or J  
 800 pcs/reel



Dimensions are shown: Inch (mm)  
 Specifications and dimensions subject to change

## X-ON Electronics

Largest Supplier of Electrical and Electronic Components

*Click to view similar products for [Coded Rotary Switches](#) category:*

*Click to view products by [C&K](#) manufacturer:*

Other Similar products are found below :

[94HCB08W](#) [94HCB10WR](#) [PT65503RT](#) [P60AS703](#) [P60A503](#) [P65THR101L254](#) [RTE16 LFTSVTPL 13613](#) [GSDR-10S](#) [CRD10CM0SBR](#)  
[DRS4116](#) [RTE1600R44](#) [ERD110RSZ](#) [ERD116CSZ](#) [ERD116RSZ](#) [ERD716M06Z](#) [94HBB16WT](#) [94HBB10WT](#) [94HAC10T](#) [94HAB16T](#)  
[94HAB10WT](#) [94HAB10RAT](#) [94HAB08WT](#) [ERD216RSZ](#) [ND3FR10P](#) [DRR3110](#) [S-4010TA](#) [94HCB16WT](#) [94HCB16T](#) [94HCB10RAT](#)  
[94HCB08T](#) [94HAB16RAT](#) [94HAB10T](#) [94HAB08T](#) [S-2031A](#) [S-1010A](#) [RTE1000V14](#) [RTBH31BS10ANNZP](#) [PT65501L254](#) [PT65127L254](#)  
[PT65502L508](#) [1-1825007-1](#) [1-1825007-6](#) [ND3FR16B](#) [ND3FR16P-R](#) [SMR14116](#) [RTE0400N04](#) [RTE1000N14](#) [RTE1002G14](#) [RTE1002N14](#)  
[RTE1010N14](#)