

TLS Series Soft Sound Tact Switch

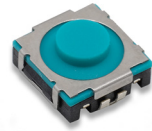
NEW

Features/Benefits

- New soft sound
- Soft actuator
- IP54
- Long life
- J terminations
- Tape & reel

Typical Applications

- Automotive interior controls
- Automatic gear shift paddle
- Steering wheel
- Window lifter
- Seat adjustment module



Tactile Switches

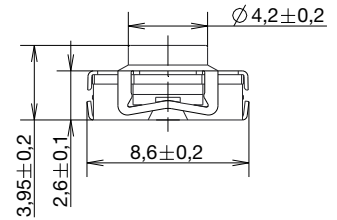
| Type | Force (N) | Tactile Feeling (%) | Travel (mm) | Life (cycles) |
|-------------------|--------------|---------------------|-------------|---------------|
| TLS A 040J LFS | 4 ± 0.8 | 50 ± 15 | 0.9 ± 0.3 | 1,000,000 |
| TLS A 070J LFS | 7 ± 1.5 | | | 500,000 |
| TLS A 100J LFS | 10 ± 2 | | | 300,000 |
| TLS A 040 T3J LFS | 4 ± 0.8 | 30 ± 15 | 0.9 ± 0.3 | 1,000,000 |
| TLS A 070 T3J LFS | 7 ± 1.5 | | | 500,000 |
| TLS A 100 T3J LFS | 10 ± 2 | | | 300,000 |
| TLS B 040J LFS | 4 +1.0/-0.5 | 50 ± 15 | 0.75 ± 0.2 | 1,000,000 |
| TLS B 060J LFS | 6 +1.5/-0.75 | | | 500,000 |

POWER: 10µ VA min. / 0.8 VA max.

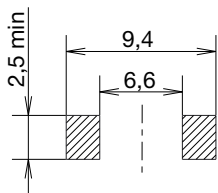
VOLTAGE: DC 1V min. / 16 V max.

CURRENT: 10µA min. / 50 mA max.

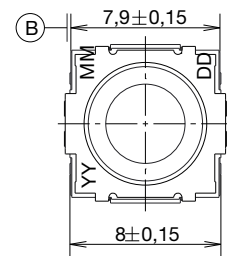
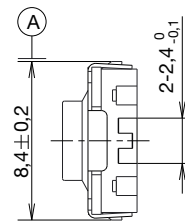
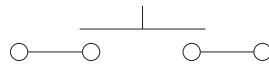
OPERATING TEMPERATURE: -40°C / +90°C



PCB LAYOUT



CIRCUIT DIAGRAM



Packaging

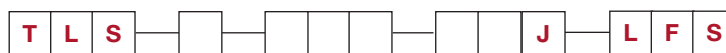
Switches in reels of 900 pieces.

Dimensions of reels according to EIA 481B. External diameter 330 mm.

How To Order

Our easy build-a-switch concept allows you to mix and match options to create the switch you need. To order, select desired option from each category and place it in the appropriate box.

For any part number different from those listed above, please consult your local representative.



Travel
A 0.9 mm
B 0.75 mm

Operating Force
040 4N
060 6N
070 7N
100 10N

Termination
J J bending

Tactile
None 50%
T3 30%

LFS Lead free compatible, silver plated



Dimensions are shown: mm
 Specifications and dimensions subject to change



29 Jun 21

X-ON Electronics

Largest Supplier of Electrical and Electronic Components

Click to view similar products for [Tactile Switches](#) category:

Click to view products by [C&K](#) manufacturer:

Other Similar products are found below :

[6407-250V-25273P](#) [ADTSA62NV](#) [B3F-3123](#) [1977177-8](#) [1977266-1](#) [ADTSA63NV](#) [ADTSM21NSVTR](#) [ADTSM25RVTR](#) [ADTSM32NVTR](#)
[ADTSMW64RV](#) [1977120-6](#) [FSMRA4JHA04](#) [GS4.70F300QP](#) [KSC241J SP DELTA LFS](#) [3FTL600RAS](#) [3FTL640RAS](#) [6407-250V-25343P](#)
[ADTSM31NVTR](#) [2-1977120-7](#) [TSJW-5.2-260-TR](#) [Y651050400P](#) [KMT011MNGJLHS](#) [70-201.0](#) [ADTSG648NV](#) [ADTSM62KSVTR](#)
[ADTSM648NV](#) [95C06E3RAT](#) [3ATH9Q](#) [FSMRA8JHA04](#) [HARS0073](#) [Y33R411N9FPLFT](#) [Y33R51139FPLFT](#) [Y31C01402FPLFS](#)
[PTS645SK50SMTR92](#) [ADTSM32NVB](#) [KMS233GPWTLFG](#) [Y78B64124FP](#) [Y31CJ244KFP LFS](#) [Y96D113G0FP LFS](#) [Y33A812C5FP LFT](#)
[Y56B2D120FP LFS](#) [Y31C5144KFP LFS](#) [PTS645 DVM83-BN125-2 LFS](#) [B3W 1000G](#) [KSC621G OL LFS](#) [B3F 1002C](#) [B3F 0047H](#) [B3W](#)
[1002C](#) [B3F 5001G](#) [B3W 1100C](#)