

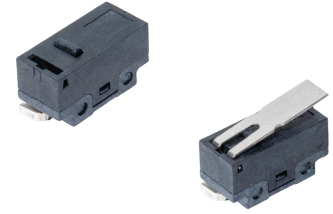
ZPA Series Surface Mount Snap-acting Switches

Features/Benefits

- Reliable snap-acting mechanism
- Long electrical and mechanical life
- Mini packaging size
- Surface mount terminations
- RoHS compatible & compliant

Typical Applications

- PCB detection switch
- Communication devices
- Testing equipment
- Security/Alarm systems
- Consumer electronics



Specifications

CONTACT RATING: 0.1A @ 125 V AC 30 V DC
 ELECTRICAL LIFE: 1,000,000 cycles @ 0.1A
 MECHANICAL LIFE: 1,000,000 cycles
 INSULATION RESISTANCE: 100 M ohm min.
 DIELECTRIC STRENGTH: 500 Vrms
 OPERATING TEMPERATURE: -40°C to +85°C
 OPERATING FORCE: 80 or 150 grams
 PACKAGING: Switches are supplied in rigid dispensing tubes in full-tube quantities only, this may affect order quantities. Tape and reel packing also available.

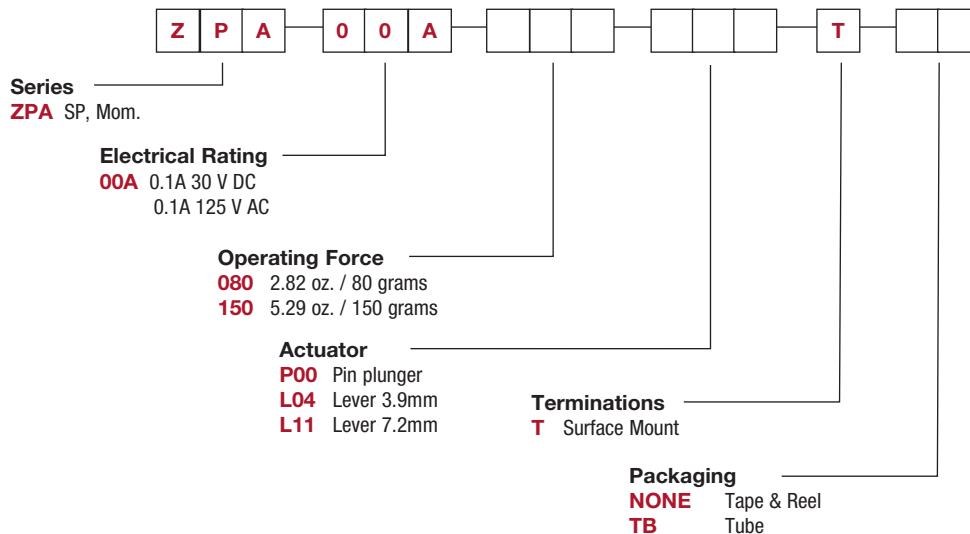
Materials

CASE/COVER: LCP
 ACTUATOR: LCP
 MOVABLE CONTACT: Silver alloy
 STATIONARY CONTACTS: Silver alloy
 TERMINALS: Brass, silver plated.

NOTE: Specifications and materials listed above are for switches with standard options.

Build-A-Switch

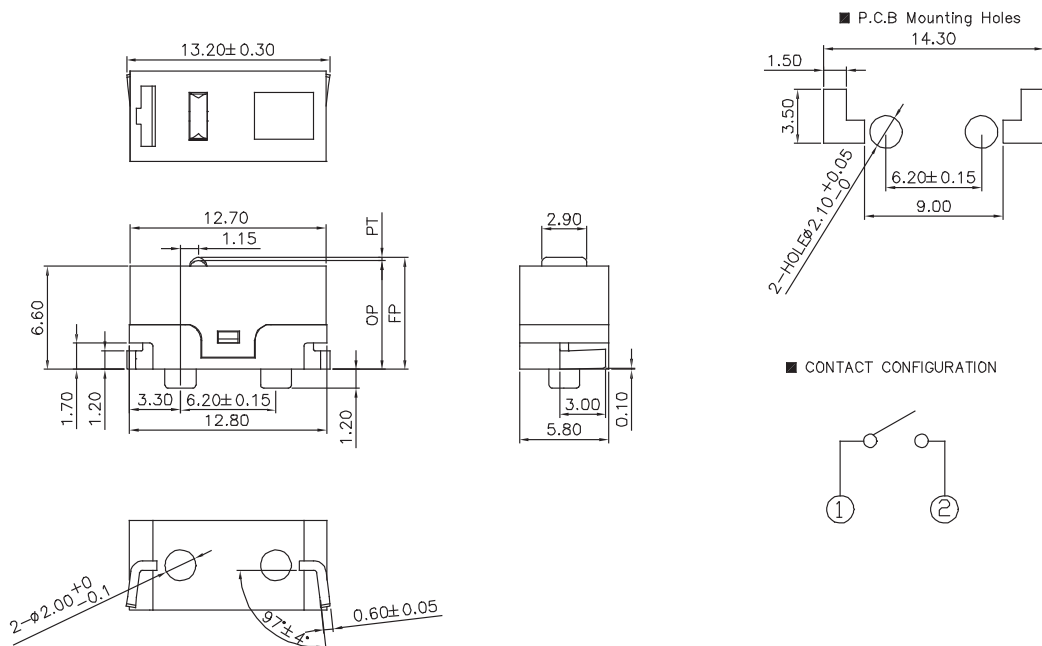
To order, simply select desired option from each category and place in the appropriate box. For additional options not shown in catalog, consult Customer Service Center.



ZPA Series Surface Mount Snap-acting Switches

SERIES

ZPA SURFACE MOUNT SNAP-ACTING SWITCHES – SP MOMENTARY

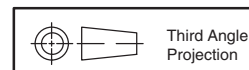


ELECTRICAL RATING

Option Code	Silver Contacts
00A	0.1A 30 V DC 0.1A 125 V AC

OPERATING FORCE

OPTION CODE	BASIC SWITCH OPERATING FORCE (OZ./GRAMS)
080	2.82 80
150	5.29 150

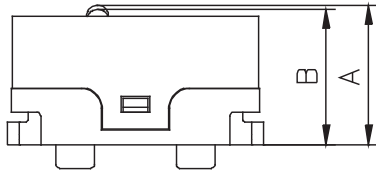


Dimensions are shown: Inches (mm)
Specifications and dimensions subject to change

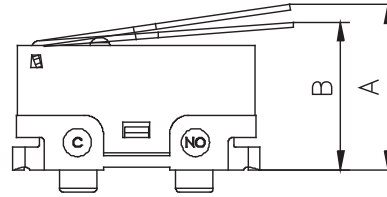
ZPA Series Surface Mount Snap-acting Switches

ACTUATOR

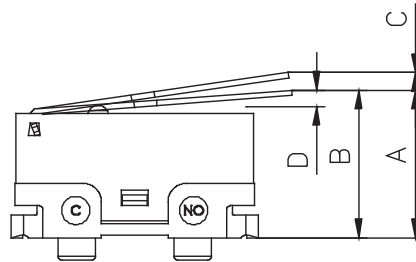
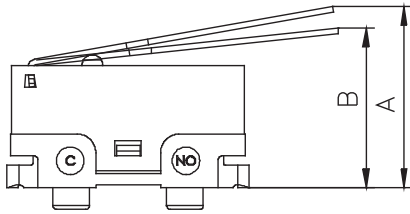
P00 PIN PLUNGER



L04 LEVER
3.9MM



L11 LEVER
7.2MM



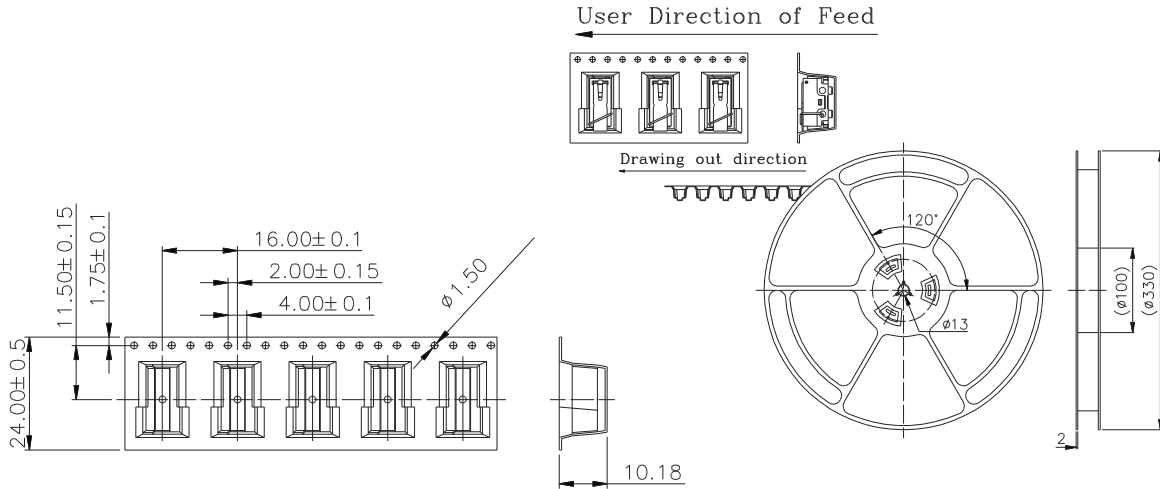
SWITCH CHARACTERISTICS

OPTION CODE	ACTUATOR	OPE. FORCE MAX.	REL. FORCE MIN.	'A' FP MAX	'B' OP MAX	'C' PT MAX	'D' OT MIN	MOVEMENT DIFFERENTIAL
80	P00	Max. 80 gf	Min. 21 gf	Max. 7.35mm	7.0±0.2 mm	Max. 0.62 mm	Min. 0.2 mm	Max. 0.12 mm
	L04	Max. 30 gf	Min. 5 gf	Max. 10.1 mm	7.9±0.8 mm	Max. 3.0 mm	Min. 0.6 mm	Max. 0.8 mm
	L11	Max. 25 gf	Min. 4 gf	Max. 11.7 mm	8.68±1.0 mm	Max. 4.4 mm	Min. 0.6 mm	Max. 0.8 mm
150	P00	Max. 150 gf	Min. 35 gf	Max. 7.35 mm	7.0±0.2 mm	Max. 0.62 mm	Min. 0.2 mm	Max. 0.12 mm
	L04	Max. 50 gf	Min. 8 gf	Max. 10.1 mm	7.9 ± 0.8 mm	Max. 3.0 mm	Min.0.6 mm	Max. 0.8 mm
	L11	Max. 39 gf	Min. 6 gf	Max. 11.7 mm	8.68 ±1.0 mm	Max. 4.4 mm	Min. 0.6 mm	Max. 0.8 mm

Snap-acting

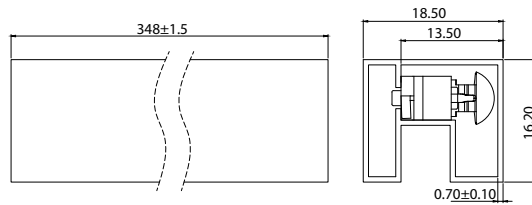
ZPA Series Surface Mount Snap-acting Switches

TAPE AND REEL



Package: 400pcs/ reel

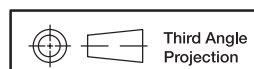
TUBE



Package: 25pcs/ tube



Snap-acting



Third Angle
Projection

Dimensions are shown: Inches (mm)
Specifications and dimensions subject to change

X-ON Electronics

Largest Supplier of Electrical and Electronic Components

Click to view similar products for [Basic / Snap Action Switches](#) category:

Click to view products by [C&K](#) manufacturer:

Other Similar products are found below :

[5SM901-S12](#) [5SM9-S12N195](#) [602EN532](#) [602EN535-RB](#) [602HE5-RB1](#) [604HE162](#) [604HE223-6B](#) [624HE17-RB](#) [6HM82](#) [6HM89](#) [6SE1](#)
[6SX1-H58](#) [70500216](#) [70599106](#) [MBD5B1](#) [MBH2731](#) [73-316-0012](#) [EXD-AR20](#) [79211923](#) [79218589](#) [7AS12](#)
[MIL30126AB6BBMD4A12XAU](#) [ML-1155](#) [ML-1376](#) [831010C3.0](#) [831090C2.EL](#) [83131904](#) [84212012](#) [8AS239](#) [8HM73-3](#) [8SX26-H33](#)
[914CE1-6G](#) [PL-100](#) [11SM1077-H4](#) [11SM1077-H58](#) [11SM1-TN107](#) [11SM405](#) [11SM8423-H2](#) [11SX37-T](#) [11SX48-H58](#) [11SM2442-T](#)
[11SM76-T](#) [11SM77-H58](#) [11SM77-T](#) [11SM863-T](#) [11SM866](#) [A7CN-1M-1-LEFT](#) [A831700C7.0](#) [121EN188-R](#) [1245.0120](#)