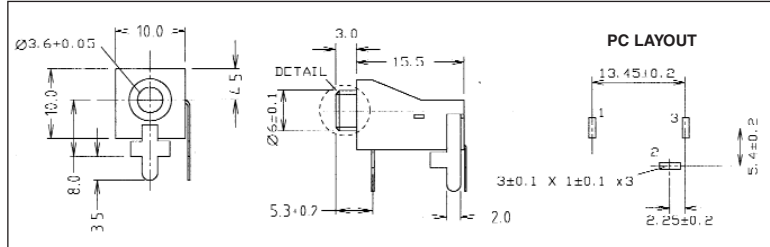




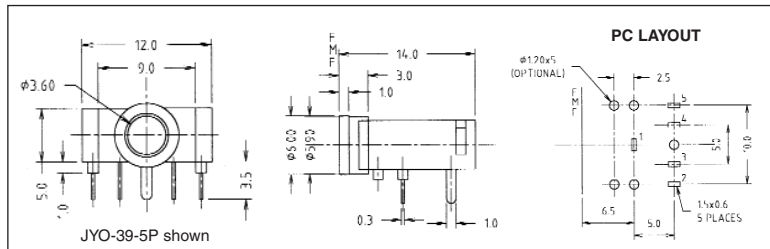
JYO-36A mono switched 3.5mm Jack Socket. Stand-off right angle PCB mounting with threadless nose.

JYO-36A (FC68130)



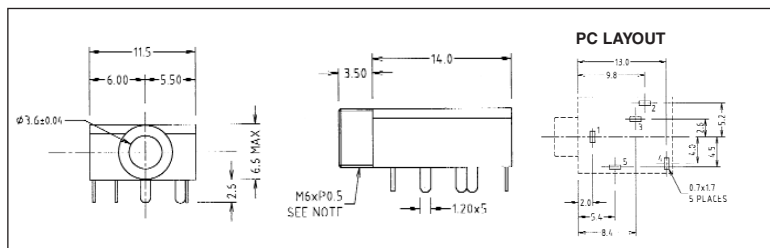
JYO-39-3P stereo unswitched 3.5mm Jack Socket. JYO-39-5P stereo switched version. Right angle PCB mounting.

**JYO-39-3P (FC68131)
JYO-39-5P (FC68133)**



JYS-35 stereo switched 3.5mm Jack Socket. Right angle PCB mounting. Supplied with ring nut.

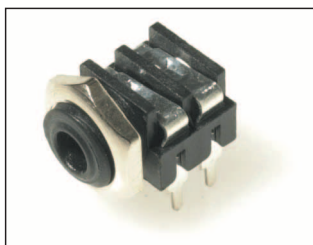
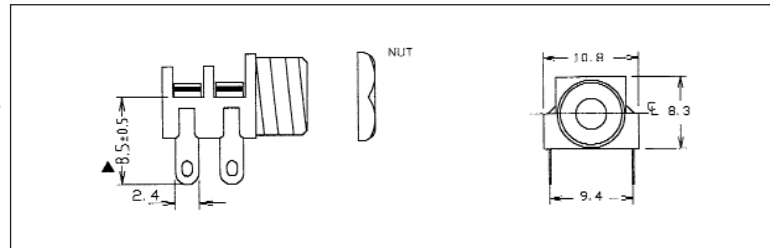
JYS-35 (FT6320)



S6/BB mono switched 3.5mm Jack Socket. Panel mounting with solder tags. Also available with Special 'C' Contact to suit Far Eastern plugs.

S6/BB (CL1382)

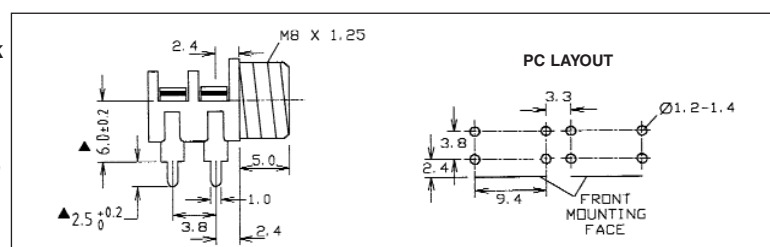
Supplied with Nickel Plated Hex Nut.



S6/BB PC mono switched 3.5mm Jack Socket. Right angle PCB mounting. Also available with Special 'C' Contact to suit Far Eastern plugs.

S6/BB PC (CL1384)

Supplied with Nickel Plated Hex Nut.



Refer to Sales Office for SMD versions.

X-ON Electronics

Largest Supplier of Electrical and Electronic Components

Click to view similar products for [cliff](#) manufacturer:

Other Similar products are found below :

[SRP1 BLACK](#) [CL1423](#) [CL1432](#) [CL159825BA](#) [CL19192RB](#) [CL2160B TP/6 CS](#) [CL-SFE/1 FILTERS](#) [HFRP-01](#) [S2/BBB \(CL1220A\)](#)
[CIH206011](#) [CL14218](#) [CP30117](#) [CP30214M](#) [FM686813](#) [CL11607](#) [CL12345](#) [CL1308G](#) [CL13106G](#) [CP22R](#) [CP30152](#) [CP30211](#) [CP303011X](#)
[CL1406](#) [CL15501A](#) [CL1572](#) [CL681561](#) [CP30173](#) [CP30176](#) [CP30178](#) [CP30179](#) [CP30180](#) [CP30500C](#) [CP30202M3](#) [FCR1295](#) [FCR2065](#)
[FCR7360B](#) [FM686816](#) [CIH29950](#) [CP30225SM](#) [CP30170](#) [CP30174](#) [CIH684216](#) [FW6190](#) [CP30182](#) [CP30184](#) [CP30202M](#) [CIH3021](#)
[CP30208NMB](#) [CP30222SMB](#) [CP30230X](#)