

For applications where Metal Body Connectors are specified, our 'M' Series will meet the most severe specifications. All Electrical Contact parts are silver plated by a process to give low noise levels. No increase in noise level may be expected over 5000 Plug / Un-Plug Operations. Black finish is available subject to viable quantity. Large solder bucket contacts are used to make wiring easy.



**FC6100 3ACF/M**  
3 Pole Female Socket  
We also make plastic PCB versions of 3 pin XLR



**FC6105 3ACM/M**  
3 Pole Male Socket  
We also make plastic PCB versions of 3 pin XLR



**FC6120 4ACF/M**  
4 Pole Female Socket



**FC6125 4ACM/M**  
4 Pole Male Socket



**FC6170 5ACF/M**  
5 Pole Female Socket  
We also make plastic PCB versions of 5 pin XLR



**FC6175 5ACM/M**  
5 Pole Male Socket  
We also make plastic PCB versions of 5 pin XLR



**FC6187 7ACF/M**  
7 Pole Female Socket



**FC6185 7ACM/M**  
7 Pole Male Socket



**FC6140 3APF/M**  
3 Pole Female Plug  
Screw up collet,  
6 element cable clamp



**FC6130 3APM/M**  
3 Pole Male Plug  
Screw up collet,  
6 element cable clamp



**FC6150 4APF/M**  
4 Pole Female Plug  
Screw up collet,  
6 element cable clamp



**FC6155 4APM/M**  
4 Pole Male Plug  
Screw up collet,  
6 element cable clamp



**FC6165 5APF/M**  
5 Pole Female Plug  
Screw up collet,  
6 element cable clamp



**FC6160 5APM/M**  
5 Pole Male Plug  
Screw up collet,  
6 element cable clamp



**FC6182 7APF/M**  
7 Pole Female Plug  
Screw pressure cable  
clamp

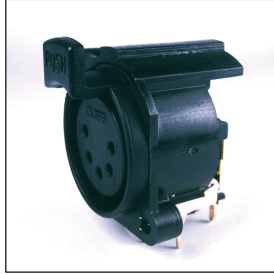


**FC6180 7APM/M**  
7 Pole Male Plug  
Screw pressure cable  
clamp

## 5 PIN XLR



**CP 300255**      **5XNACM/PC90**  
5 PIN MALE XLR 90° PCB MOUNT



**CP 300405**      **5XNACF/PC90/L**  
5 PIN FEMALE XLR 90° PCB MOUNT  
WITH LATCH



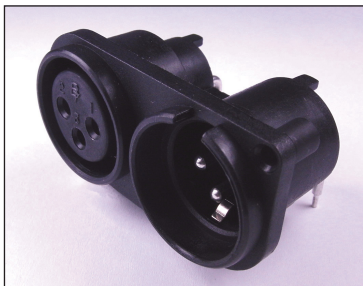
**CP 300404**      **5XNACF/PC90**  
5 PIN MALE XLR 90° PCB MOUNT  
WITHOUT LATCH

---

## DUAL 3 PIN XLR



**FB6928**      **MF/PCSXLR**  
DUAL MALE / FEMALE XLR  
VERTICAL PC MOUNT



**FB6929**      **MF/PC90XLR**  
DUAL MALE / FEMALE XLR  
90° PC MOUNT

---

## XLR PLUGS



**CP3003**      **APF**  
FEMALE XLR PLUG



**CP3004**      **APM**  
MALE XLR PLUG

## **X-ON Electronics**

Largest Supplier of Electrical and Electronic Components

*Click to view similar products for [Cliff manufacturer](#):*

Other Similar products are found below :

[FC681495](#) [DC-10AS \(FC68148S\)](#) [FC7233](#) [CL178887](#) [CL-SFE/1 FILTERS](#) [CIH206011](#) [CL178881](#) [FCR7360L](#) [FM686813](#) [CIH29920](#)  
[CP30152](#) [OTJ-1 \(FCR6842031T\)](#) [OTJ-4 \(FCR684204T\)](#) [CP30173](#) [CP30176](#) [CP30178](#) [CP30179](#) [CP30180](#) [CP30183](#) [CP30186](#) [FCR7360B](#)  
[FM686816](#) [CIH299430](#) [CIH29917](#) [CL159721A](#) [CP30170](#) [CP30174](#) [CIH684216](#) [FM686842](#) [CP30171](#) [CP30182](#) [CP30184](#) [CIH3021](#)  
[CL18875](#) [CL1850](#) [FCR7350Y](#) [FM686806](#) [CIH29950](#) [CIH29916](#) [CP30150](#) [CP30500C](#) [FCR1121](#) [FM12315](#) [CP30181](#) [CP30202M](#)  
[CP30202M3B](#) [CP30230X](#) [S6/BB PC \(CL1384\)](#) [CIH299450](#) [CL2075S](#)