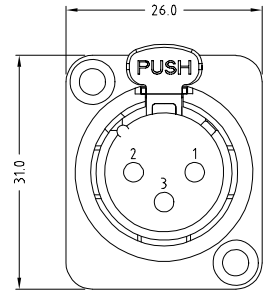
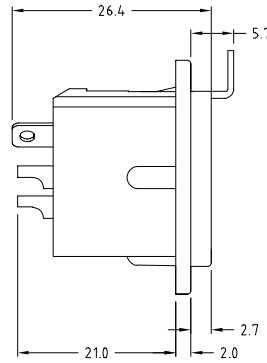
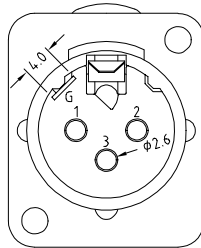
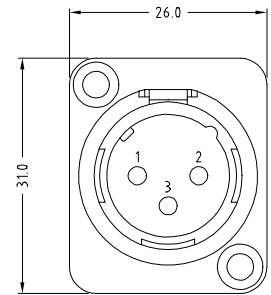
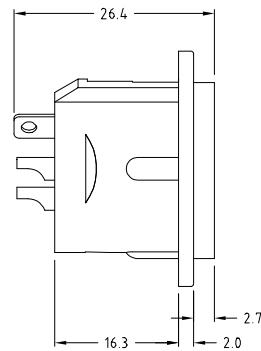
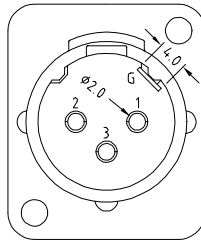


CLIFF

METAL 3 PIN XLR SOCKETS (FEEDTHROUGH STYLE)



FC61900 - FEMALE XLR 3DCF/BM BLACK WITH LATCH
FC61900N - FEMALE XLR 3DCF/NM NICKEL WITH LATCH

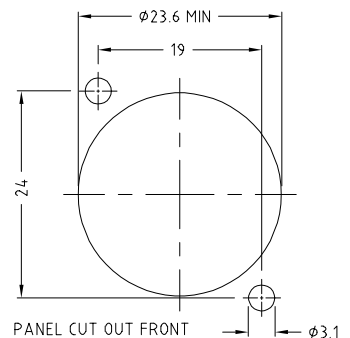


FC61905 - MALE XLR 3DCM/BM BLACK
FC61905N - MALE XLR 3DCM/NM NICKEL

SPECIFICATION

Contact Resistance: $\leq 7m\Omega$
Insulation Resistance: $\geq 5000M\Omega$
Withstand Voltage: 1400V
Durability (Mating / Unmating): ≥ 2000 insertions
Insertion and Extraction force: 10-80N

These metal 3 pin XLR's can be fitted into our 1U racks.



X-ON Electronics

Largest Supplier of Electrical and Electronic Components

Click to view similar products for [XLR Connectors](#) category:

Click to view products by [Cliff](#) manufacturer:

Other Similar products are found below :

[HA16PRQ-3SE\(71\)](#) [AAA4FWZ](#) [AAA4MWZ](#) [AC5FPZB](#) [DE4MW](#) [E3MBAUSW](#) [99.265.0400.0](#) [AC4-FCP](#) [AQG4F](#) [3FD-V-I-B](#) [3MD-V-I-B](#)
[TA01](#) [TA3MWX](#) [TA5MLWX](#) [TRASM4M1X](#) [3FD-L-I-\(O\)](#) [DHNF-BAG-O](#) [E3FBAUSW](#) [E3FSW](#) [TA4FLWX](#) [TA6FLWX](#) [WP2S4P](#)
[WP1S1](#) [WP1B2](#) [TA5FLWX](#) [NC3FEZY-P](#) [NC3FG-V](#) [NC6FSD-LX](#) [NC6MSD-LX](#) [NCJ6FK-V](#) [NCXX-PROMO](#) [NC3FD-L](#) [NC3FD-L-0-1](#)
[NC3FX-1-D](#) [NC3MX-1-D](#) [NC3MXY-B](#) [NC5FDM3-V-BAG](#) [SL04](#) [AC3-FIC](#) [E3MBSW](#) [AC6AMJ-AU](#) [TRG4MX](#) [352AX](#) [AC5MJ BULK](#)
[HA-3MXX](#) [CP3000](#) [CP3001](#) [CP30241](#) [R6FZ](#) [TA5MWX](#)