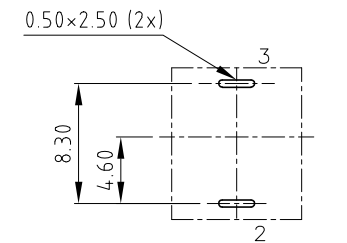
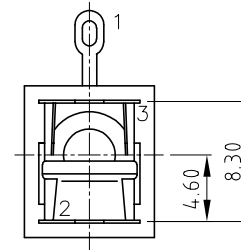
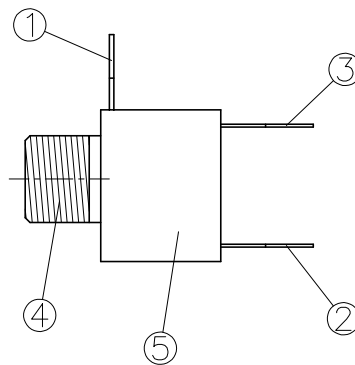
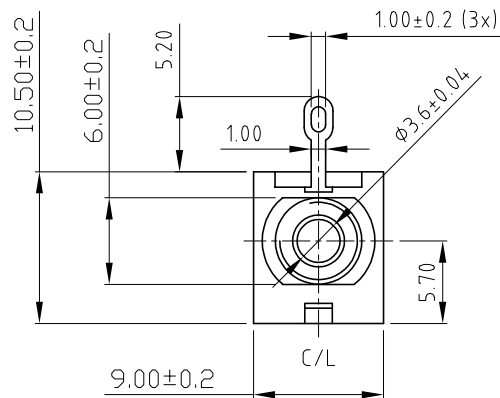
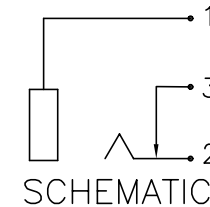
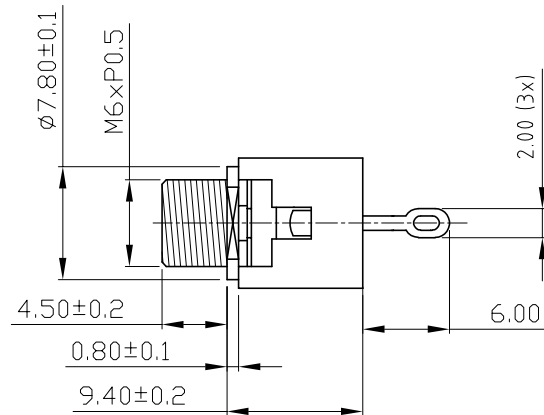
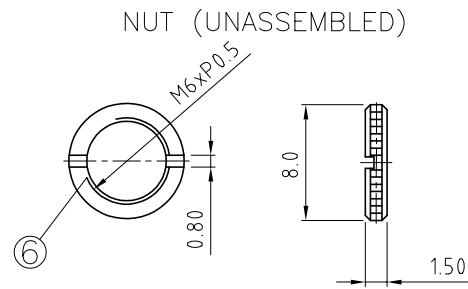


ISS.	AMEND	DATE
1	ISSUED	04/11/20



No.	Description	Material	Qty	Finish
6.	M6 Nut	1.5T Brass	1	Gold Plated
5.	Housing	POM	1	Ivory Colour
4.	Barrel(W/Thread)	Brass	1	Gold Plated
3.	Ring Spring	0.2T Phosphor Bronze	1	Gold Plated
2.	Tip Spring	0.2T Phosphor Bronze	1	Gold Plated
1.	Earth Terminal	0.3T Brass	1	Gold Plated

**SPECIFICATIONS**

Contact Resistance : 30mΩ max  
 Insulation Resistance : 100MΩ min. at DC 500V  
 Dielectric Withstanding Voltage: AC 500V for one minute

TOLERANCE : ±0.3mm UNLESS OTHERWISE SPECIFIED



**TOLERANCE**  
 NO DEC. PLACE ±  
 1 DEC. PLACE ±  
 2 DEC. PLACE ±  
 HOLE Ø ±  
 ANGLES ±  
 UNLESS OTHERWISE STATED

**Cliff Electronic Components Ltd.**

76 Holmehorpe Avenue, Holmehorpe Industrial Estate,  
 Redhill, Surrey, RH1 2PF, England, UK  
 Tel: 01737-771375 Fax: 01737-766012 Website: www.cliffuk.co.uk

THE CONTENTS OF THIS DOCUMENT MUST NOT BE COPIED OR DISCLOSED TO A 3rd PARTY WITHOUT WRITTEN PERMISSION OF CLIFF UK. © 1990

DIMENSIONS IN MILLIMETERS UNLESS OTHERWISE STATED. WORK TO DIMENSIONS. REMOVE ALL BURRS. IF IN DOUBT ASK.

3rd ANGLE PROJECTION:

DO NOT SCALE

MATERIAL: SEE TABLE

TITLE: Ø3.5mm MONO JACK SOCKET GOLD (JYO-35)

FINISH: SEE TABLE

DRWG. No. **FC6812G** FORM: A4DRWGH

DRAWN: T.J.O.

APPROVED: D.P.J.

## **X-ON Electronics**

Largest Supplier of Electrical and Electronic Components

*Click to view similar products for [Cliff](#) manufacturer:*

Other Similar products are found below :

[300PN](#) [5XNACF/PC90L \(CP300405\)](#) [5XNACM/PC90\(CP300255\)](#) [ACF](#) [ACM](#) [APF](#) [APM](#) [BS300LLL](#) [BS3058](#) [C1066D](#) [P6C-D](#) [CIH22105](#)  
[CIH29890](#) [CIH29916](#) [CIH29920](#) [CIH29922](#) [CIH29925](#) [CIH299430](#) [CIH299450](#) [CIH29950](#) [CIH3006](#) [CIH3007](#) [CIH3021](#) [CIH30240B](#)  
[CIH30240G](#) [CIH30240R](#) [CIH30241B](#) [CIH30241G](#) [CIH30241R](#) [CL11061 S1V/SBB](#) [CL1110 S1/BNB](#) [CL1115](#) [CL1115 S1/BBB](#) [CL11607](#)  
[CL12207](#) [CL12321K](#) [CL12327](#) [CL1232A](#) [CL12345](#) [CL1282A](#) [CL1308G](#) [CL13106G](#) [CL13345](#) [CL1362](#) [CL1382](#) [CL1382A](#) [CL1382G](#)  
[CL1382L](#) [CL1382P](#) [CL1382R](#) [CL1382W](#)