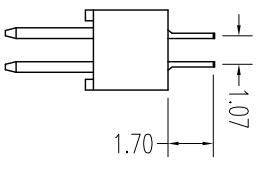
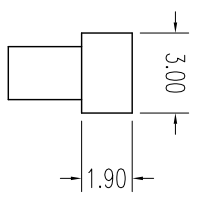
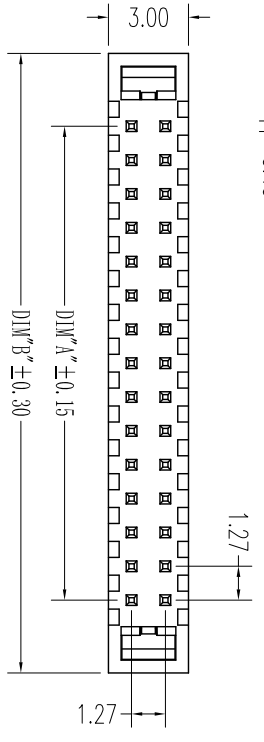
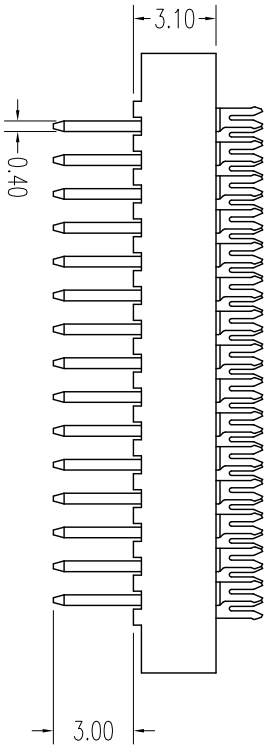
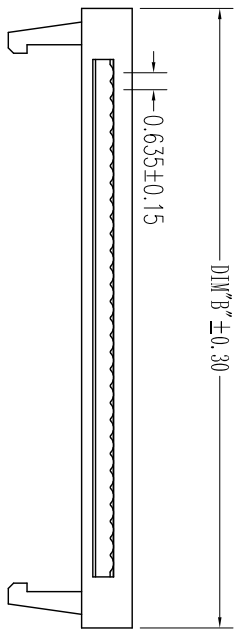
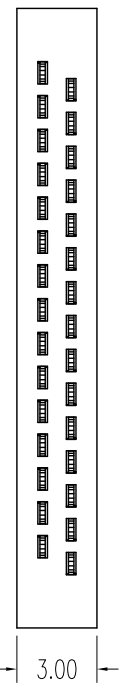
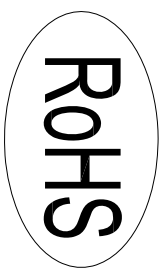
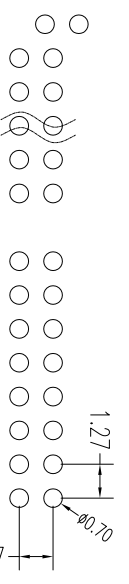


REV.	DESCRIPTION	DATE
A	RELEASE	2012.11.12



NOTES:  
 Insulator Material: PBT, UL 94V-0  
 Contact Plating: Gold flash over nickel  
 Contact Material: Brass  
 Current Rating : 1A AC,DC  
 Contact Resistance: 20MΩ Max.  
 Dielectric Withstanding: AC 500V  
 Insulator Resistance: 1000MΩ Min.  
 Operating Temp.: -40°C~+105°C

NUMBER OF POSITIONS	DIMENSION	
	A	B
06	2.54	8.00
08	3.81	9.27
10	5.08	10.54
12	6.35	11.81
14	7.62	13.08
16	8.89	14.35
20	11.43	16.89
24	13.97	19.43
26	15.24	20.70
30	17.78	23.24
34	20.32	25.78
40	24.13	29.59
44	26.67	32.13
50	30.48	35.94
60	36.83	42.29
64	39.37	44.83



UNLESS TOLERANCE	
GENERAL	ANGLE
X ± 0.30	X° ± 3.0°
.X ± 0.20	.X° ± 2.0°
.XX ± 0.15	.XX° ± 1.0°
.XXX ± 0.10	.XXX° ± 0.5°

DRAW BY	DESIGN BY	CHECK BY	APPROVE BY	SCALE	SHEET	UNIT
				1:1	1/1	MM

**Cnc Tech, LLC**

Port NO.  
3240-XX-00

Draw NO: REV: A

## X-ON Electronics

Largest Supplier of Electrical and Electronic Components

*Click to view similar products for [cnc manufacturer](#):*

Other Similar products are found below :

[741-20010-00500](#) [DL-5468](#) [2725-2828-01000-T](#) [300-30-40-GR-0250F](#) [743-60012-00300](#) [302-28-50-GR-0250F](#) [302-28-10-GR-0100F](#)  
[3020-10-0300-00-TR](#) [FM-213-4](#) [FM-214-4](#) [302-28-26-GR-0250F](#) [302-28-40-GR-0250F](#) [304-28-26-MC-0250F](#) [304-28-40-MC-0250F](#)  
[302-28-09-GR-0250F](#) [1002-003-02000](#) [302-28-37-GR-0250F](#) [302-28-25-GR-0250F](#) [3020-10-0300-00](#) [300-30-14-GR-0250F](#) [302-28-14-GR-](#)  
[0250F](#) [300-30-04-GR-0250F](#) [300-30-26-GR-0250F](#) [304-28-16-MC-0250F](#) [304-28-26-MC-0100F](#) [302-28-10-GR-0250F](#) [800-1401-2-SJT0-](#)  
[BL-00200](#) [300-30-20-GR-0250F](#) [304-28-14-MC-0250F](#) [800-1800-2-SVT0-BL-00100](#) [741-20010-01000](#) [CNC-99-16](#) [302-28-20-GR-0100F](#)  
[302-28-26-GR-0100F](#) [304-28-40-MC-0100F](#) [600218](#) [510-26-6600-WH-0007F](#) [610230](#) [3010-10-003-13-00](#) [304-28-14-MC-0100F](#) [302-28-50-](#)  
[GR-0100F](#) [3030-16-0102-00](#) [3221-10-0300-00](#) [304-28-16-MC-0100F](#) [610234](#) [302-28-37-GR-0100F](#) [800-12-32D-BL-0008F](#) [FM-215-8](#) [DL-](#)  
[1006](#) [304-28-20-MC-0250F](#)