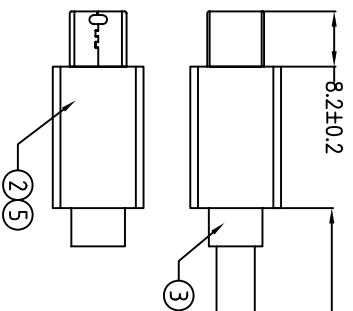
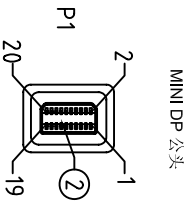
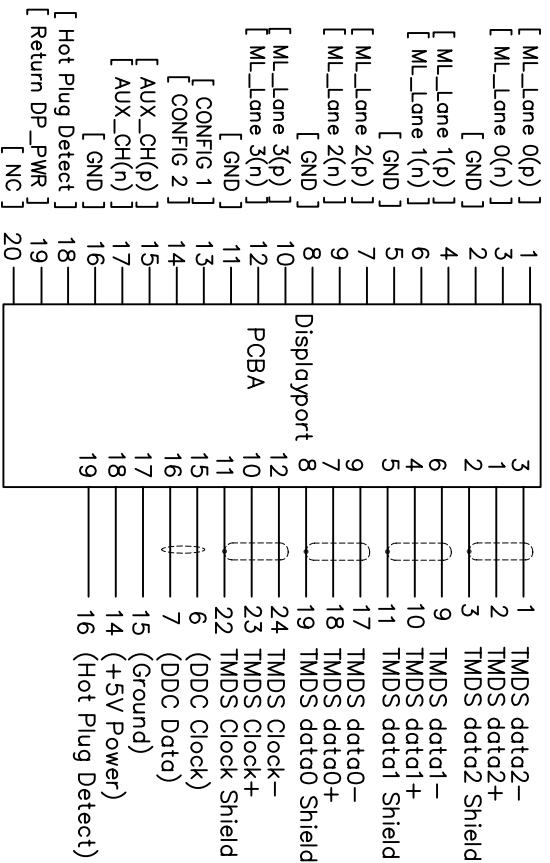
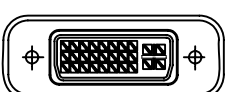
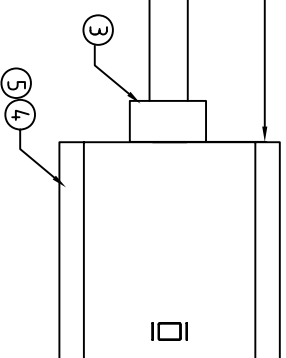


CUSTOMER APPROVED:

DATE:



1. Wiring Diagram.



SHELL _____ SHELL

5	PE	PE INSERMOLDING	10g	
4	CONN	DVI24+5 FEMALE INSULATION WHITE NICKRL PIN G/F W/WHITE COVER W/PCB+IC(NXP3361)	1SET	P2
3	PVC	45P PVC WHITE OVERMOLD	30g	
2	CONN	MINIDP20 MALE INSULATION WHITE NICKKEL PIN G/F W/WHITE HOOD	1SET	P1
1	CABLE	UL20276 (32AWG*1P+DW+AL/MY)*5+32AWG*5 C+A+D+B(16/6/0.1AAM) OD5.5 WHITE	1	500MM
NO.	PART NO.	DESCRIPTION	QTY	UNIT/REF
BILL OF MATERIAL				

A	2015044	INITIAL RELEASE	2015/04/14
REV#	ECN#	DESCRIPTION	DATE
Cnc Tech, LLC			
DRAWN	EDWIN LAI	DATE	04/14/15
CHECKED		CUSTOMER P/N:	
APPROVAL		CUSTOMER:	
TITLE		DWN NO.	REV
MINI DP/M TO DVI24+5/F		743-50011-00050	A
SHEET 1 OF 1		DATE	

X-ON Electronics

Largest Supplier of Electrical and Electronic Components

Click to view similar products for [cnc manufacturer](#):

Other Similar products are found below :

[741-20010-00500](#) [DL-5468](#) [2725-2828-01000-T](#) [300-30-40-GR-0250F](#) [743-60012-00300](#) [302-28-50-GR-0250F](#) [302-28-10-GR-0100F](#)
[3020-10-0300-00-TR](#) [FM-213-4](#) [FM-214-4](#) [302-28-26-GR-0250F](#) [302-28-40-GR-0250F](#) [304-28-26-MC-0250F](#) [304-28-40-MC-0250F](#)
[302-28-09-GR-0250F](#) [1002-003-02000](#) [302-28-37-GR-0250F](#) [302-28-25-GR-0250F](#) [3020-10-0300-00](#) [300-30-14-GR-0250F](#) [302-28-14-GR-](#)
[0250F](#) [300-30-04-GR-0250F](#) [300-30-26-GR-0250F](#) [304-28-16-MC-0250F](#) [304-28-26-MC-0100F](#) [302-28-10-GR-0250F](#) [800-1401-2-SJT0-](#)
[BL-00200](#) [300-30-20-GR-0250F](#) [304-28-14-MC-0250F](#) [800-1800-2-SVT0-BL-00100](#) [741-20010-01000](#) [CNC-99-16](#) [302-28-20-GR-0100F](#)
[302-28-26-GR-0100F](#) [304-28-40-MC-0100F](#) [600218](#) [510-26-6600-WH-0007F](#) [610230](#) [3010-10-003-13-00](#) [304-28-14-MC-0100F](#) [302-28-50-](#)
[GR-0100F](#) [3030-16-0102-00](#) [3221-10-0300-00](#) [304-28-16-MC-0100F](#) [610234](#) [302-28-37-GR-0100F](#) [800-12-32D-BL-0008F](#) [FM-215-8](#) [DL-](#)
[1006](#) [304-28-20-MC-0250F](#)