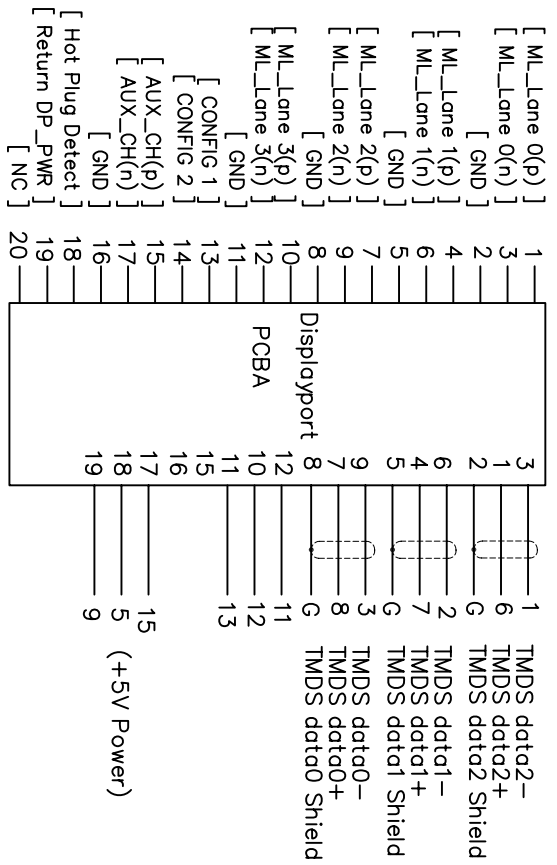
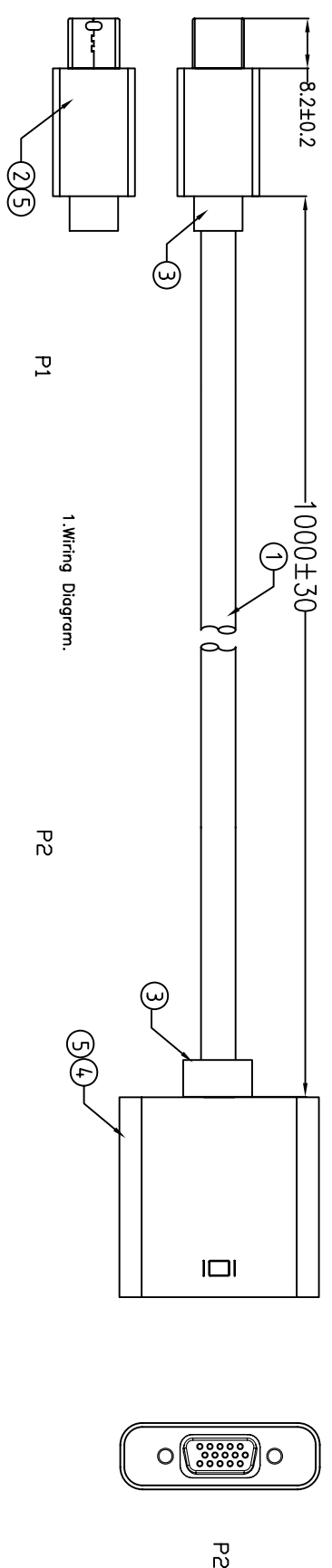
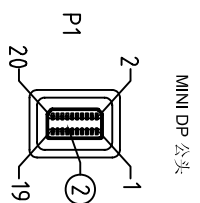


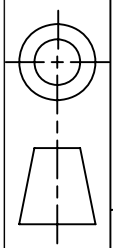
CUSTOMER APPROVED:

DATE:



SHELL ———— SHELL

5	PE	PE INSERMOLDING	10g		A	20150414	INITIAL RELEASE	2015/04/14
4	CONN	HDBIS FEMALE INSULATION BLUE NICKRL PIN G/F W/WHITE COVER W/PCB+IC(NXP9832)	1SET	P2	REV ECN#		DESCRIPTION	DATE
3	PVC	45P PVC WHITE OVERMOLD	30g		Cnc Tech, LLC DWN NO: 743-50012-00100 CUSTOMER P/N:			
2	CONN	MINIDP20 MALE INSULATION WHITE NICKKEL PIN G/F W/WHITE HDDD	1SET	P1				
1	CABLE	UL20276 (32AWG*1P+DW+AL/MY)*5+32AWG*5 C+A+D+B(16/6/0.1AAM) ODS.5 WHITE	1	1000MM	DRAWN	EDWIN LAI	DATE	04/14/15
NO. PART NO.				DESCRIPTION	QTY	UNIT/REF	CHECKED	CUSTOMER P/N:
				DESCRIPTION			APPROVAL	
				BILL OF MATERIAL				



X-ON Electronics

Largest Supplier of Electrical and Electronic Components

Click to view similar products for [cnc manufacturer](#):

Other Similar products are found below :

[741-20010-00500](#) [DL-5468](#) [2725-2828-01000-T](#) [300-30-40-GR-0250F](#) [743-60012-00300](#) [302-28-50-GR-0250F](#) [302-28-10-GR-0100F](#)
[3020-10-0300-00-TR](#) [FM-213-4](#) [FM-214-4](#) [302-28-26-GR-0250F](#) [302-28-40-GR-0250F](#) [304-28-26-MC-0250F](#) [304-28-40-MC-0250F](#)
[302-28-09-GR-0250F](#) [1002-003-02000](#) [302-28-37-GR-0250F](#) [302-28-25-GR-0250F](#) [3020-10-0300-00](#) [300-30-14-GR-0250F](#) [302-28-14-GR-](#)
[0250F](#) [300-30-04-GR-0250F](#) [300-30-26-GR-0250F](#) [304-28-16-MC-0250F](#) [304-28-26-MC-0100F](#) [302-28-10-GR-0250F](#) [800-1401-2-SJT0-](#)
[BL-00200](#) [300-30-20-GR-0250F](#) [304-28-14-MC-0250F](#) [800-1800-2-SVT0-BL-00100](#) [741-20010-01000](#) [CNC-99-16](#) [302-28-20-GR-0100F](#)
[302-28-26-GR-0100F](#) [304-28-40-MC-0100F](#) [600218](#) [510-26-6600-WH-0007F](#) [610230](#) [3010-10-003-13-00](#) [304-28-14-MC-0100F](#) [302-28-50-](#)
[GR-0100F](#) [3030-16-0102-00](#) [3221-10-0300-00](#) [304-28-16-MC-0100F](#) [610234](#) [302-28-37-GR-0100F](#) [800-12-32D-BL-0008F](#) [FM-215-8](#) [DL-](#)
[1006](#) [304-28-20-MC-0250F](#)