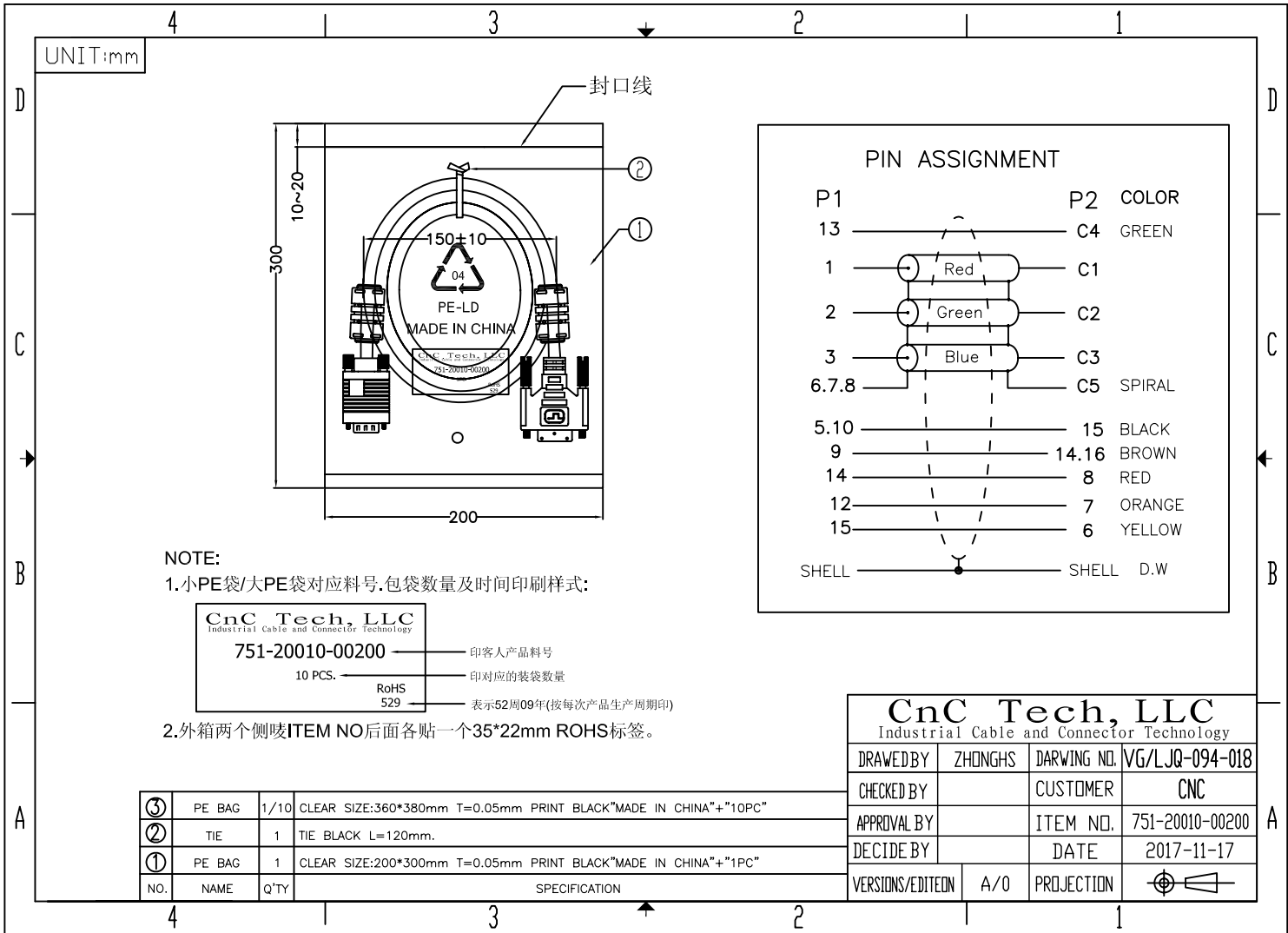


Electronic Test:
 1.100% Test,(Open,Short,Miss Wire)
 2.Contact Resistance:2 ohm max.
 3.Insulation Resistance:10M ohm min.
 4.Hi-Pot:300V DC/10ms
 5.BENDING TEST:ANGLE 90°,BENDING 2~3 TIMES UP AND DOWN.

CnC Tech, LLC Industrial Cable and Connector Technology			
DRAWN BY	LYNDON	DARWING NO.	VG/LJQ-094-018
CHECKED BY		CUSTOMER	CNC
APPROVAL BY		ITEM NO.	751-20010-00200
DECIDE BY		DATE	2017-11-17
VERSIONS/EDITEON	A/0	PROJECTION	

NO.	NAME	Q'TY	SPECIFICATION
⑬	TUBE	6	HEAT SHRINK TUBE BLACK OD3.0mm L=8mm.
		2	HEAT SHRINK TUBE BLACK OD2.0mm L=15mm.
		2	HEAT SHRINK TUBE BLACK OD1.0mm L=25mm.
⑫	COPPER FOIL	1	DOUBLE-SIDED CONDUCTIVE COPPER FOIL W25mm L=60mm.
⑪	COPPER FOIL	1	DOUBLE-SIDED CONDUCTIVE COPPER FOIL W30mm*L75mm
⑩	IN JACKET	10g	INNER MOID:CLEAR LDPE
⑨	IN JACKET	4g	CLEAR PE(NM-15)
	OUT JACKET	15g	WHITE(EC-005/W-18#) PVC 50P(WM-17)
⑧	OUT JACKET	30g	OUTER MOLD:45P PVC BLUE(PT:661C/BE-54#).
⑦	OUT JACKET	20g	BLACK PVC 45P (CH-002)
⑥	FERRITE	2	Core:RH17.5*10.6*28.5mm
⑤	SCREW	2	SCREW:HD40.5 #4-40UNC PLATED NI MOLD:BLUE(PT:661C/BE-54#).ABS
④	SCREW	2	SCREW #4*40UNS ϕ 2.8*L32mm NICKEL MOLD WHITE(EC-005/W-18#) ABS
③	CONN	1	HD15P MALE INSULATION BLUE.SHELL NICKEL,PIN GOLD FLASH.
②	CONN	1	DVI(18+5) MALE INSULATION BLACK.SHELL NICKEL,PIN GOLD FLASH.
①	CABLE	1	UL20276 [30AWG*3Coax+28AWG*7C]+AL/MY+D.W+BD+JACKET:BLACK 表面 OD:7.0 \pm 0.15mm L=2000+50/-0mm.



PIN ASSIGNMENT		
P1	P2	COLOR
13	C4	GREEN
1	C1	Red
2	C2	Green
3	C3	Blue
6.7.8	C5	SPIRAL
5.10	15	BLACK
9	14.16	BROWN
14	8	RED
12	7	ORANGE
15	6	YELLOW
SHELL	SHELL	D.W

NOTE:
 1.小PE袋/大PE袋对应料号,包袋数量及时间印刷样式:

 印客人产品料号
 印对应的装袋数量
 表示52周09年(按每次产品生产周期期印)

2.外箱两个侧唛ITEM NO后面各贴一个35*22mm ROHS标签。

NO.	NAME	Q'TY	SPECIFICATION
③	PE BAG	1/10	CLEAR SIZE:360*380mm T=0.05mm PRINT BLACK"MADE IN CHINA"+"10PC"
②	TIE	1	TIE BLACK L=120mm.
①	PE BAG	1	CLEAR SIZE:200*300mm T=0.05mm PRINT BLACK"MADE IN CHINA"+"1PC"

CnC Tech, LLC Industrial Cable and Connector Technology			
DRAWN BY	ZHONGHS	DARWING NO.	VG/LJQ-094-018
CHECKED BY		CUSTOMER	CNC
APPROVAL BY		ITEM NO.	751-20010-00200
DECIDE BY		DATE	2017-11-17
VERSIONS/EDITEON	A/0	PROJECTION	

X-ON Electronics

Largest Supplier of Electrical and Electronic Components

Click to view similar products for [cnc manufacturer](#):

Other Similar products are found below :

[741-20010-00500](#) [DL-5468](#) [2725-2828-01000-T](#) [300-30-40-GR-0250F](#) [743-60012-00300](#) [302-28-50-GR-0250F](#) [302-28-10-GR-0100F](#)
[3020-10-0300-00-TR](#) [FM-213-4](#) [FM-214-4](#) [302-28-26-GR-0250F](#) [302-28-40-GR-0250F](#) [304-28-26-MC-0250F](#) [304-28-40-MC-0250F](#)
[302-28-09-GR-0250F](#) [1002-003-02000](#) [302-28-37-GR-0250F](#) [302-28-25-GR-0250F](#) [3020-10-0300-00](#) [300-30-14-GR-0250F](#) [302-28-14-GR-](#)
[0250F](#) [300-30-04-GR-0250F](#) [300-30-26-GR-0250F](#) [304-28-16-MC-0250F](#) [304-28-26-MC-0100F](#) [302-28-10-GR-0250F](#) [800-1401-2-SJT0-](#)
[BL-00200](#) [300-30-20-GR-0250F](#) [304-28-14-MC-0250F](#) [800-1800-2-SVT0-BL-00100](#) [741-20010-01000](#) [CNC-99-16](#) [302-28-20-GR-0100F](#)
[302-28-26-GR-0100F](#) [304-28-40-MC-0100F](#) [600218](#) [510-26-6600-WH-0007F](#) [610230](#) [3010-10-003-13-00](#) [304-28-14-MC-0100F](#) [302-28-50-](#)
[GR-0100F](#) [3030-16-0102-00](#) [3221-10-0300-00](#) [304-28-16-MC-0100F](#) [610234](#) [302-28-37-GR-0100F](#) [800-12-32D-BL-0008F](#) [FM-215-8](#) [DL-](#)
[1006](#) [304-28-20-MC-0250F](#)