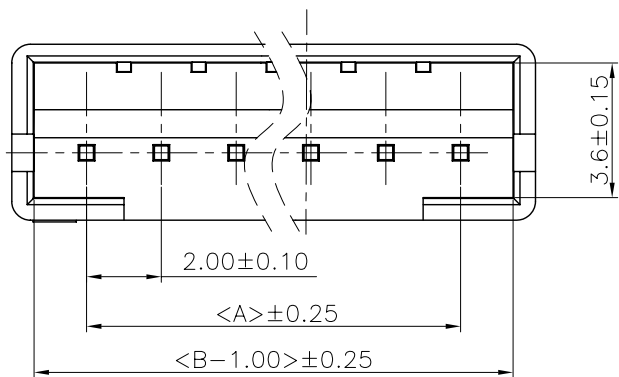
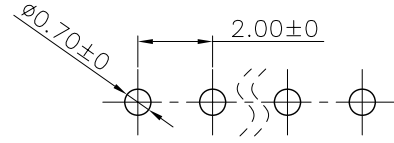


REV.	ECN NO.	DESCRIPTION	DATE	DESIGN

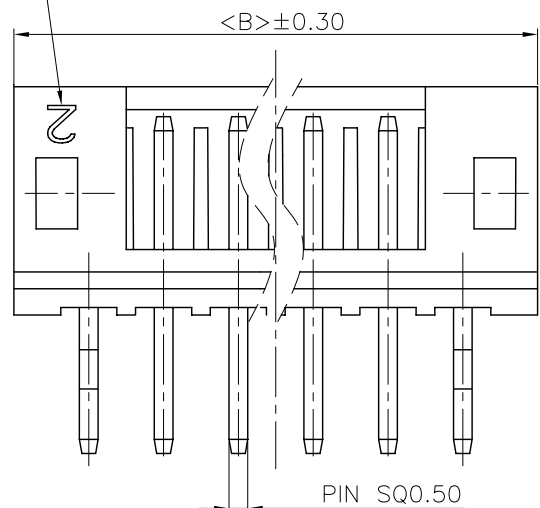


Recommended P.C.B Layout(Top Side)  
P.C.B Thickness = 1.20mm  
(Tolerance=±0.05)

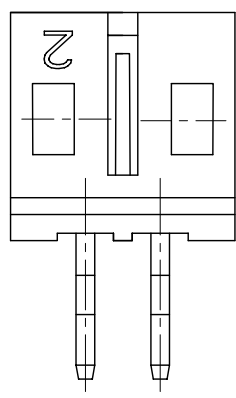


Specifications:  
Current rating:2A AC/DC.  
Voltage rating:100V AC/DC  
Temperature range:-40°C~+105°C.  
Contact resistance:10mΩ Max.  
Insulation resistance:1000MΩ Min.  
Withstanding voltage: 800V AC/minute.  
Material:PA66.UL94V-0.

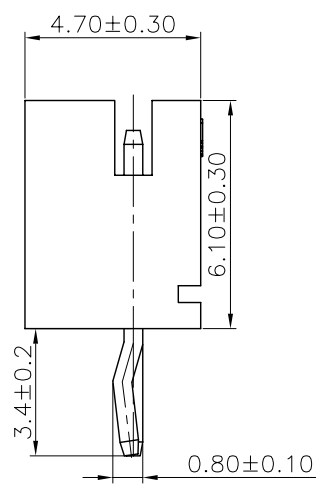
模穴号 1.2.3...



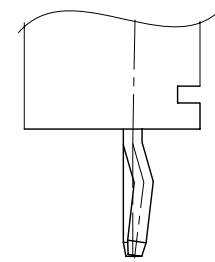
2 PIN 以上图示



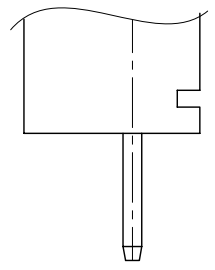
2 PIN 图示



打反“K”



打正“K”



无“K”

PART NO.	Dimensions	
	A	B
A2001WV-02P	2.00	6.00
A2001WV-03P	4.00	8.00
A2001WV-04P	6.00	10.00
A2001WV-05P	8.00	12.00
A2001WV-06P	10.00	14.00
A2001WV-07P	12.00	16.00
A2001WV-08P	14.00	18.00
A2001WV-09P	16.00	20.00
A2001WV-10P	18.00	22.00
A2001WV-11P	20.00	24.00
A2001WV-12P	22.00	26.00
A2001WV-13P	24.00	28.00
A2001WV-14P	26.00	30.00
A2001WV-15P	28.00	32.00
A2001WV-16P	30.00	34.00

**CNJM** Joint More Precision electronics Co.,Led.

DRAW NO.		DATE	P/N NO:	DRAW NAME:
DESIGN:	陈雪峰	17/06/03	A2001WV-NP	2.0mm pitch 180° Wafer
CHECK:	杨 辉			
REVIEW:			REV. A/1	SCALE 1:1
			UNIT: mm	SHEET: 1 OF 1

DIM	TOL	DIM	TOL
X.	/	X'	/
X.X	±0.25	X.X'	±2'
X.XX	±0.20	X.XX'	±1'
X.XXX	±0.10	X.XXX'	/

## X-ON Electronics

Largest Supplier of Electrical and Electronic Components

*Click to view similar products for [Headers & Wire Housings](#) category:*

*Click to view products by [CNJM](#) manufacturer:*

Other Similar products are found below :

[57102-F02-18ULF](#) [58102-G61-06LF](#) [582553-1](#) [009176003701906](#) [01.001.5753.1](#) [0050291907](#) [02.125.8002.8](#) [609-3404](#) [61062-3](#)  
[CSU011177004](#) [622-0430](#) [622-3653LF](#) [63453-116](#) [636-1030](#) [636-1427](#) [636-3427](#) [636-4007](#) [641938-9](#) [65495-038](#) [65692-001LF](#) [65781-018](#)  
[65781-047](#) [65817-010LF](#) [65817-015LF](#) [66207-023LF](#) [67095-007LF](#) [67601157](#) [68631-112](#) [68645-018](#) [699319-000](#) [M90C108951C](#)  
[70.362.1628.0](#) [70-4210](#) [70-4226B](#) [70-4853B](#) [707-5028](#) [71.350.2428.0](#) [71961-016LF](#) [733-134](#) [733-162](#) [754199-000](#) [760-3052](#) [80.063.4001.1](#)  
[800-90-001-10-001000](#) [800-90-010-10-002000](#) [801-43-002-10-013000](#) [801-43-006-10-002000](#) [803-41-018-10-001000](#) [803-43-024-10-](#)  
[001000](#) [803-93-012-10-001000](#)