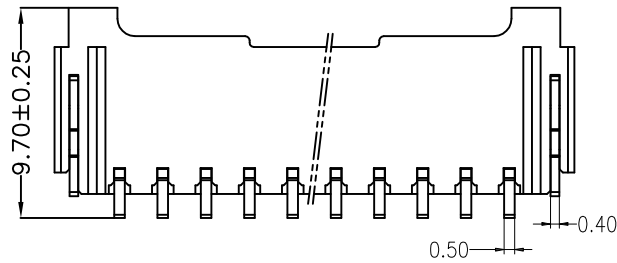
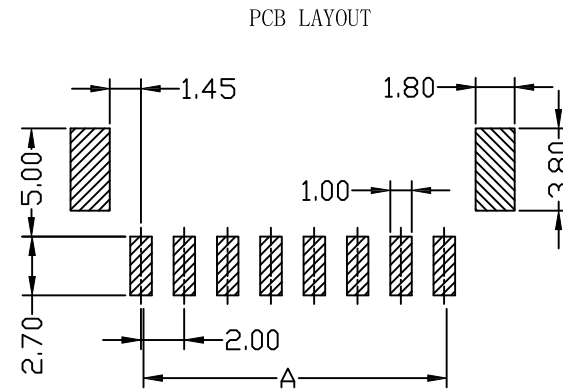
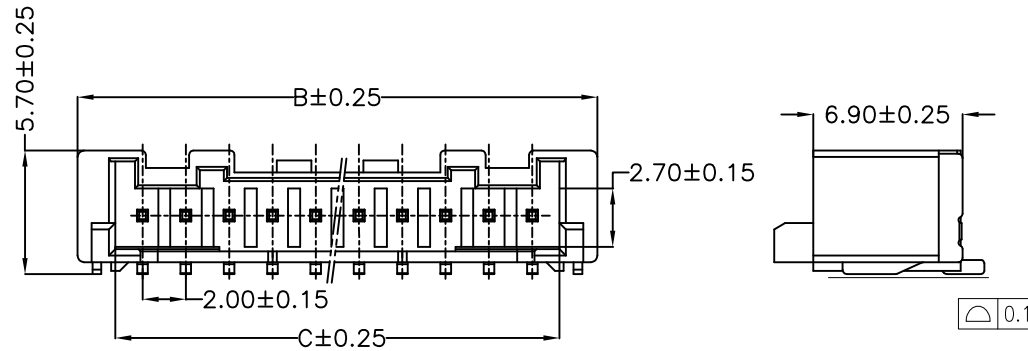
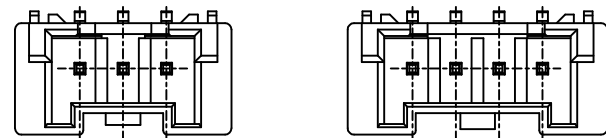
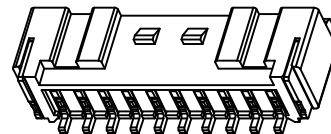
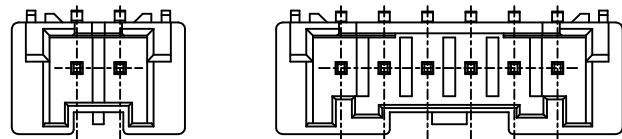
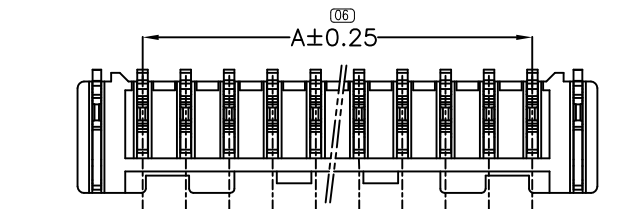


REV A/2	ECN NO.	DESCRIPTION 完善图纸	DATE 21/11/17	DESIGN SU LIAN
------------	---------	---------------------	------------------	-------------------



Specifications:  
 Current rating:3A AC/DC.  
 Voltage rating:250V AC/DC  
 Temperature range:-25°C~+85°C.  
 Contact resistance:10MΩ Max.  
 Insulation resistance:1000MΩ Min.  
 Withstanding voltage: 800V AC/minute.  
 Material:PA6T.UL94V-0.E630N-CHINA.  
**Color:Natural(Ivory).**  
 PIN: Phosphor Bronze.  
 Solder Tabs: Brass.

PART NO.	Dimensions		
	A	B	C
A2012WR-S-02P	2.00	8.00	4.50
A2012WR-S-03P	4.00	10.00	6.50
A2012WR-S-04P	6.00	12.00	8.50
A2012WR-S-05P	8.00	14.00	10.50
A2012WR-S-06P	10.00	16.00	12.50
A2012WR-S-07P	12.00	18.00	14.50
A2012WR-S-08P	14.00	20.00	16.50
A2012WR-S-09P	16.00	22.00	18.50
A2012WR-S-10P	18.00	24.00	20.50
A2012WR-S-11P	20.00	26.00	22.50
A2012WR-S-12P	22.00	28.00	24.50
A2012WR-S-13P	24.00	30.00	26.50
A2012WR-S-14P	26.00	32.00	28.50
A2012WR-S-15P	28.00	34.00	30.50



**CNJM** Joint More Precision electronics Co.,Ltd.

DRAW NO.	DATE	P/N NO:	DRAW NAME:
DESIGN: 陈雪峰	2018.03.25	A2012WR-S-NP	2.0mm pitch 90° wafer
CHECK: 杨 焯		REV.A/2	SCALE 1:1
REVIEW:		UNIT: mm	SHEET: 1 OF 1

DIM	TOL	DIM	TOL
X.	/	X°.	/
X.X	0.35	X.X°	/
X.XX	0.25	X.XX°	/
X.XXX	0.15	X.XXX°	/

## X-ON Electronics

Largest Supplier of Electrical and Electronic Components

*Click to view similar products for [Headers & Wire Housings](#) category:*

*Click to view products by [CNJM](#) manufacturer:*

Other Similar products are found below :

[57102-F02-18ULF](#) [58102-G61-06LF](#) [582553-1](#) [009176003701906](#) [01.001.5753.1](#) [0050291907](#) [02.125.8002.8](#) [609-3404](#) [61062-3](#)  
[CSU011177004](#) [622-0430](#) [622-3653LF](#) [63453-116](#) [636-1030](#) [636-1427](#) [636-3427](#) [636-4007](#) [641938-9](#) [65495-038](#) [65692-001LF](#) [65781-018](#)  
[65781-047](#) [65817-010LF](#) [65817-015LF](#) [66207-023LF](#) [67095-007LF](#) [67601157](#) [68631-112](#) [68645-018](#) [699319-000](#) [M90C108951C](#)  
[70.362.1628.0](#) [70-4210](#) [70-4226B](#) [70-4853B](#) [707-5028](#) [71.350.2428.0](#) [71961-016LF](#) [733-134](#) [733-162](#) [754199-000](#) [760-3052](#) [80.063.4001.1](#)  
[800-90-001-10-001000](#) [800-90-010-10-002000](#) [801-43-002-10-013000](#) [801-43-006-10-002000](#) [803-41-018-10-001000](#) [803-43-024-10-](#)  
[001000](#) [803-93-012-10-001000](#)