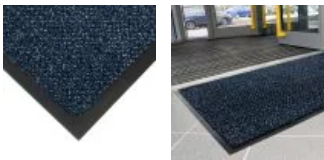


## Cosmo Doormat

Superior fire tested doormat for busy entrances



- Hardwearing polyamide carpet surface doormat.
- Suitable durability for high traffic entrance areas.
- Fibres scrape and wipe moisture from footwear for effective floor protection.
- Fully fire tested – see datasheet for details.
- Anti-slip vinyl backing helps maintain mat position, even on smooth floors.
- UV and temperature resistant from 0°C to 60°C.



### Styles Available



Beige

Brown

Blue

Grey

### Parts

Part Number	Size	Colour	Weight
CSM010601	0.6 m x 0.9 m	Grey/Black	1.9 kg
CSM010602	0.9 m x 1.5 m	Grey/Black	4.7 kg
CSM010603	1.3 x 2 m	Grey/Black	9.1 kg
CSM060201	0.6 m x 0.9 m	Grey/Blue	1.9 kg
CSM060202	0.9 m x 1.5 m	Grey/Blue	4.7 kg
CSM060203	1.3 x 2 m	Grey/Blue	9.1 kg
CSM060501	0.6 m x 0.9 m	Grey/Brown	1.9 kg
CSM060502	0.9 m x 1.5 m	Grey/Brown	4.7 kg
CSM060503	1.3 x 2 m	Grey/Brown	9.1 kg

### Technical Specification

<b>Material</b>	PA
<b>Backing</b>	Vinyl
<b>Product Height</b>	8 mm
<b>Product Weight</b>	3.5Kg/ m2
<b>Operating Temperature</b>	0°C to +60°C
<b>Environmental Resistance</b>	Suitable for indoor environments only
<b>UV Resistance</b>	Yes
<b>Typical Applications</b>	Entrance areas
<b>Installation Method</b>	Loose lay
<b>Fire Tested to</b>	Flame retardant to Cfl-S1.

CSM060701	0.6 m x 0.9 m	Grey/Beige	1.9 kg
CSM060702	0.9 m x 1.5 m	Grey/Beige	4.7 kg
CSM060703	1.3 x 2 m	Grey/Beige	9.1 kg

<b>Country of Origin</b>	Belgium
<b>Coating Thickness</b>	2 mm
<b>Tuft density</b>	110,000/ m2
<b>Manufacturing process</b>	Tufting 5/32'

Get in touch | To order FREE samples or arrange a site visit please call +44 (0)116 240 1088 or email [sales@cobaeurope.com](mailto:sales@cobaeurope.com)

## X-ON Electronics

Largest Supplier of Electrical and Electronic Components

*Click to view similar products for [PPE Safety Equipment / Lockout Tagout](#) category:*

*Click to view products by [COBA](#) manufacturer:*

Other Similar products are found below :

[AB12-SF1260](#) [GPSL-6KA](#) [GPSL-8MKEY](#) [35035](#) [702201756](#) [PSL-PC38-33](#) [7100078986](#) [132231](#) [44-809](#) [G3000NUV-VI-R](#) [STC1165](#)  
[STC5951](#) [WC000003](#) [509-0015](#) [509-0017](#) [509-0019](#) [509-0020](#) [509-0021](#) [509-0022](#) [509-0002](#) [509-0003](#) [509-0004](#) [509-0006](#) [109-0920](#)  
[109-0917](#) [109-0918](#) [109-0919](#) [DYC200-01-01-9-DYCLEAN-S](#) [109-0027](#) [X2A](#) [26702](#) [28774](#) [SFTY PADLOCK NYLON 38MM SHA](#)  
[YELLOW 6/PAC](#) [FMFR 12](#) [FMFR 12-AUT](#) [FMFR 14](#) [FMFR 14 MIDI](#) [FMFR 18](#) [FMFR 38](#) [FML 12](#) [FML 14](#) [FML 14 MIDI](#) [FML 18](#)  
[FMR 12](#) [FMR 18](#) [FMR 38](#) [603](#) [30-551-3040](#) [30-552-0010](#) [30-552-6012](#)