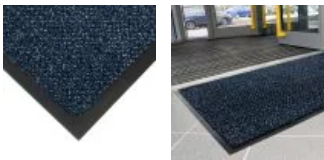


Cosmo Doormat

Superior fire tested doormat for busy entrances



- Hardwearing polyamide carpet surface doormat.
- Suitable durability for high traffic entrance areas.
- Fibres scrape and wipe moisture from footwear for effective floor protection.
- Fully fire tested – see datasheet for details.
- Anti-slip vinyl backing helps maintain mat position, even on smooth floors.
- UV and temperature resistant from 0°C to 60°C.



Styles Available



Beige

Brown

Blue

Grey

Parts

Part Number	Size	Colour	Weight
CSM010601	0.6 m x 0.9 m	Grey/Black	1.9 kg
CSM010602	0.9 m x 1.5 m	Grey/Black	4.7 kg
CSM010603	1.3 x 2 m	Grey/Black	9.1 kg
CSM060201	0.6 m x 0.9 m	Grey/Blue	1.9 kg
CSM060202	0.9 m x 1.5 m	Grey/Blue	4.7 kg
CSM060203	1.3 x 2 m	Grey/Blue	9.1 kg
CSM060501	0.6 m x 0.9 m	Grey/Brown	1.9 kg
CSM060502	0.9 m x 1.5 m	Grey/Brown	4.7 kg
CSM060503	1.3 x 2 m	Grey/Brown	9.1 kg

Technical Specification

Material	PA
Backing	Vinyl
Product Height	8 mm
Product Weight	3.5Kg/ m2
Operating Temperature	0°C to +60°C
Environmental Resistance	Suitable for indoor environments only
UV Resistance	Yes
Typical Applications	Entrance areas
Installation Method	Loose lay
Fire Tested to	Flame retardant to Cfl-S1.

CSM060701	0.6 m x 0.9 m	Grey/Beige	1.9 kg
CSM060702	0.9 m x 1.5 m	Grey/Beige	4.7 kg
CSM060703	1.3 x 2 m	Grey/Beige	9.1 kg

Country of Origin	Belgium
Coating Thickness	2 mm
Tuft density	110,000/ m2
Manufacturing process	Tufting 5/32'

Get in touch | To order FREE samples or arrange a site visit please call +44 (0)116 240 1088 or email sales@cobaeurope.com

X-ON Electronics

Largest Supplier of Electrical and Electronic Components

Click to view similar products for [PPE Safety Equipment / Lockout Tagout](#) category:

Click to view products by [COBA](#) manufacturer:

Other Similar products are found below :

[AB12-SF1260](#) [GPSL-6KA](#) [GPSL-8MKEY](#) [35035](#) [702201756](#) [PSL-PC38-33](#) [7100078986](#) [132231](#) [44-809](#) [G3000NUV-VI-R](#) [STC1165](#)
[STC5951](#) [WC000003](#) [509-0015](#) [509-0017](#) [509-0019](#) [509-0020](#) [509-0021](#) [509-0022](#) [509-0002](#) [509-0003](#) [509-0004](#) [509-0006](#) [109-0920](#)
[109-0917](#) [109-0918](#) [109-0919](#) [DYC200-01-01-9-DYCLEAN-S](#) [109-0027](#) [X2A](#) [26702](#) [28774](#) [SFTY PADLOCK NYLON 38MM SHA](#)
[YELLOW 6/PAC](#) [FMFR 12](#) [FMFR 12-AUT](#) [FMFR 14](#) [FMFR 14 MIDI](#) [FMFR 18](#) [FMFR 38](#) [FML 12](#) [FML 14](#) [FML 14 MIDI](#) [FML 18](#)
[FMR 12](#) [FMR 18](#) [FMR 38](#) [603](#) [30-551-3040](#) [30-552-0010](#) [30-552-6012](#)