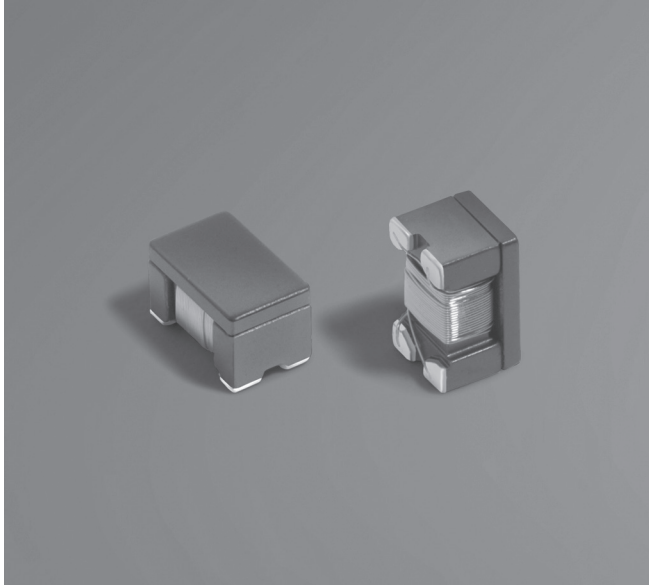


Common Mode Choke 1812CANbus



- Designed for common mode noise suppression on CAN or CAN FD in automotive or general industrial automation applications
- Can be used for FlexRay automotive bus system
- 50% lower DCR and higher current handling than other CANbus chokes in the market
- Filters a broad frequency range of common mode noise
- Low profile 1812 footprint: 4.95 × 3.18 × 3.0 mm

Core material Ferrite

Environmental RoHS compliant, halogen free

Weight 120 – 130 mg

Terminations RoHS compliant matte tin over nickel over silver-palladium-glass frit.

Ambient temperature -40°C to +125°C with Irms current.

Maximum Part Temperature +150°C

Storage temperature Component: -40°C to +150°C.

Tape and reel packaging: -40°C to +80°C

Resistance to soldering heat Max three 40 second reflows at +260°C, parts cooled to room temperature between cycles

Moisture Sensitivity Level (MSL) 1 (unlimited floor life at <30°C / 85% relative humidity)

PCB washing Tested to MIL-STD-202 Method 215 plus an additional aqueous wash. See [Doc787_PCB_Washing.pdf](#).

Part number ¹	Inductance ² ±30% (µH)	DCR max ³ (Ohms)	Isolation ⁴ (Vrms)	Irms ⁵ (mA)
1812CAN-113NR_	11	0.27	250	460
1812CAN-223NR_	22	0.40	250	400
1812CAN-513NR_	51	0.59	250	300
1812CAN-104NR_	100	1.0	250	260

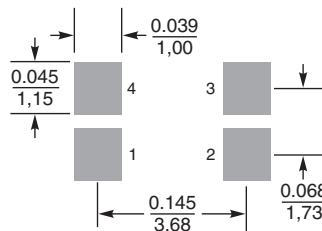
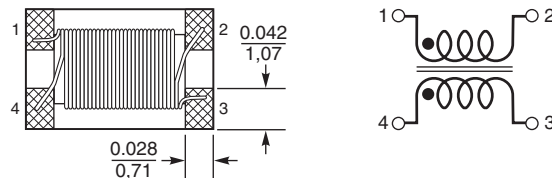
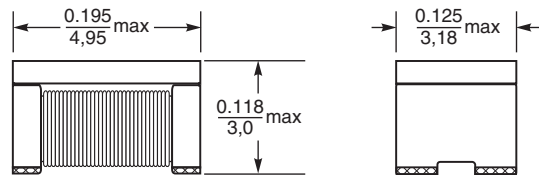
1. When ordering, please specify **packaging** code:

1812CAN-104NRC

Packaging: **C** = 7 machine-ready reel. EIA-481 embossed plastic tape (600 parts per full reel). Quantities less than full reel available: in tape (not machine ready) or with leader and trailer (\$25 charge).

D = 13 machine-ready reel. EIA-481 embossed plastic tape. Factory order only, not stocked (2200 parts per full reel).

- Inductance is per winding, measured at 100 kHz, 0.1 Vrms, 0 Adc using an Agilent/ HP 4263B LCR meter and a Coilcraft CCF 1113 fixture.
 - DCR is specified per winding, measured at on a Keithley 580 micro-ohmmeter and a Coilcraft CCF 858 fixture.
 - Winding to winding isolation (hipot) tested for one minute.
 - Current per winding that causes a 25°C rise from +125°C ambient.
 - Electrical specifications at 25°C.
- Refer to Doc 362 "Soldering Surface Mount Components" before soldering.



Recommended Land Pattern

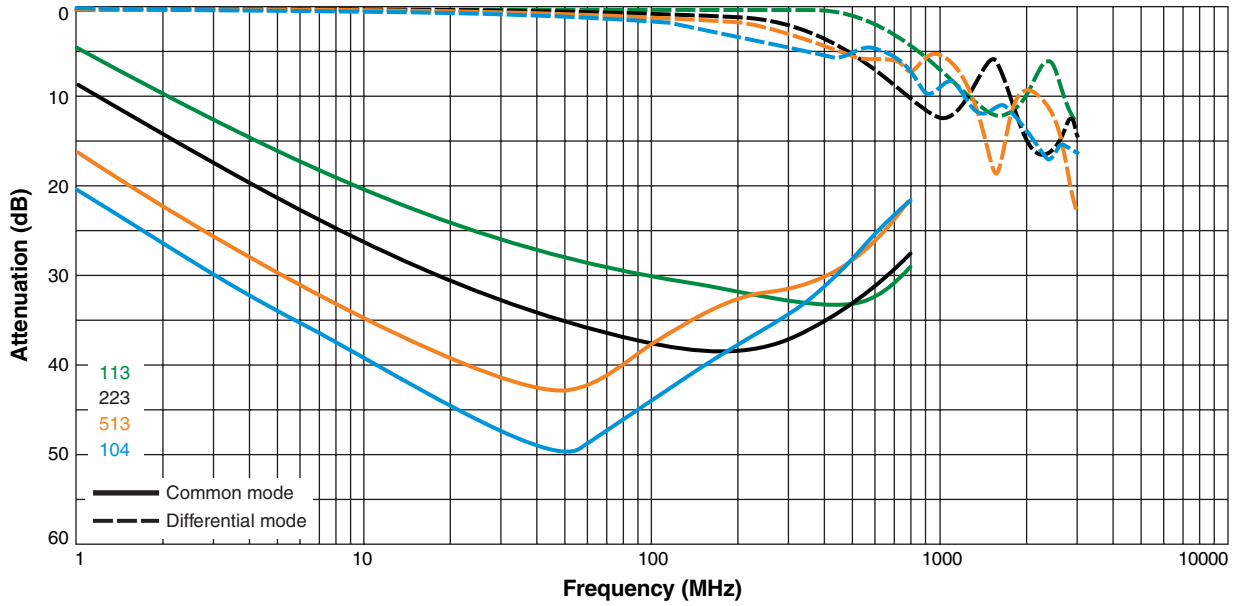
Dimensions are in $\frac{\text{inches}}{\text{mm}}$

Packaging 600/7" reel; 2200/13" reel; Plastic tape: 12 mm wide, 0.30 mm thick, 8 mm pocket spacing, 3.05 mm pocket depth

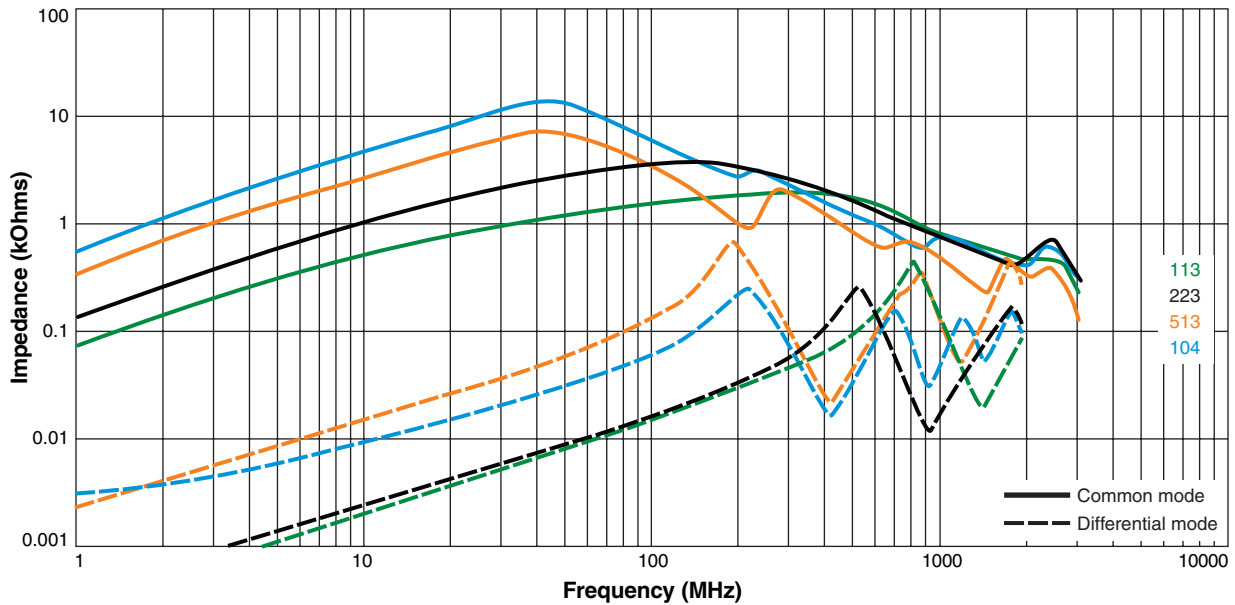


Common Mode Choke – 1812CANbus

Typical Attenuation (Ref: 50 Ohms)



Typical Impedance vs Frequency



X-ON Electronics

Largest Supplier of Electrical and Electronic Components

Click to view similar products for [Common Mode Chokes / Filters](#) category:

Click to view products by [Coilcraft](#) manufacturer:

Other Similar products are found below :

[74279408](#) [PE-62911NL](#) [PE-64683](#) [ST6118T-R](#) [T8114NLT](#) [RD5122-10-6M0](#) [TCM0806G-350-2P-T](#) [TCM0806G-650-2P-T](#) [IND-0110](#)
[UAL21V07012500](#) [UAL24VR06500CH](#) [UALSC023000000](#) [UALSC1020JH000](#) [UALSC1520JH000](#) [UALSU16VD30030](#)
[UALSU16VD40010](#) [UALSU9H0305000](#) [UALSU9HF060300](#) [UALSU9VD070100](#) [36-00037](#) [5701610000](#) [UALW21HS072450](#)
[UALSU9VD070400](#) [UALSU9HF050500](#) [UALSU9H0208000](#) [UALSCF25081300](#) [UAL24VK06450CH](#) [PLT10HH501100PNB](#)
[PLT10HH401100PNB](#) [PLT10HH1026R0PNB](#) [PE-67531](#) [EXC-X4CH120X](#) [TLH10UB 113 0R5](#) [2752041447](#) [2752045447](#) [CMS3-11-R](#)
[7351V](#) [CMF16-153131](#) [744252510](#) [T8116NLT](#) [FE2X10-4-2NL](#) [744253200](#) [744253101](#) [744252220](#) [TX8111NLT](#) [UAL30VR3500470](#)
[CTX01-19077-R](#) [T8003NLT](#) [CTX01-13663](#) [CTX66-19521-R](#)