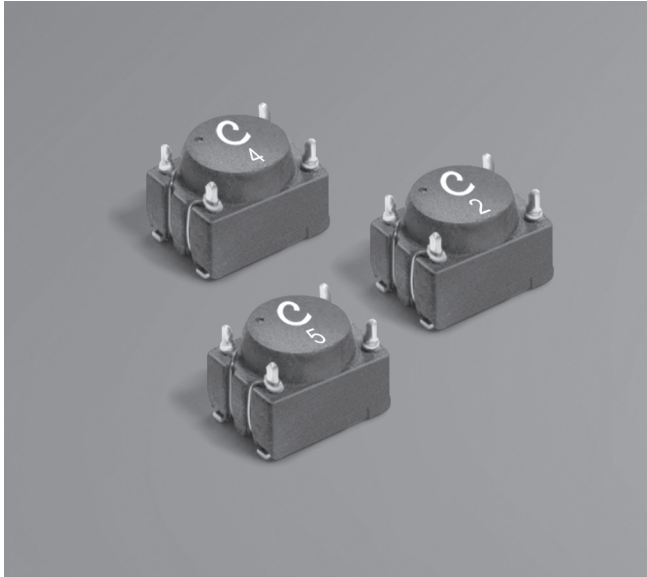


SMT Data Line EMI Filters DFT4532



- Current-compensated ring core double choke
- Miniature footprint; less than 3.2 mm tall
- Exceptional common mode noise attenuation
- AEC-Q200 Grade 3 (-40°C to +85°C)
- 250 Vrms, one minute isolation (hipot) between windings

Core material Ferrite
Environmental RoHS compliant
Terminations RoHS compliant matte tin over nickel over phos-bronze
Weight 78 – 86 mg
Ambient temperature -40°C to +85°C with Irms current
Maximum part temperature +105°C (ambient + temp rise)
Storage temperature Component: -40°C to +105°C.
 Tape and reel packaging: -40°C to +80°C
Resistance to soldering heat Max three 40 second reflows at +260°C, parts cooled to room temperature between cycles
Moisture Sensitivity Level (MSL) 1 (unlimited floor life at <30°C / 85% relative humidity)
Packaging 600/7" reel; 2000/13" reel Plastic tape: 12 mm wide, 0.4 mm thick, 8 mm pocket spacing, 3.43 mm pocket depth
PCB washing Tested to MIL-STD-202 Method 215 plus an additional aqueous wash. See [Doc787_PCB_Washing.pdf](#).

Part number ¹	Common mode impedance max (kOhms)	Cutoff frequency ² (MHz)	Inductance ³ (mH)		Test frequency (kHz)	Irms ⁴ (mA)	DCR (Ohms) ⁵		Leakage inductance max (µH)	Value Marking
			nom	min			nom	max		
DFT4532-513BL_	2.01 @ 61 MHz	670	0.051	0.0357	100	370	0.250	0.320	0.100	5
DFT4532-513SL_	1.92 @ 99 MHz	28	0.051	0.0357	100	370	0.250	0.320	1.600	6
DFT4532-104BL_	0.64 @ 9.7 MHz	900	0.100	0.070	100	500	0.150	0.200	0.070	1
DFT4532-224BL_	1.40 @ 13 MHz	650	0.220	0.154	100	400	0.200	0.270	0.080	2
DFT4532-334BL_	1.96 @ 9.6 MHz	520	0.330	0.231	100	370	0.250	0.320	0.100	3
DFT4532-474BL_	3.04 @ 9.6 MHz	490	0.470	0.329	100	350	0.320	0.380	0.130	4

1. When ordering, please specify **termination** and **packaging** code:

DFT4532-474BLC

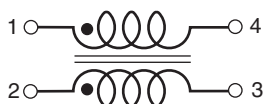
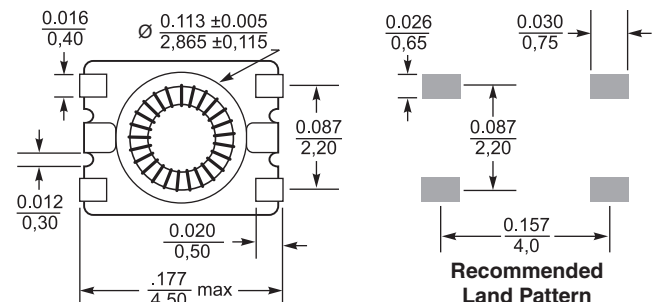
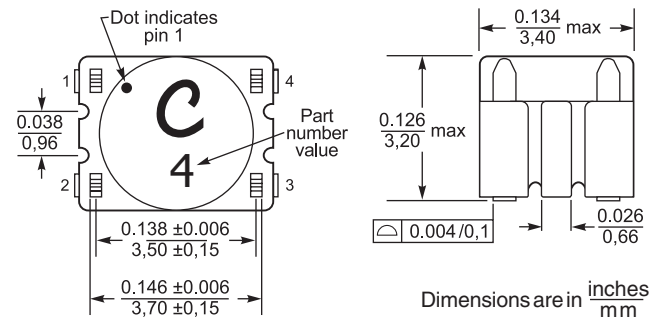
Termination: L = RoHS compliant matte tin over nickel over phosphor-bronze

Special order, add cost: S = non-RoHS tin-lead (63/37)

Packaging: C = 7" machine-ready reel. EIA-481 embossed plastic tape (600 parts per full reel). Quantities less than full reel available: in tape (not machine ready) or with leader and trailer (\$25 charge)

D = 13" machine-ready reel. EIA-481 embossed plastic tape. Factory order only, not stocked (2000 parts per full reel).

2. Frequency at which the differential mode attenuation equals 3 dB
 3. Inductance is for each winding, measured at test frequency using a Volttech AT3600 or equivalent.
 4. Current that causes a 20°C temperature rise from 25°C ambient.
 5. DCR is specified per winding.
- Refer to Doc 362 "Soldering Surface Mount Components" before soldering.

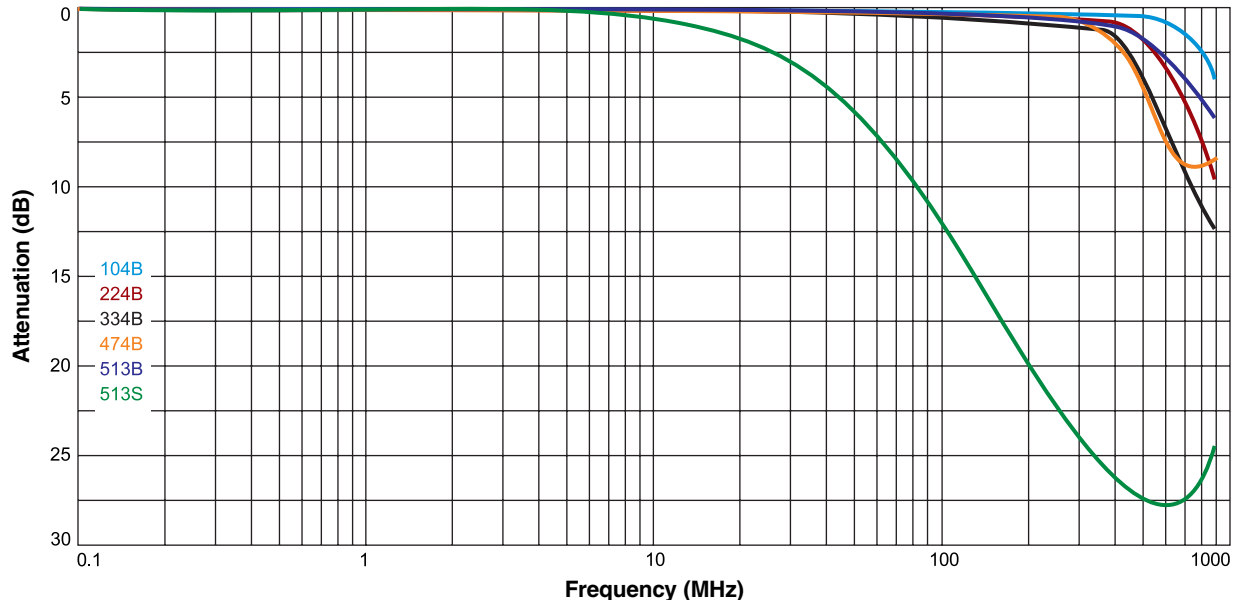




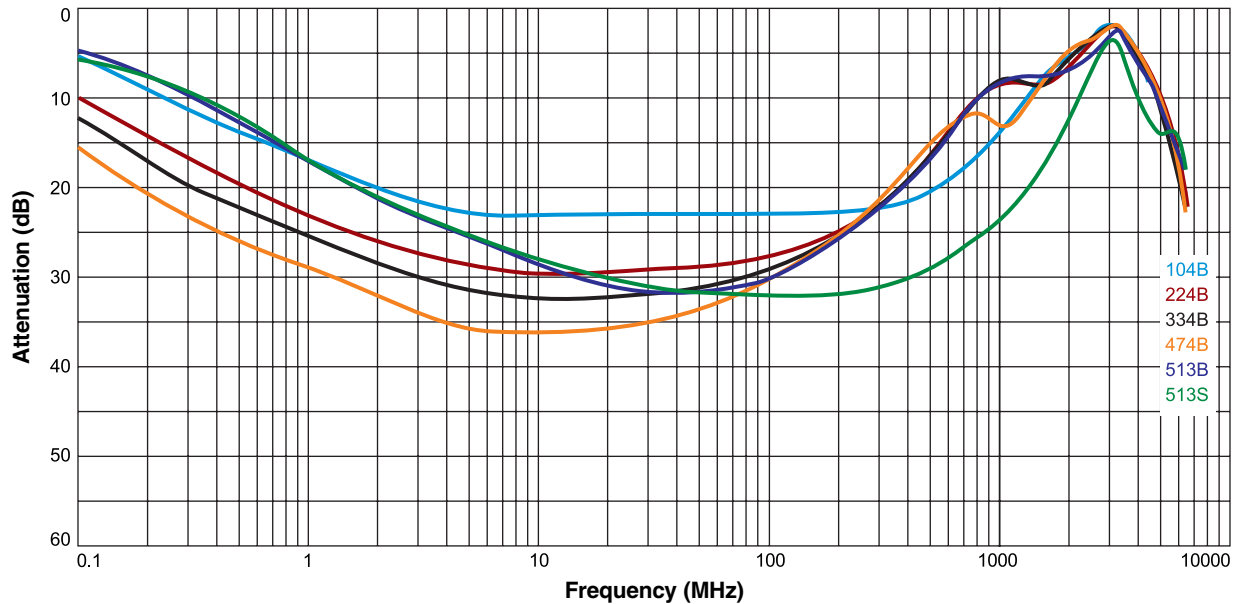
SMT Data Line EMI Filters – DFT4532

Attenuation vs Frequency

Differential Mode



Common Mode



US +1-847-639-6400 sales@coilcraft.com
UK +44-1236-730595 sales@coilcraft-europe.com
Taiwan +886-2-2264 3646 sales@coilcraft.com.tw
China +86-21-6218 8074 sales@coilcraft.com.cn
Singapore + 65-6484 8412 sales@coilcraft.com.sg

Document 1495-2 11/18/21

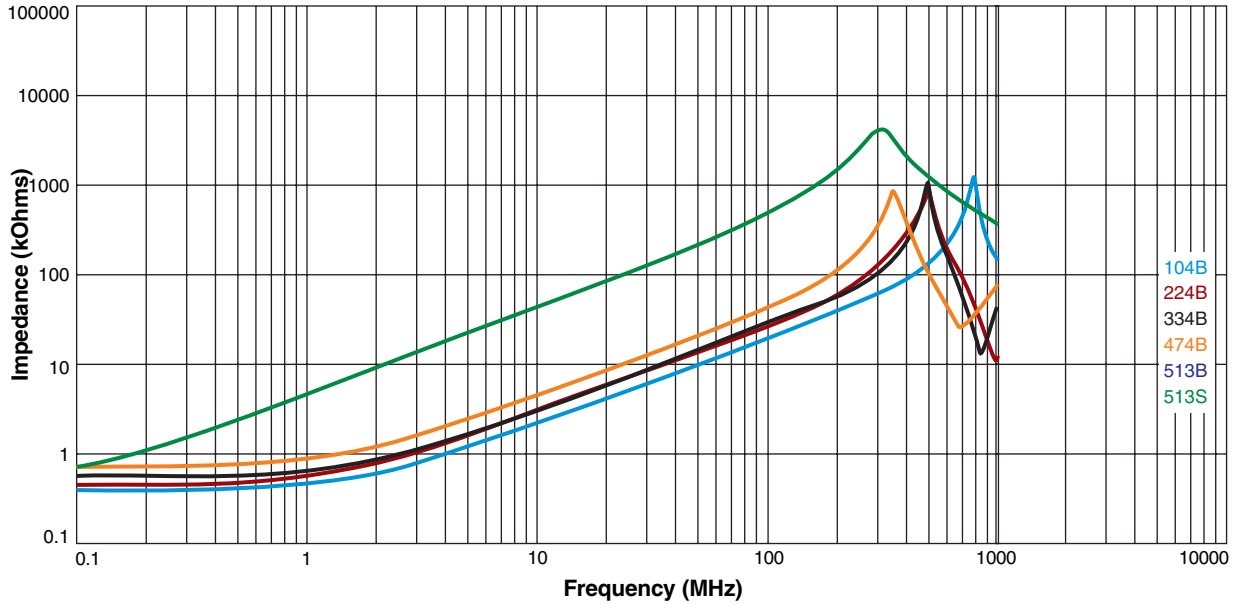
© Coilcraft Inc. 2021
 This product may not be used in medical or high risk applications without prior Coilcraft approval. Specification subject to change without notice. Please check web site for latest information.



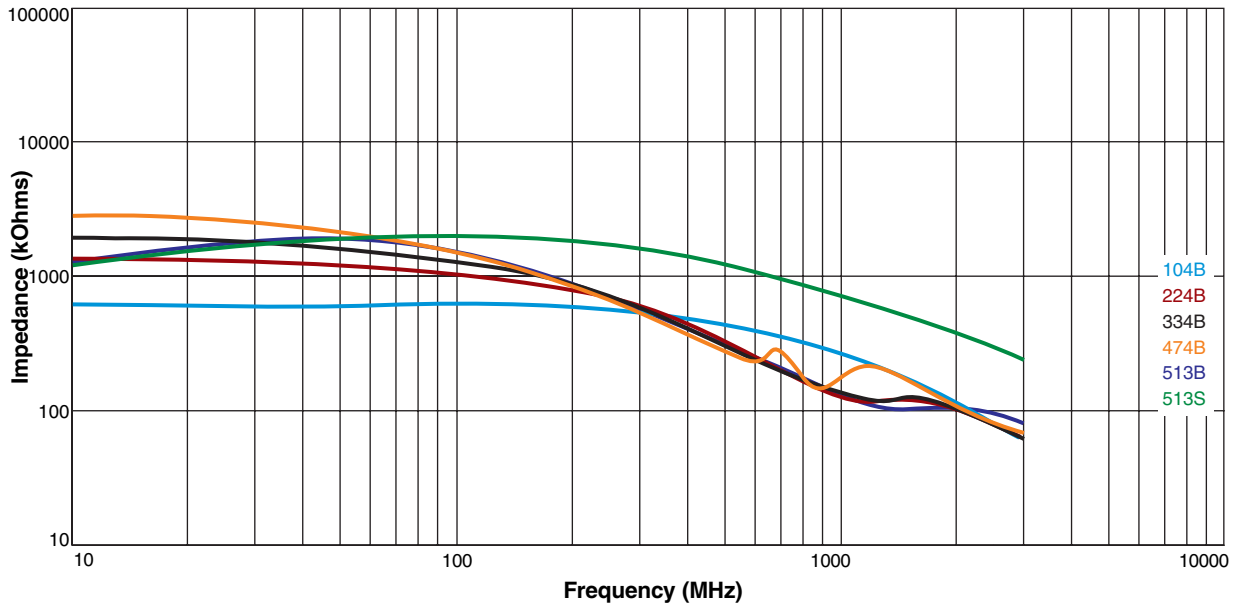
SMT Data Line EMI Filters – DFT4532

Impedance vs Frequency

Differential Mode



Common Mode



X-ON Electronics

Largest Supplier of Electrical and Electronic Components

Click to view similar products for [Common Mode Chokes / Filters](#) category:

Click to view products by [Coilcraft](#) manufacturer:

Other Similar products are found below :

[74279408](#) [PE-62911NL](#) [PE-64683](#) [ST6118T-R](#) [T8114NLT](#) [RD5122-10-6M0](#) [TCM0806G-350-2P-T](#) [TCM0806G-650-2P-T](#) [IND-0110](#)
[UAL21V07012500](#) [UAL21VR0802000](#) [UAL24VR06500CH](#) [UALSC023000000](#) [UALSC1020JH000](#) [UALSC1520JH000](#)
[UALSU16VD30030](#) [UALSU16VD40010](#) [UALSU9H0305000](#) [UALSU9HF060300](#) [UALSU9VD070100](#) [36-00037](#) [5701610000](#)
[UALW21HS072450](#) [UALSU9VD070400](#) [UALSU9HF050500](#) [UALSU9H0208000](#) [UALSCF25081300](#) [UAL24VK06450CH](#)
[PLT10HH501100PNB](#) [PLT10HH401100PNB](#) [PLT10HH1026R0PNB](#) [PE-67531](#) [EXC-X4CH120X](#) [TLH10UB 113 0R5](#) [2752041447](#)
[2752045447](#) [CMS3-11-R](#) [7351V](#) [CMF16-153131](#) [744252510](#) [T8116NLT](#) [FE2X10-4-2NL](#) [744253200](#) [744253101](#) [744252220](#) [TX8111NLT](#)
[UAL30VR3500470](#) [CTX01-19077-R](#) [T8003NLT](#) [CTX01-13663](#)