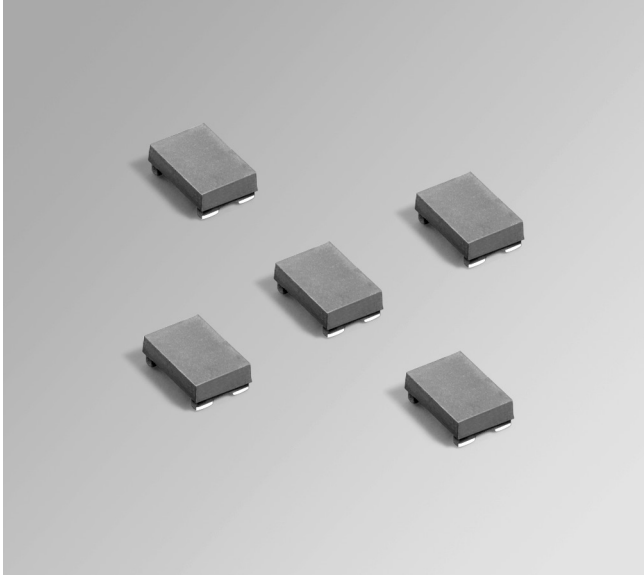


**NEW!**

Coupled Chip Inductors – PFD3215

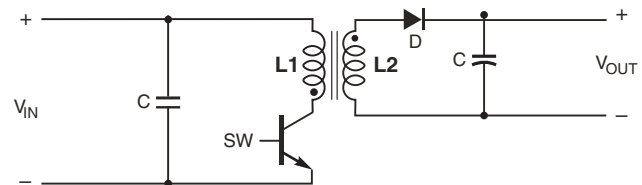
For Flyback, SEPIC and other applications



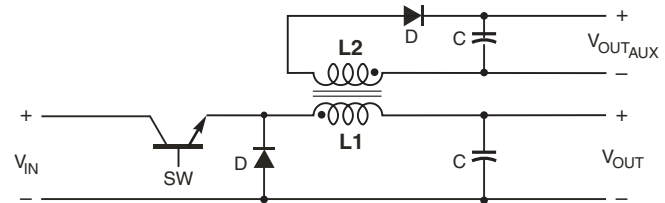
The PFD3215 has a footprint less than 3.2×2.3 mm, making this shielded coupled inductor ideal for applications with limited board space. It is designed for use in a variety of circuits including flyback, multi-output buck and SEPIC.

These inductors provide high efficiency and excellent current handling in a rugged, low cost part.

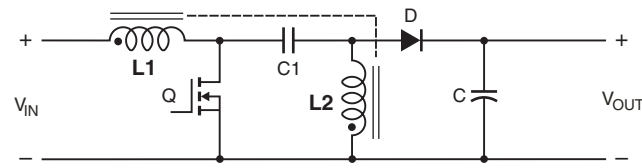
They can also be used as two single inductors connected in series or parallel, as a wideband transformers or as a common mode choke.



Typical Flyback Converter

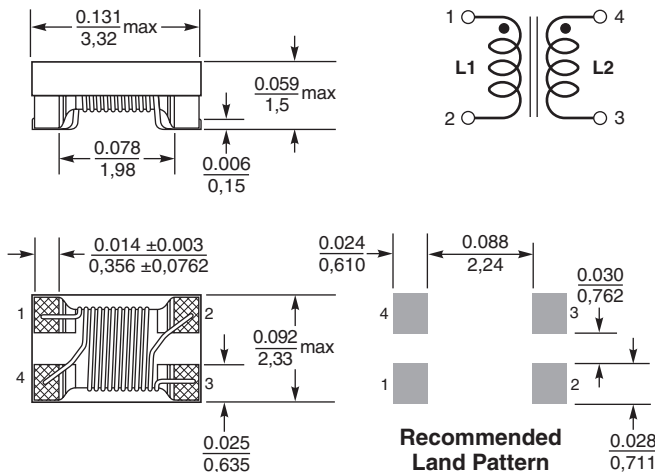


Typical Buck Converter with auxiliary output



Typical SEPIC schematic

Refer to Application Note, Document 639, "Selecting Coupled Inductors for SEPIC Applications"



Core material Ferrite

Environmental RoHS compliant, halogen free

Weight 18 – 28 mg

Terminations RoHS compliant silver-palladium-platinum-glass frit.

Ambient temperature -40°C to $+85^{\circ}\text{C}$ with Irms current, $+85^{\circ}\text{C}$ to $+125^{\circ}\text{C}$ with derated current

Storage temperature Component: -40°C to $+125^{\circ}\text{C}$.

Tape and reel packaging: -40°C to $+80^{\circ}\text{C}$

Winding to winding isolation 250 Vrms, one minute

Resistance to soldering heat Max three 40 second reflows at $+260^{\circ}\text{C}$, parts cooled to room temperature between cycles

Moisture Sensitivity Level (MSL) 1 (unlimited floor life at $<30^{\circ}\text{C}$ / 85% relative humidity)

Failures in Time (FIT) / Mean Time Between Failures (MTBF)

38 per billion hours / 26,315,789 hours, calculated per Telcordia SR-332

Packaging 1000/7" reel Plastic tape: 8 mm wide, 0.20 mm thick, 4 mm pocket spacing, 1.21 mm pocket depth

PCB washing Tested with pure water or alcohol only. For other solvents, see Doc787_PCB_Washing.pdf



www.coilcraft.com

US +1-847-639-6400 sales@coilcraft.com

UK +44-1236-730595 sales@coilcraft-europe.com

Taiwan +886-2-2264 3646 sales@coilcraft.com.tw

China +86-21-6218 8074 sales@coilcraft.com.cn

Singapore + 65-6484 8412 sales@coilcraft.com.sg

Document 982F-1 Revised 12/05/12

© Coilcraft Inc. 2013

This product may not be used in medical or high risk applications without prior Coilcraft approval. Specification subject to change without notice. Please check web site for latest information.


NEW!

PFD3215 Coupled Inductors for SEPIC applications

Part number ¹	Inductance ² ±20% (µH)	DCR max ³ (Ohms)	SRF typ ⁴ (MHz)	Coupling coefficient typ	Leakage inductance ⁵ typ (µH)	Isat (A) ⁶			Irms (A)	
						10% drop	20% drop	30% drop	both windings ⁷	one winding ⁸
PFD3215-391ME_	0.39	0.070	600	0.89	0.08	2.10	2.30	2.40	0.98	1.39
PFD3215-102ME_	1.0	0.123	400	0.95	0.09	1.35	1.55	1.65	0.85	1.20
PFD3215-182ME_	1.8	0.250	230	0.97	0.11	1.00	1.20	1.30	0.60	0.85
PFD3215-222ME_	2.2	0.265	270	0.97	0.13	0.95	1.05	1.15	0.57	0.81
PFD3215-332ME_	3.3	0.360	190	0.98	0.14	0.75	0.83	0.90	0.55	0.78
PFD3215-472ME_	4.7	0.450	175	0.98	0.17	0.65	0.75	0.80	0.51	0.72
PFD3215-682ME_	6.8	0.630	155	0.98	0.25	0.55	0.65	0.70	0.40	0.57
PFD3215-103ME_	10	1.25	110	0.98	0.31	0.45	0.50	0.55	0.27	0.38

1. When ordering, please specify **packaging** code:

PFD3215-103MEC

Packaging: **C** = 7" machine-ready reel. EIA-481 embossed plastic tape (1000 parts per full reel).

B = Less than full reel. In tape, but not machine ready. To have a leader and trailer added (\$25 charge), use code letter C instead.

D = 13" machine-ready reel. EIA-481 embossed plastic tape. Factory order only, not stocked (3500 parts per full reel).

- Inductance shown for each winding, measured at 100 kHz, 0.1 Vrms, 0 Adc on an Agilent/HP 4284A LCR meter or equivalent. When leads are connected in parallel, inductance is the same value. When leads are connected in series, inductance is four times the value.
- DCR is for each winding. When leads are connected in parallel, DCR is half the value. When leads are connected in series, DCR is twice the value.
- SRF measured using an Agilent/HP 4191A or equivalent. When leads are connected in parallel, SRF is the same value.
- Leakage inductance is for the primary winding with the secondary windings shorted.
- DC current, at which the inductance drops the specified amount from its value without current. It is the current flowing in one winding.
- Equal current when applied to each winding simultaneously that causes a 40°C temperature rise from 25°C ambient. See temperature rise calculation.
- Maximum current when applied to one winding that causes a 40°C temperature rise from 25°C ambient. See temperature rise calculation.
- Electrical specifications at 25°C.

Refer to Doc 639 "Selecting Coupled Inductors for SEPIC Applications."

Refer to Doc 362 "Soldering Surface Mount Components" before soldering.

Temperature rise calculation based on specified Irms

Winding power loss = $(I_{L1}^2 + I_{L2}^2) \times \text{DCR}$ in Watts (W)

Temperature rise = Winding power loss $\times \frac{222^\circ\text{C}}{\text{W}}$

Examples for PFD3215-182ML:

Equal current in each winding (0.60 A):

Winding power loss = $(0.60^2 + 0.60^2) \times 0.250 = 0.18 \text{ W}$

Temperature rise = $0.18 \text{ W} \times \frac{222^\circ\text{C}}{\text{W}} = 39.9^\circ\text{C}$

Unequal current ($I_{L1} = 0.75 \text{ A}$, $I_{L2} = 0.35 \text{ A}$):

Winding power loss = $(0.75^2 + 0.35^2) \times 0.250 = 0.171 \text{ W}$

Temperature rise = $0.171 \text{ W} \times \frac{222^\circ\text{C}}{\text{W}} = 38.0^\circ\text{C}$

PFD3215 Coupled Inductors for Flyback applications

Part number ¹	Inductance at 0 A ² ±20% (µH)	Inductance at Ipk A ³ ±20% (µH)	DCR max (Ohms)	Leakage inductance ⁴ typ (µH)	Turns ratio	Ipk ³ (A)
PFD3215-391ME_	0.39	0.27	0.070	0.08	1 : 1	2.40
PFD3215-102ME_	1.0	0.70	0.123	0.09	1 : 1	1.65
PFD3215-182ME_	1.8	1.26	0.250	0.11	1 : 1	1.30
PFD3215-222ME_	2.2	1.54	0.265	0.13	1 : 1	1.15
PFD3215-332ME_	3.3	2.31	0.335	0.14	1 : 1	0.90
PFD3215-472ME_	4.7	3.29	0.442	0.17	1 : 1	0.80
PFD3215-682ME_	6.8	4.76	0.600	0.25	1 : 1	0.70
PFD3215-103ME_	10	7.00	1.22	0.31	1 : 1	0.55

1. When ordering, please specify **packaging** code:

PFD3215-103MEC

Packaging: **C** = 7" machine-ready reel. EIA-481 embossed plastic tape (1000 parts per full reel).

B = Less than full reel. In tape, but not machine ready. To have a leader and trailer added (\$25 charge), use code letter D instead.

D = 13" machine-ready reel. EIA-481 embossed plastic tape. Factory order only, not stocked (3500 parts per full reel).

2. Inductance is for the primary, measured at 100 kHz, 0.1 Vrms, 0 Adc on an Agilent/HP 4284A LCR meter or equivalent.

3. Peak primary current drawn at minimum input voltage.

4. Leakage inductance is for the primary winding with the secondary windings shorted.

5. Electrical specifications at 25°C.

Refer to Doc 362 "Soldering Surface Mount Components" before soldering.



www.coilcraft.com

US +1-847-639-6400 sales@coilcraft.com

UK +44-1236-730595 sales@coilcraft-europe.com

Taiwan +886-2-2264 3646 sales@coilcraft.com.tw

China +86-21-6218 8074 sales@coilcraft.com.cn

Singapore +65-6484 8412 sales@coilcraft.com.sg

Document 982F-2 Revised 12/05/12

© Coilcraft Inc. 2013

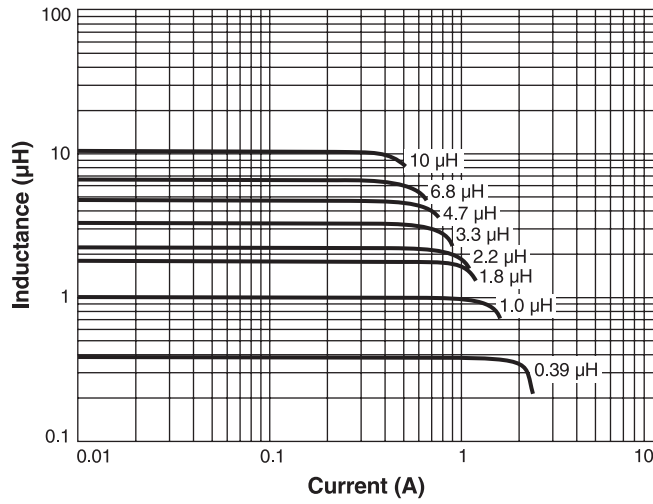
This product may not be used in medical or high risk applications without prior Coilcraft approval. Specification subject to change without notice. Please check web site for latest information.

NEW!

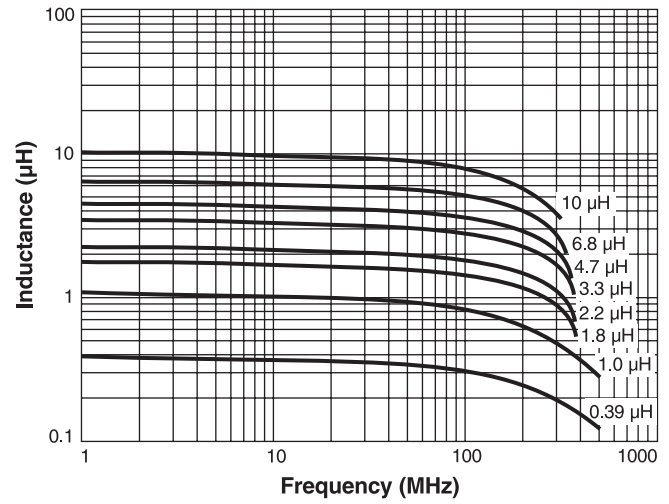


PFD3215 Coupled Inductors for Flyback, SEPIC and other applications

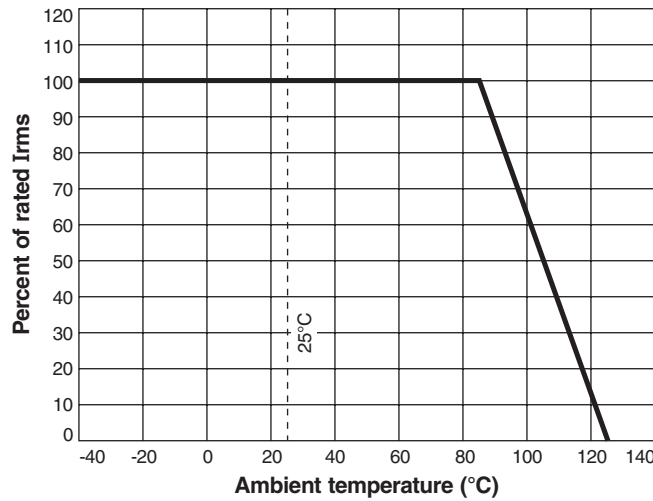
L vs Current



L vs Frequency



Typical Current Derating



X-ON Electronics

Largest Supplier of Electrical and Electronic Components

Click to view similar products for [Coupled Inductors](#) category:

Click to view products by [Coilcraft](#) manufacturer:

Other Similar products are found below :

[NIN-HCR27JTRF](#) [744874470](#) [CL0608-2-100TR-R](#) [CTX20-1A-R](#) [SDQ25-470-R](#) [B82477D4223M](#) [IHLD3232HBER5R0M5A](#) [CTX8-1-R](#)
[HM78D-755470MLFTR](#) [P0175NL](#) [FPT705-150-R](#) [HM78D-1288R2MLFTR](#) [SRF1280-1R5Y](#) [DRQ125-102-R](#) [48100C](#) [CTX16-18405-R](#)
[74485542820](#) [DRQ125-820-R](#) [74485542680](#) [CTX68-4A-R](#) [CTX50-3P-R](#) [DRQ127-R47-R](#) [CTX15-2P-R](#) [HM78D-755220MLFTR](#) [HA78D-](#)
[1284R7MLFTR](#) [CTX16-17769-R](#) [CTX150-4A-R](#) [74485540820](#) [74485542101](#) [7448841022](#) [7448841010](#) [7448841220](#) [7448841470](#)
[7448841150](#) [7448841100](#) [7448841068](#) [CL1108-4-50TR-R](#) [CL-12-24](#) [SRF1280-R47Y](#) [CL-50-100](#) [74485540101](#) [7023](#) [PM3602-10-RC](#)
[PM3602-100-RC](#) [PM3602-150-RC](#) [PM3602-15-RC](#) [PM3602-5-RC](#) [PM3602-200-RC](#) [PM3602-20-RC](#) [PM3602-250-RC](#)