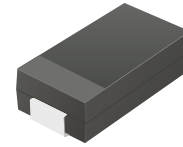


ACDBA360-HF

Reverse Voltage: 60 Volts
Forward Current: 3.0 Amp
RoHS Device
Halogen free

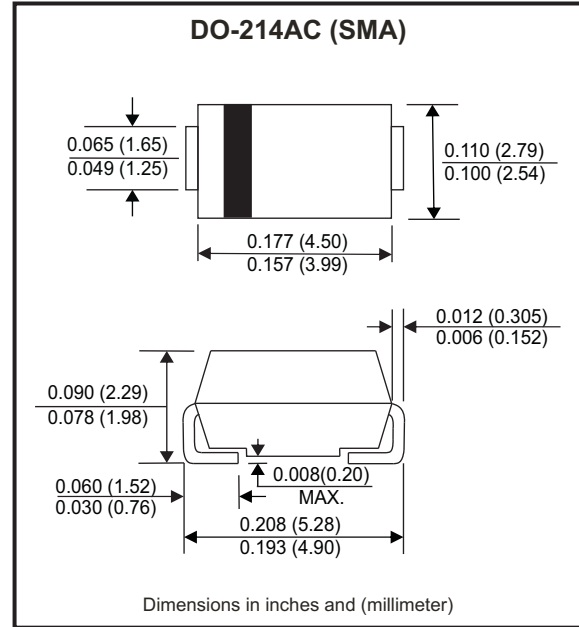


Features

- High current capability.
- High surge capability.
- Low reverse current.
- Comply with AEC-Q101

Mechanical data

- Case: DO-214AC / SMA, molded plastic.
- Epoxy: UL flammability classification rate 94V-0 .
- Terminals: Lead free plating (Tin finish).
Solderable per MIL-STD-202, Method 208.
- Polarity: Cathode band.
- Weight: 0.062 grams(approx.).



Circuit Diagram



Maximum Ratings (at $T_A=25^{\circ}\text{C}$ unless otherwise noted)

| Parameter | Conditions | Symbol | Min | Typ | Max | Unit |
|-----------------------------------|---|-----------|-----|-----|------|--------------------|
| Repetitive peak reverse voltage | | V_{RRM} | | | 60 | V |
| RMS voltage | | V_{RMS} | | | 42 | V |
| DC blocking voltage | | V_{DC} | | | 60 | V |
| Average forward rectified current | | I_F | | | 3 | A |
| Peak forward surge current | 8.3ms single half sine-wave superimposed on rated load (JEDEC method) | I_{FSM} | | | 80 | A |
| Operating temperature range | | T_J | -55 | | +125 | $^{\circ}\text{C}$ |
| Storage temperature range | | T_{STG} | -55 | | +150 | $^{\circ}\text{C}$ |

Electrical Characteristics (at $T_A=25^{\circ}\text{C}$ unless otherwise noted)

| Parameter | Conditions | Symbol | Min | Typ | Max | Unit |
|----------------------|--|-----------------|-----|-----|------|----------------------|
| Forward voltage | $I_F = 3\text{A}$ | V_F | | | 0.70 | V |
| Reverse current | $V_R = V_{RRM}, T_A = 25^{\circ}\text{C}$ | I_R | | | 0.5 | mA |
| | $V_R = V_{RRM}, T_A = 100^{\circ}\text{C}$ | I_R | | | 10 | mA |
| Junction capacitance | f=1MHz and applied 4V DC reverse Voltage | C_J | | 150 | | pF |
| Thermal resistance | Junction to case | $R_{\theta jc}$ | | 25 | | $^{\circ}\text{C/W}$ |

Note: 1. Measured at 1.0MHZ and applied reverse voltage of 4.0V DC.

Company reserves the right to improve product design , functions and reliability without notice.

REV: A

RATING AND CHARACTERISTIC CURVES (ACDBA360-HF)

Fig.1 - Typical Forward Current Derating Curve

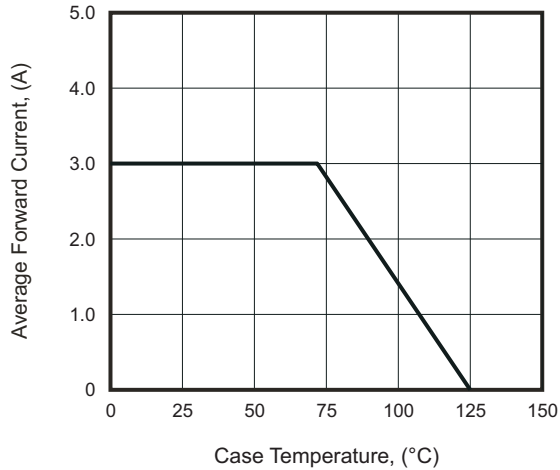


Fig.2 - Typical Forward Characteristics

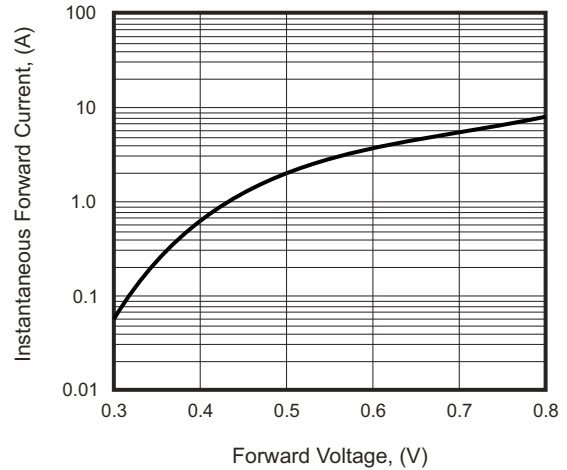


Fig.3 - Maximum Non-Repetitive Forward Surge Current

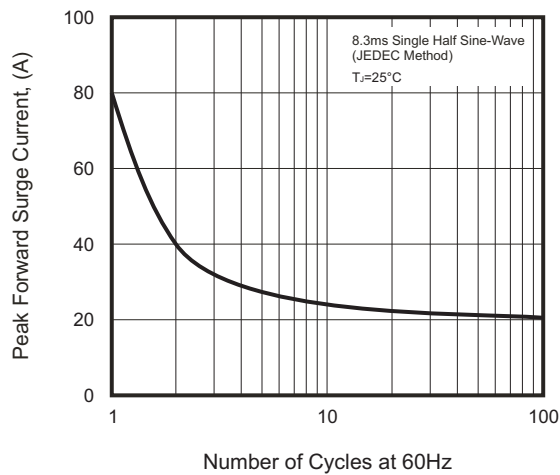


Fig.4 - Typical Reverse Characteristics

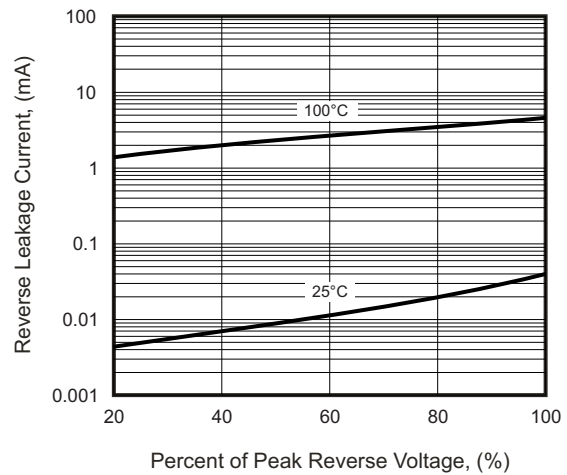
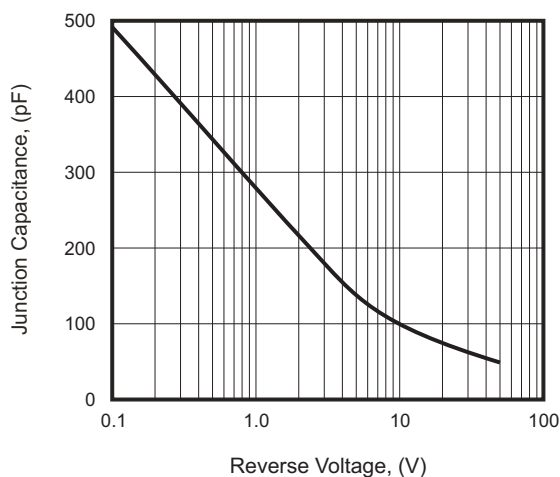


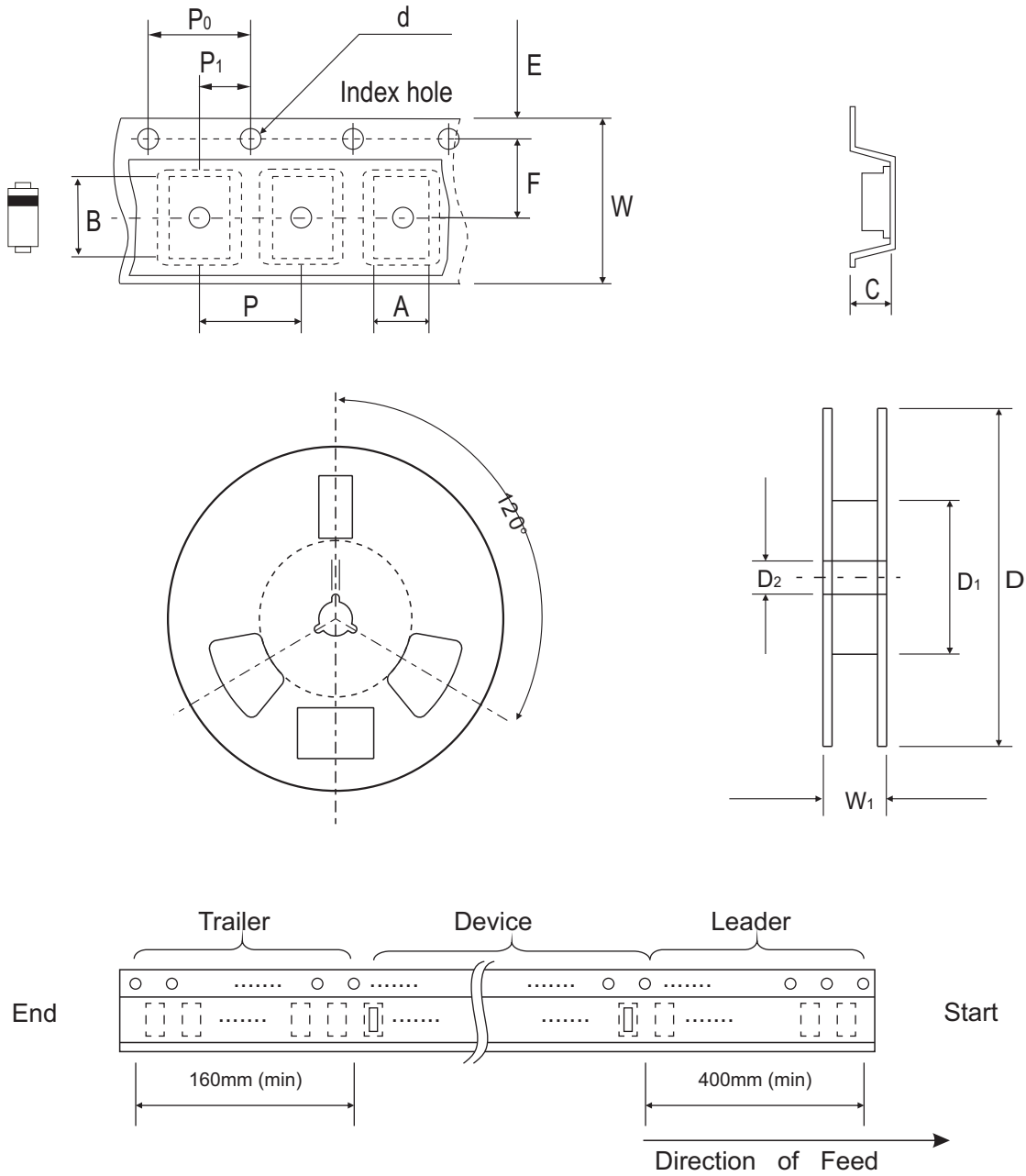
Fig.5 - Typical Junction Capacitance



Company reserves the right to improve product design, functions and reliability without notice.

REV: A

Reel Taping Specification



| DO-214AC (SMA) | SYMBOL | A | B | C | d | D | D ₁ | D ₂ |
|-------------------|--------|------------|------------|------------|---------------|---------------|----------------|----------------|
| | (mm) | 2.90 MAX. | 5.90 MAX. | 2.66 MAX. | 1.50 ± 0.10 | 330 ± 2.00 | 50 MIN. | 13.50 ± 1.00 |
| | (inch) | 0.114 MAX. | 0.232 MAX. | 0.105 MAX. | 0.059 ± 0.004 | 13.00 ± 0.079 | 1.969 MIN. | 0.531 ± 0.039 |

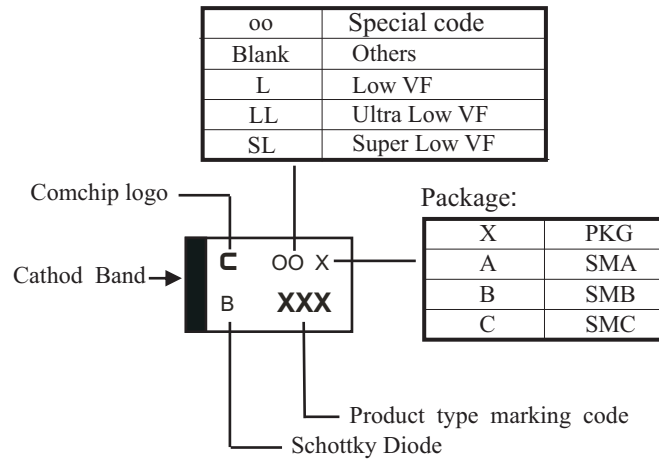
| DO-214AC (SMA) | SYMBOL | E | F | P | P ₀ | P ₁ | W | W ₁ |
|-------------------|--------|---------------|---------------|---------------|----------------|----------------|---------------|----------------|
| | (mm) | 1.75 ± 0.10 | 5.50 ± 0.05 | 4.00 ± 0.10 | 4.00 ± 0.10 | 2.00 ± 0.05 | 12.00 ± 0.30 | 18.40 MAX. |
| | (inch) | 0.069 ± 0.004 | 0.217 ± 0.002 | 0.157 ± 0.004 | 0.157 ± 0.004 | 0.079 ± 0.002 | 0.472 ± 0.012 | 0.724 MAX. |

Company reserves the right to improve product design, functions and reliability without notice.

REV: A

Marking Code

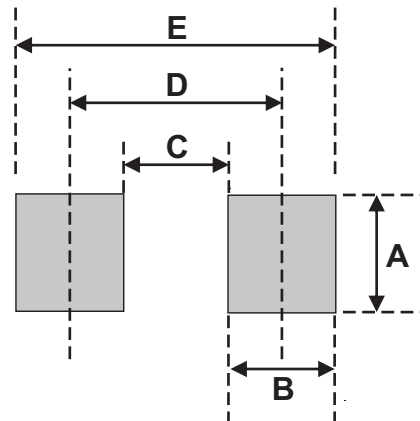
| Part Number | Marking Code |
|-------------|--------------|
| ACDBA360-HF | 360 |



xxx = Product type marking code

Suggested PAD Layout

| SIZE | DO-214AC (SMA) | |
|------|----------------|--------|
| | (mm) | (inch) |
| A | 1.70 | 0.067 |
| B | 2.50 | 0.098 |
| C | 1.50 | 0.059 |
| D | 4.00 | 0.157 |
| E | 6.50 | 0.256 |



Note:

1. The pad layout is for reference purposes only.

Standard Packaging

| Case Type | REEL PACK | |
|----------------|--------------|------------------|
| | REEL (pcs) | Reel Size (inch) |
| DO-214AC (SMA) | 5,000 | 13 |

X-ON Electronics

Largest Supplier of Electrical and Electronic Components

Click to view similar products for [Schottky Diodes & Rectifiers](#) category:

Click to view products by [Comchip](#) manufacturer:

Other Similar products are found below :

[MA4E2039](#) [MMBD301M3T5G](#) [RB160M-50TR](#) [D83C](#) [BAS16E6433HTMA1](#) [BAS 3010S-02LRH E6327](#) [BAT 54-02LRH E6327](#)
[NRVBAF360T3G](#) [NSR05F40QNXT5G](#) [NTE555](#) [JANS1N6640](#) [SS3003CH-TL-E](#) [GA01SHT18](#) [CRS10I30A\(TE85L,QM](#) [MBRA140TRPBF](#)
[MBRB30H30CT-1G](#) [BAT 15-04R E6152](#) [JANTX1N5712-1](#) [DMJ3940-000](#) [SB007-03C-TB-E](#) [NRVBB20100CTT4G](#) [NRVBM120LT1G](#)
[NTSB30U100CT-1G](#) [CRG04\(T5L,TEMQ\)](#) [ACDBA1100LR-HF](#) [ACDBA1200-HF](#) [ACDBA240-HF](#) [ACDBA3100-HF](#) [CDBQC0530L-HF](#)
[ACDBA260LR-HF](#) [ACDBA1100-HF](#) [10BQ015-M3/5BT](#) [NRVBM120ET1G](#) [VSSB410S-M3/5BT](#) [1N5819T-G](#) [PDS1040Q-13](#) [B160BQ-13-F](#)
[SDM05U20CSP-7](#) [BAS 70-07 E6433](#) [B140S1F-7](#) [HSM560Je3/TR13](#) [DDB2265-000](#) [ZHCS506QTA](#) [HSM190Je3/TR13](#) [B330AF-13](#)
[ACDBUC0230-HF](#) [SDM1U100S1F-7](#) [MBR10200CTF-G1](#) [CDLL5712](#) [DMF2822-000](#)