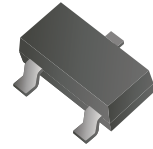


CDSH3-222N-G/222P-G

Reverse Voltage: 80 Volts
Power Dissipation: 150 mW
RoHS Device



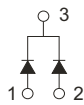
Features

- Design for mounting on small surface.
- High speed switching.
- High mounting capability, strong surge withstand, high reliability.

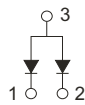
Mechanical data

- Case: SOT-523, molded plastic.
- Terminals: solderable per MIL-STD-750, method 2026.
- Approx. weight: 0.002 grams

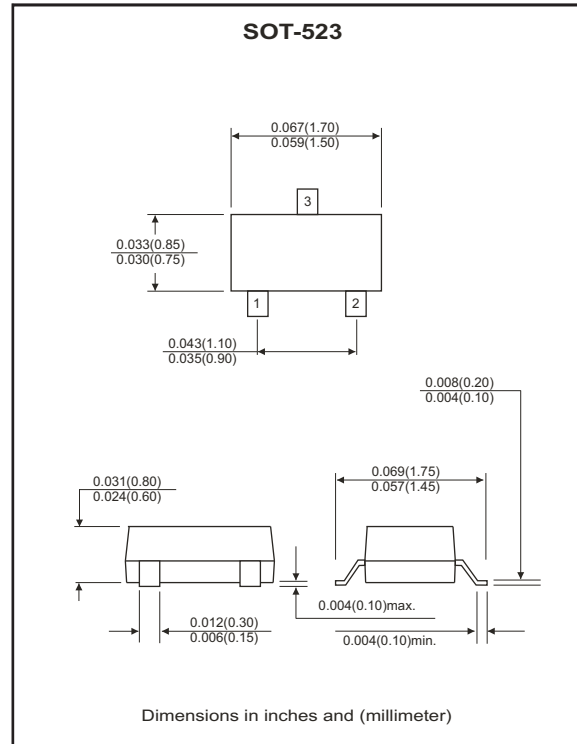
Circuit diagram



CDSH3-222N-G



CDSH3-222P-G



Maximum Ratings and Electrical Characteristics

(at Ta=25°C unless otherwise noted)

Parameter	Symbol	Conditions	Value	Units
Repetitive peak reverse voltage	V_{RRM}		80	V
Reverse voltage	V_R		80	V
Peak forward current	I_F		300	mA
Peak surge forward current	I_{FSM}	T=1.0 sec	4	A
Power dissipation	P_D		150	mW
Maximum forward voltage	V_F	@ $I_F=100mA$	1.2	V
Maximum reverse current	I_R	@ $V_R=70V$	0.1	μA
Maximum reverse recovery time	T_{rr}	$I_F=I_R=5mA, R_L=100\Omega$	4	nS
Maximum diode capacitance	C_J	$V_R=6V, f=1.0MHz$	3.5	pF
Maximum junction temperature	T_J		150	°C
Storage temperature	T_{STG}		-55 to +150	°C

RATING AND CHARACTERISTIC CURVES (CDSH3-222N-G/222P-G)

Fig.1 - Forward Characteristics (P type)

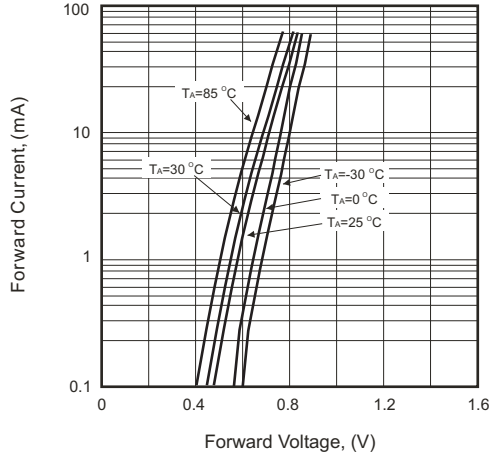


Fig.2 - Reverse Characteristics (P type)

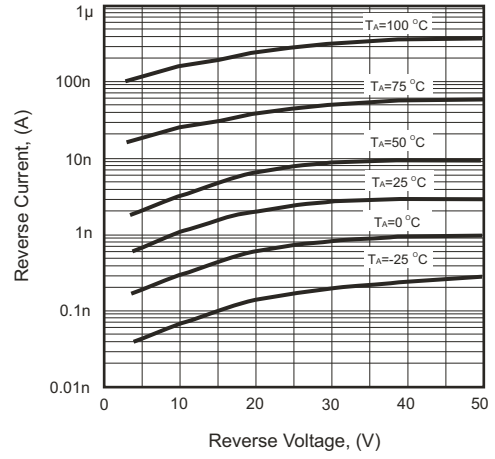


Fig.3 - Forward Characteristics (N type)

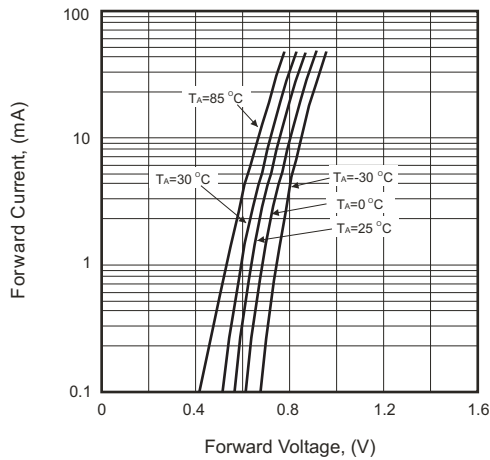


Fig.4 - Reverse Characteristics (N type)

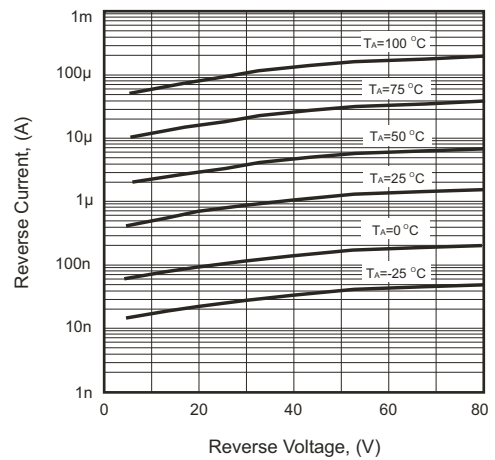


Fig.5 - Capacitance Between Terminals Characteristics

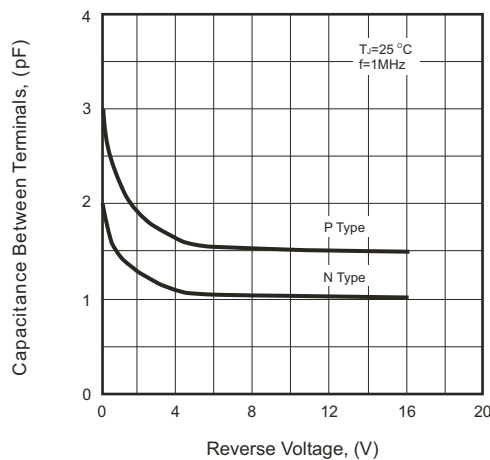
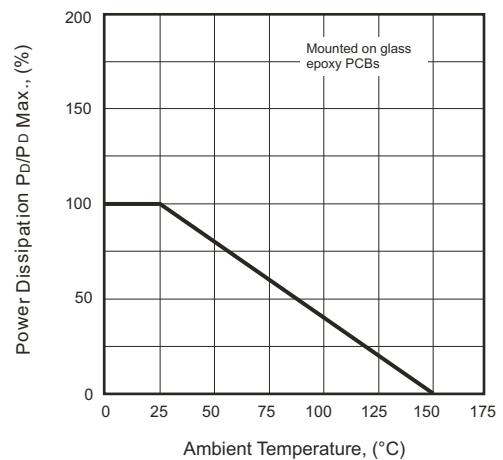


Fig.6 - Power Derating Curve



X-ON Electronics

Largest Supplier of Electrical and Electronic Components

Click to view similar products for [Diodes - General Purpose, Power, Switching category](#):

Click to view products by [Comchip manufacturer](#):

Other Similar products are found below :

[RD0306T-H](#) [BAV17-TR](#) [BAV19-TR](#) [1N3611](#) [NTE156A](#) [NTE525](#) [NTE571](#) [NTE574](#) [NTE5804](#) [NTE5806](#) [NTE6244](#) [1SS181-TP](#)
[1SS193,LF](#) [1SS400CST2RA](#) [SDAA13](#) [SHN2D02FUTW1T1G](#) [LS4151GS08](#) [1N4449](#) [1N456A](#) [1N4934-E3/73](#) [1N914B](#) [1N914BTR](#)
[RFUH20TB3S](#) [BAS 28 E6327](#) [BAV199-TP](#) [BAW56DWQ-7-F](#) [BAW75-TAP](#) [MM230L-CAA](#) [IDW40E65D1](#) [JAN1N3600](#) [LL4151-GS18](#)
[053684A](#) [SMMSD4148T3G](#) [707803H](#) [NSVDAN222T1G](#) [SP000010217](#) [CDSZC01100-HF](#) [BAV199E6433HTMA1](#) [BAV70M3T5G](#)
[SMBT2001T1G](#) [NTE5801](#) [NTE5800](#) [NTE5808](#) [NTE6240](#) [NTE6248](#) [DLM10C-AT1](#) [BAS28-7](#) [BAW56HDW-13](#) [BAS28 TR](#) [VS-](#)
[HFA04SD60STR-M3](#)