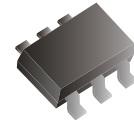


CDSV6-99SD-G

Reverse Voltage: 75 Volts
Forward Current: 215 mA
RoHS Device



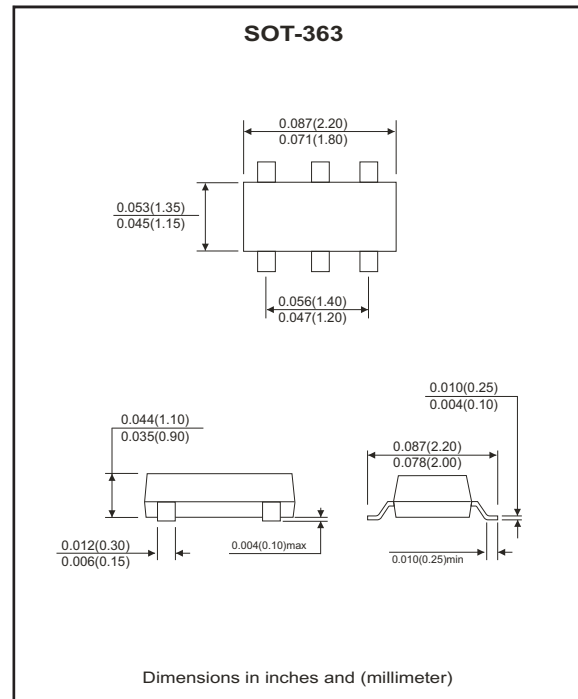
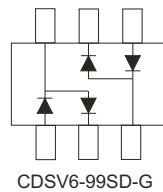
Features

- Design for mounting on small surface.
- High speed switching.
- Ultra small surface mount package.
- Two BAV99 circuits in one package.

Mechanical data

- Case: SOT-363, molded plastic.
- Terminals: solderable per MIL-STD-750, method 2026.
- Approx. weight: 0.006 grams

Circuit diagram



Maximum Ratings and Electrical Characteristics

(at Ta=25 °C unless otherwise noted)

Parameter	Symbol	Conditions	Value	Units
Repetitive peak reverse voltage	V _{RRM}		75	V
Reverse voltage	V _R		75	V
Forward current	I _F		215	mA
Peak surge forward current	I _{FSM}	T=1.0 μS	2	A
Power dissipation	P _D		200	mW
Maximum forward voltage	V _F	@I _F =1mA	0.715	V
		@I _F =10mA	0.855	
		@I _F =50mA	1.0	
		@I _F =100mA	1.25	
Maximum reverse current	I _R	@V _R =20V	0.025	μA
		@V _R =75V	2.5	
		@V _R =25V, T _J =150 °C	30	
		@V _R =75V, T _J =150 °C	50	
Maximum reverse recovery time	T _{rr}	I _F =I _R =10mA, R _L =100Ω	4	nS
Typical diode capacitance	C _T	V _R =0V, f=1.0MHz	2	pF
Maximum junction temperature	T _J		150	°C
Storage temperature	T _{STG}		-55 to +150	°C

RATING AND CHARACTERISTIC CURVES (CDSV6-99SD-G)

Fig.1 - Forward Characteristics

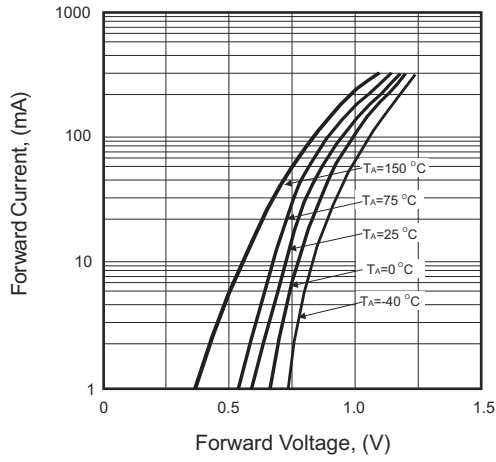


Fig.2 - Reverse Characteristics

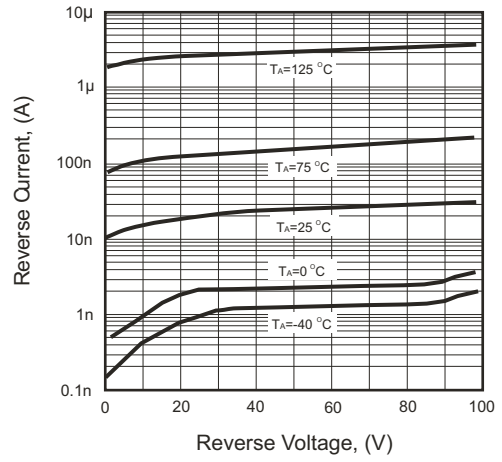


Fig.3 - Capacitance Between Terminals Characteristics

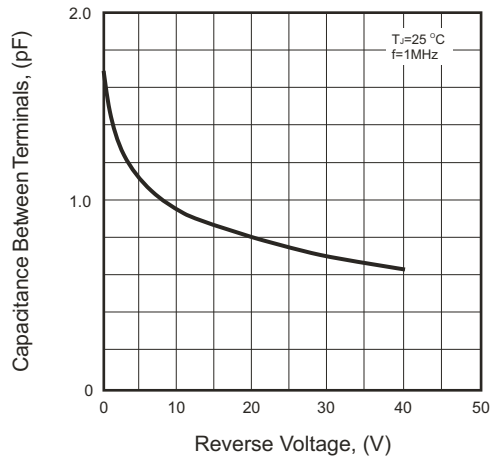
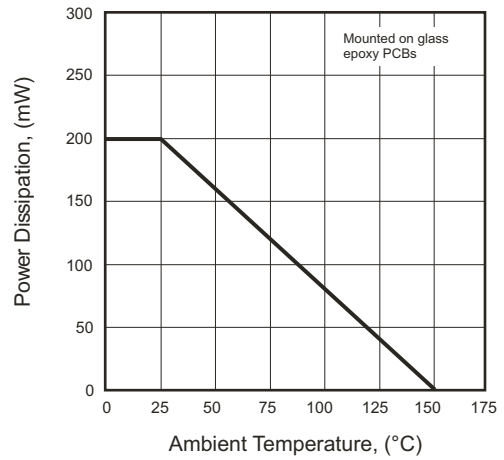


Fig.4 - Power Derating Curve



X-ON Electronics

Largest Supplier of Electrical and Electronic Components

Click to view similar products for [Diodes - General Purpose, Power, Switching category](#):

Click to view products by [Comchip manufacturer](#):

Other Similar products are found below :

[RD0306T-H](#) [BAV17-TR](#) [BAV19-TR](#) [1N3611](#) [NTE156A](#) [NTE525](#) [NTE571](#) [NTE574](#) [NTE5804](#) [NTE5806](#) [NTE6244](#) [1SS181-TP](#)
[1SS193,LF](#) [1SS400CST2RA](#) [SDAA13](#) [SHN2D02FUTW1T1G](#) [LS4151GS08](#) [1N4449](#) [1N456A](#) [1N4934-E3/73](#) [1N914B](#) [1N914BTR](#)
[RFUH20TB3S](#) [BAS 28 E6327](#) [BAV199-TP](#) [BAW56DWQ-7-F](#) [BAW75-TAP](#) [MM230L-CAA](#) [IDW40E65D1](#) [JAN1N3600](#) [LL4151-GS18](#)
[053684A](#) [SMMSD4148T3G](#) [707803H](#) [NSVDAN222T1G](#) [SP000010217](#) [CDSZC01100-HF](#) [BAV199E6433HTMA1](#) [BAV70M3T5G](#)
[SMBT2001T1G](#) [NTE5801](#) [NTE5800](#) [NTE5808](#) [NTE6240](#) [NTE6248](#) [DLM10C-AT1](#) [BAS28-7](#) [BAW56HDW-13](#) [BAS28 TR](#) [VS-](#)
[HFA04SD60STR-M3](#)