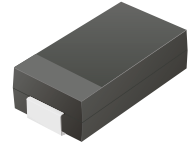


CGRC501-G Thru. CGRC507-G

Glass Passivated Type
Reverse Voltage: 50 to 1000 Volts
Forward Current: 5.0 Amp
RoHS Device

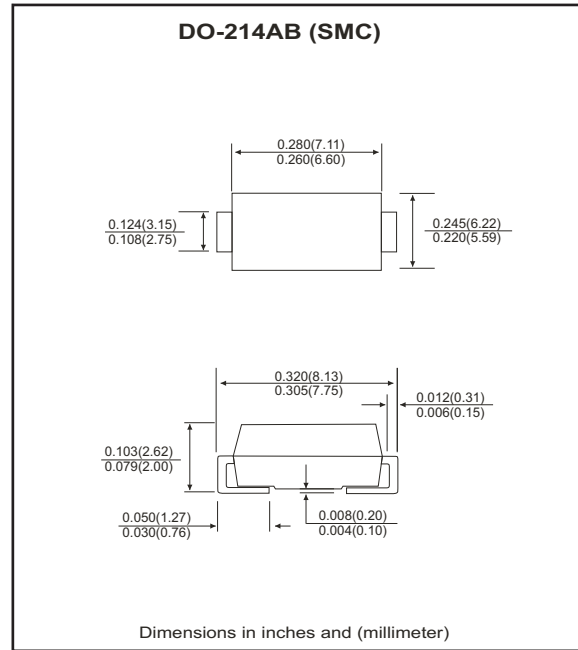


Features

- Ideal for surface mount applications.
- Easy pick and place.
- Plastic package has Underwriters Lab. flammability classification 94V-0.
- Built in strain relief.
- Low forward voltage drop.

Mechanical data

- Case: JEDEC DO-214AB, molded plastic.
- Terminals: solderable per MIL-STD-750, method 2026.
- Polarity: Color band denotes cathode end.
- Approx. weight: 0.21 grams



Maximum Ratings and Electrical Characteristics

| Parameter | Symbol | CGRC 501-G | CGRC 502-G | CGRC 503-G | CGRC 504-G | CGRC 505-G | CGRC 506-G | CGRC 507-G | Units |
|---|------------------|-------------|------------|------------|------------|------------|------------|------------|-------|
| Max. repetitive peak reverse voltage | V _{RRM} | 50 | 100 | 200 | 400 | 600 | 800 | 1000 | V |
| Max. DC blocking voltage | V _{DC} | 50 | 100 | 200 | 400 | 600 | 800 | 1000 | V |
| Max. RMS voltage | V _{RMS} | 35 | 70 | 140 | 280 | 420 | 560 | 700 | V |
| Peak surge forward current, 8.3ms single half sine-wave superimposed on rate load (JEDEC method) | I _{FSM} | 100 | | | | | | | A |
| Max. average forward current | I _o | 5.0 | | | | | | | A |
| Max. instantaneous forward voltage at 5.0A | V _F | 1.15 | | | | | | | V |
| Max. DC reverse current at T _A =25 °C rated DC blocking voltage T _A =125 °C | I _R | 10 250 | | | | | | | μA |
| Max. thermal resistance (Note 1) | R _{θJA} | 50 | | | | | | | °C/W |
| Max. operating junction temperature | T _J | 150 | | | | | | | °C |
| Storage temperature | T _{STG} | -55 to +150 | | | | | | | °C |

Notes: 1. Thermal resistance from junction to terminal mounted on P.C.B. with 5.0×5.0 mm square²(0.13mm thick) land area.

RATING AND CHARACTERISTIC CURVES (CGRC501-G thru CGRC507-G)

Fig.1 Reverse Characteristics

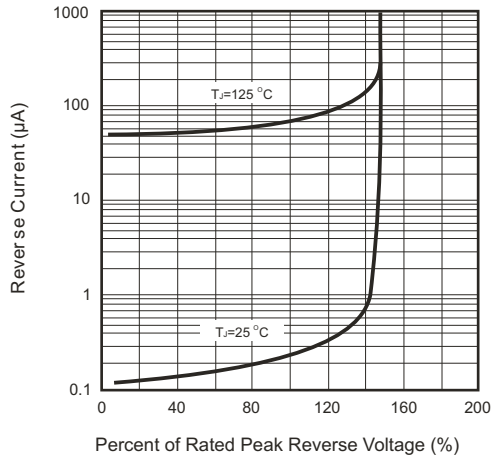


Fig.2 Forward Characteristics

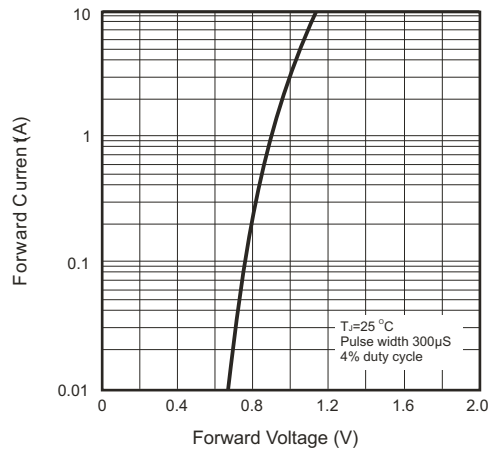


Fig.3 Non-repetitive Forward Surge Current

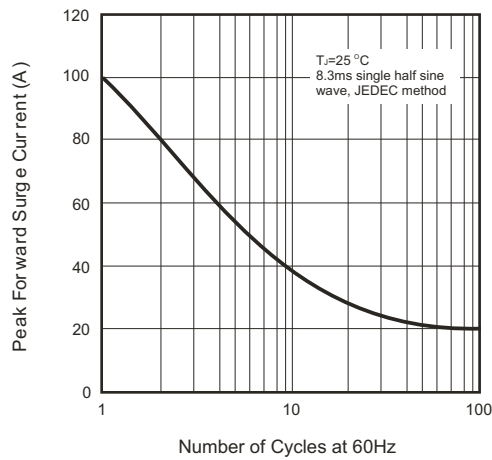
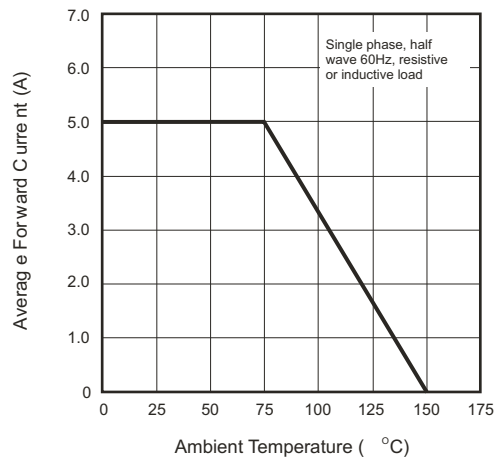


Fig.4 Current Derating Curve



X-ON Electronics

Largest Supplier of Electrical and Electronic Components

Click to view similar products for [Rectifiers](#) category:

Click to view products by [Comchip](#) manufacturer:

Other Similar products are found below :

[70HFR40](#) [RL252-TP](#) [150KR30A](#) [1N5397](#) [NTE5841](#) [NTE6038](#) [SCF5000](#) [1N4002G](#) [1N4005-TR](#) [JANS1N6640US](#) [481235F](#)
[RRE02VS6SGTR](#) [067907F](#) [MS306](#) [70HF40](#) [T110HF60](#) [T85HFL60S02](#) [US2JFL-TP](#) [A1N5404G-G](#) [CRS04\(T5L,TEMQ\)](#) [ACGRA4007-HF](#)
[ACGRB207-HF](#) [CLH03\(TE16L,Q\)](#) [ACGRC307-HF](#) [ACEFC304-HF](#) [NTE6356](#) [NTE6359](#) [NTE6002](#) [NTE6023](#) [NTE6039](#) [NTE6077](#)
[85HFR60](#) [40HFR60](#) [1N1186RA](#) [70HF120](#) [85HFR80](#) [D126A45C](#) [SCF7500](#) [D251N08B](#) [SCHJ22.5K](#) [SM100](#) [SCPA2](#) [SCH10000](#) [SDHD5K](#)
[VS-12FL100S10](#) [ACGRA4001-HF](#) [D1821SH45T PR](#) [D1251S45T](#) [NTE5990](#) [NTE6358](#)