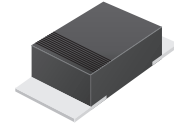


## CURM103-G Thru. CURM107-G

Reverse Voltage: 200 - 1000 Volts

Forward Current: 1.0 Amp

RoHS Device

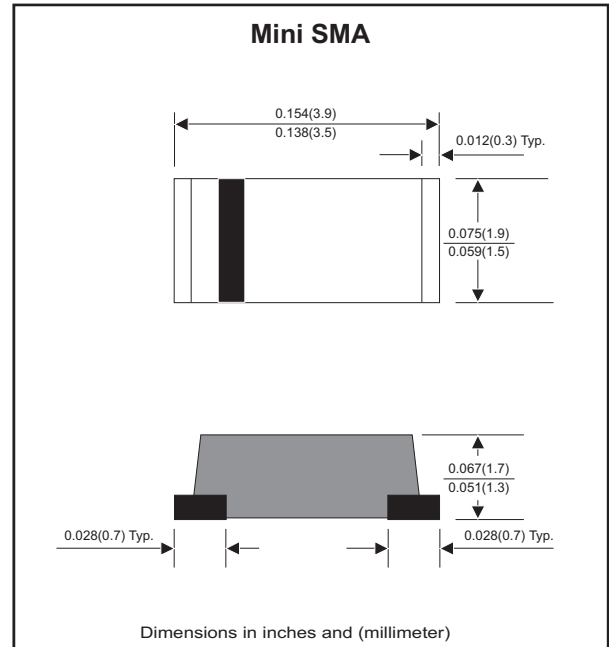


### Features

- Ideal for surface mount applications
- Easy pick and place
- Plastic package has Underwriters Lab. flammability classification 94V-0
- Exceeds environmental standard MIL-S-19500/228
- Low leakage current

### Mechanical data

- Case: Mini SMA/SOD-123 molded plastic
- Terminals: solderable per MIL-STD-750, method 2026
- Polarity: Indicated by cathode band
- Mounting position: Any
- Approx. Weight: 0.04 grams



### Maximum Ratings and Electrical Characteristics

Parameter	Symbol	CURM 103-G	CURM 104-G	CURM 107-G	Unit
Repetitive Peak Reverse Voltage	V <sub>RRM</sub>	200	400	1000	V
Continuous reverse voltage	V <sub>R</sub>	200	400	1000	V
RMS Voltage	V <sub>RMS</sub>	140	280	700	V
Max. Forward Surge Current 8.3ms single half sine-wave superimposed on rate load ( JEDEC method )	I <sub>FSM</sub>	30			A
Max. Forward rectified Current	I <sub>o</sub>	1.0			A
Max. Forward voltage at I <sub>F</sub> =1.0A	V <sub>F</sub>	1.0	1.3	1.7	V
Max. Reverse recovery time (Note 1)	T <sub>rr</sub>	50		75	nS
Max. Reverse Current	V <sub>R</sub> =V <sub>RRM</sub> , T <sub>J</sub> =25°C	5.0			μA
	V <sub>R</sub> =V <sub>RRM</sub> , T <sub>J</sub> =125°C	150			
TYP. Thermal Resistance (Note 1)	R <sub>θJA</sub>	42			°C/W
TYP. Diode Junction Capacitance (F=1MHz and applied 4V DC reverse voltage)	C <sub>J</sub>	20			pF
Operating Junction Temperature	T <sub>J</sub>	-55 to +150			°C
Storage Temperature	T <sub>STG</sub>	-65 to +175			°C

Note 1: Reverse recovery time test Condition, I<sub>F</sub>=0.5A, I<sub>R</sub>=1.0A, I<sub>RR</sub>=0.25A

Company reserves the right to improve product design, functions and reliability without notice.

REV:C

## Rating and Characteristic Curves (CURM103-G Thru CURM107-G)

Fig.1 - Typical Forward Characteristics

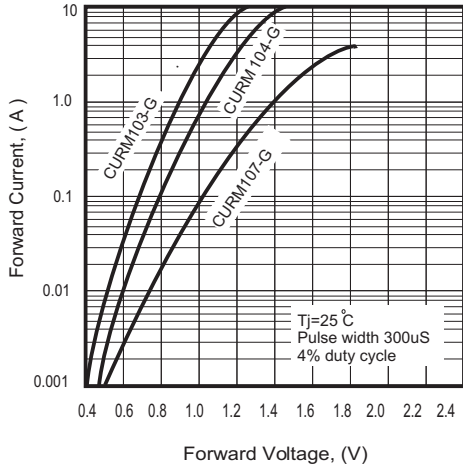


Fig. 2 - Typical Forward Current Derating Curve

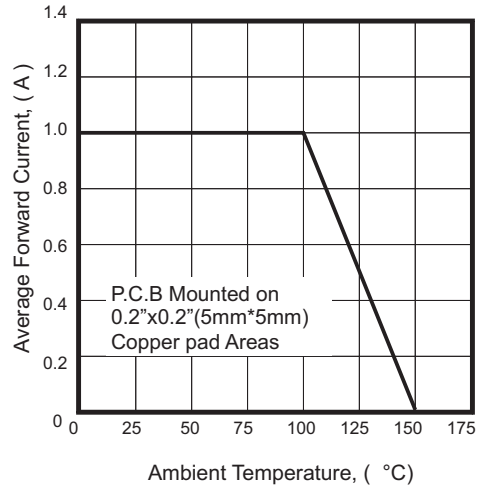
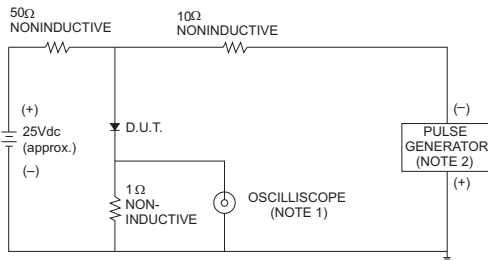


Fig. 3 - Test Circuit Diagram and Reverse Recovery Time Characteristics



NOTES: 1. Rise Time= 7ns max., Input Impedance= 1 megohm.22pF.  
2. Rise Time= 10ns max., Source Impedance= 50 ohms.

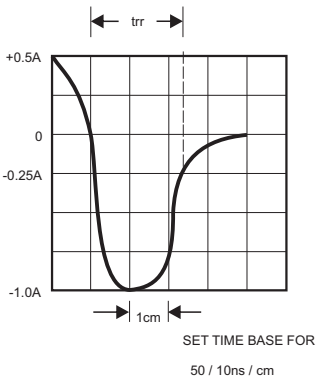


Fig. 4 - Maximum Non-Repetitive Forward Surge Current

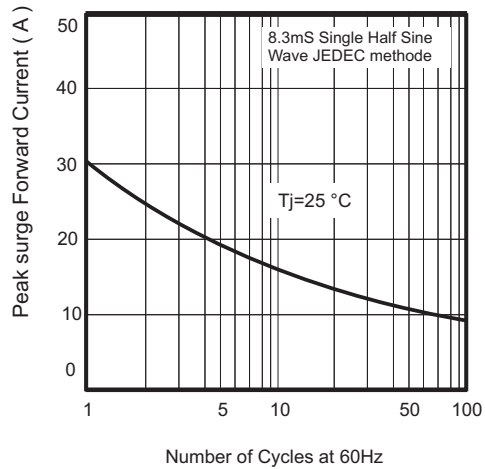
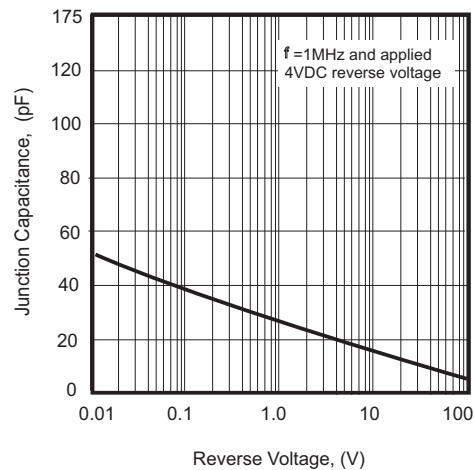
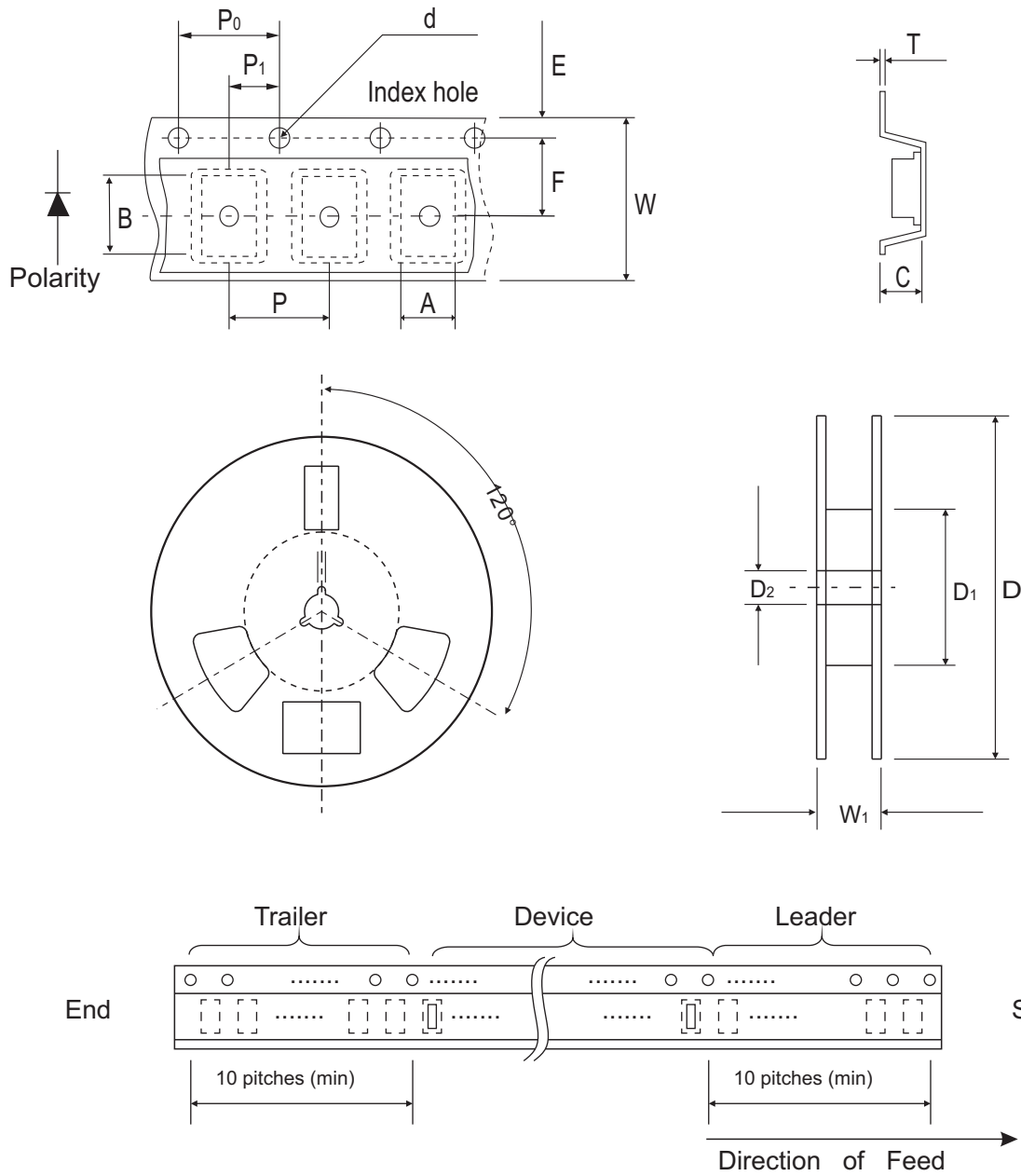


Fig.5 - Typical Junction Capacitance



## Reel Taping Specification



Mini-SMA/ SOD-123	SYMBOL	A	B	C	d	D	D1	D2
	(mm)	1.90 ± 0.10	3.90 ± 0.10	1.68 ± 0.10	1.50 ± 0.10	178 ± 2.00	62.0 MIN.	13.0 ± 0.50
	(inch)	0.075 ± 0.04	0.154 ± 0.04	0.066 ± 0.04	0.059 ± 0.004	7.00 ± 0.079	2.440 MIN.	0.512 ± 0.020

Mini-SMA/ SOD-123	SYMBOL	E	F	P	P0	P1	T	W	W1
	(mm)	1.75 ± 0.10	3.50 ± 0.10	4.00 ± 0.10	4.00 ± 0.10	2.00 ± 0.10	0.23 ± 0.10	8.00 ± 0.30	11.40 ± 1.0
	(inch)	0.069 ± 0.004	0.138 ± 0.004	0.157 ± 0.004	0.157 ± 0.004	0.079 ± 0.004	0.009 ± 0.004	0.315 ± 0.012	0.449 ± 0.039

## Marking Code

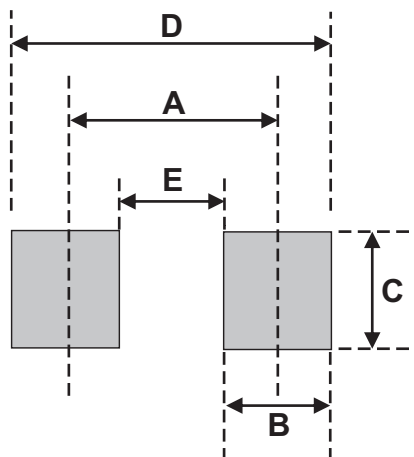
Part Number	Marking Code
CURM103-G	H3
CURM104-G	H4
CURM107-G	H7



XX = Product type marking code

## Suggested PAD Layout

SIZE	Mini-SMA/SOD-123	
	(mm)	(inch)
A	3.30	0.130
B	1.40	0.055
C	1.90	0.075
D	4.70	0.185
E	1.90	0.075



## Standard Packaging

Case Type	Qty per Reel	Reel Size
	(Pcs)	(inch)
Mini-SMA/SOD-123	2,500	7

## X-ON Electronics

Largest Supplier of Electrical and Electronic Components

*Click to view similar products for [Rectifiers](#) category:*

*Click to view products by [Comchip](#) manufacturer:*

Other Similar products are found below :

[70HFR40](#) [RL252-TP](#) [150KR30A](#) [1N5397](#) [NTE5841](#) [NTE6038](#) [SCF5000](#) [1N4002G](#) [1N4005-TR](#) [JANS1N6640US](#) [VS-80-7161](#) [481235F](#)  
[RRE02VS6SGTR](#) [067907F](#) [MS306](#) [70HF40](#) [T85HFL60S02](#) [US2JFL-TP](#) [A1N5404G-G](#) [CRS04\(T5L,TEMQ\)](#) [ACGRA4007-HF](#)  
[ACGRB207-HF](#) [CLH03\(TE16L,Q\)](#) [ACGRC307-HF](#) [ACEFC304-HF](#) [NTE6356](#) [NTE6359](#) [NTE6002](#) [NTE6023](#) [NTE6039](#) [NTE6077](#)  
[85HFR60](#) [40HFR60](#) [1N1186RA](#) [70HF120](#) [85HFR80](#) [D126A45C](#) [SCF7500](#) [D251N08B](#) [SCHJ22.5K](#) [SM100](#) [SCPA2](#) [SCH10000](#) [SDHD5K](#)  
[VS-12FL100S10](#) [ACGRA4001-HF](#) [D1821SH45T PR](#) [D1251S45T](#) [NTE5990](#) [NTE6358](#)