

Glass Passivated Bridge Rectifiers

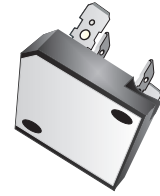


SC35VB80-G Thru. SC35VB160-G


Reverse Voltage: 800V and 1600V

Forward Current: 35A

RoHS Device

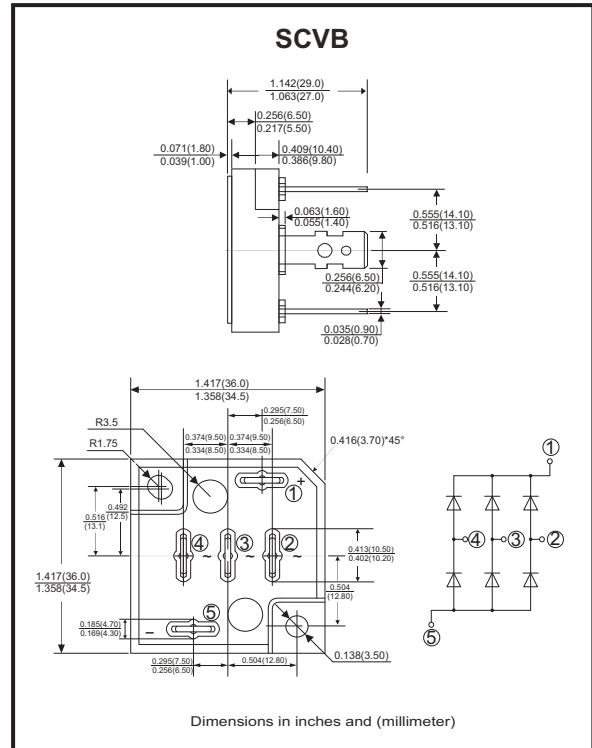


Features

- 3 phase bridge rectifiers.
- Surge overload -350 Amperes peak.
- Low forward voltage drop.
- UL recognized file # E349301 

Mechanical Data

- Polarity: As marked on Body.
- Mounting position: Any.
- Weight: 45 grams.



Maximum ratings and electrical characteristics

Rating at 25°C ambient temperature unless otherwise specified.
Single phase, half wave, 60Hz, resistive or inductive load.
For capacitive load, derate current by 20%

| Parameter | Symbol | SC35VB80-G | SC35VB160-G | Unit |
|--|-----------------|-------------|-------------|--------------|
| Maximum Recurrent Peak Reverse Voltage | V_{RRM} | 800 | 1600 | V |
| Maximum RMS Bridge Input Voltage | V_{RMS} | 560 | 1120 | V |
| Maximum Average Forward Rectified Output Current @ $T_c=55^\circ C$ | $I_{(AV)}$ | 35 | | A |
| Peak Forward Surge Current, 8.3ms Single Half Sine-Wave Super Imposed On Rated Load (JEDEC Method) | I_{FSM} | 350 | | A |
| Current Squared time ($1ms < t < 10ms$) | $I^2 t$ | 508 | | $A^2 s$ |
| Dielectric Strength | V_{dis} | 2000 | | V |
| Mounting Torque | TOR | 0.8 | | N.m |
| Maximum Forward Voltage Drop Per Element At 12.5A Peak | V_F | 1.05 | 1.1 | V |
| Maximum Reverse Current At Rated DC Blocking Voltage Per Element @ $T_A=25^\circ C$ | I_R | 10 | 100 | μA |
| Typical Thermal Resistance (Note 1) | $R_{\theta JC}$ | Max: 0.7 | | $^\circ C/W$ |
| Operating Temperature Range | T_J | -55 to +150 | | $^\circ C$ |
| Storage Temperature Range | T_{STG} | -55 to +150 | | $^\circ C$ |

Notes: 1. Thermal Resistance Junction to case.

Company reserves the right to improve product design, functions and reliability without notice.

REV: E

Rating and Characteristics Curves (SC35VB80-G Thru. SC35VB160-G)

Fig.1 - Derating Curve Output Rectified Current

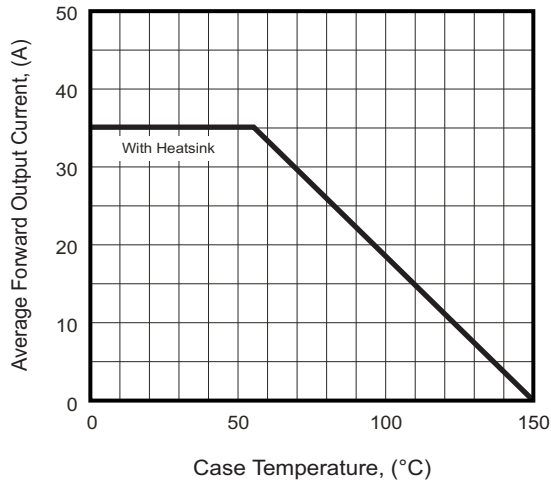


Fig.2 - Typical Forward Characteristics

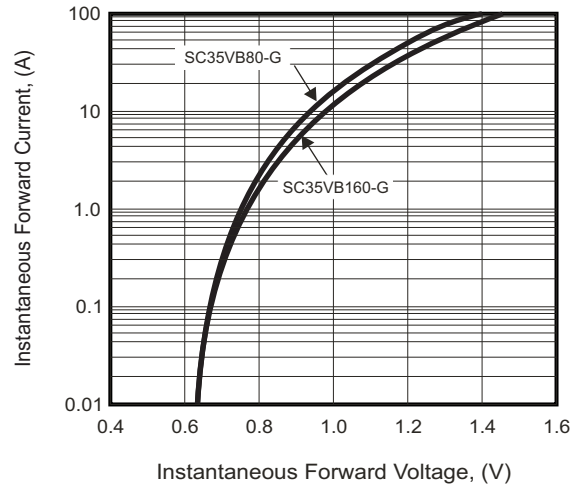


Fig.3 - Maximum Forward Surge Current

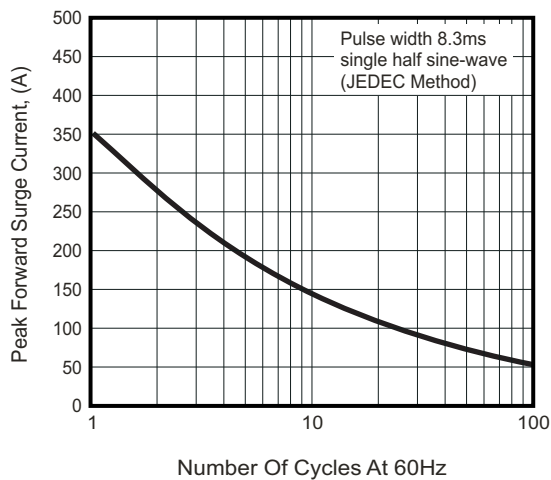
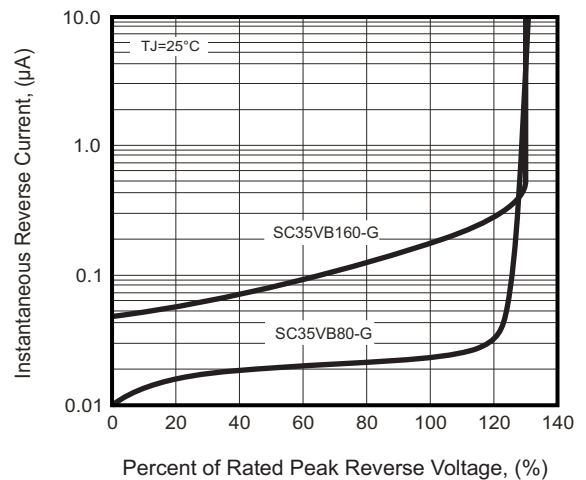
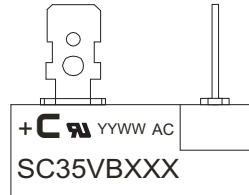


Fig.4 - Typical Reverse Characteristics



Marking Code

| Part Number | Marking code |
|-------------|--------------|
| SC35VB80-G | SC35VB80 |
| SC35VB160-G | SC35VB160 |



C = Compchip Logo

YY WW

↓ ↘ Weeks of the year

↓ A.D. year latter two figures

XXX = Product type marking code

Standard Packaging

| Case Type | BULK PACK | |
|-----------|----------------|-------------------|
| | BOX (pcs) | CARTON (pcs) |
| SCVB | 25 | 100 |

X-ON Electronics

Largest Supplier of Electrical and Electronic Components

Click to view similar products for [Bridge Rectifiers](#) category:

Click to view products by [Comchip](#) manufacturer:

Other Similar products are found below :

[MB2510](#) [MB252](#) [MB356G](#) [MB358G](#) [90MT160KPBF](#) [GBJ1504-BP](#) [GBU15J-BP](#) [GBU15K-BP](#) [GBU4A-BP](#) [GBU4D-BP](#) [GBU6B-E3/45](#)
[GSIB680-E3/45](#) [DB101-BP](#) [DF01](#) [DF10SA-E345](#) [KBPC50-10S](#) [RS405GL-BP](#) [G5SBA60-E3/51](#) [GBU10J-BP](#) [GBU6M](#) [GBU8D-BP](#)
[GBU8J-BP](#) [GSIB1520-E3/45](#) [36MB140A](#) [TB102M](#) [MB1510](#) [MB258](#) [MB6M-G](#) [MB86](#) [TL401G](#) [MDA920A2](#) [TU602](#) [TU810](#) [BR1005-BP](#)
[BR101-BP](#) [BR84DTP204](#) [BU2008-E3/51](#) [36MB100A](#) [KBPC10/15/2501WP](#) [KBPC25-02](#) [VS-2KBB60](#) [DF06SA-E345](#) [DF1510S](#) [VS-](#)
[40MT160PAPBF](#) [W02M](#) [GBL02-E3/45](#) [GBU4G-BP](#) [GBJ2506-BP](#) [GBU6B-E3/51](#) [GSIB15A80-E3/45](#)