

**Part Number: 3570 1411 Series**  
**Instrumentation Grade Mini SIP - 1 Form A**  
**Product Data Sheet**

## PICTURE



## FEATURES

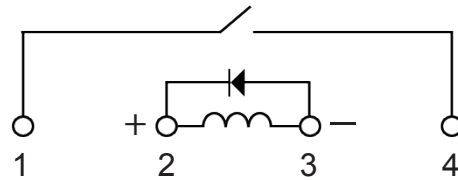
- High Reliability Instrumentation Grade reed switch with sputtered Ruthenium contacts.
- 10 W Mini SIP (40% smaller than 3570-1333 series)
- Magnetic shield-reduces interaction (option).
- Coil suppression diode protects coil drive circuits (option).
- High Insulation Resistance:  $10^{12} \Omega$  MIN
- High board density.
- Molded thermoset industry standard package.
- Hermetically sealed contacts for long life.
- UL File E358613

**✓ RoHS Compliant**

## ORDERING INFORMATION

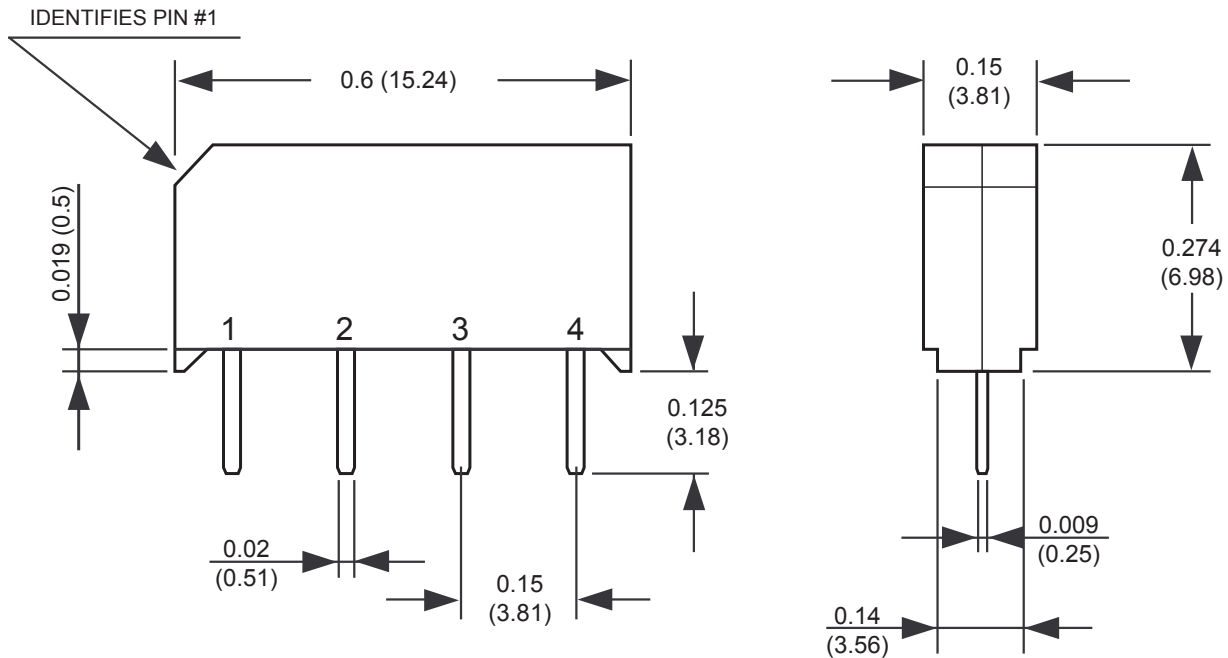
| Series     | Coil | Options                              |
|------------|------|--------------------------------------|
| 3570.1411. | 05   | 1 = no diode                         |
|            | 12   | 2 = internal magnetic shield         |
|            |      | 3 = with diode                       |
|            |      | 4 = internal magnetic shield + diode |

## SCHEMATIC



**Part Number Example:** 3570.1411.xxx  
 3570.1411.051 = 5 volt coil, no diode

## DIMENSIONS



Drawings not to scale.  
 All dimensions in inches (mm) nominal.

As part of the company policy of continued product improvement, specifications may change without notice. Our sales office will be pleased to help you with the latest information on this product range and the details of our full design and manufacturing service. All products are supplied to our standard conditions of sale unless otherwise agreed in writing.

**Phone: (1) 973 777 6900**

**www.comus-intl.com**

**Fax: (1) 973 777 8405**

Belgium: + 32 (0)12 390400 - Comus Europe Ltd (Assemtech) UK: +44 (0) 1255 862236 - Germany: +49 (0)911 923 15 943 - Netherlands: +31(0)45 54 39 345 - India: +(91) (44) 43219090  
 ©2015 Copyright Comus International, 454 Allwood Road, Clifton NJ 07012, USA

**Part Number: 3570 1411 Series**  
**Instrumentation Grade Mini SIP - 1 Form A**  
**Product Data Sheet**

**COIL DATA-STANDARD TYPE 1 FORM A (at 20 °C)**

| NOMINAL VOLTAGE<br>DC±10%[V] | COIL RESISTANCE<br>±10% (Ω) | MAX OPERATE<br>VOLTAGE (VDC) | MIN RELEASE<br>VOLTAGE (VDC) | MAX COIL<br>VOLTAGE (VDC) |
|------------------------------|-----------------------------|------------------------------|------------------------------|---------------------------|
| 5                            | 500                         | 3.75                         | 0.4                          | 7                         |
| 12                           | 1000                        | 9.0                          | 1.0                          | 16                        |

**CONTACT RATING**

|                       |         |
|-----------------------|---------|
| Max Switching Power   | 10 W    |
| Max Switching Voltage | 200 VDC |
| Max Switching Current | 0.5 A   |
| Max Carry Current     | 1.5 A   |

**SPECIFICATION**

|  |  |
|--|--|
| Contact Resistance (Initial)                     | MAX 150 mΩ   |
| Operate Time - including bounce (Typical)        | 0.35 ms (At Nominal Voltage)   |
| Release Time (Typical)                           | 0.1 ms   |
| Insulation Resistance @ 100V, 20°C, 40% RH (MIN) | 10 <sup>12</sup> Ω   |
| Dielectric Strength (MIN)                        | Between Open Contacts 200 V DC / peak AC<br>Between Coil to Contacts 1500 V DC / peak AC |
| Capacitance Between Open Contacts (Typical)      | 0.5 pF   |
| Vibration  | 20G  |
| Shock Resistance                                 | 50G  |
| Operating Temperature                            | -40° +85°C   |
| Storage Temperature                              | -40° +100°C  |
| Life Expectancy of Electrical                    | 1000 x10 <sup>6</sup> ops (1 VDC, 10mA)  |

As part of the company policy of continued product improvement, specifications may change without notice. Our sales office will be pleased to help you with the latest information on this product range and the details of our full design and manufacturing service. All products are supplied to our standard conditions of sale unless otherwise agreed in writing.

**Phone: (1) 973 777 6900**      **www.comus-intl.com**      **Fax: (1) 973 777 8405**

Belgium: + 32 (0)12 390400 - Comus Europe Ltd (Assemtech) UK: +44 (0) 1255 862236 - Germany: +49 (0)911 923 15 943 - Netherlands: +31(0)45 54 39 345 - India: +(91) (44) 43219090

©2015 Copyright Comus International, 454 Allwood Road, Clifton NJ 07012, USA

## X-ON Electronics

Largest Supplier of Electrical and Electronic Components

*Click to view similar products for [Reed Relays](#) category:*

*Click to view products by [Comus](#) manufacturer:*

Other Similar products are found below :

[CUPE001A624](#) [CUPE004A605](#) [8000-0217](#) [922A06C4C](#) [PRMA1A24B](#) [HGS1021](#) [HGS1048](#) [HGZM1C24](#) [HGZM2C05](#) [HGZM2C12](#)  
[HGZM2C48](#) [134MPCX-3](#) [MSS62A05](#) [MSS71A05](#) [MSS71A05B](#) [MSS71A12](#) [MSS71A12B](#) [MSS71A24](#) [HYR2001-1520](#) [9000-0153](#) [2600-0308](#) [2653-12-310](#) [2610-12-310](#) [2611-05-310](#) [PRMA1B05B](#) [2653-05-310](#) [HGP1005](#) [HGS1019](#) [HGS2M5114](#) [HGZM1C05](#) [HGZM1C12](#)  
[HGZM1C48](#) [3-1393771-5](#) [3432-12-91](#) [CUPV50020](#) [HYR2031-1520](#) [V23100V4305C11](#) [W107DIP-43](#) [W193RE1C3-12G](#) [W193RE2A3-12G](#)  
[W193RE2C3-24G](#) [W193RE3A3-24G](#) [W193RE3C3-24G](#) [W193RE4C3-12G](#) [5000-0242](#) [W193RE4C3-24G](#) [W193RE4A3-24G](#) [W193RE4A3-12G](#) [W193RE2C3-12G](#) [W193RE2A3-24G](#)